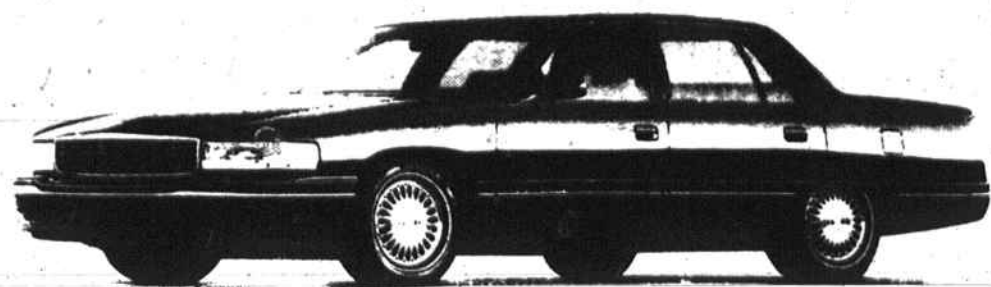


# YOU CAN AFFORD A CADILLAC LAST CHANCE—THESE PRICES END MAY 31st!!!

## 1994 DEVILLE



starting at: \$29,925

or \*choose \*1 payment \***\$10,982**

## 1994 CONCOURS NORTHSTAR ENGINE



starting at: \$33,400

or \*choose \*1 payment \***\$12,114**

## 1994 SEVILLE



starting at: \$37,100

or \*choose \*1 payment \***\$11,961**

## 1994 ELDORADO



starting at: \$33,227

or \*choose \*1 payment \***\$13,452**

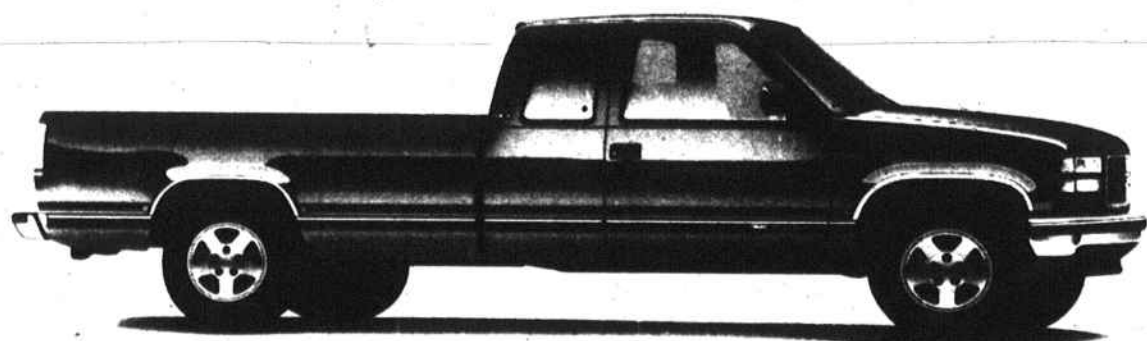
Plus tax & fees. 1 payment based on 24 month lease. Deville-\$23,349, Conours-\$25,397, Eldorado-\$23,755, Seville-\$27,378

# TOO MANY TRADES...WEEKEND CLEARANCE!!!

<b>1993 GMC SIERRA X-CAB</b> Red, only 800 miles. #P453	<b>\$19,977</b>	<b>1991 CADILLAC SEVILLE</b> Fully equip, only 42,000 miles. #P471	<b>\$19,977</b>	<b>1990 CADILLAC FLEETWOOD</b> Fully equip., blue. #P424.	<b>\$12,977</b>	<b>1992 CADILLAC SEVILLE STS</b> Astro roof, only 28,000 miles. #P437.	<b>\$28,977</b>
<b>1987 OLDSMOBILE CUTLASS SUPREME CPE</b> Burgundy, only 58,000 miles.	<b>4,977</b>	<b>1986 NISSAN MAXIMA WG</b> Moonroof, loaded, only 42K miles, auto, burgundy, 1 owner. #C41268.	<b>\$6,977</b>	<b>1993 BUICK CENTURY</b> 4DR, blue, very nice car. #P468	<b>\$11,995</b>	<b>1994 CADILLAC FLEETWOOD BROUGHAM</b> Fully equip. only 9,000 miles. #T455.	<b>\$29,977</b>
<b>1989 SUZUKI SIDEKICK 4X4</b> Auto. air, 51K miles. #P458A	<b>\$6,995</b>	<b>1989 LINCOLN CONTINENTAL</b> Very nice, black. 49K miles. #P469	<b>\$11,995</b>	<b>1989 BMW 750 I.L.</b> for blue, 55K miles, one owner. #C4136A	<b>\$25,995</b>	<b>1992 BUICK PARK AVENUE</b> Loaded, only 27,000 miles. #P467	<b>\$18,977</b>
<b>1989 PONTIAC BONNEVILLE</b> 4DR, gold, full equipped, 52K miles. #P470	<b>\$9,995</b>	<b>1990 CADILLAC SEDAN DEVILLE</b> Fully equip., blue. #P45A.	<b>\$9,877</b>	<b>1991 CADILLAC SEDAN DEVILLE</b> Fully equip., dk. blue. #P431.	<b>\$15,977</b>	<b>1984 CHEVY 4X4 PLU</b> Silverado, only 46K miles. #T4095A.	<b>\$7,977</b>
<b>1991 TOYOTA CAMRY</b> PW, PL, cruise. #T414TA	<b>\$10,977</b>	<b>1990 BUICK LESABRE</b> Fully equip. #T4192B.	<b>\$9,977</b>	<b>1992 CADILLAC ELDORADO</b> One owner, only 7,000 miles. #C4074B.	<b>\$26,977</b>	<b>1993 CADILLAC SEDAN DEVILLE</b> Program cars starting at...	<b>\$21,995</b>

## SLE SIERRA EXTENDED CAB PICK-UP

T-4218 MSRP = \$22,742.00



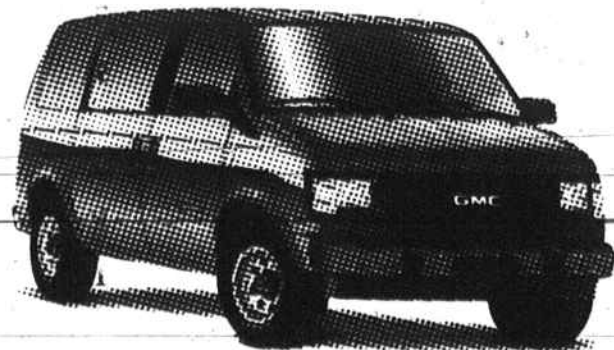
- POWER WINDOWS-LOCKS
- TILT/CRUISE
- V-8 ENGINE
- TRAILERING
- BUCKET SEATS
- LOADED

Your Price  
**\*\$19,699\***  
Your Payment  
**\$307.60**

**BEDLINER  
WITH  
EVERY  
TRUCK**

## GGO SAFARI VANS MSRP = \$20,431

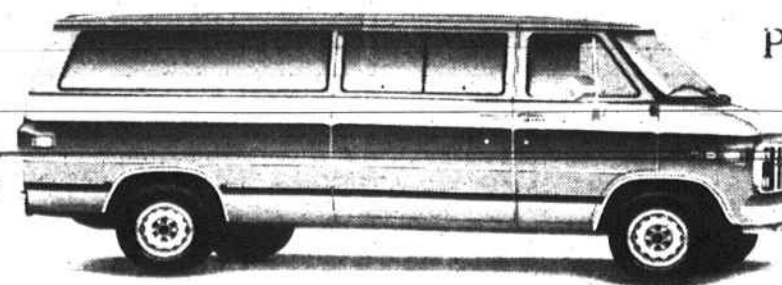
- CLOTH INTERIOR
- STEREO/RADIO
- AIR BAG
- FT. & REAR AIR COND.
- POWER WINDOWS/LOCKS
- MUCH MORE



SEVERAL TO  
CHOOSE FROM  
Your Price  
**\*\$17,480\***  
Your Payment  
**\$268.39**

- AIR BAG
- STEREO
- POWER LOCKS
- FT. & REAR AIR COND.
- AUXILIARY LIGHTING
- V-8 ENGINE
- MUCH MORE

## 15 PASSENGER RALLY VAN MSRP = \$24,441.25



P-465  
Perfect for church  
Your Price  
**\$20,800**  
Your Payment  
**\$367.49**

- Tiara Conversion Vans starting at \$21,445\* (#T4141)
- Safari Passenger Vans starting at \$16,995\* (#T4121)
- Safari Cargo Vans starting at \$14,875\* (#T4124)
- Vandura Cargo Vans starting at \$15,900\* (#T4187)

\*PRICE IS BASED ON ALL REBATE, RETAINED BY DEALER. PAYMENT IS BASED ON 20% DOWN IN CASH OR TRADE PLUS TAX TAGS & FEES, 7.5% APR FOR 60 MOS.



Cadillac...Changing the way you think about American automobiles. Classic Cadillac...Changing the way they're sold and serviced.

**CLASSIC**  
CADILLAC • GMC TRUCK  
CREATING A HIGHER STANDARD



**7726 North Point Blvd., Winston Salem • (910)759-2239**

SALES HOURS: MON-FRI 8:30AM-7PM, SATURDAY 9AM-4PM • SERVICE HOURS: MON-FRI 7:30AM-5:00PM