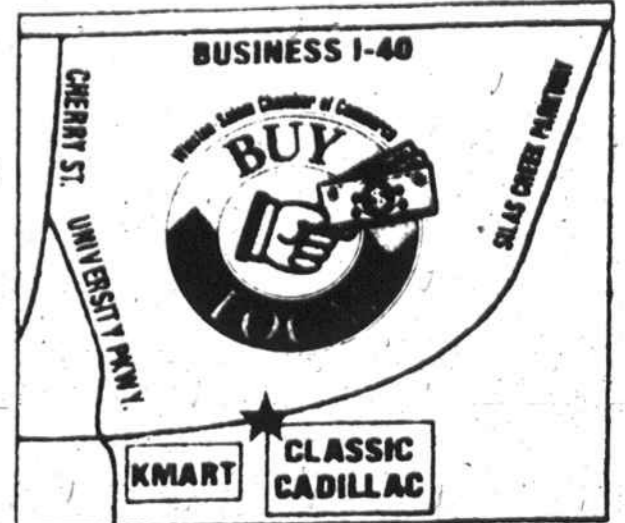




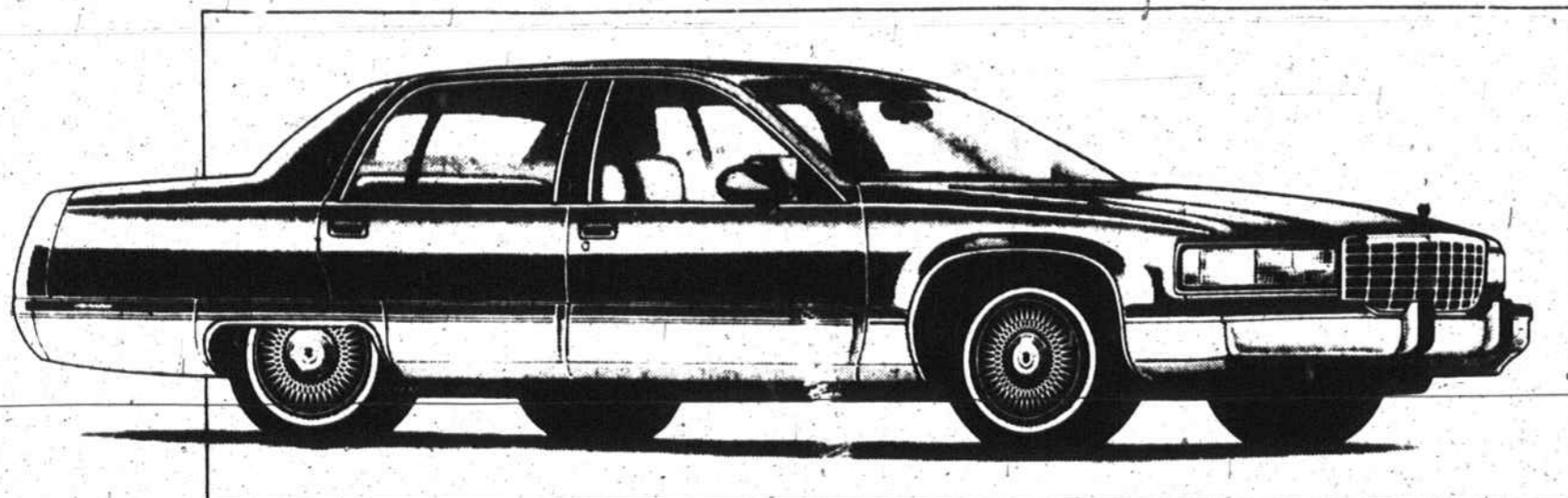
CLASSIC

CADILLAC • GMC TRUCK



Cadillac ... Creating a Higher Standard

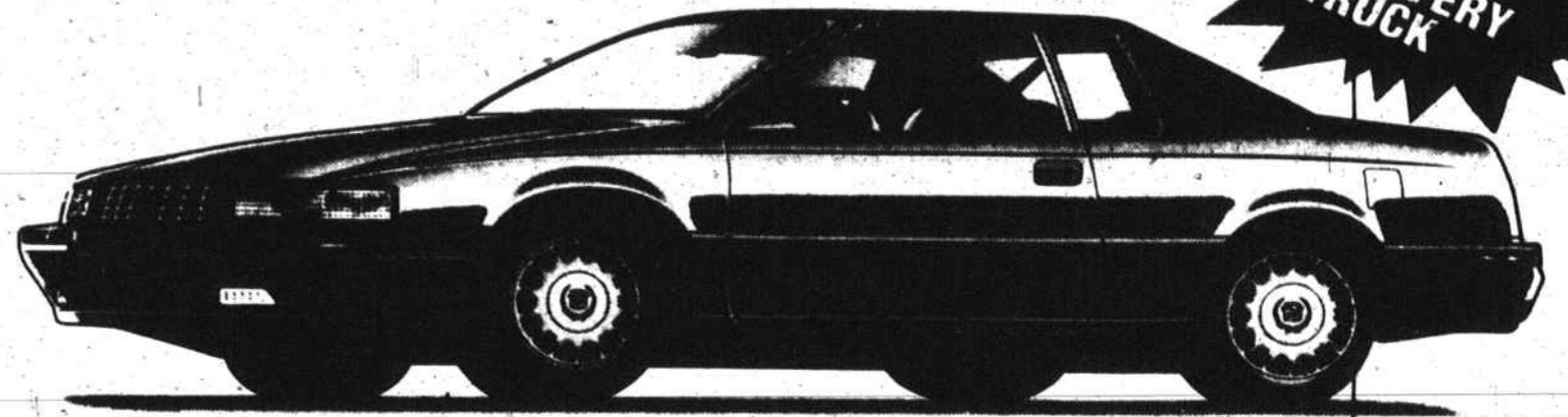
1995 Cadillac Introduction Sales Event!



Some fear the passage of time . . .

Others welcome it because it will reveal their strengths.

J.D. Powers and Associates reveals the best overall carline in vehicle dependability at five years of ownership no longer comes from Germany or Japan.



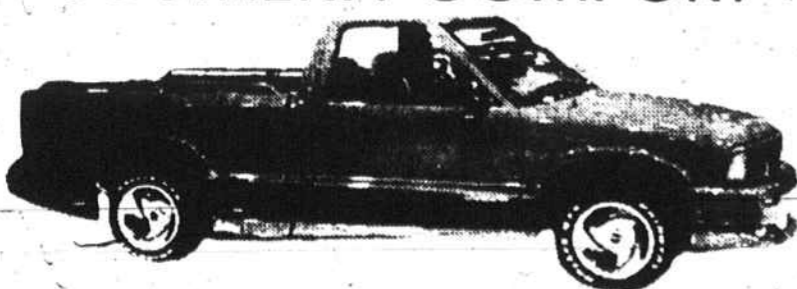
FREE BEDLINER WITH EVERY TRUCK

THE 95'S ARE HERE...COME TO CLASSIC GMC & SEE WHY GMC HAS NO EQUAL!

CLASSIC'S PRE-OWNED CADILLACS AND OTHER FINE CARS AND TRUCKS!

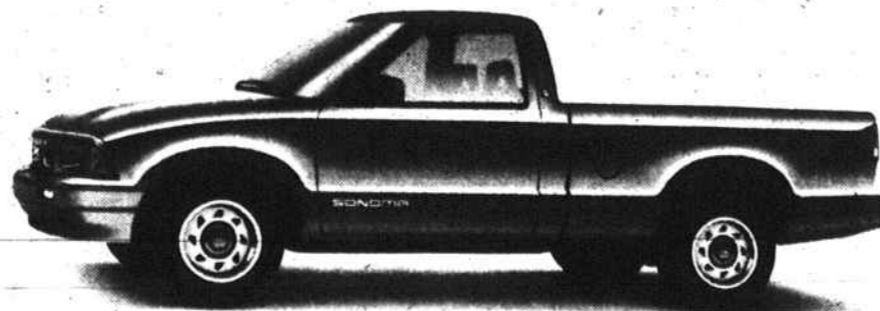
1992 BUICK CENTURY CUSTOM V6, p. windows, p. locks, only 30,000 miles. #C4042C	\$10,977	1993 CADILLAC ALLANTE Both tops, very nice, only 81,000 miles. #P511A	\$15,977	1994 NISSAN MAXIMA GXE Leather, loaded, only 5000 miles #T5057A	\$18,977
1993 GMC SONOMA P/U Auto, A/C, only 12,000 miles. #T4244A	\$11,977	1993 MAZDA MX-6 V-6 Leather, sunroof, must see. #15046A	\$16,977	1994 MERCURY GR. MARQ. LS Leather, fully equipped, only 10,000 miles #C4052A	\$19,977
1990 CHEVY 2500 P/U Auto, A/C, Cheyenne, #T5036A	\$11,977	1994 GMC SAFARI 8 PASSENGER Fully equip., nice. #P536	\$16,977	1991 VOLVO 940 TURBO WGN. PWR, sunroof, loaded, leather, #P524B	\$19,977
1992 BUICK REGAL GRAND SPT. Astro roof, leather, must see. #T4141A	\$12,977	1992 OLDS CUTLASS SUP. CONV. Leather, CD, all power equip. #P515	\$16,977	1991 CADILLAC FLEETWOOD Leather, loaded, only 45,000 miles #P537	\$19,977
1993 BUICK LESABRE SEDAN PW, PL., 26K miles. #P510	\$14,977	1994 NISSAN MAXIMA GXE Leather, loaded, only 5000 mi. #T5057A	\$18,977	1992 CADILLAC ELDORADO #P514 Astorroof, loaded	\$20,977
1994 MITSUBISHI GALANT LS Sunroof, loaded. #P451A	\$15,977	1992 CADILLAC DEVILLE Loaded, leather, only 32,000 miles #P526A	\$18,977	1992 CADILLAC SEVILLE SLS Fully equipped, leather. #P512A	\$23,977

THE CLASSIC CONVERSION "SOUTHERN COMFORT"



- AIR BAG
- GROUND EFFECTS
- RAILS
- SPECIAL ALUMINUM WHEELS
- LO-PRO WL TIRES
- MUCH, MUCH MORE

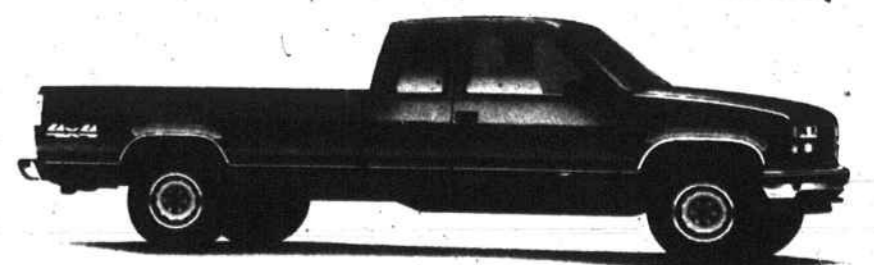
'95 SONOMA SL



- AIR CONDITIONING
- AM-FM CASSETTE
- INTERMITTENT WIPERS
- OVERDRIVE TRANSMISSION
- ANTI-LOCK BRAKES
- MUCH, MUCH MORE

YOUR PRICE **\$10,650**
\$191⁷⁸
per month

THE '95 4X4 SIERRA EXTENDED CABS ARE HERE!



- AIR BAG
- SLE
- Z71 EQUIPMENT
- BUCKET SEATS
- KEYLESS ENTRY
- CASSETTE
- WINDOW LOCKS
- ANTI-LOCK BRAKES
- 350 V-8 ENGINE
- POWER SEAT
- ALUMINUM WHEELS
- TRAILERING
- MUCH, MUCH MORE!!

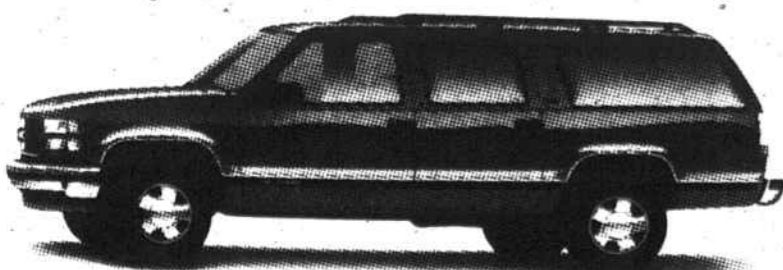
"COME TEST DRIVE IT AND SEE WHY IT'S THE VERY BEST"

MSRP - \$25,844

'95 4X4 "SLT" SUBURBAN (ONLY ONE)

MSRP=34,330

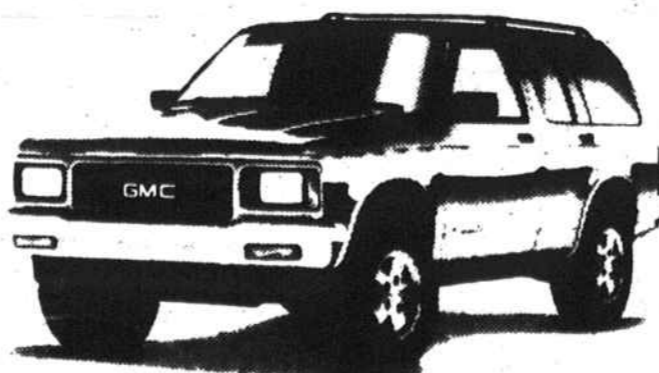
T-504B



- 350 V-8 ENGINE
- KEYLESS ENTRY
- FT & REAR AIR & HEAT
- LOCKING DIFFERENTIAL
- ANTI-LOCK BRAKES
- LEATHER INTERIOR
- HEAVY DUTY TRAILERING
- POWER SEAT
- POWER WINDOWS-LOCKS
- TILT-CRUISE
- AIR BAG
- MUCH, MUCH MORE!!!

THE '94'S GOTTA GO!—PRICES YOU WON'T BELIEVE!

'94 JIMMY SLE's



- TILT/CRUISE
- POWER WINDOWS AND LOCKS
- ALUM. WHEELS
- ANTI-LOCK BRAKES
- ADJUSTABLE RIDE
- MUCH, MUCH MORE

DISCOUNTS OVER
\$4,000

WORLD'S BEST . . . TIARA CONVERSION VANS



- RAISED ROOF
- TV-VCP
- 2 CASSETTES
- TILT/CRUISE
- POWER WINDOWS/LOCKS
- CAPTAIN CHAIRS
- LOADED

DISCOUNTS OVER
\$7,000

7726 NORTH POINT BLVD., WINSTON-SALEM, NC (910) 759-2239