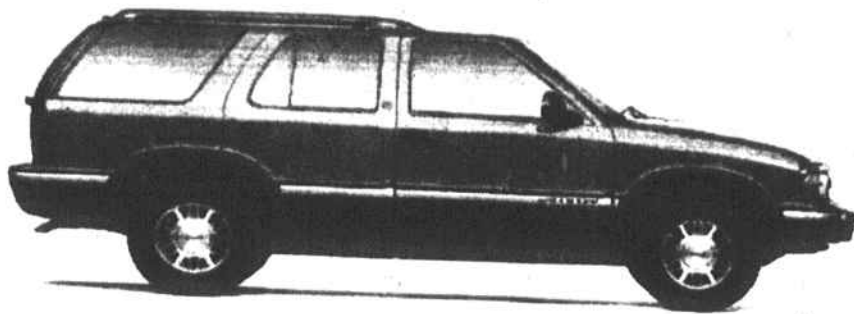


GMC TRUCKS • CADILLAC SAVINGS

1996 Jimmy 4x4 SLE

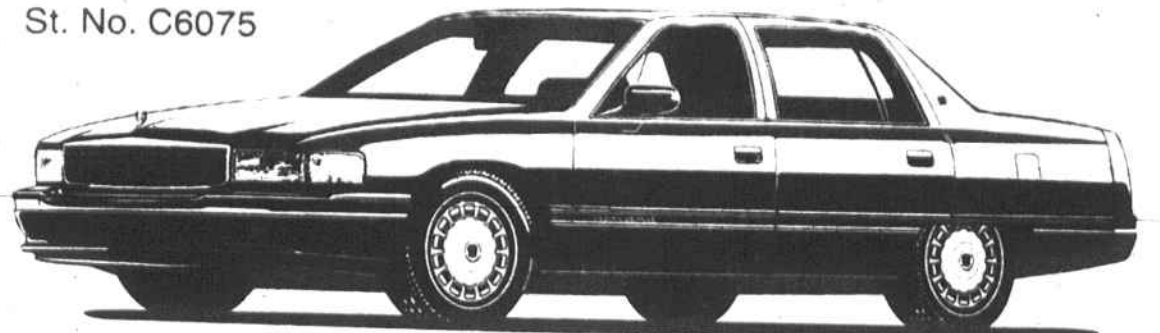
St. No. 6066



\$269

PER MONTH

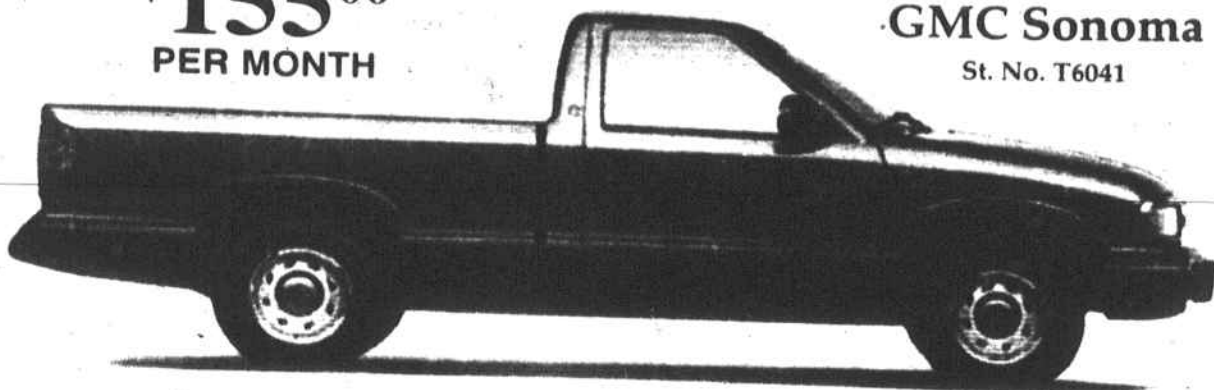
St. No. C6075



New Cadillac Sedan DeVille
ONLY.....\$395⁰⁰
PER MONTH

\$155⁰⁰
PER MONTH

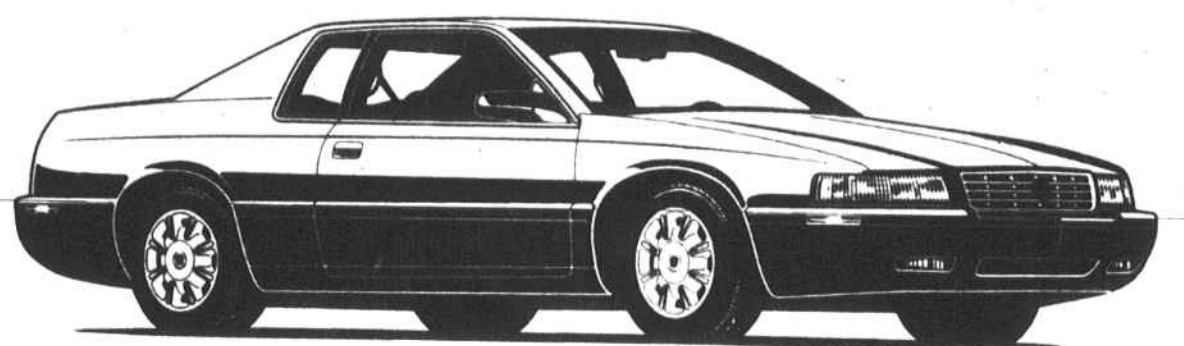
1996
GMC Sonoma
St. No. T6041



Air cond., AM/FM stereo cassette, white letter tires, custom cloth interior.

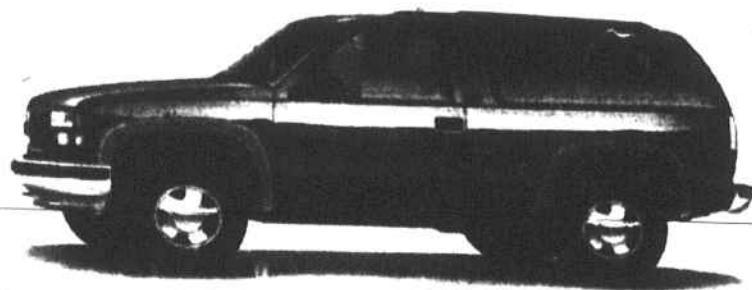
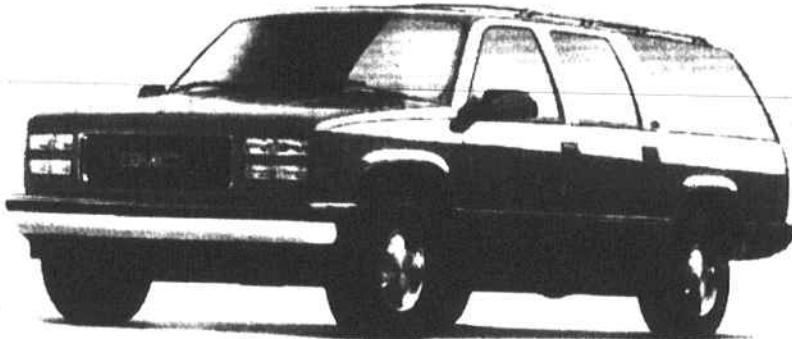
6.9% APR OR **\$600** REBATE

St. No. C6050



Brand New Cadillac
Eldorado SAVE UP
TO
\$5000

1996
SUBURBANS
1996
2DR & 4DR
YUKONS



**NOW IN
STOCK!**



New 1996 Fleetwood
Cadillacs
SAVE UP TO
\$5000

New
Cadillac
Deville
SAVE UP TO **\$6000**



St. No. 5032

QUALITY PRE-OWNED CARS & TRUCKS

1994 PONTIAC GRAND AM

#C6049B, V-6, 4 Dr, auto, PDL, PS, PB, AM/FM cass, A/C, cruise, tilt, 1 owner.

\$9995

1991 FORD AEROSTAR EDDIE BAUER

#16054A, V-6, Auto, PW, PDL, PS, PV, AM/FM cass, Dual A/C, cruise, tilt, alum wheels, 1 owner, Exc cond, Gold/Tan, Warranty

\$9995

1995 CHEVY BERETTA Z-16

#T6023B, V-6, 2 door, auto, PW, PDL, PS, PV, AM/FM cass, A/C, cruise, tilt, alloys, good miles, Like New, Black, Spoiler

\$12,995

1995 FORD TAURUS

#55208A, V-6, auto, PW, PDL, PS, PB, AM/FM cass, A/C, cruise, tilt, 1 owner, Exc Cond, Champagne

\$13,995

1992 LINCOLN CONTINENTAL EXECUTIVE 4DR

#C6061A, V-6, 4 dr, auto, PW, PDL, PS, PV, AM/FM cass, A/C, cruise, tilt, alum whls, 1 owner, 28K miles, Like new, Blue/Blue Leather int, Warranty

\$14,995

1993 CHEVROLET 2500 LONG BED TURBO DIESEL

#P610B, V-8, 2 dr, 5 spd, PS, PV, AM/FM cass, A/C, 21K miles, Gray, Bedliner.

\$14,995

1993 NISSAN MAXIMA SE

#C6042B, V-6, 4 door, PW, PDL, PS, PV, AM/FM cass, power sunroof, A/C, cruise, tilt, alloys, 35K miles, Exc Cond, Blue/Blue, Leather interior

\$15,995

1994 DODGE RAM 2500 LONG BED

#T6018A, V-8, 2 door, auto, PS, PB, AM/FM cass, low miles, exc cond, Green, Warranty Bedliner.

\$16,995

1993 CADILLAC SEDAN DEVILLE

#P678A, V-8, 4 door, auto, PW, PDL, PS, PV, AM/FM cass, A/C, cruise, tilt, alum wheels, exc cond, Silver/Gray leather interior, Warranty.

\$16,995

1995 GMC SAFARI ALL WHEEL DRIVE

#P675, V-6, auto, PW, PDL, AM/FM cass, A/C, cruise, tilt, alum wheels, exc cond, White, Warranty.

\$16,995

1994 GMC SIERRA SLE

#P656, V-8, auto, PW, PDL, PS, PV, AM/FM cass, A/C, cruise, tilt, alum wheels, 27K miles, Like new, Gold, Warranty.

\$16,995

1992 CADILLAC DEVILLE

#P603A, V-8, 4 door, auto, PW, PDL, PS, PB, AM/FM cass, A/C, cruise, tilt, alloys, 29K miles, exc cond, Blue/Blue leather interior.

\$17,995

1993 LINCOLN TOWN CAR EXECUTIVE

#C5144A, V-8, 4 door, auto, PW, PDL, PS, PB, AM/FM cass, A/C, cruise, tilt, alloys, 38K miles, exc cond, Red/Red leather.

\$17,995

1995 GMC SIERRA SPORT SIDE

#P693, V-8, 2 door, 5 spd, PS, PB, AM/FM cass, A/C, cruise, tilt, alloys, 23K miles, exc cond, Black, warranty.

\$17,995

1992 VW GOLF GTI

Red, sunroof, sports wheels.

\$19,995

1995 GMC SIERRA 2500

#P616, V-8, 2 door, auto, PW, PDL, AM/FM cass, A/C, cruise, tilt, alum wheels, 5K miles, like new, green, warranty.

\$19,995

1994 CADILLAC SEDAN DEVILLE

#P709, V-8, 4 door, auto, PW, PDL, PS, PV, AM/FM cass, A/C, cruise, tilt, alum wheels, 1 owner, low miles, like new, green/tan, warranty.

\$24,995

1994 CADILLAC ELDORADO

#P708, V-8, 2 door, auto, PW, PDL, PS,

\$26,995

1994 CADILLAC CONCOURS

#P664, V-8, 4 dr, auto, PW, PDL, PS, PV, AM/FM cass, CD player, pw sunroof, A/C, cruise, tilt, 22K mls, like new, Black/Gray leather, memory seats, lmted ch whls.

\$26,995

1995 CADILLAC FLEETWOOD BROUGHAM

#P649, V-8, 4 door, auto, PW, PDL, PS, PB, AM/FM cass, CD player, A/C, cruise, tilt, T-top, alloys, 8K miles, like new, White/Neutral shade.

\$29,995

1994 CADILLAC SEVILLE SLS

#P707, V-8, 4 door, auto, PW, PDL, PS, PB, AM/FM cass, A/C, cruise, tilt, alum wheels.

\$29,995

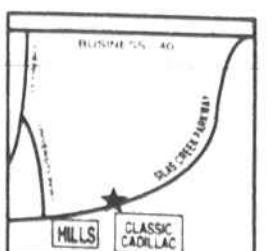
1994 ELDORADO TOURING COUPE

#P711, V-8, 2 door, auto, PW, PDL, PS, PB, AM/FM cass, CD player, power sunroof, A/C, cruise, tilt, alum, 1 owner, exc cond, black/tan int, warranty, heated seats and more!

\$29,995

ASK ABOUT OUR
CONSIGNMENT CARS...

*196 Cadillac Sedan DeVille - Closed end 24 mo. lease, \$37,950 MSRP, lease end value \$24,667, 12,000 mile per year. Cap cost reduction \$4,275.00. 1st payment, security deposit, taxes, tag, title & doc. fee due at delivery. *1996 Jimmy 4x4 SLE. Based on 30 mos. Lease, Cap Cost Reduction is \$3000 plus 1st Payment. Refundable Security Deposit, plus Tax, Tags & Fees. ANY INCENTIVES TO DEALER PRICES DO NOT INCLUDE TAX, TAGS. Payments based on 24 mo. lease. *GMC Sonoma Payments based on 24 mo. lease. \$2500 cap cost reduction plus 1st mo. payment security deposit due at inception plus taxes tag and fees. All financing subject to credit approval. *GMC SierranLong Bed 60 Month financing at 8.75 annual percentage rate. \$2500 cash or trade equity down plus taxes, tags and fees. All financing subject to credit approval. All Used Cars - Payment based on \$3000 cash down or trade equity, plus taxes, tags & doc. fee. All financing subject to credit approval. Terms 92-60 mo. 93 & 94-72 month, 95 & 96-84 mo. - APR 13.25%



Where you get more car for your money and more money for your car!

7726 NORTH POINT BOULEVARD, WINSTON-SALEM, NC • (910) 759-2239 • MON.-FRI. 8:30-7; SAT. 9-4