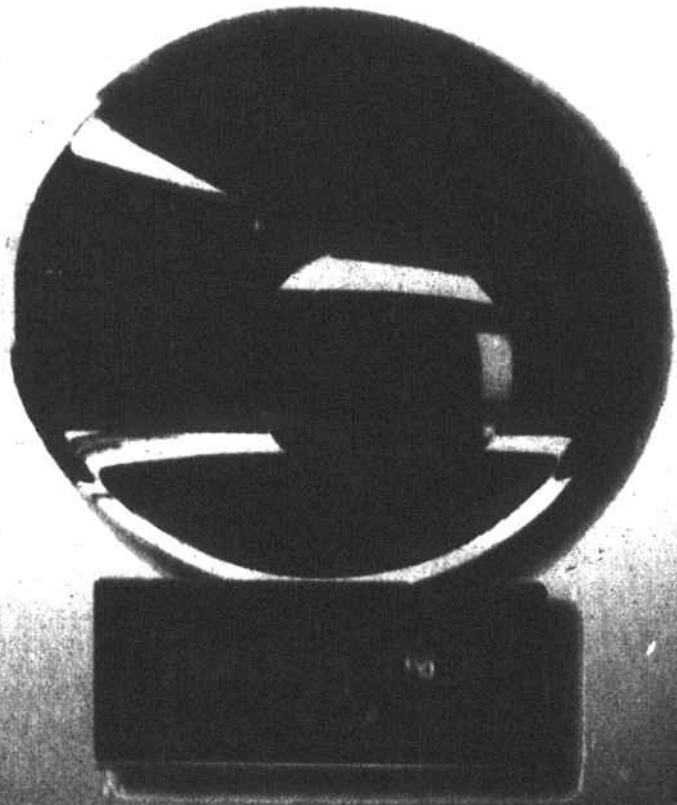


# Bravo!

## Honda Accord

### 1996 Family Sedan of the Year



Family Circle's Family Car of the Year is the only award chosen by women across America who actually drive the vehicles voted on. These women tell Family Circle what qualities matter most in a family car, and then share with their readers which models finished first in each class.

*Whether You are Leasing or Buying*

Selection • Value

Service Department

## 1997 HONDA ACCORD LX

- Automatic Transmission • Air Conditioning
- Power Windows • Power Door Locks • Cruise Control • AM/FM Stereo Cassette • Int. Wipers
- Dual Air Bags • Floor Mats • Mudguards

**\$0**  
CAP COST  
REDUCTION

**\$0** Down  
**\$287**

PER  
MONTH

ONLY  
**\$740<sup>86</sup>**  
DUE AT DELIVERY  
(1st payment, security deposit, tax, license and fees.)



24 month closed end lease with option to purchase at lease end for \$14,151.05. 12,000 miles per year allowance. Total of payments \$6888. 1st payment, security deposit, taxes, license and fees due at delivery. On approved credit. #3057.

## 1996 HONDA CIVIC DX



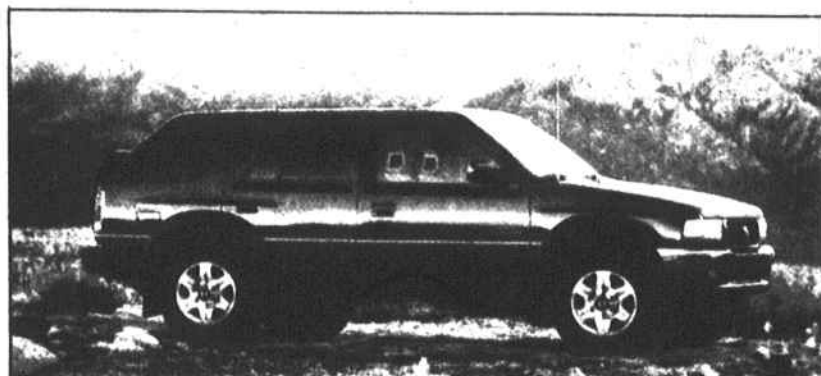
- Auto Transmission • Air Conditioning • AM/FM Cassette • Floor Mats • Mud Guards • Dual Air Bags • Cloth Interior • Tilt Wheel
- Rear Window Defrost

NOW ONLY

**\$13,593**

Taxes, license and fees not included #2574

## 1996 HONDA PASSPORT LX



- Air Conditioning • 190 Hp V-6 Engine
- Power Windows • Power Door Locks
- Cruise Control • Am/fm Stereo Cassette
- Dual Air Bags • Floor Mats • Mudguards

ONLY 3 '96 PASSPORTS LEFT!

**\$246**  
PER MONTH

24 month closed end lease with option to purchase at lease end for \$16,343. 12,000 miles per year allowance. Total of payments \$5904. 1st payment, security deposit, taxes, license and fees due at delivery. On approved credit. #2305. 1800 cap cost reduction.

## 1996 HONDA ODYSSEY LX



- Dual Air Bags • Anti-Lock Braking System (ABS)
- Power Windows • Power Locks • 6 Passenger Seating • AM/FM Stereo Cassette • Automatic Transmission • Dual A/C

ONLY 6 ODYSSEYS LEFT!

**\$289**  
PER MONTH

30 month closed end lease with option to purchase at end for \$16,080. 12,000 miles per year allowance. Total of payments \$8670.00. 1st payment, security deposit, \$1850 cash or trade equity, taxes, license and fees due at delivery. On approved credit. #2585.

**FLOW MOTORS' 785-3380**  
**FORSYTH HONDA**

2600 PETERS CREEK PARKWAY • MONDAY-FRIDAY 9:00AM-9:00 PM; SATURDAY 9:00 AM-6:00 PM

For excellence in quality, performance, style and service, Flow Motors' Forsyth Honda is the only name you need to know. Flow Automotive Companies, serving Winston-Salem and the Triad for more than 40 years.

