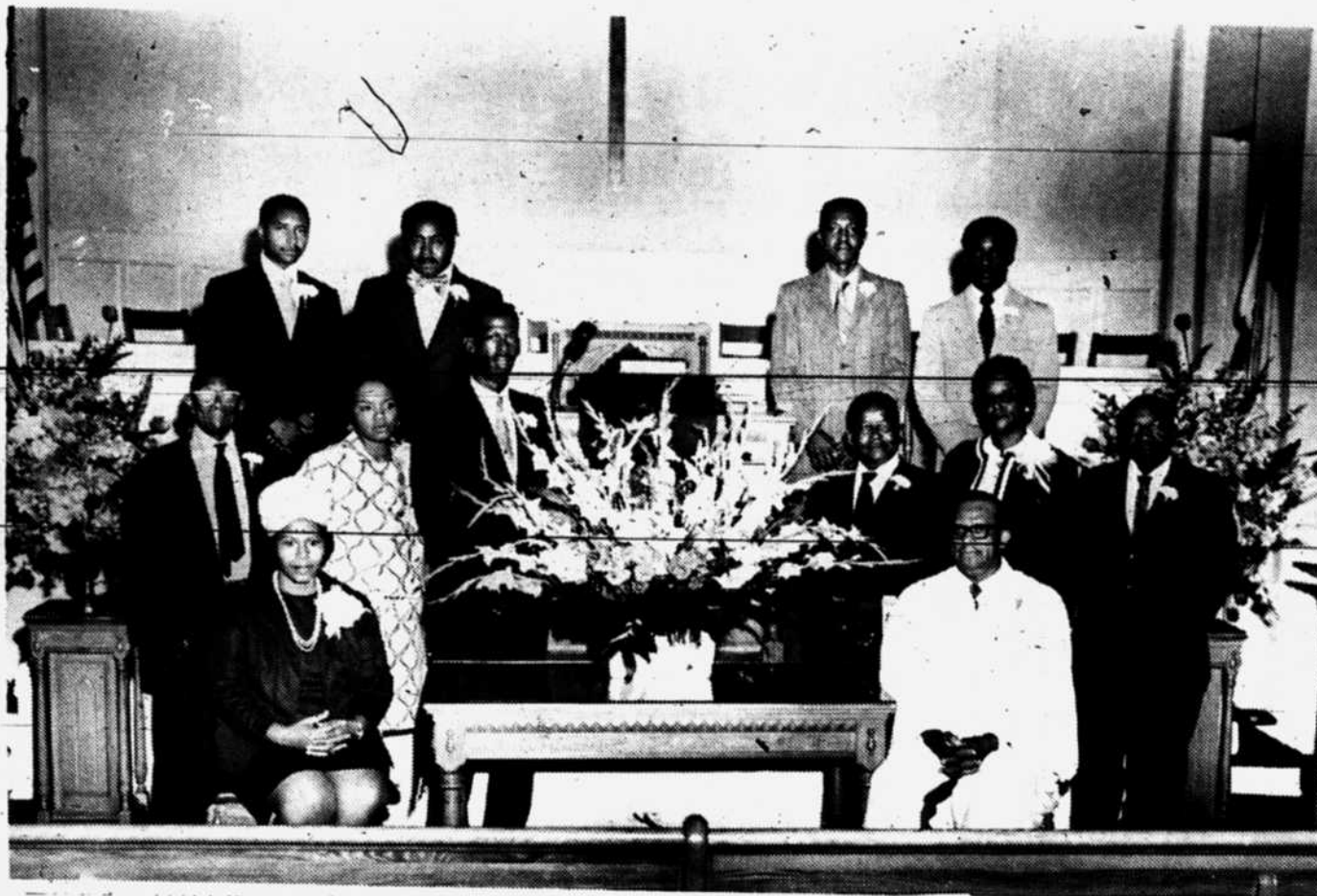




REV. AND MRS. WARREN MCKISSICK
...And Their Appreciation Day Cake



OFFICERS OF Greater Galilee Baptist Church. They are seated left to right, Mrs. Warren McKissick and Rev. Warren McKissick. Second row left to right, Robert Lindsay, former member of the trustee board; Ms. Millicent Mobley, assistant

clerk; Bennie Thompson, George Caster, Mrs. Annie Thompson and Rev. D. White. Back row left to right Jevester Sanders, John A. Curbeam, Hurry Sanders and Phillip Moore.

'Appreciation Day'

Observance Thrills

Rev., Mrs. McKissick

The fifth annual Appreciation Day observance at the Greater Galilee Baptist Church proved a greater success than anticipated.

SEWING CLASS

Girls at the Elon Children's Home in Alamance County are learning to sew, thanks to the interest of members of the Extension Homemakers Clothing Committee.

Their first project was a poncho-type cover-up to be worn over a swim suit, reports Lois Latta, assistant extension home economics agent.

More than 450 persons turned out last Sunday to honor Rev. Warren McKissick, pastor of the 400-member church at 501 W. Park Ave.

The observance had Rev. D. White as the guest minister for the morning service and Rev. W.O. Thompson of Lancaster, S.C. as the guest speaker for the 3 p.m. service.

Among the highlights of the celebration was the presentation of love offering valued at \$664 to Rev. and Mrs. McKissick by deacon James Davis. The McKissicks were also thrilled by a large decorated cake which was the center of attention at the dinner following the morning service, and they appeared more than pleased with the surprised redecoration of the pastor's study.

WATCH THAT CHILD

3 ROOMS FURNITURE

\$299⁹⁵

Easy Credit Terms
Immed. Delivery

Consists Of:

- 5 pc. Dinette
- 4 pc. Bedroom Suite And Living Room Group

Regular Price \$399.95

BROADWAY'S FURNITURE

1801 ROZZELLS FERRY RD. - AT FIVE POINTS

We Invite You To Use Our Budget Plan

We're now open 'til 9 o'clock Friday nights for your convenience.

Fresh from the coast.



Because you live on the coast.

Clam, Spanish Mackerel. Sail and sword if you really want a challenge.

At Briarcliffe West, you can sport on the last unspoiled shore left on the East Coast.

And what can you walk home to? Meticulously-appointed low-rise Garden Condominiums. Nestled in ancient sea-forests. In the golfing capital of the world. Where the average temperatures are mild the year 'round.

An unbelievable clubhouse for you, your neighbors and guests. Swimming pool. Tennis. Complete maintenance and security.

In an area you couldn't pay the natives to leave.

Move into Briarcliffe West and you won't leave, either.

Off Highway 17 at Briarcliffe Acres. P.O. Box 2450, North Myrtle Beach, S.C. 29582. Telephone (803) 272-6126.

Briarcliffe West

by The Ervin Company



We are pledged to the letter and spirit of U.S. policy for the achievement of equal housing opportunities throughout the Nation. We encourage and support an affirmative advertising and marketing program in which there are no barriers to obtaining housing because of race, color, religion, or national origin.



Ed Griffin Co. offers beautiful homes at reasonable prices.

OPEN HOUSE TODAY

AND EVERYDAY
2 p.m. 'til 6 p.m.

OR ANY TIME BY APPOINTMENT

You may trade your present home — a trade-in appraisal is free.

100% VA-MAXIMUM FHA-CONVENTIONAL

HOPE VALLEY

\$23,150 to \$28,500

Right off 6500 block The Plaza on Barrington Dr., see signs.

CEDARS EAST

\$31,000 to \$35,600

Suburban. Left off East Indep. Blvd. into Idlewild Rd., see our sign at 6700 block.

EAST FOREST

\$35,000 to \$42,000

Right off 6500 block Old Monroe Rd. on Knickerbocker.

EASTHAVEN

\$32,850 to \$40,950

Suburban. Off 4700 block Idlewild Rd. North near Lawyers Rd.

PARKVIEW EAST

\$29,900 to \$37,500

Suburban. Left off 7200 block Old Monroe Rd. near East Mecklenburg Hi on McLaughlin Dr.

YORKWOOD

\$25,000 to \$35,000

Intersection of York and Arrowood Road.

These Homes ARE

BALANCED POWER

BALANCED POWER

PIEDMONT NATURAL GAS CO.

HOMES featuring:
NATURAL GAS
HEATING AND WATER
HEATING

Ed Griffin Co.

6157 E. INDEP.

537-4254

ANYTIME

REALTORS



MLB