



**BILL GILLIARD**  
...plans advancements

## Firestone Store Manager Makes You Feel At Home

By Anthony Hayes  
Post Staff Writer

At first glimpse, his boyish smile of youth, coupled with a warm greeting that makes you feel at home, hardly depicts the normal characteristics found in managers. However, the calmness and confidence in which he carries himself, leaves no doubt that Bill Gilliard is (and has been for the past four years) the manager of Firestone. Gilliard, who says, "If you're willing to work hard for something - you'll get it," is the only black Firestone manager in the state of North Carolina.

Gilliard, who once was a division manager at the Woolworth Co., said: "We offer a training program here at Firestone. Those people who are interested must be mobile and willing to relocate. Our management training program begins with classes that are offered in Akron, Ohio." He further explained that, "we look for individuals who are willing to dedicate time and hard work. People, too often, look for things to be handed to them on a silver platter. They're not willing

to work for what they want. Some people want immediate results and expect to enter a job at the very top level."

Gilliard, according to his past accomplishments, is the epitome of a hard and determined worker. Originally from Cherryville, N.C., and now divorced, he has two children - Donell and Marcus. Gilliard, who is a member of Ebenezer Baptist (in Kings Mountain), noted that in the near future, Firestone will sponsor a "Ladies' Car Care Clinic." The clinic, which will be free of charge, serves to aid those who own cars but are not familiar with mechanical troubles. It is hoped that the clinic will alleviate the problem of customers being overcharged or "ripped off" for services they don't need.

Gilliard, who would someday like to own a Firestone company (preferably at the Tryon Mall location where he now works) sends out a very special "thanks" to those employees who helped him to his advancements.

## To General Manager

# WGIV Parent Company Promotes Hal S. Harrill

By Teresa Burns  
Post Staff Writer

There's a lot going on at WGIV radio station. The station, for one, has been sold by Broadcast Enterprises National To Harris Communications. Owner of Harris Communications, Garfield Harris will be the new president depending on Federal Communication's (FCC) ruling. Second, Jim Black will return to the station as Station Manager.

And there's something else - Hal S. Harrill was recently named vice president and general manager of New Giv, Inc., parent company of WGIV. Harrill's duties involve the entire operation of the station, including national sales, acting in behalf of the company during legal matters, and more.

Harrill was promoted from sales manager following the death of Kenneth Goldblatt, former vice president. In 1968 Harrill came to WGIV as a salesman and in 1972 was promoted to Sales Manager. Before that he managed Arthur Smith's recording studio for five years, and worked at an electronics firm for eight years. He has lived in Charlotte since 1940, and at 51 he realizes many of the needs of the people. He wants WGIV to be, not only a music station, but also a helpful one.

"Our goal is to get the station involved in the community. We will continue to stress voter registration," he related. There will be a continuation of WGIV Block Parties and discos in the communities as well, according to Harrill. The Mountain of Food Drive



**HAL HARRILL**  
...WGIV vice president

(last year 8,000 families were aided at Christmas) will also be continued.

While Jim Black's job will cover the promotions aspect and conjuring up innovative ideas to aid the community, Harrill's job will encompass making money to pay for the community activities.

Just as important, Harrill continued, "...is that the community feels like WGIV is their station. We welcome any suggestions from the community."

Many say it is important for one to enjoy his job in order to be successful at it.

If this is true, then Harrill will have few problems dealing with the challenges of operating a radio station.

"I couldn't be happy doing anything but radio. It's not boring and you never know what's going to happen," he stated.

Once away from the station, Harrill is involved in many church and community-oriented organizations. He attends St. John's Baptist Church where he has sung on the choir for 25 years. He is a member of the Charlotte Advertising Club, and enjoys being a Mason.

Merchants Who Advertise In The Charlotte Post

Are Telling You They Appreciate Your Business.

Patronize Them!

## DEEP PORE LIQUID CENTER



Deep clean and moisturize for baby soft skin. Dry, oily or combination skin. With special sun screens to protect from peeling and drying. For that clear clear look that clears away germs and bacteria. Cleans away dead cells and holds moisture under make-up. A few drops massaged into the skin will reveal its glow.

From your favorite cosmetic counter or send \$4.50 to:



**THE HOUSE OF CHARLES**

2311 LaSalle St.

Charlotte N.C. 28216

## Washington Height Garden Club News

A meeting of the Washington Height's Garden Club, hosted by Mrs. Gertrude Williams was held on last Tuesday evening at the home of Mrs. Lois Scott at 1615 Taylor Ave.

The meeting, presided by Mrs. Scott (president), was centered around preparations for the club's annual picnic, which will take place at Hornet's Nest Park on July 19th at 2:30. All club members are expected to be present and are asked to bring a covered dish and a guest. During the meeting, plans for the club's State Convention were also discussed, which will convene in Asheville, N.C. on the 1st of August.

President Scott, who will attend the conference with Mrs. Nancy English, hopes that additional club members will join them for the trip. Ms. Scott noted that the club is in the process of ending this year's work, and that the new year begins in September. She praised the club for working so diligently this past year, and said: "we accomplished two events this past year that we had never tried. We had an anniversary celebration for the first time ever in the club's 39 year history, and also sponsored a fall festival. It was great and as a whole, we lived up to our obligations for the year. We are planning even greater things for the upcoming year."

Ms. Scott, in noting that the club has adjourned until September, said the first meeting will take place at the home of Mrs. Viola Allison, of 5301 Elderbank Drive. She urges all members to be present so that they may hear the reports being presented. Members present at the last meeting were: Mrs. Lois Scott, Mrs. Nancy English, Mrs. Ethel Choate, Mrs. Viola Allison, Mrs. Willette Patterson, Mrs. Lillie Mae Carter, Mrs. Cora Gaither, Mrs. Gertrude Williams, Mrs. Jessie Lee Hamlin, Mrs. Pearl Phillips, and Mrs. Genia Sizemore.

Keep your out-of-town friends informed on what's happening in Charlotte by sending them a copy of the Charlotte Post each week.

## The new Chevrolet Caprice for 1980. We made it right for more family mileage.

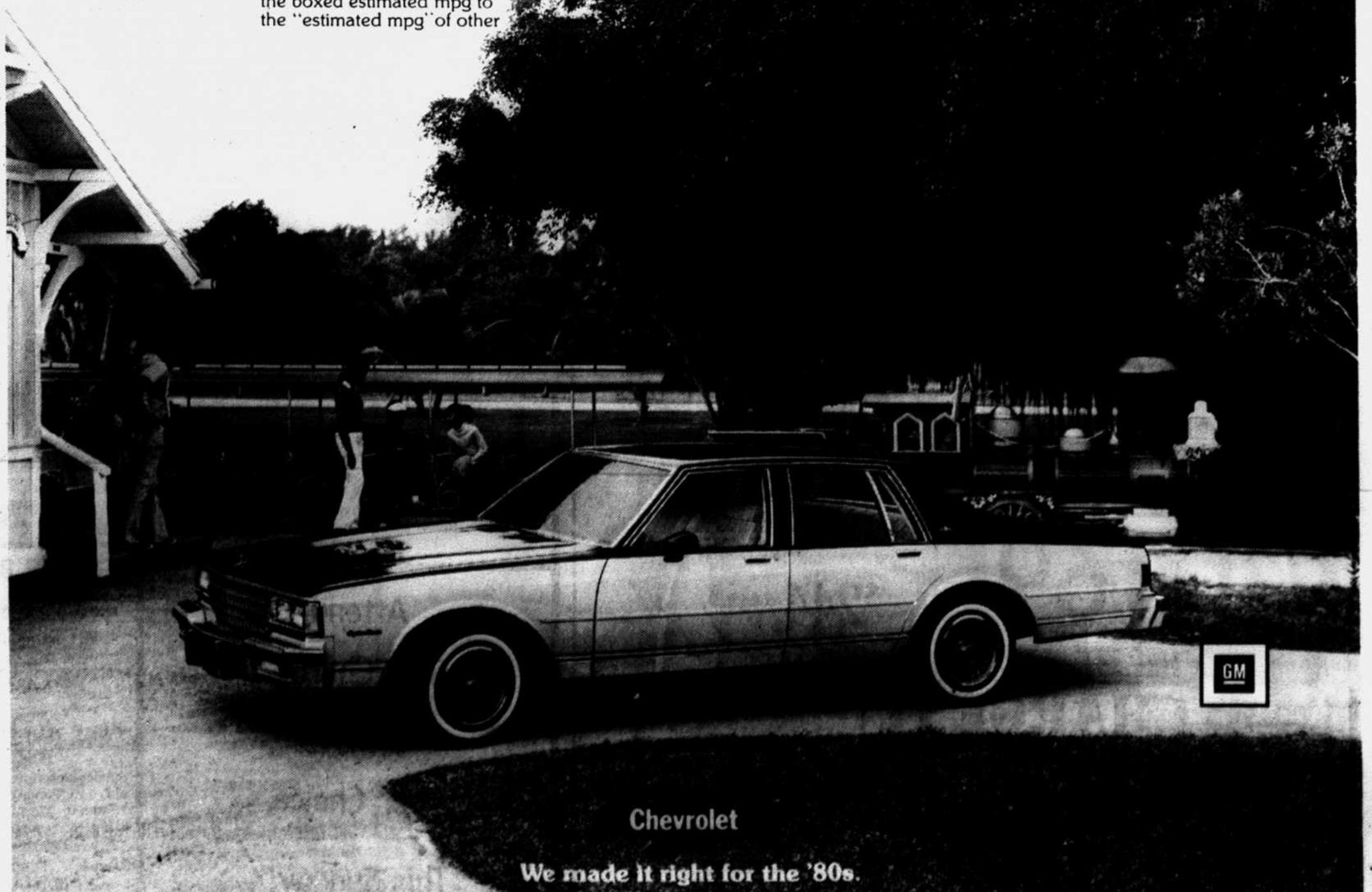
New technology is what makes the Chevrolet Caprice a great family car for the '80s. A standard 3.8 liter V6 engine offers the highest EPA gas mileage estimate ever in a full-size Chevrolet.

That gives you 450 miles estimated driving range and 650 miles estimated highway driving range. The greater the driving range the fewer the fuel stops. The Caprice's new aerodynamic shape and easy rolling tires contribute to its impressive fuel economy. Even though Caprice has been reshaped, it still offers six-passenger roominess, ride and comfort. It even has more useable trunk space than last year. Plus new anti-corrosion protection and engineering advances that make it a great family car to own. See one now at your Chevrolet Dealer. We think it is right for the '80s. You will too.

Remember: Compare the boxed estimated mpg to the "estimated mpg" of other

cars. You may get different mileage, and range, depending on how fast you drive, weather conditions, and trip length. Your actual highway mileage and range will probably be less than the highway estimates. Driving range estimates were obtained by multiplying the EPA mileage estimates by the car's 25 gallon fuel tank capacity. The new Chevrolet is equipped with GM-built engines produced by various divisions. See your Chevy dealer for details.

<b>18</b> EPA EST. MPG	<b>450</b> EST. DRIVING RANGE
<b>26</b> HWY EST.	<b>650</b> HWY EST. RANGE



Chevrolet

We made it right for the '80s.

