

# THIS I do for you . . .

THIS I DO FOR YOU young people who will follow me . . . young men and women whose faces I may never see and whose names I may never know.

THIS I DO FOR YOU, not just to be remembered but for the joy of helping you to grow and to learn so that you might realize wonderful possibilities and potential.

THIS I DO FOR YOU because so many did so much for me that I can never repay, except by doing for others.

THIS I DO FOR YOU because I believe that Christian higher education is a wonderful gift which endures.

Christian higher education for a young person is a lasting (forever) gift that can't be taken away. It endures! You can help give a forever gift to young people at Chowan College. Just imagine what wonders your gift might work and keep on working.

Consider reaching for forever by making an endowed gift, a living trust, through your will or your estate. You can make a lasting gift which will keep on giving forever and that's a long, long time. It's easy to do. You can begin right now and we are anxious to help you. Limitless opportunities are open to you at Chowan College.

Call me at (919) 398-4101 or write to me and I will personally share with you both opportunities and ways for you to reach out for forever.

Bobby S. Cross  
Director of Development  
Chowan College  
P. O. Drawer 37  
Murfreesboro, N. C. 27855

I want to do my share to aid future generations and to insure the continuity of Christian higher education through Chowan College.

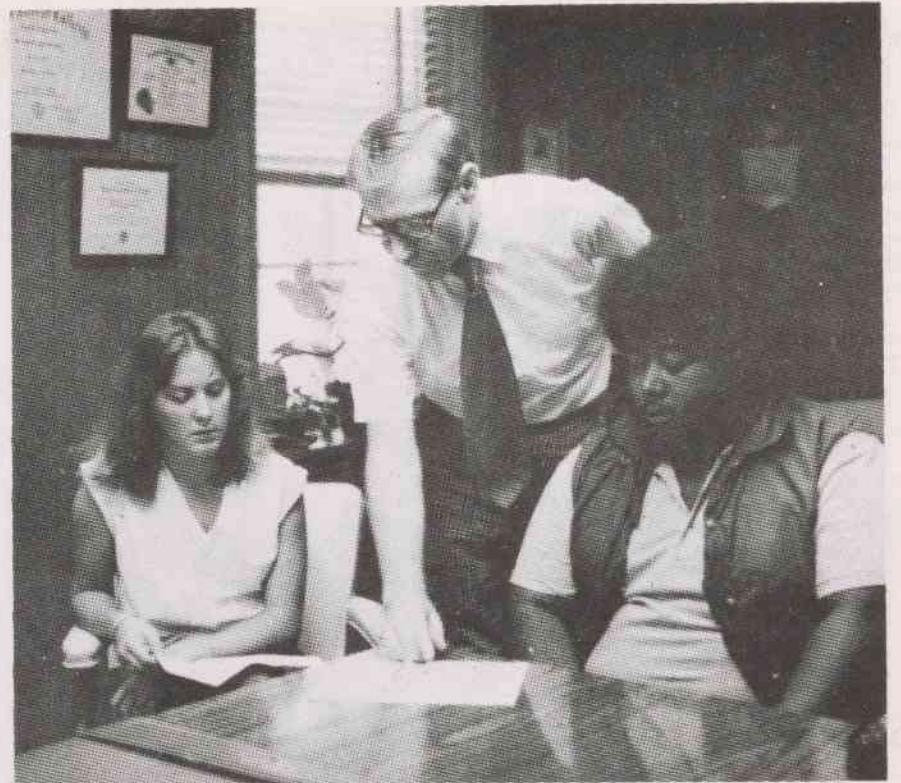
I would like to know more about:

- ( ) Forever gift opportunities
- ( ) A bequest through my will
- ( ) A living forever trust
- ( ) A special endowed fund
- ( ) A gift of life insurance

Name \_\_\_\_\_

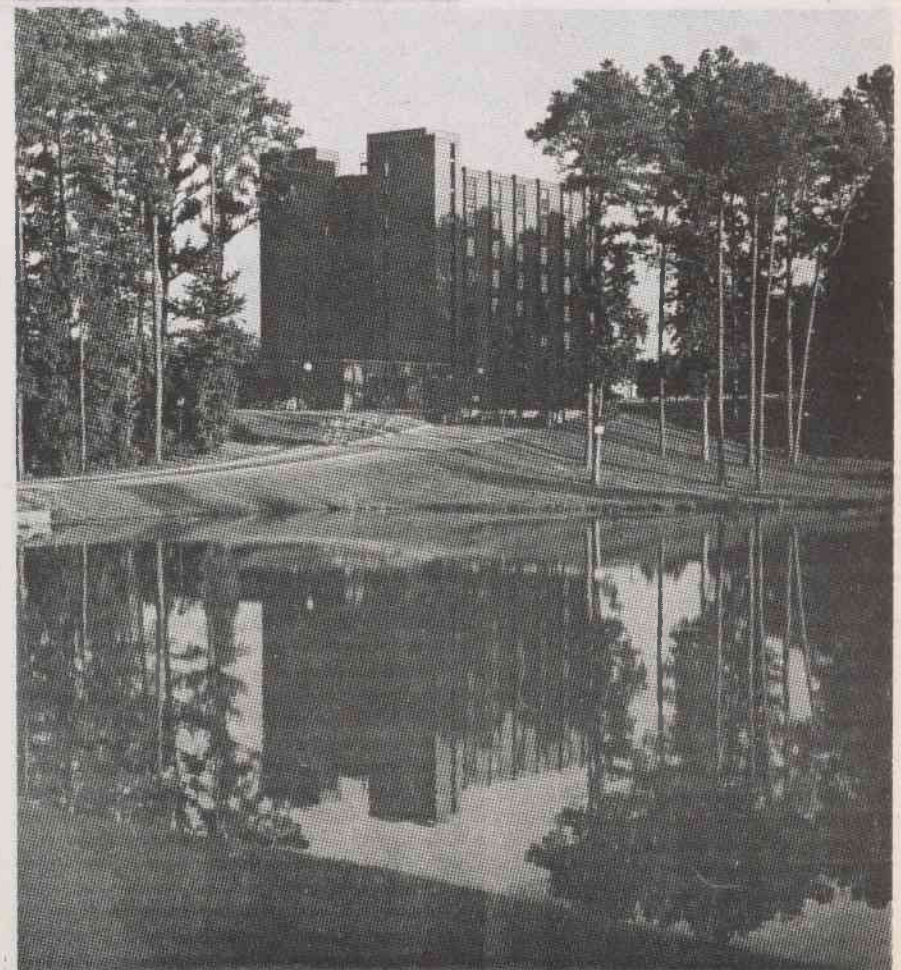
Address \_\_\_\_\_

Telephone \_\_\_\_\_



## 'Type Indicators' Discussed by Dean

Wanda Jean Sowell and Larry D. Cooper, commuting students from Murfreesboro, discuss their results of the Myers-Briggs Type Indicator with Dean of Students Clayton Lewis. The Myers-Briggs Type Indicator is a forced-choice questionnaire which helps people become more aware of the ways they prefer to perceive or learn and make decisions. "This self-reporting instrument also points out the strengths and weaknesses of one's personality type," Dean Lewis said. The Myers-Briggs Type Indicator was given to all first-time students who enrolled at Chowan this fall. Wanda Sowell and Larry Cooper are graduates of Murfreesboro High School.



One of the most picturesque settings on campus during the fall months, is Parker Hall and its reflection in Lake Vann. The tall pines and other trees, draped in fall colors, add beauty to the peaceful scene.