

Short Courses Are Cancelled

Word Received Here That War Program At State College Will Cause Annual Feature To Be Postponed

Shortages of transportation and labor have led to the cancellation of Farm and Home Week and 4-H Short Course, annual events on the State College summer calendar. Housing accommodations at the college this summer will be another problem, due to the fact that N. C. State is on a wartime basis and will be used to train 1,000 or more technological students for emergency work.

"One of the main factors in reaching this decision," Dean I. O. Schaub said "is the matter of transportation. With the very critical situation as regards rubber, and the rationing of gasoline which became effective May 15, the question of transportation becomes a major factor. Already bus and rail facilities are running at capacity, and quite often public utilities have to cancel regular schedules in order to take care of troop movements."

Launch Program To Use Lettuce

Food Value Of This Produce Crop Is Being Widely Recommended By Officials

Local stores are now featuring exceptionally good buys on lettuce and local homemakers are taking advantage of excellent crops this year, according to statements of Brunswick county merchants this week.

Genevieve Eakes, County Home agent said the lettuce crop is especially abundant this year and she urged local homemakers to serve as many lettuce dishes as possible.

According to nutritionists of the United States Department of Agriculture, green lettuce is a good source of carotene which the body changes into vitamin A. In addition it has some vitamin B, some riboflavin and some vitamin C. Beside these vitamin contributions, lettuce is a good source of the minerals, iron and calcium. The white leaves, called bleached lettuce, are not as good a source of these food values as are the green leaves. As far as iron and carotene are concerned, the thinner and greener the leaf, the more of these the lettuce contains.

Genevieve Eakes passed on these "tips" from the Department of agriculture about the preparation of lettuce:

"Cut out the core of the lettuce with a sharp pointed knife. Then put the head under running water and let-water run in where core has been removed. This loosens and freshens the leaves—making it easy to slip the leaves off—each leaf, whole and unbroken—for use in preparing salads and sandwiches.

"Naturally, a lettuce leaf under a salad or in a sandwich will not contribute a whole lot of food value. To get the good from lettuce eat more of it.

"There are many ways to fix lettuce. It is a perfect vegetable for salad and it gets along well with almost any vegetable combination. Wilt shredded head lettuce or leaf lettuce in a heavy skillet with some well-flavored fat—and season it with vinegar and chopped onions. Or cut head lettuce up in fourths and braise it just like you do cabbage."

which the body needs for good appetite, digestion and steady nerves. She showed posters of linen of all grades, posters of dinner ware, glass ware, and silver ware also a poster on how to set one's dining table, explaining to the club how to tell the finest grades of this ware. The best grades are the most expensive, but from lots at the store today one can buy ware that is not as expensive and set the table with a choice of a pattern of the inexpensive dinner ware, glass ware and silver ware that will look nice.

Mrs. McRacken gave to members present receipts on how to make liquid yeast. She also checked in Red Cross sewing.

Mrs. Thelma Harrison, recreation leader, read poetry to the club which was enjoyed very much by all present.

A new member Miss Pauline Smith joined the club, all are glad to have her.

Mrs. Smith, the hostess, served delicious fruit salad with whipped cream topped with cherries. Vanilla wafers were served with the fruit salad to the following: Mrs. Thompson McRacken, Mrs. Thelma Harrison, Mrs. Henry Smith, Miss Pauline Smith, Miss Collins, Mrs. Henry Smith's daughter, also Mrs. Smith's little granddaughter, who is visiting her grandmother and Little Miss Katie Lee Crocker.

Fire reduces revenue to county and state by reducing taxable wealth.

Tire Situation Growing Worse All The Time

(Continued From Page One) of these jobs, to try to buy a sound tire carcass to have fixed.

There has been a change in the basis for issuing permits for canning sugar, and it now appears that persons who have been in the habit of doing extensive home canning will be able to get more than the 5-pounds per person that was announced as the original plan.

From all sections of the county have come queries concerning the program for enforcing price ceilings. The local board has very little information on this matter thus far, and just as soon as the plan of action has been mapped out, the merchants in this county will be notified. Meanwhile they are advised to follow common-sense practices.

PLANE SPOTTERS CALLED "MINUTE MEN" OF WAR

(Continued From Page One) lan, or, if none of these, as enemy. If they are enemy, pursuit planes are sent rocketing to the attack armed with an exact knowledge of hostile positions and strength which may well prove fatal to the enemy.

Once the fighter planes are dispatched into the air, they are directed by radio up to the moment of actual contact. The airplane spotters make this possible. They are the eyes and ears of the pursuit pilots. They endow them with a kind of clairvoyance which enables the pilots to know what is occurring in the sky for hundreds of miles around him. No matter how numerous the enemy is, no matter how he may change his course, there are always a thousand eyes to note and report his actions to the Filter Center, where, in turn, it is relayed to the men in the air.

These airplane spotters form part of a tremendously important, gigantic ground crew which "Keep Them Flying." Their job is difficult, frequently tedious. They work night and day in all kinds of weather. Where the Post is undermanned, as is sometimes the case, their hours are long. But few complain. They know that upon their unrelenting vigilance may depend the security and future of their countrymen.

Additional volunteers are still needed in this county to man observation posts. Applications may be made to Jim Finch, Winnabow, N. C., County Director, Aircraft Warning System.

AMUZU THEATRE SOUTHPORT
Program For Week Of June 3 - 10

Wednesday-Thursday
"HONKY TONK"
Lana Turner and Clark Gable
SELECTED SHORT

Friday-Saturday
"Tanks A Million"
James Gleason and All-Star Cast
SELECTED SHORT

Monday-Tuesday
"SHANGHAI GESTURE"
Gene Tierney and Victor Mature

Two Teachers For Southport

Principal W. R. Lingle Announces That Two Additional Have Been Secured For Local Faculty

W. R. Lingle, principal of Southport high school, announces the election of Miss Josephine Corbett, of Wilmington, as home economics teacher at Southport high school.

Another vacancy in the local school faculty will be filled by Miss Carolyn Stanford Albright, of Winston-Salem, who will teach in the grammar grades.

Mr. Lingle plans to attend the first session of summer school at the University of North Carolina and will leave for Chapel Hill within a few days.

A gentleman cruising in the Mediterranean wrote home to his son: "I am now standing on the edge of the precipice from which the ancient Spartans flung their defective children; I am sorry you are not with me."

STATE COLLEGE HINTS FOR FARM HOMEMAKERS

BY RUTH CURRENT
STATE HOME AGENT

So far as health is concerned, we can get along with absolutely no sugar. Sugar supplies fuel or energy to the body but other foods can do this just as well as sugar.

Do something every day at home to help win the war.

There's an old saying—maybe you remember it—that "a good hoeing is worth as much as a shower." Even a heavy shower does little good if most of the rain runs off. But a good hoeing keeps down weeds. Weeds draw heavily on the moisture in the soil. The fewer the weeds, the more moisture saved for the crops.

"Tickle the ground with the hoe, and you will make it laugh with a harvest."

Don't let the insects get ahead of you in the garden. Make plans for a fall garden by buying seed now. Don't wait; seed will be hard to get later.

Save two tons of hay for every cow you expect to keep. Hay will be high next winter and hard to get.

Prune shrubs that have finished flowering but do not prune those which produce berries.

Prune only those plants that need it.

Cape Fear Club Women Meet

The Cape Fear Home Demonstration club met with Mrs. Herman Smith last Wednesday afternoon at 3:30 o'clock. The meeting was called to order by Mrs. Henry Smith, the roll called and last month's minutes were read by the Secretary, Miss Lillian Collins.

The club members missed having Miss Eakes at the meeting. Substituting for Miss Eakes was Mrs. Thompson McRacken, who gave a demonstration. She first displayed a small hand flour mill and showed how grain could be ground for house use. This mill is especially useful for the grinding of whole wheat. Yellow corn was ground into meal at this meeting as a demonstration. She gave out whole wheat pamphlets on how to make whole wheat bread, explaining the value of whole wheat saying we should eat more of whole wheat because of the excellent source of energy, minerals and vitamins. She said it is valuable as a source of vitamin B.

plies on hand—things like fuel, purchased feed, and groceries. This will not only save trips but will assure having them on hand in time of possible transportation tie-ups.

5. Arrange storage space so you can hold your produce at home for a time, in case of unexpected transportation shortage.

6. Eliminate driving in bad weather so far as possible. Wet roads, ice, and mud are hard on tires.

7. Finally, look ahead a year or two or three. How will you be fixed then for car or motortruck? Remember, for more than a hundred years virtually all the farm produce in this country was hauled to market by animal power. Don't let the matter of horse-and-wagon equipment get entirely out of your mind. We helped to win one World War that way and we can win another that way if we have to—and we may have to.

Stanaland Files Affidavit Charging Irregularities

(Continued From Page 1)

4. That he is informed and believes that there were certain irregularities committed in connection with the conduct of the registration of voters immediately prior to the primary date of May 30, 1942, and

5. That he is informed and believes that on the said date of the primary there were numerous irregularities committed by the registrars and judges of election in Southport precinct in Smithville township and the other 15 precincts of the county, and

6. That the said irregularities, non-performance of duties and violations of the election laws by the aforesaid election officials at the said precincts are contrary to the purpose and intent of the election law, and

7. That the aforesaid violations resulted in the affiant receiving the total of eight (8) votes in Southport precinct out of 472 cast, and your affiant is informed and believes that he received a much larger vote at said precinct than that tabulated by election officers of said precinct, and

8. That your affiant is informed and believes that a number of ballots were thrown out in several precincts as spoiled for the reason only that the district solicitor was marked improperly, which does not affect the office in which your affiant was contesting and which is contrary to intent of the election laws and not in conformity with the practice and system used."

Ruark Defeats Stanaland In Race For Nomination As State Senator

(Continued From Page One)

eligible to file. However, there has been no indication thus far regarding the plans of any of the candidates.

R. W. Woodside was high man in the race for board of education with 1163 votes. G. T. Reid was second with 1111. Third man in the race was Houston Reynolds, with 682 votes.

Clifton L. Moore led the race for district solicitor with 864 votes to 659 for Alton A. Lennon. David Sinclair, incumbent, trailed with 560, but if a second primary is called it will lie between Moore, who was high in the district, and Sinclair, who was runner-up over the four counties.

To Senator Josiah W. Bailey goes the honor of leading the entire ticket with a vote of 1450 to 478 votes for Fountain.

There didn't seem to be much interest in the fact that there was a primary contest between two men for the Republican nomination for the U. S. Senate. In this county Klutz, who has a brother in Brunswick, gained 38 votes to 35 for Morris.

TRANSPORTATION IS FULLY DISCUSSED BY FARM LEADERS

(Continued from page one)

started and brought to an orderly arrangement whereby the use of neighborhood vehicles can be rotated and every possible mile of service can be gotten out of these tires and trucks.

b. The organization of farm and locally owned trucks to piece out the service of each and stop the unnecessary duplication of trips is a job that finally comes down into every farm neighborhood—and it is a job that needs to be done quickly.

The following suggestions are offered for the conservation of farm cars and trucks:

1. Arrange with one or more neighbors to exchange trips. Do all your regular hauling, so far as possible, on that basis. Form a little group on your road to do this in a systematic way. Pool your loads.
2. Don't go "empty." If you have an errand in town, contact your neighbors and take everybody on the road who needs to go that day—then let them do the same by you. Make similar arrangements for small partloads of produce. Don't make a trip alone with just a bushel of potatoes or a sack of grain, nor to get one or two small items of supplies. "Double up." Cooperate with your neighbors.
3. Plan your buying in town so as to save trips.
4. Arrange to keep larger sup-

ELECTION BOARD VANVAAS VOTE

(Continued From Page One)

in the courthouse in Southport, beginning at 8:30 P. M., (War Saving Time) on Wednesday, June 3, 1942, wherein affidavits supporting allegations as set forth in the petition of Walter M. Stanaland be presented, that the Board of Elections might be able on hearing the evidence to decide whether a recount of the bal-

Complete Financial Service

Efficient and Economical . . .

- Checking Accounts
- Savings Accounts
- Agricultural Loans
- Real Estate Loans
- Personal Loans
- Commercial Loans
- Safety Deposit Boxes

Your Financial Friend

Waccamaw BANK AND TRUST COMPANY

MEMBER FEDERAL DEPOSIT INSURANCE CORPORATION

What You Buy With WAR BONDS

Navy Cruisers are built in two classes, light and heavy, the latter displacing about 10,000 tons. Our navy has about an equal number of light and heavy Cruisers, the 10,000 ton Cruiser costing approximately \$20,000,000. Many Cruisers are under construction and many more are needed.

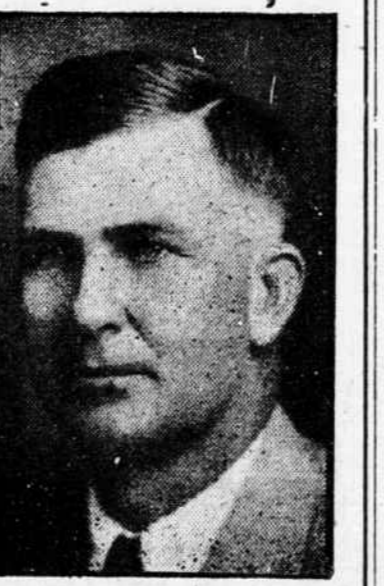


To pay for these speedy and powerful ships with their heavy guns and armament we must buy War Bonds. Citizens of a large town or a given community, working in unity, could buy one of these ships for the Navy if they put at least ten percent of their income in War Bonds every pay day.

U. S. Treasury Department

MY APPRECIATION

I appreciate the confidence in me as expressed by the voters of Brunswick county by their vote in the Primary Election Saturday. I appeal now for your continued support.



J. B. WARD

THANKS, FOLKS

The vote you gave me on Saturday in the Democratic Primary makes me feel mighty good, and I want to thank my friends throughout the county for their support.

STEVE MINTZ



THANKS

I sincerely thank the voters of Brunswick, Columbus, New Hanover and Pender Counties for the splendid vote and support given me in the Democratic Primary last Saturday, which enabled me to take a substantial lead in the race for District Solicitor. If I am elected District Solicitor, I pledge my best efforts to the efficient, conscientious and prompt attention to the duties of this important public trust. I wish it were possible for me to see each voter and personally express my appreciation. I frankly seek the continued support and co-operation of the people of the District.

CLIFTON L. MOORE

FLUE REPAIRS

We have a stock of repair parts for tobacco flues on hand, and we advise you to look after these matters now.

For poisons and other materials for insect control in your tobacco patch come to see us. We have what you need.

SHALLOTTE TRADING CO.

Hobson Kirby, Prop.

SHALLOTTE, . . . N. C.

BIG WINNER AT DINNER

Yes, we're a Pepsi-Cola family, too. Lunch, dinner, anytime—Pepsi-Cola's got what we like and plenty of it! Finer flavor, purity and good taste . . . all in that big 12 ounce bottle. All for 5¢.



BETTER TASTE . . . BIGGER DRINK

Pepsi-Cola is made only by Pepsi-Cola Company, Long Island City, N. Y. Authorized Bottler: J. W. Jackson Beverage