

WASHING MACHINES

REFRIGERATORS

ELECTRIC RANGES

FIELD & GARDEN SEED

CARLOAD 5-V GALVANIZED ROOFING  
Just Arrived

GLEEM PAINT

We handle a full line of the famous paint and varnish. We also have linseed oil, brushes and other supplies.



Shalotte Trading Co.

Hobson Kirby, Prop.  
SHALLOTTE, N. C.

### 1949 Dodge To Be Shown Here

New exterior styling, greater interior roominess and a new, higher compression engine, feature the new Dodge which goes on display at Williamson Motor Co. at Shallotte Friday.

Pre-showing announcement of the new line was made by L. L. Colbert, president of the Dodge Division of Chrysler Corporation.

Dodge models are being manufactured on two wheelbases. The new Coronet and Meadowbrook on a 123 1/2 inch wheelbase, a 4 inch increase, replace the former custom and de luxe cars. A wholly new addition to the Dodge line is the lower-priced Wayfarer on a wheelbase of 115 inches.

First public showing of the new Dodge will be on February 25th in the more than 400 dealer showrooms across the country.

"The new Dodge has been designed from the inside out to provide more head room, leg room and elbow room," Mr. Colbert said. At the same time, he emphasized that exterior dimensions have been decreased. The new models are lower in height, shorter in overall length and narrower in overall width in comparison with previous models - well-

come parking and garaging news.

In the Coronet and Meadowbrook models, front seats are six inches wider and rear seats nearly eight inches wider. Dodge "knee-level" seats have been retained and head room is now the same for both front and rear seat passengers. In relation to the rear axle, seats have been moved forward to further improve Dodge's well-known "cradled ride." The new stationary footrest for rear seat passengers is scientifically placed for proper support and rear seat leg room is unaffected by the five inch travel adjustment of front seat.

### Maintenance Of Tractor School

Extension Specialist Will Conduct Two Demonstrations In Brunswick County On March 2

J. C. Ferguson, agricultural engineer with the Extension Service, will hold two tractor maintenance schools in this county on Wednesday, March 2nd. At 10 o'clock and 2 o'clock.

According to County Agent A. S. Knowles, Mr. Ferguson will be at the Bolivia school at the 10 o'clock meeting and in the afternoon he will be at the Waccamaw school.

It is desired to have as many tractor operators as possible to attend one or the other of these schools. Mr. Ferguson stresses care and maintenance of all farm and other tractors. Among the subjects he will handle will be the general principles of internal combustion engines; fuel and carburetor adjustments; cooling systems; lubrication; oil filters and air cleaners; ignition; operation, safety and storage.

### AMERICAN LEGION MEETING

Adjutant Crawford Rourke of the Brunswick County Post No. 194, says that it is very important for all members to be present at a meeting at the Legion hall Thursday night, February 24, 7:30 o'clock. Visitors will be welcomed. Refreshments will be served.

### MINNIE BALL REVIVES

(Continued from page 1) old St. Phillips Churchyard on Orton Plantation.

Colonel Rhett, or Colonel Smith, to give him his real name, had a falling out with his brother, Benjamin, went to South Carolina

and adopted his mothers maiden name of Rhett. The Rhetts are still one of the illustrious South Carolina families.

At the height of Stede Bonnett's glory as a pirate, Colonel Rhett was sent from Charleston to capture him. When the Rhett ship arrived in the Southport harbor Bonnett's ship was lying at the mouth of Fiddlers Drain, now officially known as Bonnett's Creek. The ship was taking on water when Rhett arrived.

Sail was gotten up immediately on the pirate vessel with plans to get into position to fight. In the hurried get-away from Bonnett's Creek the pirate vessel ran aground on the eastern end of Battery Island. It was low tide and the vessel stuck there.

Getting into position to force the surrender of Bonnett or to batter his ship to pieces, the vessel of Colonel Rhett also ran aground. The two ships hammered away at each other with their cannon for some hours. Then the Rhett ship floated first and he was able to work around to where all of his guns could be brought to bear on Bonnett's vessel.

Bonnett surrendered and was taken to Charleston, tried and hanged at the docks in that city.

The pay-off to this story is that the ship of Colonel Rhett is said to have been aground in a direct line between the grounded Bonnett vessel and the Rappahannock home, where the minnie ball was found this week. It is reasonable to suppose that it was fired from the Bonnett vessel at the Rhett ship and that it hurtled over into the town, about one mile away.

## FOR SALE

150 Bushels N. C. Seed Peanuts

For Delivery At My Place  
Leebuck Road — Brunswick County

JULIAN K. TAYLOR

Wilmington, N. C.

25 Mules  25 Mules

We unloaded recently another load of fine, young mules. All are from 4 to 6 years old, Gentle, Kind and Broke, weighing from 1,050 to 1,250 pounds...

COME AND GET YOUR PICK TODAY!!

CASH or TERMS

S. L. Fuller & Bro.

Whiteville

# Why Take Chances?

# BUY YOUR TRACTOR

WHERE YOU WILL GET GENUINE

# Factory Service

THAT YOU ARE ENTITLED TO

Where The Warranty Period Is Backed by International Harvester

Yes! New Tractors Are Coming Through Better

We Have Received **36 New Tractors** In The Last 2 Weeks

Most Of These Are Promised — But There Are More Coming!

## Get Your Order In Line NOW

Buy From The People Who Have Consistently Tried To Keep The Price Of Machinery At A Low Enough Level, To Be Within The Reach Of ALL FARMERS, Even When The Machinery Was Scarce—

We Have a Few Farmall "C" and Farmall Cubs for Immediate Delivery

Also Several Rebuilt and Guaranteed Used Tractors

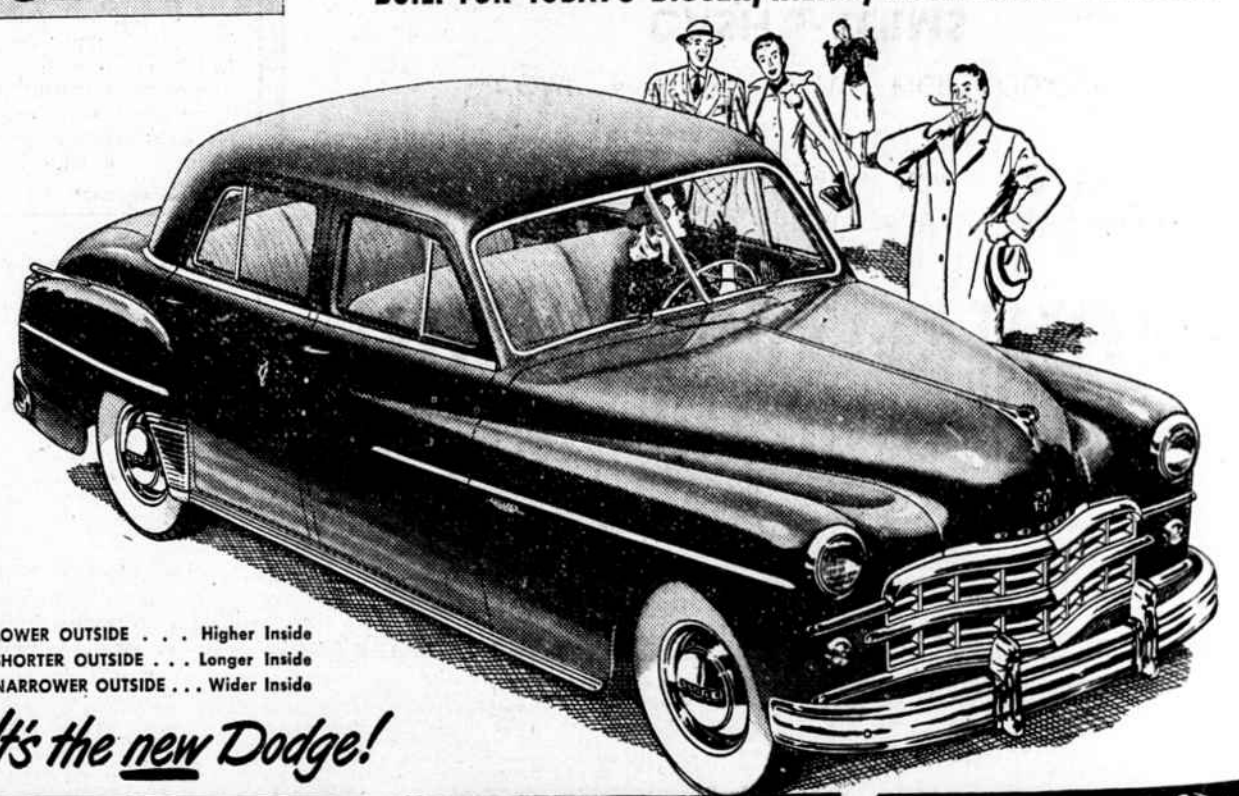
MARKS TRUCK & TRACTOR CO.  
Your International Harvester Dealer  
Whiteville, N. C.

MARKS MACHINERY CO.  
1021 North Third St.  
Wilmington, N. C.

SEE with your own eyes!

## THE DARING NEW DODGE

BUILT FOR TODAY'S BIGGER, TALLER, MORE ACTIVE AMERICANS



LOWER OUTSIDE . . . Higher Inside  
SHORTER OUTSIDE . . . Longer Inside  
NARROWER OUTSIDE . . . Wider Inside

It's the new Dodge!



NEW HEAD ROOM . . . NEW ELBOW ROOM.  
No danger of knocking your hat off in either front or rear seat . . . Wide, wide seats built for three passenger luxurious comfort.



NEW LEG ROOM . . . Real stretch-out room for long legs and tall people . . . and Dodge "knee-level" seats give them full support for comfortable and relaxing day-long trips.



NEW PERFORMANCE . . . New "Get-Away" engine, plus Fluid Drive, squeezes extra miles from every tankful of gas . . . gives you much faster acceleration for safer passing.

When Army physical exams revealed that our wartime generation was far bigger, taller, Dodge started planning this great new car

It's lower on the outside . . . higher on the inside! Shorter on the outside . . . longer on the inside! Narrower on the outside . . . wider on the inside! You will wonder how it was done!

Here's the daring new design . . . distinctive new style . . . natural beauty that flows from truly functional engineering. Here's new elbow room, more leg room

and more head room—plus the amazingly s-m-o-t-h-ride of Dodge All-Fluid Drive. New styling . . . new "Get-Away" engine . . . new luxury and comfort . . . optional Gyro-Matic transmission . . . are only a few of the new things that'll thrill you. But see them all at your Dodge dealer's now. Learn first hand just what the daring new Dodge will do for you.

**DODGE**  
CORONET  
gyral Fluid Drive plus  
GYRO-MATIC  
frees you from shifting

## Williamson Motor Co.

SHALLOTTE, N. C.