

Finals Planned At Local School

Brunswick County Training School Is Now In Midst Of Graduation Exercises, With Many Features Planned

Twenty-four young negroes are scheduled to receive their diplomas at the graduating exercises of the Brunswick County Training School on June 1st. Two of these, Malissa Brown and Viola

Hankins, are honor students. The other 22 to graduate are Maggie Bryant, Ernestine Clemmons, Lonnie M. Fullwood, Ruth Fullwood, Majorie Gore, Lizzie Mae Gore, Virginia Gore, Dolores Greene, Ernestine Grissett, Ernestine Joyner, Laurie Mims, Bertha Reaves, Estelle Stanley, Herbert Bryant, Howard Bryant, Adolph Fullwood, Alfonso McMillan, Rufus Livingston, Howard Reaves, James Smith, Charlie Swain and William Turner.

Principal Alvin Caviness says that the present term has been one in which much progress was made. A fine spirit of cooperation existed between the parents

and teachers. The Parent-Teacher Association, under the guidance of Ella Mitchell, has been instrumental in supplying many needs, including the purchase of a gas stove for the home economics department.

A new vocational building 52 x 86 feet, for training in bricklaying and carpentry is being built for the boys and will be ready for occupancy by the beginning of next term of school. This building is being constructed by voluntary labor of the students assisted by veterans labor of the Agricultural and bricklaying departments, under the supervision

of Jesse Francis of the Vocational Agricultural department; James F. Clemmon, supervisor of the veterans bricklaying program, and H. O. Gore, instructor of the bricklaying department.

It is noteworthy that James Smith, one of the students working under the above instructors, was winner of the second prize in a recent state-wide bricklaying contest at the A. & T. College in Greensboro.

The commencement exercises are continuing tonight (Wednesday) at 8 o'clock with the Glee Club recital. This will be free.

Sunday afternoon, May 29th, at 3:30 o'clock the baccalaureate sermon will be preached by Rev. Granville Peaks, Rector of St. Marks Episcopal church in Wilmington. This will be followed by an open house exhibition of vocational and art products.

Senior class night program will be given Monday night, May 30, and will be free.

Senior graduation exercises will take place on Wednesday night, June 1, at 8:30 o'clock. Featuring this will be an address by Rev. Kenneth Williams, head of religious education at the Winston-Salem Teachers College. He is the first negro to be elected to a city council in the history of North Carolina.

The state flower of Massachusetts is the mayflower.

Parking meters were first installed in American cities in 1935, when six municipalities put them in.

This Saturday Is Poppy Day

Saturday Before Memorial Day Is Set Aside Annually For Sale Of Memorial Flowers Honoring War Dead

Mrs. Lillian Caison, president of the Auxiliary of the Brunswick County Post No. 194, American Legion, and Mrs. Edward H. Redwine, president of the Shallotte Post No. 247, have made preparations for sale of memorial poppies on Saturday and have prepared the following statement:

"Every year on the Saturday before Memorial Day millions of Americans wear little red poppies on their coats. Women of the American Legion Auxiliary are out all day with baskets of poppies, pinning the little flowers on all passers by. The poppies are worn in memory of the men who lost their lives in the World Wars.

"The poppy has become the symbol of the dead—their memorial flower. It has become the sign that the high ideals for which these brave young men gave their lives still live and are honored. The poppy covers the soil in France beneath which many of them lie and on Poppy Day flowers are placed over our hearts, where the memory of the great sacrifice they made for this country is forever enshrined.

"The poppies which will be worn on Poppy Day are not, of course, natural flowers from the battlefields. They are flowers which have even greater significance than any nature could produce. They have been grown in hospitals and workrooms where war's suffering still is going on. They have bloomed under the hands of men disabled in war, the comrades of those in whose honor they will be worn. Their petals are only paper and their stems wire, yet into them has been breathed the spirit of patriotic sacrifice, the spirit of those days when life itself was not too much to give for America.

"We are sure that the Poppy will be on all our coats on Poppy Day."

The Auxiliaries of the Brunswick County Post No. 194 and Shallotte Post No. 247 are striving to put across a most successful sale of these patriotic flowers on

Saturday. Mrs. Virginia Bellamy is chairman of the Poppy Sales Committee at Shallotte and Mrs. Eva Wolfe is chairman for Southport.

Driver Waits Just Around The Corner

Calling all Hudsons, Ingrams, Johnsons and Kellys! In fact, everybody else whose surnames begin with either of the four letters—HJKK—of the alphabet. All these folks must have a new driver license by July 1—that is, if they want to continue to operate a motor vehicle. And long waits are just around the corner.

Maine is known as the "pine tree state".

The thrust of an architectural from side to side; the weight arch is the pressure it exerts the pressure it exerts downward.

BEAT THE HEAT

Be comfortable during the hot, summer days ahead. We have a good selection of summer clothes, suitable for work or relaxation. Come In And Get What You Need.

R. GALLOWAY
General Merchandise
SUPPLY, N. C.

CINDER BLOCKS

New And Used Blocks For Immediate Delivery

G. W. McGLAMERY
Southport, N. C.

CITY OF SOUTHPORT

Tax Notice

1948 City taxes will be advertised in July. If paid during the month of May add 3 per cent for penalty, June add 3 1/2 penalty. July the cost of advertising plus 4 per cent penalty will be added.

E. R. WEEKS

Tax Collector.

Shallotte THEATRE

First show begins each evening at 8:00 o'clock. First Show Saturday at 6:00. Late Show Saturday at 9:15. Sunday Show at 8:30.

Wed., - Thurs., May 25-26
"ADVENTURE OF GALLANT BESS"

Fri., and Sat., May 27-28
"THE BOLD FRONTIER'S MAN"

LATE SHOW—Saturday
And Sunday, May 28-29—
"ENCHANTMENT"

Mon., - Tues., May 30 - 31
"KISSING BANDIT"

Wed., - Thurs., June 1 - 2
"NORTHWEST STAMPEDE"

Love Laughs at Miles...



You're always near by LONG DISTANCE TELEPHONE

No matter how great the distance between you and those you love, you need never feel far away. Like a magic carpet, Long Distance will take you anywhere, any time, quickly.

Many new circuits and switchboards have been added and 9 out of 10 calls now go through while you hold the line. "Voice visits" with out-of-town relatives and friends give so much pleasure for so little cost.

SOUTHERN BELL TELEPHONE AND TELEGRAPH COMPANY

Three % Dividend

NOW BEING PAID ON OPTIONAL AND FULL - PAID STOCK EFFECTIVE AS OF JANUARY 1ST, 1949.

This increase in dividends authorized by Building & Loan Division of N. C. Insurance Department after a recent audit which disclosed earnings adequate to cover this increase.

Certificates for Limited amounts of Full-Paid Stock are now being issued.

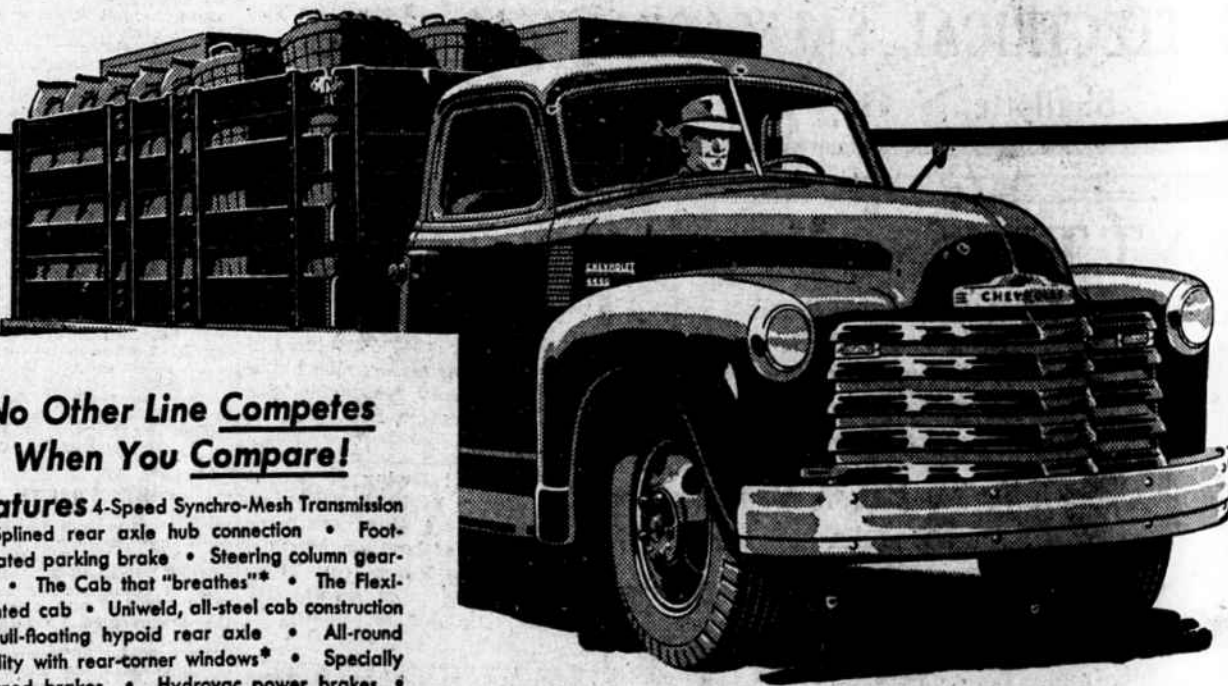
Invest Your Savings With Us

SOUTHPORT BUILDING and LOAN ASSOCIATION

"Established 1911"
Southport, N. C.

For Greater Value America Buys More CHEVROLET TRUCKS

than any other make



No Other Line Competes When You Compare!

Features 4-Speed Synchro-Mesh Transmission • Splined rear axle hub connection • Foot-operated parking brake • Steering column gear-shift • The Cab that "breathes" • The Flex-Mounted cab • Unweld, all-steel cab construction • Full-floating hypoid rear axle • All-round visibility with rear-corner windows • Specially designed brakes • Hydovac power brakes • Double-articulated brake-shoe linkage • Wide-base wheels • Multiple color options.

Quality It takes the best to build a Chevrolet truck—the finest materials and craftsmanship! That's why there's super strength and durability in every feature of body, cab, engine and chassis.

Performance Chevrolet trucks are star performers with prime power—plus economy! You get low-cost operation, low-cost upkeep with Chevrolet's famous Valve-in-Head engines, the world's most economical for their size!

Prices Pick-ups... stakes... panels... power-packed heavy-duty models—Chevrolet builds them all! And Chevrolet's all-star line of trucks sell at the LOWEST LIST PRICES IN THE ENTIRE TRUCK FIELD!

You can put plenty of confidence in Chevrolet Advance-Design trucks. It's a fact that they deliver the goods. It's a fact, too, that Chevrolet trucks have an exclusive combination of features... that they're built big and rugged to take the tough going. And it's a fact, too, that Chevrolet trucks have 3-WAY THRIFT... that they have triple economy in low-cost operation, low-cost upkeep and lowest list prices! And when you add up these advantages you can see why more people use Chevrolet trucks than any other make! The fact is, they're a great American value!

THERE'S A CHEVROLET TRUCK FOR EVERY JOB WITH CAPACITIES FROM 4,000 LBS. TO 16,000 LBS. G. V. W.

Elmore Motor Co.
BOLIVIA, N. C.