

Control Method On Screw Worms

County Agent Describes Methods To Control This Parasite Which Causes Stock Loss

"There are a good many misstatements about the danger of screw worms," reports County Agent A. S. Knowles. "It's true, they are dangerous if not brought under control, says the County Agent.

Screw worms are caused by a blow fly laying eggs around a scratch, cut or abrasion of hogs, cattle and other domestic animals. The eggs hatch within a few hours and the tiny worms enter at the cut and begin feeding on live tissue. The life cycle may be completed in two to three weeks. Usually the first sign of worms is swelling around the cut or scratch and some drainage.

For treatment, clean out affected place with peroxide and swab with cotton. Apply small amount of benzol to affected part and plug with cotton for 3 to 5 minutes. Remove cotton and any worms that appear dead. Repeat treatment with benzol. Clean af-

fectured part and add a few drops of iodine. Smear pine tar or oil around affected part to repel flies until healed. This treatment may need to be repeated 4 or 5 days later.

Farmers are asked to watch for cuts and scratches on all animals. If any are found they should be treated with a good repellent. Cold weather should stop the trouble for this year. The fly starts out in Florida in the spring and migrates up the coast. The early spring and hot summer favored their progress.

Judge Gets Prevue Of Speeding Case

Among the police stories of the week Patrolman J. C. Taylor of Leland relates how he chased William Haywood McAdams of Graham for 17 miles down Route 76 and into Bladen county before he could stop him.

Both cars were making it at 80 miles per hour, all of the way. Rumor has it that the judge of the Bladen county Recorder's court was going down the same highway in the same direction, but not so fast.

Patrolman Taylor booked McAdams for speeding and reckless operation. He is due to see the judge about it later this week.

Sweet Potato Support Price

U. S. Department Of Agriculture Has Announced Support Prices For 1949 Sweet Potato Crop

The U. S. Department of Agriculture has announced support prices for the 1949 sweet potato crop, reports A. S. Knowles, county agent. For Puerto Rico sweet potatoes the support price September 1 to November 15 will be \$1.50 per bushel. Beginning November 16 and thereafter the support price will be \$2.00 per bushel.

These prices are for U. S. No. 1 grade, washed, and packed in new containers, F. O. B. cars or trucks in car lots or truck loads. Unwashed sweet potatoes are supported at 5c per bushel less than prices quoted above.

After November 30, 1949, the commodity credit corporation reserves the right to limit the rate of delivery by time periods. It is anticipated that potatoes will sell above support price this year.

Gwyn Farm Will Have Good Year

Longwood Man Reported Here Last Week That Cotton Crop Appears To Be Only One Which Is Below Par

Here this week Rice Gwyn, Brunswick's biggest planter, said that his 1949 crop, especially tobacco, was better in both quality and price than last year. He credited this largely to drainage, a practice which he has been carrying on extensively for the past several years.

In addition to a great amount of ditches, the Longwood man has more than 20 miles of canals on his farm, all dug out with draglines and affording an outlet for the drainage ditches.

This year Mr. Gwyn and his tenants had 60 acres in tobacco. On this they averaged about 1450 pounds to the acre, the average returns per acre being about \$750.00, he says.

He has a big acreage in corn and is making a splendid crop, but the winds of the storm of two weeks ago that swept across the central part of the state damaged it somewhat.

Mr. Gwyn said that the one exception to good crops was cotton. The boll weevil has been

According to A. S. Knowles, county agent.

In order to make the check, measure off 25 feet down the middle of a row and harvest the corn from each of the two rows by shucking the corn. Do this in 3 to 5 places in the field. Weigh the shucked corn and get average weight for the 50 foot row.

If the corn is dry use the following factors to multiply with average weight to give yield in bushels: 3 1/2 feet rows use 3.49; for 4 feet rows use 3.05. After making this check, notify County Agent Knowles. Those fields reporting near 100 bushels will be checked by him.

the worst in 20 years he says. With 80 acres in cotton, he will not make more than 25 per cent of a crop this year. This condition or something like it, appears to be general among all Brunswick county farmers who planted cotton this year. However, the general acreage is relatively small.

Mr. Gwyn looks upon drainage as being the greatest improvement that he has undertaken on his extensive lands during the past few years. He has very fertile soils but some of it is low and heavy and was subject to floods until he cut canals, opened drainage ditches and also laid many carloads of tile for drainage. Now he feels that the production of fine crops is no longer a gamble on what the summer weather may be.

Shallotte Boy Back In School

Halstead Holden Reporting To Cross Country Track Squad In Top Condition This Fall

Halstead Holden, popular young Shallotte and Holden Beach man, leaves this week for his final year at the University of North Carolina. A midshipman in the Navy, he is scheduled for two years of sea duty when he finishes at the University next spring.

Young Holden is one of the mainstays of the University track squad. Dethroning Frank Maggee of the V. P. I. in the 880 yard event at the conference meet last spring, he reenters college this week in the best form he has ever shown as a track man.

Last year too many activities during the summer months and a desire to push some of his studies caused him to refuse to go out for the cross country squad in the fall. In the spring he changed his mind and yielded to the requests of the coach.

The rangy young Shallotte boy looks to be and says he is in the best physical condition that he has ever been in. He is the son of Dr. and Mrs. R. H. Holden of Shallotte.

Read The Want Ads

Timely Wreck Monday Morning

Patrolman J. C. Taylor Put To Very Little Extra Trouble When Forced To Bring Two Defendants To Southport Court

It was no trouble at all for State Highway Patrolman J. C. Taylor to bring a couple of fellows to court here Monday. He was just starting to come anyhow.

At 8:45 o'clock the officer was preparing to set out from his home at Leland to appear in court here against various defendants whom he had arrested or cited to appear in the Monday

session. He heard a crash on the highway and in short order had cited Clarence D. Gore to appear for driving without a license. At the same time he cited Freddie Dewey Knighton to come along for reckless driving.

Gore, a sailor, was on his way home on emergency leave, his mother being sick at her home near Leland. He was driving a 1937 Packard and gave the proper signal when he started to make a right turn. Before he could complete the turn the 1947 Studebaker, driven by Knighton, crashed into him, the damage being about \$300.00 divided between the two cars, according to Patrolman Taylor. This damage they

would have to settle between themselves. Judge W. J. McLamb assessed Knighton \$25.00 and Gore the same amount for operating a car without license. No one in either car was injured. Costs for reckless operation and

SNACK BAR

A Delightful Place For A Quick Sandwich Or A Light Lunch.

ENNIS LONG SERVICE STATION

U. S. No. 17 Supply, N. C.

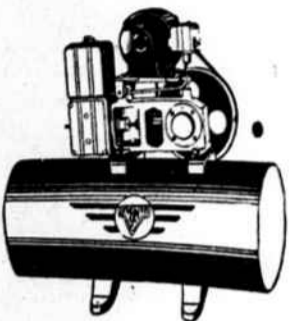
MODERN CONVENIENCES

Next To Electric Lights There Is No Greater Luxury For The Farm Family Than Waterworks.

If you have electric current, then this added comfort and convenience is yours at little cost. You can purchase —

Everite Water System

For As Little As \$88.75



If you are planning to build a new home, or if you have plans for making improvements which will modernize your present home, let us figure with you on Building Supplies, Plumbing Supplies and Electrical Fixtures and Appliances. We have made a study of what the Brunswick county home-owner expects, and we know we can suit you.

R. E. Bellamy & Son

SHALLOTTE, N. C.

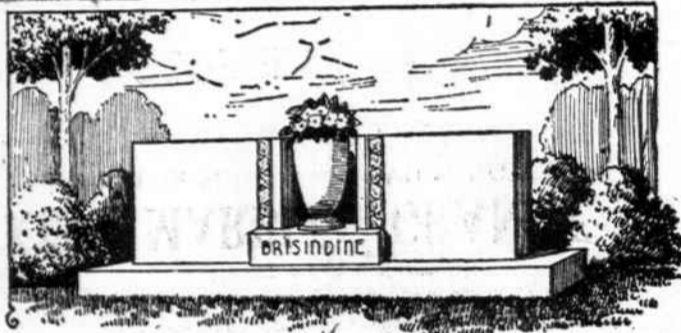
Square Dance

USO BUILDING
Saturday Nite
MUSIC BY
Dixie Pioneers
Gentlemen 75c. Ladies 25c
Sponsored By
SOUTHPORT LIONS CLUB

Asks Farmers To Check Crop

County Agent A. S. Knowles Asks Farmers Trying For 100-Bushels Of Corn Per Acre To Make Survey

All farmers trying to make 100 bushels of corn per acre this year should make a preliminary check to determine the yield, ac-



In God's Acre

Wrapped in the peaceful charm of a beautiful cemetery setting, the memorial becomes an eloquent tribute to the memory of departed loved ones and it gives to the landscape an essentially beautifying touch.

We can supply cemetery memorials of distinction, wrought in the best of monumental stones by the leading craftsmen of America.

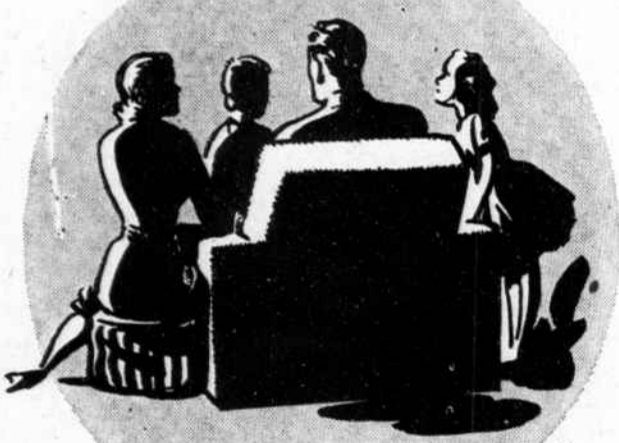
KING MARBLE & GRANITE Co.

892 S. 17th St. WILMINGTON, N. C.

AUTHORIZED DEALER

GEORGIA MARBLE

SECURE THEIR FUTURE



Careful planning now on your part will make their years ahead secure and comfortable. As executor of your estate, our bank will carry out your wishes to the letter. Set time aside to trust over your estate plans with our trust officer and your attorney.

Your Financial Friend

WACCAMAW BANK AND TRUST COMPANY

WHITEVILLE
CLARKTON
SOUTHPORT

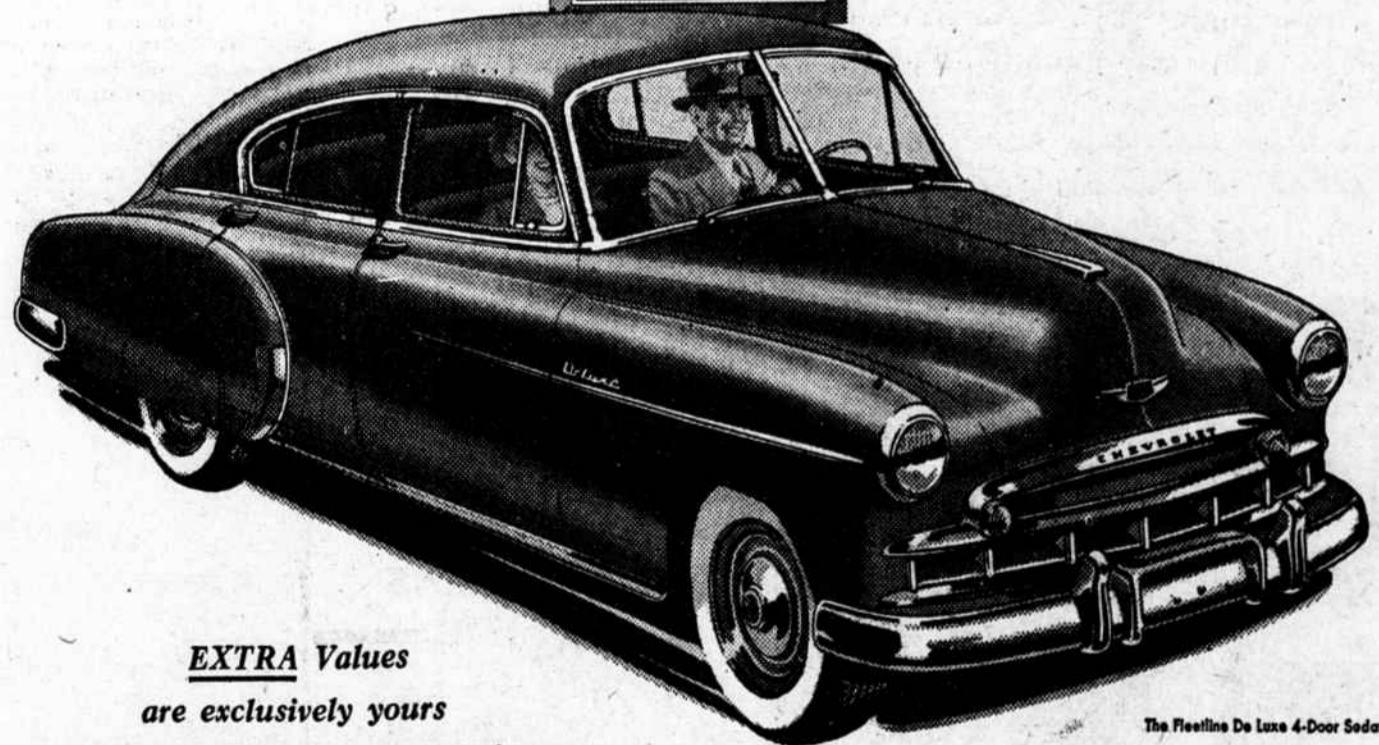
CHADBOURN
FAIRMONT
KENANSVILLE

TABOR CITY
SHALLOTTE
ROSE HILL

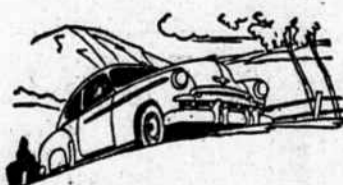
— Member Federal Deposit Insurance Corporation —

Count the EXTRA VALUES

and you'll choose



EXTRA Values are exclusively yours at lowest cost in Chevrolet!



Extra Economical to Own and Operate

and traditionally worth more when you trade; for it's America's most wanted car—new or used!



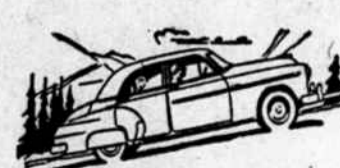
Curved Windshield with Panoramic Visibility

supplying all that extra vision which means extra safety in driving with a fuller, freer view.



World's Champion Valve-in-Head Engine

the extra efficient engine with the valve-in-head design that's setting the trend for the industry.



Longer, Heavier, with Wider Tread

the big car in the low-price field, with all the advantages of more comfort, stability and safety.



Center-Point Steering

with control centered between front wheels for maximum steering-ease and minimum fatigue.



Fisher Body Styling and Luxury

with smooth, graceful curves, new interior richness and extra luxuries as Push-Button Door Handles.



Fisher Unisteel Body Construction

with steel welded to steel above and all around you for the highest degree of solidity, quietness and safety.



5-Inch Wide-Base Rims, plus Low-Pressure Tires

the widest rims in the low-price field—plus extra low-pressure tires—for greater stability and riding comfort.



Certi-Safe Hydraulic Brakes

more outstanding than ever before with new Dual-Life Brakeless brake linings that last twice as long.

ELMORE MOTOR Co. Bolivia, North Carolina