

Southport Loses Wilmington Game

New Hanover JV Squad Pounded Out 56 To 0 Victory On Their Own Field Friday Afternoon

In their first season of football Southport high school had managed until Friday afternoon to escape a humiliating defeat, a penalty that any new squad is expected to pay somewhere along the road to experience. But in their week-end engagement a red-hot Wilmington JV outfit caught them on an off-day and romped to a 56 to 0 victory.

The big wheels in the JV attack were David Alford and Frank McNeil, each of whom scored three times. Richard Hobbs and Walter Huffman completed the scoring parade with one touch-down each.

Southport failed to threaten seriously to score, and after holding the heavier Wilmington boys on fairly even terms during the early part of the game they began to wilt before the steam roller offense in the later stages.

In a contest played on the local field two weeks ago the

Southport boys had made a very creditable showing against their strong rivals. Defeat Friday was not unexpected, but the size of the score is something the local squad hopes to forget this week as they prepare for their final game of the season next Wednesday at Chadbourn.

Photographer Is Here For Scenes

Caterpillar Tractor Company Representative In Southport To Get Pictures Of Working Boats

Traveling in a cabin cruiser in which he has a completely equipped photographic laboratory, Charles Smith, commercial photographer of Washington, D. C., is spending two weeks in Southport. From here he will go to Wilmington for a week and then proceed to Jacksonville, Fla.

Mr. Smith is accompanied by his wife and little son. The trip is an assignment of the Caterpillar Tractor Company of Peoria, Ill. The main object is to photograph Caterpillar Diesels and the equipment they operate in addition to furnishing propelling power for boats.

Most of the 25 or 30 Caterpillar powered boats in Southport have been photographed or will be before Mr. Smith leaves. The work includes trips to sea

with the boatmen and photographing every phase of the shrimping operations, including the winches drawing up the leaded nets.

Where they are desired the Caterpillar Tractor Company's press relations man in Peroria will furnish prints of the pictures now being made to this paper. An offer of any pictures wanted has already been made.

Thieves Enter Russ Store Sunday Night

The store of B. A. Russ at Grissetown was broken into Sunday night and \$12.00 in change that had been left in the cash register was taken. Apparently no goods were taken from the store. Mr. Russ purchased the building and stock from Jesse Clemmons only last week.

On the same night the garage of Oscar Grissette, adjoining the Russ store, was broken into. Apparently nothing was taken from this place, unless it was tools used to break into the Russ store.

Mackerel Catch Continues Good

Daily Catches Reported By Off-Shore Parties Indicate Presence Of These Fishes In Big Numbers

Catches of king mackerel have continued unchecked over the past week with something like a hundred of the beautiful fish being brought in each day by parties out aboard five boats.

Along with the king mackerel about an equal number of bonita have been caught and some amberjack and dolphin. The sharks have been creating a problem, resulting in the loss of much valuable tackle.

In one day this week the Idle-On, Captain Hulan Watts, had two of its biggest and most costly rods snapped off from a combination of inexperienced fishermen and big sharks. Only the reel and two feet of rod was saved in one case and in the other about four feet of rod and the reel. The broken ends slid into the sea, along with it the line, lure and fish the sharks were after.

According to Captain Watts and Captain Howard Victor, when a sportsman gets a fish, he or she has to reel it in as fast as possible. Any slowness results in a shark taking the fish or replacing it on the hook. Some of the more experienced sportsmen have fought big sharks to alongside the boats, where they were shot and killed.

A week-end check of a day's catch brought in by the boats showed the Jim-Jam with 30 big king mackerel and a few bonita; the Botfly, 10 king mackerel, 19 bonita, 2 amberjack and 1 barracuda; Kiabab, 15 king mackerel, 11 bonita; Cadet, 21 king mackerel, 2 bonita; Idle-On, 18 king mackerel, 20 bonita and 1 amberjack. No report was secured from the Moja but its party is under-

Diverted Acres Need Planning

Elroy King, Chairman Of PMA Program, Cautions Farmers Not To Use Idle Land To Create Other Surplus Problems

What farmers do with their diverted acres—the land taken out of allotment crops—may determine future margins of profit or loss and the prosperity of agriculture as well says Elroy King, chairman of the Brunswick PMA committee.

The chairman points out that if these acres are seeded to crops that are now in plentiful supply, it can only result in surpluses of these crops. To illustrate, he points out that farmers who cut their wheat acreage to keep within the wheat allotment and then put the land taken out of wheat into barley, the result will be a surplus of barley.

The same holds true of grain. The same holds true of grain.

So to disregard acreage allotments also is no solution to the problem. The farmer who does this is not fair to the others who cooperate.

If enough farmers disregard acreage problems, surpluses continue to pile up, land is wasted and price support efforts must eventually break down. That is why eligibility for price supports depends on seeding within the allotment, the chairman explains.

The only safe out, says the chairman, is to put diverted acres to work growing grass and legumes for seed and feed. Then the farmer is protecting his land and providing for a future income. Price supports for needed legume and grass seed and conservation payments for seeding

sorghums. Any significant shift of acreage to grain sorghum production could easily result in a flooded market, insufficient storage and a real surplus problem.

And to leave the land idle is no solution, says the chairman, for this creates new problems. Unprotected land is an erosion hazard both for wind and water. Erosion started on idle land may cut back into the rest of the farm. Not only is the income from this land cut off but the land itself becomes less valuable each year. Uncontrolled weeds go to seed and spread to other parts of the farm.

Land to grasses and legumes are not unexpected. Surviving in addition to the husband are two daughters, Mary Lee and Margaret Childs, both of Leland; five sons, Boyd L. and Charles Childs, both of Leland, Carl W. Gore, Leland, Clifton G. Gore and Clarence D. Gore, both of San Francisco, Calif.; one sister, Mrs. Lottie Sandlin, Wilmington; one brother, F. O. Williams, Leland; her mother, Mrs. Melesa Williams, Leland.

Leland Woman Passes Monday

Mrs. Minnie Childs Died Monday Following Long Period Of Illness

Mrs. Minnie Childs, wife of L. R. Childs of near Leland, died at her home early Monday morning. She had been in ill health for a long time and her death was

not unexpected. Surviving in addition to the husband are two daughters, Mary Lee and Margaret Childs, both of Leland; five sons, Boyd L. and Charles Childs, both of Leland, Carl W. Gore, Leland, Clifton G. Gore and Clarence D. Gore, both of San Francisco, Calif.; one sister, Mrs. Lottie Sandlin, Wilmington; one brother, F. O. Williams, Leland; her mother, Mrs. Melesa Williams, Leland.

Armistice Day Program Observed

A 30 minute observance of Armistice Day was held at the Shallotte school Friday, the exer-

cises being put on by the L. John E. Burns of Washington, D. C., commander of the unit of the National Guard, a short address and Harry Mintz, Jr., led in prayer. Ladies naives taking part in the exercises in addition to the were Dr. R. H. Holden, McRoy, Odell Williamson and ward H. Redwine.

It is estimated that the bluefishes in the north Atlantic destroy 10 billion other fish every day.

Shallotte THEATRE

Shalotte, N. C. First show begins each day at 7:30 o'clock. First Show day at 6:00. Late Show day at 9:15. Sunday Show at 8:30.

Wed., - Thurs., Nov. 16-17 "DOWN TO THE SEA IN SHIPS" Lionel Barrymore and R. Widmark

Fri., - Sat., Nov. 18-19 "HORSEMEN OF SIERRA" - Western -

Late Show Saturday and Sunday, Nov. 19-20 "CASABLANCA" I. Bergan and H. Bogart

Mon., - Tues., Nov. 21-22 "YOU'RE MY EVERYTHING" Dan Daily and Ann Blythe

Wed., - Thurs., Nov. 23-24 "SET UP" Robert Ryan and Audrey Totter

IN THESE 6 BOTTLES

Buy Pepsi 6-at-a-time... and save. Sparkling Pepsi tastes twice as good... goes twice as far... gives twice as much. You'll enjoy Pepsi—America's favorite cola in the big, Big 12 oz. bottle. Pick up 6 today!

WHY TAKE LESS—WHEN PEPSI'S BEST!

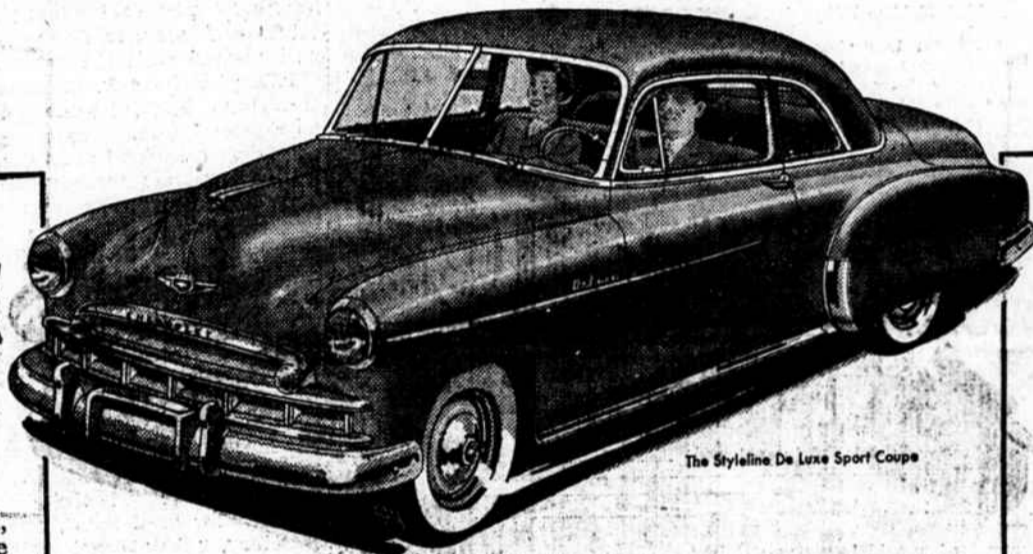
"Listen to 'Counter-Spy,' Tuesday and Thursday evenings, your ABC station"

Pepsi-Cola Bottling Co., of Wilmington, N. C.

CHRISTMAS STORE

We now have out our Christmas goods, and you will find a lot of help here with your problem of what to get for who—and how much to pay for your present.

R. GALLOWAY
General Merchandise
SUPPLY, N. C.



Longer, Heavier, with Wider Tread

the big car in the low-price field, with all the advantages of more riding-comfort, road-steadiness and safety.



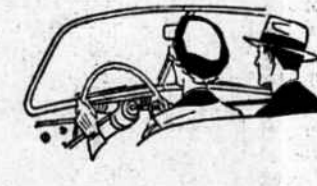
Center-Point Steering

with control centered between the front wheels for maximum driving-ease with minimum driver fatigue.



World's Champion Valve-in-Head Engine

the extra efficient power plant with the valve-in-head design that's setting the trend for the automotive industry.



Curved Windshield with Panoramic Visibility

supplying all that extra vision which means extra safety in driving with a fuller, freer view all about you.

Only one low-priced car brings you all these **EXTRA VALUES**



...and it's the **LOWEST PRICED LINE IN ITS FIELD!**

Extra Economical to Own and Operate and traditionally worth more when you trade; for Chevrolet is America's most wanted motor car—new or used!



with smooth, graceful curves, new interior richness and such extra luxuries as Push-Button Door Handles.



with steel welded to steel above, below and all around you for the highest degree of solidity, quietness and safety.



the widest rims in the low-price field—plus extra low-pressure tires—for greater stability and riding-comfort.



more outstanding than ever before with new Dual-Life Rotor- less brake linings that last up to twice as long.

WALL BOARD PLASTER BRICK PAINTED WALLS WALL-PAPER

this Wall-Fix **one coat** FLAT OIL PAINT covers this **in one coat!**

new, washable **PURE OIL FLAT WALL PAINT** ...not a water-thinned paint!

your choice of **8** beautiful new shades

ONE COAT COVERS practically any surface. That's because WALL-FIX is made with OIL—and nothing equals an oil base for hiding power.

SCRUBBLE! Any paint—even water paints—can be gone over with a damp cloth. But you can SCRUB WALL-FIX.

READY-MIXED! No messy mixing—WALL-FIX is ready-mixed for brush or applicator.

SELF-PRIMING! No priming coat or sealer necessary. WALL-FIX primes, seals and finishes in one operation.

LEAVES NO BRUSH MARKS! What's more, WALL-FIX leaves no overlaps. Even a beginner can do a perfect job.

DRIES QUICKLY! With WALL-FIX, you can paint a room in the morning and move back into it the same day.

Kirby's Hardware
Shalotte, N. C.

ELMORE MOTOR Co.
Bolivia, North Carolina