

# THE BEAUFORT NEWS

EVERY THURSDAY

Reading Is To The Mind What Exercise Is To The Body

BY W. G. MEBANE

VOL. IX

BEAUFORT, N. C. THURSDAY MAY 20 1920

NUMBER 20

## PAMLICO CONVENTION

### Republicans Have Big Time And Nominated County Ticket

A large and enthusiastic Republican convention was held at Bayboro in Pamlico county last week. The principal object of the meeting was to put a county ticket in the field. The county candidates were chosen and it was the opinion of many who attended the convention that it was a strong ticket and one that would sweep the field next November. The Republican nominee for Congress Richard L. Herring of Clinton was present and made a strong speech going into the issues of the campaign with a thoroughness that was convincing to his hearers.

C. R. Wheatley of Beaufort addressed the convention and greatly pleased the crowd with a red hot Republican speech. W. B. Rouse of New Bern also spoke on the League of Nations and closed with an announcement of his candidacy for the Republican nomination for Congress. W. G. Mebane spoke on the need of two political parties in the Southern States. A fine picnic dinner was served on the grounds and this added greatly to the pleasure of the occasion. A large number of ladies were present at the convention and seemed to be as much interested in it as the men. Those who attended from Carteret county were Judge K. J. Respass, C. R. Wheatley, W. G. Mebane of Beaufort, T. W. Nelson of Atlantic, and Samuel Lilly of Morehead City. J. S. Bass night a Republican war horse of Craven was on hand and was also W. H. Waters of Dover.

### Special Offer

For the sum of 75 cents we will send the Beaufort News to any new subscriber from now till January the first. The same rate will apply to any old subscriptions that run out this month or next. If you wish to take advantage of this offer act quickly.

### Potatoes Look Good

Owing to heavy rains in February and March, potatoes were planted a little later this year than last and in some instances the stand was rather poor. A larger acreage was put in though and this will probably offset the bad conditions. At present potatoes are looking good and the prospects seem favorable for a pretty large crop. There ought to be fifty thousand barrels shipped from this point this year. Digging will probably commence in about two weeks.

### Snowstorms Form in Warm Climates.

Potentially snow storms form in general region of warmth, strange as it may seem. The area of low barometric pressure, or storm sea, comes whirling eastward across the Gulf states and then generally takes a twist northward along the Atlantic seaboard. When sufficiently far north these warm air currents are chilled and the moisture becomes snow, very often being borne to the earth by the back draft of east wind.

### Nuts Not Properly Appreciated.

The reason why nut trees are not being planted more extensively in this country is similar to the reason why the automobile was not in use a comparatively few years ago. People had not thought much about it. The time is coming when nut trees will be as important a relation to our food supply as the automobile does to transportation.

## HOW MODEL PLANE MAY BE TESTED BEFORE ACTUAL FLIGHT IS MADE.

—Here are some bits of advice for model plane builders and flyers, written by H. C. Ellis, an expert on such things, for the *Everyday Engineering Magazine*:

To test the model, first wind its motor up about half the number of revolutions ordinarily used and then launch from the hand against the wind.

If the model exhibits a tendency to dive, it shows that it is head heavy; that is to say, there is not enough lift in front. This is easily corrected by sliding the main plane forward to increase the lift in front.

If, on the other hand, the model climbs too much, it shows that it is tail heavy. In which case just the reverse procedure is used—i. e., shifting the main plane back to increase the lift in the back.

If the model tips over sideways, either to the right or left, it is probably due to the torque or twisting tendency of the propeller or faulty alignment of the main planes, tail-plane or rudder, or, in the case of a double propeller machine, one propeller being wound up more than the other. This cannot be the fault if a double winder is used, as both propellers are turned the same number of revolutions.

To correct this tipping and swerving sideways it is only necessary to increase the angle of the main plane on the side that the model tips over, or swerves. This is done by bending the rear corner of the low wing down and bending the rear corner of the opposite wing upward a bit. This corresponds to warping the planes in a large machine. Adjust rudder to turn machine to the other side.

### LEAVES WATER TO TAKE PREY

How the Moray, Tropical Fish, Pursues the Crab Which It Is Seeking for Food.

University of Iowa scientists on a recent expedition to Barbados and Antigua in the tropical Atlantic found a fish which voluntarily left the water in pursuit of food, following its prey across rocky or sandy beaches.

This fish, the moray, has not the slightest fear of human beings. With bait tied to a piece of string members of the Iowa party led the moray on and on across the beach, all crowding about the fish to watch the experiment. The moray followed as far as a hundred feet or more from the water, wriggling across the rock and finally being permitted to capture the crab used as bait. Then the fish turned quickly and, by following the slope of the shore soon found its way back to the water.

It is a common sight where the moray are plentiful to find them chasing crabs and other food up the crevices in the rocks, leaving the water without the slightest fear. The moray is an extremely voracious fish with big mouth and long, pointed teeth, and when its jaw once closes on its victim the catch is sure.

### How "Antiques" Are Made.

In London and Manchester a small army of men are employed in making old furniture, supposed to have lain for centuries in ancestral halls. They will make a chest or settee certified to have been in use in Queen Elizabeth's spacious days, "genuine" Sheraton, Chippendale and Heppelwhite, and dainty pieces of Louis Quinze or Seize, all with irreproachable histories, and indistinguishable from the real antique furniture. America is very strong in these forgeries, and gayly produces on the spot furniture which looks as if it had been ancient when the Mayflower sailed.

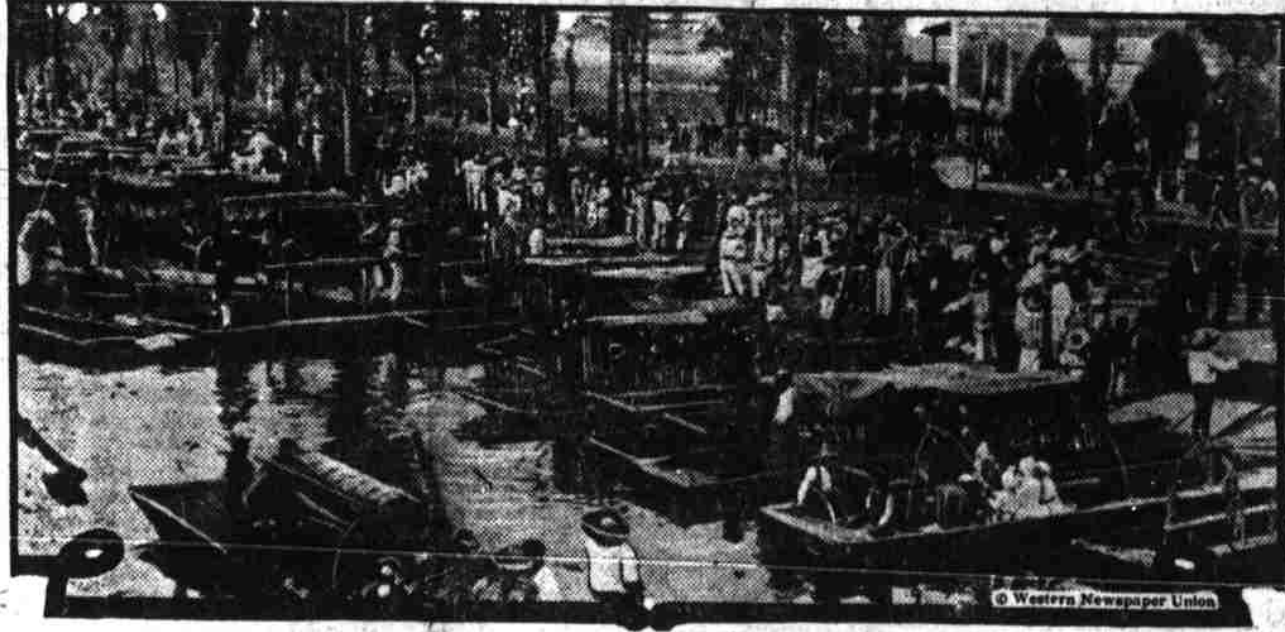
### How Earthquakes Radiate.

The curious manner in which earthquakes radiate from the central point of greatest disturbance until the shocks gradually lose their intensity is a phenomenon of much interest. Sometimes taking the form of a huge spider, or often spreading out in irregular directions the vibrations have been known to whisk their way through the earth's crust at the remarkable speed of two miles a second, so that the shocks seemed to take place in adjacent towns at the same moment.

### How France Is Rebuilding.

Villages in the vicinity of St. Quentin, France, are literally rising Phoenixlike from their own ashes. Confronted by a lack of stone and building materials, the artisans have established a big grinding machine in which the debris of the shell-shattered

## Not All the People of Mexico Are Fighting



A scene on the Viga canal, Mexico, on the day of Santa Anita. From ancient times the inhabitants have celebrated this gala day, decorating their punts in river parades, while beautiful costumes worn by everyone and roses are everywhere strewn.

## ROAD MEN ARE HERE

### Efforts Being Made To Straighten Out Road Matter

Two highway engineers were in the county yesterday taking a look at the roads of the county with the view of helping to straighten out the tangle which the county has gotten into about the matter of building the county's link in the Central Highway. They were W. L. Spoon representing the Federal Government and R. E. Snowden of the State Highway commission. They left New Bern yesterday morning in a car and inspected the roads both in Craven and Carteret counties.

The road men would not commit themselves as to what they thought ought to be done but did say that it was a bad plan for the people to get into a wrangle about where the road should be built as this would probably result in its not being built at all. They thought that it was very necessary for the development of this county that it should be connected with the rest of the State by one or more good roads.

From what was said the News man gathered the impression that the engineers think that to serve the best interests of the county it will be wise to build two roads, one terminating at Beaufort and the other at Morehead City. Such a plan would connect the county both east and west with the up State country and would be a tremendous factor in developing the whole county. It may be that the Federal Government will decide to aid both of these projects but, owing to the high cost of road building it is not likely that any work in the way of hard surface construction will be done for some time. Some other type of road may be started however at an early date.

### Marriage Licenses

At the office of the Register of Deeds licenses have been recently issued as follows: Wm. H. Quinn and Lula Garner of Newport. W. L. Wade of Williston and Pauline Pigott of Straits. Jno. D. Guthrie and Mattie Tatum of Beaufort. Thos. Lewis Morehead City and Angeline Willis of Straits.

### Japs Uniform in Size.

The striking uniformity of size among the Japanese is illustrated by the fact that measurements taken of an infantry regiment showed no variations in height of more than an inch or two in a regiment of 1,000 men.

## BIG PART OF TREE WASTED

### Why Turning the Forests of the Country into Lumber Involves Great Loss of Material.

How many of us realize the appalling wastefulness which is practiced in our inroads upon our timber lands? It is authoritatively declared that in turning the forest tree into lumber and then into the finished products, the original wood is subjected to greater losses than any other important raw material. R. G. Skerrett writes in the *Scientific American*. Remember, we cut down every year now fully 40,000,000 feet of timber, and the waste is such that only 320 feet of marketable lumber is obtained on an average from each 1,000 feet cut in the forest.

Take the long-leaf pine for example. Instead of sacrificing two-thirds of the tree, as is now done, that particular branch of the lumber industry could be made to furnish us daily from the discarded material quite 40,000 tons of paper, 3,000 tons of resin, 600,000 gallons of ethyl alcohol and 300,000 gallons of turpentine.

### Why Weeping Aids Eyes.

Tears are provided for washing the ball of your eyes. Every time you wink a little tear is released from under the eyelid, and the wink spreads it all over the eyeball. This washes down the front of the eyeball and cleanses it of all dust and other things that fly at the eye from the air. Then the tear runs along a little channel, much like a trough, at the lower part of the eye, and out through a little hole in the eye, and in this case the tear is really only an eyewash. Many things, but more often sadness or injured feelings, start the tears coming so fast from under the eyelid that the little trough at the bottom and the hole in the corner of the eye are too small to hold them or carry them off so they roll over the edge of the lower eyelid and down the face. Among other things that will stimulate tear glands and cause an oversupply of eyewash to come down are onions. What they give off is very trying to the eyes and so, just as soon as the something which an onion throws off hits the eyeball the nerves of the eye telegraph the brain to turn on the tears quickly, and they come in a little deluge and counteract the bad effect of the onion.

### Why Leisure is Important.

The fellow who takes time to get a grip on life is the fellow who will get ahead. To do this he must be master of his spare time. The hours of leisure are the hours that make or break a man. In them he forms habits of thrift or prodigality. Time well used makes a brain well stored. This becomes the ready asset of needy hours and the unexpected. He meets exceptional situations with confidence, and men learn to trust him in times of stress. And he learns to believe in his own strength. It is no wonder that a little detour in life's journey has made such beautiful going in life's afternoon.

### Named From Saint's Day.

On the tenth of April, 1534, Jacques Cartier sailed from France with two small ships and 122 men to found a colony in North America. In May he arrived in Newfoundland. Cartier entered the Newfoundland waters in the feast day of St. Lawrence, and called the Gulf St. Lawrence in honor of the patron saint of that day.

### Why Living Cost Increased.

One of the explanations of the high cost of living in the Philippines, as given by a complaining native, is that the tribesmen who were formerly content with their own products are now being forced to buy goods from the outside world.

## Attend Shriners' Meeting

Quite a large party left here for Goldsboro yesterday afternoon to attend the meeting of the Shriners which is in progress there today. A special pullman car had been provided for the party and most of them expected to use it for sleeping quarters while in Goldsboro as the hotels there are unable to care for the big crowd. Those who went from here were Mr. and Mrs. W. A. Mace, Mr. and Mrs. C. H. Bushall, and Miss Sallie Bushall, I. E. Ramsey, C. R. Wheatly, J. H. Dill, Deacon C. D. Jones, Levi Wheatly, Otis Moore, Mrs. Feidt, Misses Lottie Longest, Dorothy Jones, Mr. and Mrs. T. G. Willis, and Frank Small of Sea Level.

## Mrs. Willis Entertains

Mrs. E. M. Willis delightfully entertained a few friends Wednesday night at her home in honor of Miss Elva-Lee Willis. The home was artistically decorated with red and white roses for the occasion under the colored lights presented a scene of loveliness.

Music was rendered and many games were played, but Rook mostly held the attention of the happy band. At nine thirty refreshments of ice cream and cake were served.

Those present were: Messrs. Luke Hill, James Owens, William Darling and Edwin Tillet Misses Mattie-Mae and Ruth Garner, Daisy Morris and Elva-Lee Willis. At eleven o'clock all left for their homes expressing delight in the manner in which they had been entertained.

## Governor Glenn Dies

Ex-Governor B. B. Glenn of this State died suddenly last Saturday night in a hotel at Winnipeg Canada where he had gone on business connected with the Boundary Commission of which he was a member. Governor Glenn had a severe illness last year and he had probably never fully recovered from this although he had gotten so that he could travel about. His body was sent back to Winston-Salem for burial. He is survived by his widow one son and one daughter.

## BLOCKADE STILL RAIDED.

### Two Large Booze Outfits Captured By Officers.

Revenue officers and Sheriff Thomas paid their respects to the moonshine distillers in this section this week and as a result a considerable scare has been thrown into the booze makers. On Monday a force of raiders from Raleigh composed of J. A. Hutchins, J. W. Montague, J. H. Ramsey, J. M. Long accompanied by Sheriff Thomas went out into the Adams Creek section where the activities of a moonshiner had been going on for quite a while according to reports and made a capture of a 150 gallon copper still and some twenty gallons of whiskey. They did not get the owner of the still but they have evidence against a man and will make an arrest later on.

On Tuesday the officers sallied forth again and this time they got another 150 gallon still. The owner was evidently a rum maker as four barrels of molasses was found there which the officers destroyed.

The last still was found about thirteen miles from Beaufort just over the Craven county line. No one was found about the still and it is thought that the owner had found out in some way that the officers were coming and so kept out of the way.

According to reports there are a number of moonshiners operating in this county and Craven county. They locate their stills in out the way places and are constantly moving them about so that it is very difficult they make up quantities of liquor which are carried to Beaufort or New Bern or elsewhere and sold to retailers who peddle it out. Occasionally they are caught and then they go to Atlanta for a vacation. The captured stills were brought to Beaufort and are in the custody of the sheriff.

## Daughters Of Confederacy Organize

A chapter of the United Daughters of Confederate Veterans was organized in Beaufort last Thursday afternoon. A committee of ladies composed of Mrs. Felix Harvey of Kinston, Mrs. Annie Hughs of Pollockville, Mrs. C. S. Wallace and D. G. Bell of Morehead City came here and met with those who were interested in the matter and effected an organization. The chapter started off with about twenty members and will probably soon increase its membership considerably. The following officers were elected: President Mrs. C. A. Clawson Vice-president Mrs. C. L. Carrow Recording Secretary Mrs. G. D. Potter Corresponding Secretary Mrs. E. W. Hill Treasurer Mrs. H. L. Potter, Historian Miss Annie Rumley.

The first regular meeting of the chapter was held yesterday afternoon at which a fairly good attendance was present. A called meeting is to be held on Wednesday June the 22nd, at 4 o'clock at the Republican Club.

## Woman's Suffrage Meeting

A woman's Suffrage Ratification meeting is to be held in the county court house here next Tuesday evening at eight o'clock. Speeches will be made by several citizens of Beaufort but the principal address will be by Miss Lola C. Trax of Baltimore. A large crowd is expected to be present.

Beaufort, N. C., May 20, 1920. The Beaufort News is published every Thursday except on legal holidays. Subscription price, \$1.00 per annum in advance. Single copies, 10 cents. Entered as second class matter, May 10, 1917. Post Office at Beaufort, N. C., authorized to mail this publication at special rate of postage provided for in Act of October 3, 1917. Accepted for mailing at special rate of postage provided for in Act of October 3, 1917. Postmaster: J. H. Dill.