

R. L. MARKHAM, Pres. W. M. COMBS, Vice-Pres. W. H. McCLAMERY, Sec. and Treas.

# FORD GARAGE CO.

"Agents for Famous Ford Automobile Alamance and Guilford Counties."

115 West Market Street

Greensboro, N. C.

We are now ready to show you the new Ford Car for 1912. We now have on display at our Garage located at 115 West Market St., Greensboro, N. C. a complete stock of the very latest Ford's embracing the Fore-door Touring, and all the latest Ford Cars. The Ford Garage Co. is splendidly equipped, conduct a successful Automobile business having in its employ mechanics direct from the Factory. Men who have served the trade in the mechanical Dept. of the Ford Factories, and all Ford cars will have the best attention at the hands of these experts. When you buy a Ford Car, you can now be assured that you have a shop at your disposal to care for your machine. The new cars are now on display, come to see them and judge their merits.

If interested a postal card addressed to us will bring you catalogue containing full information.

## Lower Than Ever in Price

There have been no mistakes to correct--no experiments to try out--but conveniences have been added and a marked reduction in price made possible through larger production and added factory facilities.

Some of the original and exclusive features which have made FORD Model T the most popular and serviceable car in the world:

Marvelous Simplicity in Design--Few parts, but every part in harmony with scientific principle. There is nothing superfluous in Ford design, every part has its specific place, making a chassis compact, clean cut, neat, with great strength.

A Car of Vanadium Steel (scientifically heat-treated), the strongest of all steels, under tensile stress and against vibration and shock.

Ford Magneto built into the motor. No wearing surfaces, no moving wires, no ignition troubles.

Ford Planetary Transmission. Motor always connected with car. Transmission always in gear; when the car is running on high speed the gears are quiet. No crunching or stripping of gears.

No Weight on Moving parts. This assures durability, economy and long service.

Ford Spring Suspension. The axles are attached to the car at the extreme point of the springs, thus giving the utmost flexibility, smoothness in riding, and least wear on tires.

Ford Rear Axle. No truss rods. Look at it, no weight but its own to carry; think of the saving in wear this means to the rear tires.

Simplicity in Operation. The movement of the car may be controlled by the feet, the hands need never be taken from the steering wheel.

Light Weight. Ford Model T is the lightest in weight of any four cylinder car in the world, size, power and capacity considered. It has 60 pounds to the horsepower. It costs money to move weight. If weight is an advantage in a motor car, why don't the makers of heavy weight cars advertise the fact?

Accessibility. Every part of the mechanism of Ford Model T is easily accessible. There is nothing intricate--nothing confusing. It is as simple as A B C.

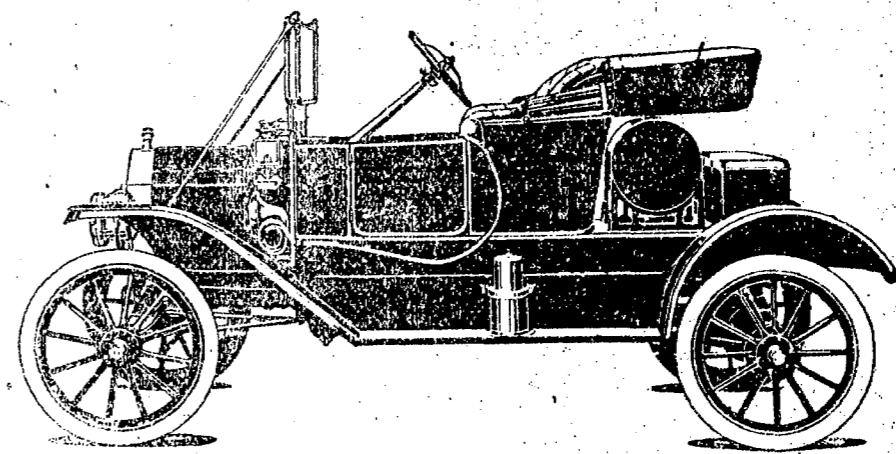
Cheapest to Maintain. Ford Model T is an exceedingly economical car to keep. It goes from 20 to 28 miles on one gallon of gasoline. It is equally economical with oil, and gives from 5,000 to 8,000 miles on one set of tires.

Ford Service for Ford Owners is a feature which must not be forgotten. No matter where you are, with your Ford car, if accident or trouble occurs, you are sure to find immediate service right at hand. Over four thousand individual dealers, each one carrying a supply of Ford parts in stock all the time, each one anxious and prompt to assist Ford owners. Ford service for Ford owners is an exclusive advantage. It is a worldwide advantage. No matter where you go, the Ford dealer is there waiting for you.

No Ford Cars Are Sold Unequipped. When you buy a Model T you get a whole car.

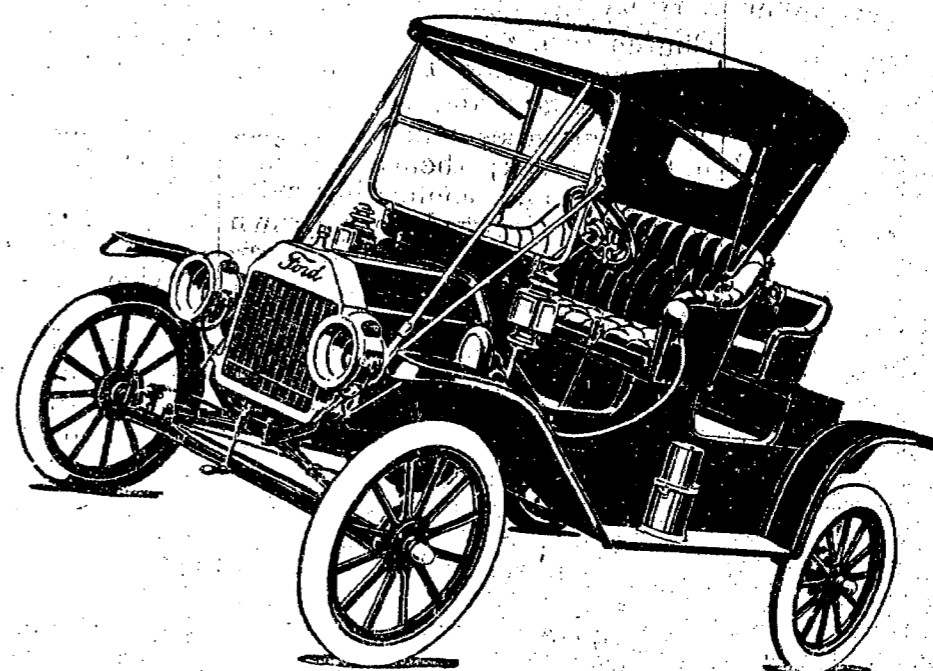
We would like to have you write for our series of books, illustrated and fully descriptive of the various features of Ford Model T cars. Send for the series. It won't cost you anything.

**Business men are solving the problem of delivering all kinds of merchandise with the Ford Model T delivery Car--It is proving the Quickest and Most Economical for all general purposes.**



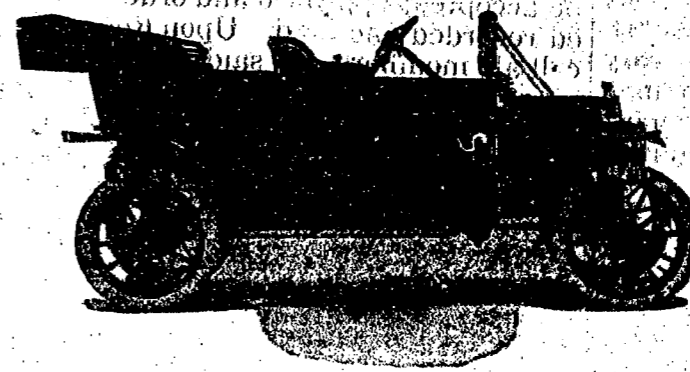
\$590--FORD Model T Touring

4 Cylinders, 2 Passengers  
Completely equipped as follows:  
Extension top. Speedometer  
Automatic Brass Windshield  
Two 6 inch Gas Lamps. Generator  
Three Oil Lamps  
Horn and Tools  
Ford Magneto built into the motor  
This car thus fully equipped for \$590, F. O. B. Detroit.



\$590--FORD Model T Commercial Roadster

4 Cylinders, 3 Passengers  
Removable Rumble Seat  
Extension Top. Speedometer  
Automatic Brass Windshield  
Two 6-inch Gas Lamps. Generator  
Three Oil Lamps  
Horn and Tools  
Ford Magneto built into the motor  
This snappy Commercial Roadster thoroughly equipped as above for \$590, F. O. B. Detroit.



\$690--FORD Model T Touring Car

4 Cylinders, 5 Passengers  
Completely equipped as follows:  
Extension Top. Speedometer  
Automatic Brass Windshield  
Two 6-inch Gas Lamps. Generator  
Three Oil Lamps  
Horn and Tools  
Ford Magneto built into the motor  
This splendid Touring Car for 690, F. O. B. Detroit.

\$700--FORD Model T Delivery Car

4 Cylinders. The regular Vanadium Steel constructed chassis which has made the FORD Model T world famous; steel body, giving roomy interior. Capacity 750 pounds of merchandise, complete equipment as follows:  
Automatic Brass Windshield. Speedometer  
Two 6-inch Gas Lamps. Generator  
Three Oil Lamps  
Horn and Tools  
Ford Magneto built into the motor  
And the car complete as above, costs only \$700, F. O. B. Detroit.

**Write For Catalogue today.**

OU  
through  
give you  
ate secur-  
guaran-  
principal  
rest, pay-

rust Co.  
50,000

C. V. Sellers  
Clas D. Johnson  
W. W. Brown

N. C.

and are in a po-  
ll kinds, prompt-

MPANY  
streets

N. C.

**JOB?**

business men seeking you  
and show ambition to rise  
than indorse all other bus-  
International reputation  
Metric, Letter Writing, Business  
under reasonable conditions.  
dy. Thousands of bank call-  
ers, and stenographers  
of positions as the resu-  
ughon's Home Study.  
GUE. For prices on lesson-  
write Jno. F. DRAUGHON,  
Nashville, Tenn. For free cat-  
course AT COLLEGE write  
SINESS COLLEGE  
or Nashville, Tenn.

ERANS REUNION

h; 1912.  
fares.

RAILWAY

Southern Railway will  
ACON GA., and return

ROUND TRIP  
na \$ 8.75  
ord 9.15  
igh 8.50  
ham 8.00

other stations.  
h, 7th and 8th, with  
u prefer to stay longer,  
g a fee of fifty cents you  
June 5th, 1912.

mitted on these tickets.  
o any Southern Railway

gh, N. C.

e Base Ball.

School Vs-- Graham Graded

Bingham.  
Atlantic Christ-

School Vs-- Graham Graded

Whitsett.  
Oak Ridge.  
Davidson.  
Lenoir.  
Wake Forest.