

COME TO THE ALAMANCE FAIR

OCTOBER,

7-8-9-10,

OCTOBER,

The Greatest Event Pulled off in the County During
The Year. Greater Attractions than Ever Before.

EXHIBITS UNSURPASSED.

Come spend a day of pleasure and be greatly benefitted by view-
ing the Great Attractions.

Come Bring Your Exhibit and See What Your Neighbor Is Doing

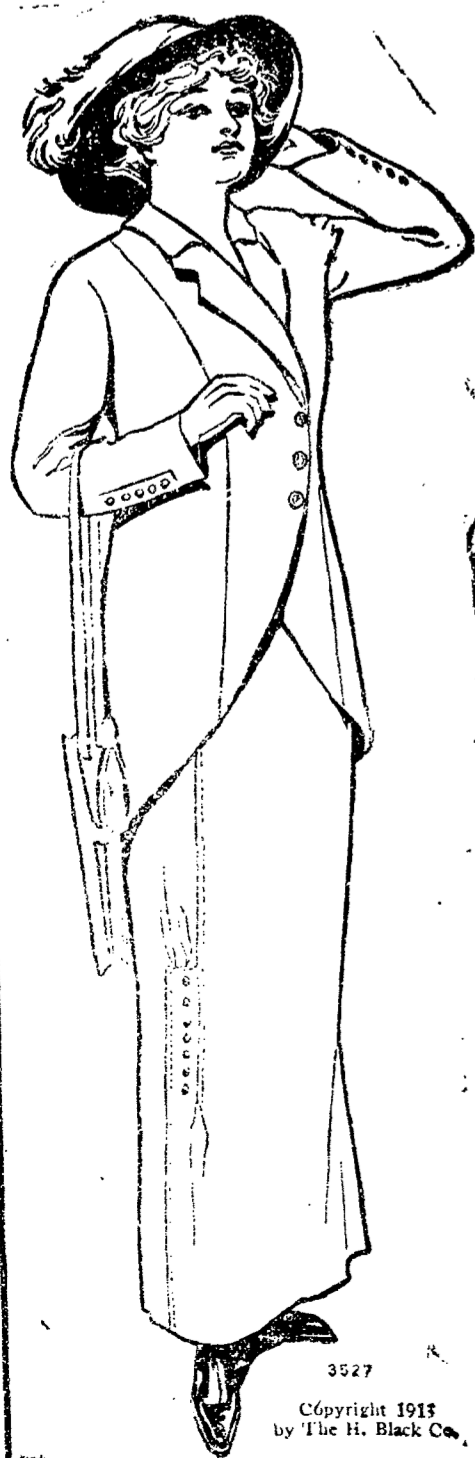
Alamance Fair Association,

R. A. FREEMAN, Sec.

AGAIN NEW COAT & SUIT TIME

---IS HERE---

Why not Purchase Early this time Why Not get the
Pick of the First Showing.



Our showing for this season
surpasses all our previous
efforts in quantity and designs
that combine originality with
tasteful simplicity and is
worthy of your thoughtful in-
spection. You will see here an
exhibit which includes all the
latest models and all the newest
fabrics. The prices are really
lower than you would
expect.

Ladies and Misses Suits \$10.00 to \$35.00
Ladies Coats \$3.50 to \$25.00
Misses Coats \$3.00 to \$15.00
Childrens Coats \$1.50 to \$8.50

B. A. SELLARS & SON

Burlington, N. C.

Automatic Electric Rock System.

Washington, D. C.,--The Southern Railway Company is now installing an automatic electric block signal system on the main line between Seminary, Va., a distance of 80 miles, all double track. This system will be similar to the type which has given splendid results on the double track stretches between Demm, N. C., and Charlotte, N. C., and between Monroe Va., through Lynchburg to Montview Va., and when completed will provide continuous automatic signal protection for trains from Orange into Washington Terminal Station, giving in all a total of 198 miles of double track protected by this system on important stretches of the Washington-Atlanta main line.

106 automatic signals will be erected at intervals of about two miles, each interval constituting a "block," and the system will include 13 interlocking plants controlling switches.

and for lighting all stations, switch and signal lights between Seminary and Orange, will be supplied, by high tension 4,400 volt, 3 phase transmission line, from a sub-station to be built near Alexandria, using power from the Alexandria County Light and Power Company's plant. To provide for an emergency supply, a power plant will be built at Orange equipped with a gasoline engine and an alternating generator of sufficient capacity to operate the entire system.

The signals will be the usual three position upper quadrant type, using red green, and white lights at night for the "stop," "caution," and "proceed" indications. The interlocking plants controlling switches will be equipped with power signals and electric lights in the towers and on the signals. Annunciators will be provided to announce the approach of trains in both directions at each of these towers. This protective system reerects the latest product of engineering science the safety of train operation in this territory.

To Cure a Cold in One Day
Take LAXATIVE BROMO Quinine. It stops the
Cough and Headache and works off the Cold.
Druggists refund money if it fails to cure.
E. W. GROVE'S signature on each box. 26c.

IF ITS

Flower Bulbs, Cold Drinks, Cigars,
Toilet Articles, Drug Sundries
You Want

We Have 'Em and Can Get More.

Mr. C. C. Seawell is with us and will see to it
that your PRESCRIPTIONS and Drug orders
are carefully and promptly taken care of.

Yours to serve,

Burlington Drug Co.

Agents for Summit Avenue Green House Cut Flowers.

PHONE 244J.

It Always Helps

says Mrs. Sylvania Woods, of Clifton Mills, Ky., in
writing of her experience with Cardui, the woman's
tonic. She says further: "Before I began to use
Cardui, my back and head would hurt so bad, I
thought the pain would kill me. I was hardly able
to do any of my housework. After taking three bottles
of Cardui, I began to feel like a new woman. I soon
gained 35 pounds, and now, I do all my housework,
as well as run a big water mill.

I wish every suffering woman would give

CARDUI

The Woman's Tonic

a trial. I still use Cardui when I feel a little bad,
and it always does me good."

Headache, backache, side ache, nervousness,
tired, worn-out feelings, etc., are sure signs of woman-
ly trouble. Signs that you need Cardui, the woman's
tonic. You cannot make a mistake in trying Cardui
for your trouble. It has been helping weak, ailing
women for more than fifty years.

Get a Bottle Today!