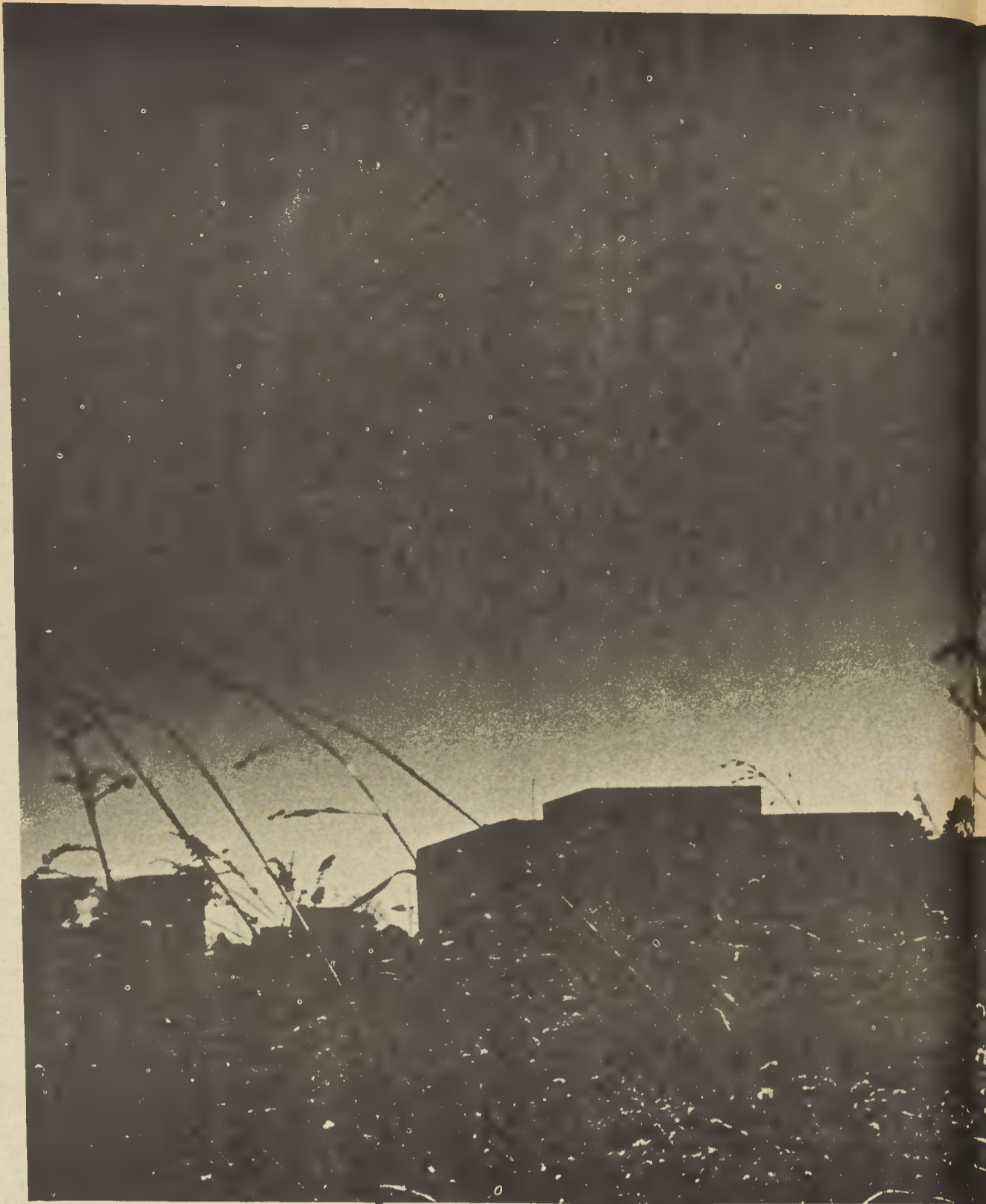


A university, especially a young university, is likely to measure its growth in terms of physical facilities. This is true at UNC-C. The students, faculty, and administration are important, but the buildings are the visible signs of growth and progress.

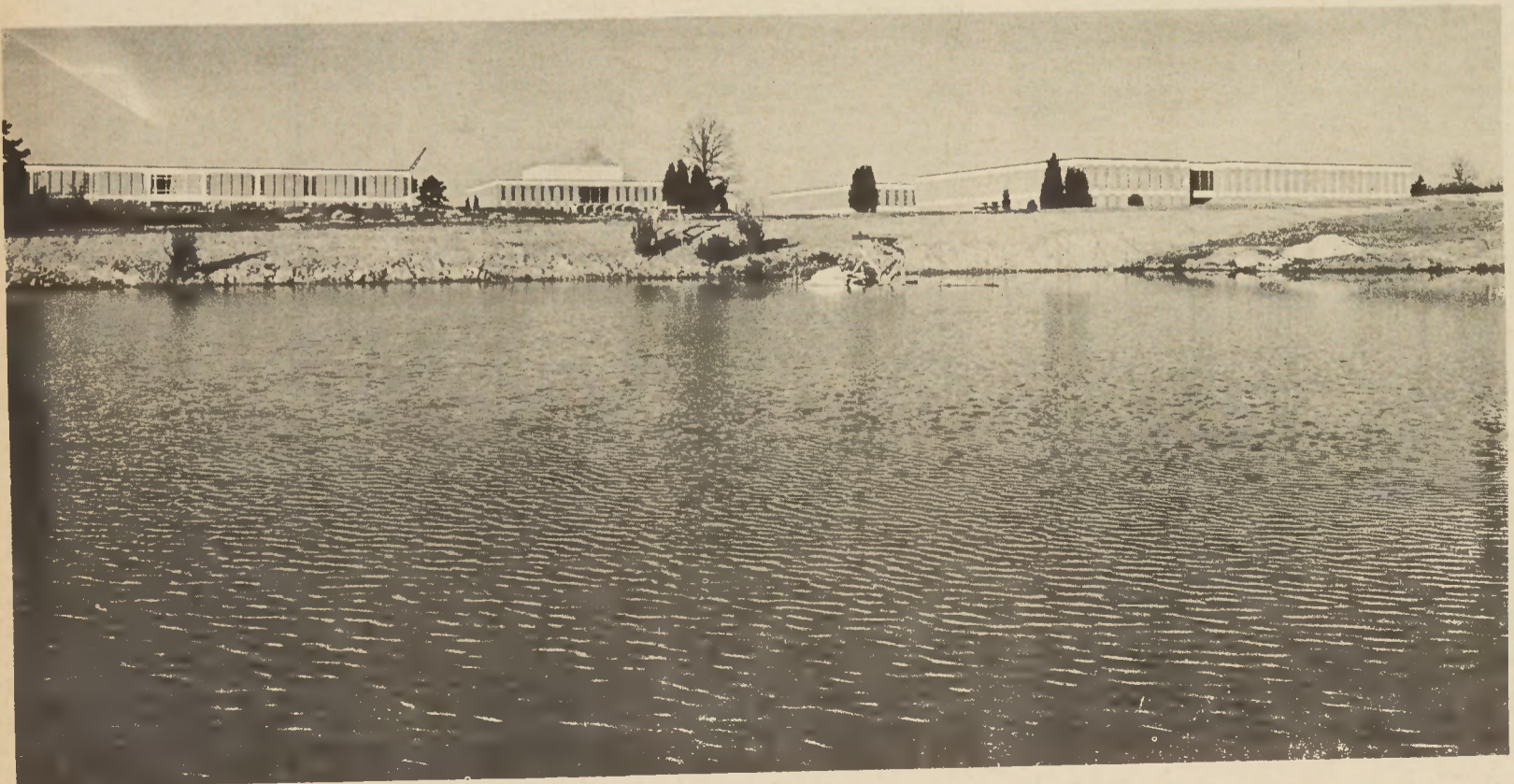
Here are a few unusual (we hope) views of the UNC-C campus as seen by Photographer Tommy Estridge.



Part of the Liberal Arts building is framed by arches of the tulips on the Kennedy Building.



Out Of The Weeds And Mud Of North Carolina Farms



With the parking problem as it is, few students drive by the lake and fewer still have seen this view of the campus which will be commonplace when the new entranceway is completed.