

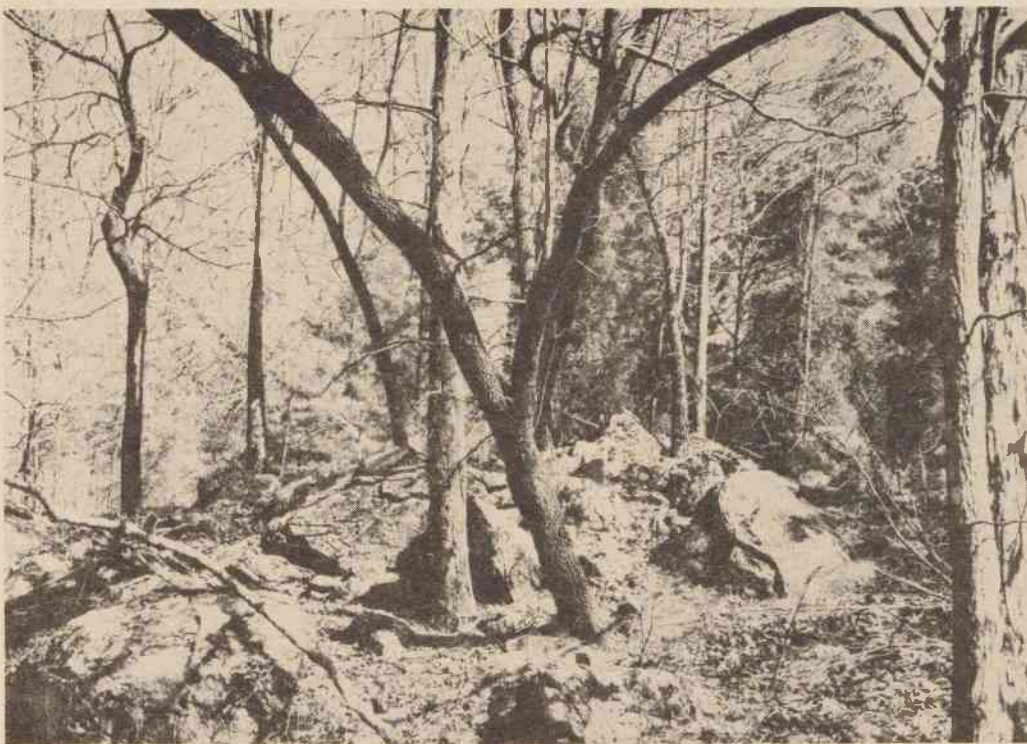
The Charlotte Collegian

Official Charlotte College Student Publication

VOLUME 17, NUMBER 5

CHARLOTTE, NORTH CAROLINA

FEBRUARY, 1963



A WOODED KNOLL in the new arboretum, where plants will be trans-set from the bog scene in the Southeastern Flower and Garden Show, at Charlotte Merchandise Mart, February 15-19. Dominating a prominent corner of the show will be a wild garden, designed by Dr. Herbert Hechenbleikner. Over the ridge and down the hollow will be the pond filled with bog plants.

Garden Show Previews College Arboretum

"Prelude to Spring" is the theme of the Southeastern Flower and Garden Show, at Charlotte Merchandise Mart, February 15-19. Dominating a prominent corner of the show will be a wild garden, designed by Dr. Herbert Hechenbleikner.

The main theme of this garden is a bog scene, featuring five native insectivorous plants -- Venus flytrap, pitcher plant, butterwort, bladderwort, and sundew. Most of the wild plants and flowers making up the bog scene will be rooted, and after the show they will be set in the new arboretum at Charlotte College.

All week Dr. Hechenbleikner and two student assistants, Ralph Strange and Sam Lindeman, have been putting their spare hours into constructing the garden scene in a corner area twenty feet square on the first floor of the Merchandise Mart.

For a background pine slabs draped with Spanish moss created the effect of a secluded spot. Borders were heightened as long leaf pine, white cedar, and four native species of holly were set in.

The ground sloped gently toward a marshy pond, which began with a tank of galvanized

sheet metal, measuring six inches deep and curving in an irregular shape for eight or ten feet in length. Before show time, however, white sand and dead leaves covered the bottom of the "pond," and wild ferns leaned over the edges into the black "swamp water." At another spot a cyprus knee thrust up, and duckweed floated in patches on the surface.

Near the pond a bare patch of white sand and a rotting pine stump add their illusion of a natural scene. Yellow jessamine in bloom lends color to another spot. Visitors in the crowd discover mistletoe growing on a branch, but few can identify the living peat moss. Many other varieties of native plants fill in nooks and crannies of the Charlotte College wild garden exhibit.

Chorus Planning Spring Concert

The Charlotte College Chorus is rehearsing new music for an outdoor concert for the student body in April, also for a television show in May.

During the first semester the chorus concentrated on sacred music, for most of its appearances were in churches. For the spring show, however, Mr. Harvey Woodruff, Director, stated that a bright sprinkling of light music has been added.

Weekly rehearsals are held in two sections to accommodate the schedules of working members. The first section meets in L-107, Fridays, 2:30-4:00 P.M., and the other group rehearses at Caldwell Memorial Presbyterian Church from 2:00 to 3:30 on Sunday afternoons.

An accompanist is needed for the Friday afternoon rehearsals. Mr. Woodruff will welcome any musician who can assist at the piano.

Mr. Woodruff will welcome also any more students who like music and want to sing with the chorus. Given new members with cheerful attitudes and the desire to sing, Mr. Woodruff assumes responsibility to teach them the

Faculty Wives Club Formed

A constant increase of faculty members is one of the results of the rapid growth of Charlotte College. Because faculty residences are scattered over Charlotte and Davidson, the faculty wives decided they needed a focal point where they might learn more about the school and each other. So they have formed a Faculty Wives Club.

The major purpose of the group will be to welcome newcomers to the college and to Charlotte and to make them feel completely at home. These women also hope to become better acquainted with each other and to learn about each other's families, hobbies, interests, and eccentricities.

Wishing to have a friendly, relaxed, and informal atmosphere, the group decided against having any conventional programmed organization or any (Continued On Page Three)

Senior College Grows

Task Force Studies Future Fourth Campus

The continuing possibility of a fourth university campus at Charlotte was highlighted by President Bonnie E. Cone in an address last week before the Charlotte Woman's Club.

"We are encouraged by the recommendations of the Pearsall report," Dr. Cone stated, "and by the fact that the Board of Trustees of the University accepted it unanimously and agreed, as soon as legislative authorization is provided, to undertake a comprehensive study of the need for the establishment of new units of the University. So the door is not closed on our own Board's request for a fourth campus of the University."

The Board of Trustees of the University, she explained, is seeking new legislation in the General Assembly, granting the Board sole authority to determine the locations of future campuses of the University. With the passage of such legislation, a special task force will be sent to inspect this area and see if Charlotte really needs and can support university and graduate facilities.

After a task force recommends expansion of university facilities and services into an area, it becomes "the legal responsibility of the Board to set them up." Some delay will be unavoidable, but positive action is expected.

While this action is pending, Charlotte College will move forward on its own, as an independent state-supported college, through a two-stage development into a senior college. The junior year will be added to the curriculum this fall, and the senior year will be added in the fall of 1964.

The General Assembly is expected to give final approval to this expansion program and provide adequate appropriations. Charlotte College is requesting 3 1/2 million dollars in capital funds and 2-million dollars for operating expenses.

The expanded operating budget

will finance additional courses in liberal arts, sciences, business administration, engineering, and teacher education. The curriculum expansion is almost complete, and administrative efforts are being directed toward employing additional faculty.

For the larger faculty and student body, more classroom and laboratory space will be needed. So the third phase of the building program will include two new classroom buildings and two new laboratory buildings.

The present Liberal Arts Building will have a twin structure to the south, and there will be another classroom building to the east, forming the apex of a triangle with the other two, but standing just inside the present driveway.

The two new laboratory buildings will be located to the north of the Kennedy Building, forming the base of another triangle.

Across the campus and on the other side of the barn will be the site of the new administration building. Plans are not yet definite about including this structure in the same building phase with the other four buildings.

Valentine

Dance Is Set

The first dance of the spring semester, Valentine's Dance, has been scheduled by the Student Council for Saturday night, February 23.

The dance floor of the Queen Charlotte Hotel has been reserved from eight-to-twelve, and the occasion will be semi-formal.

The highlight of the dance will be the appearance of the Valentine's Court, headed by the Sweetheart of the dance.

The Social Committee has engaged Bill McIntire's Band for hours of swinging tempo. Free tickets to the dance will be made available by the office at a time to be announced.

Jefferson Standard Donates Telescope

Through the generosity of the Jefferson Standard Foundation, Charlotte College will soon have its own telescope mounted and pointed to the stars. The gift was communicated last week to President Bonnie E. Cone in a letter from Mr. Charles N. Crutchfield, Executive Vice-President of the Jefferson Standard Broadcasting Company.

The college already has a perfect location for its new telescope -- atop the old silo that came with the farm purchased for the campus. The silo measures about eighteen feet in diameter and rises to a height of approximately forty feet. Being situated on the campus knoll, it will have a clear sweep of the sky.

There is a steel ladder anchored in the outside wall of the silo, and the construction of a railed platform on top will complete the basic observation point. A fixed pedestal for mounting the instrument would be in-

cluded, but the telescope itself will be carried back and forth.

Dr. Herbert Hechenbleikner recommends a four-inch telescope for the purpose of the college, and he indicated that a simple platform on top of the silo would accommodate eight or ten observers comfortably and still give free sweep for the telescope. An open platform is more desirable than an aluminum dome, which can get very hot and stuffy unless air conditioned.

An interior staircase of spiral steel construction would be a desirable convenience for the sidereal silo, and Dr. Hechenbleikner believes one can be purchased reasonably from some old cotton mill. Such staircase are common features in multi-story mills, particularly where they rise near the boiler rooms.

Any information leading to a cotton mill that can spare a spiral steel staircase will be indeed appreciated by the college.

Thank You Pays \$1,000

Nobody is sure what picture is supposed to be worth a thousand words, but here is proof that a thank-you letter from a Charlotte College student was worth a gift of \$1,000 to the Scholarship Fund.

When the Corporate Insurers Service, Incorporated, repeated its gift to the college this year, Mr. W. C. Wolf, Jr., president of the corporation, mailed a check for \$1,000 to President Bonnie E. Cone. At the end of his letter Mr. Wolf commented as follows:

"You may be interested to know that I received a rewarding letter from one of the students participating in last year's scholarships. In fact, the nature of the letter was such that it stimulated us to provide the monies again this year for the same purpose."



MR. WOODRUFF

music.

Final appearance of the chorus will be its usual prominent role in the graduation ceremonies in June.

Contest Open To Students

The Writers Club of Hickory, North Carolina, has extended its normal boundaries to open its spring contest to students at Charlotte College.

Cash prizes of \$10 and \$5 go (Continued On Page Four)