

COMMISSIONER'S SALE.

By virtue of an order of the Superior Court of Cabarrus County made in the special proceeding entitled "Emma Winecoff, Plaintiff, vs. Ed. A. Winecoff et al., Defendants," the undersigned commissioner, will on Saturday, the 2nd day of July, 1927, at 12 o'clock M., at the court house door in Concord, N. C., offer for sale to the highest bidder, for cash, that certain tract of land lying and being in No. 4 Township, Cabarrus County, North Carolina, and described as follows.

Lot No. 3 in the division of the lands of Mike Goodnight and conveyed to W. F. Winecoff by Aaron Yost, guardian of the minor heirs of Abraham Goodnight on the 21st of December, 1874, and registered in Record of Deeds No. 40, page 101: Beginning at a pine knot on said side of the road, corner of lot No. 2, and runs S. 32 E. 58 poles to a pine stump; thence S. 19 E. 42 poles to a stake, a corner of lot No. 4; thence with lot No. 4 S. 76 poles to a stone; thence S. 17 E.

18 poles to a stone; thence N. 77 E. 29 poles to a stone on S. 33 Goodnight's line; thence S. 19 E. 19 poles to a stone, formerly a hickory, David Winecoff's corner; thence with his line West 74 poles to a W. O.; thence North 32 poles to two oaks; thence N. 35 E. 29 poles to a stone; thence North 17 poles to a stone crossing the swamp; thence leaving Winecoff's line and running with the line of lot No. 2, N. 25 W. 144 poles to a stone back of milk house; thence S. 73 West passing through the center of the spring 16 poles to a stone near Patsy Goodnight's house; thence N. 20 W. passing near Goodnight's house 10 poles to a stone on the side of the road; thence N. 61 E. 17 poles to a willow; thence N. 87 E. 16 poles to an elm; thence N. 48 E. 42 1-2 poles to the beginning, containing 45 acres, less 2 3-4 acre sold off to D. P. Winecoff on December 29th, 1909, and recorded in Record of Deeds No. 81,

page 254. The bid will start at \$761.25. This the 15th day of June, 1927. L. T. HARTSELL, JR., Commissioner. By Hartsell & Hartsell, Attys. 23 & 27.

RE-SALE OF LAND UNDER MORTGAGE.

Under and by virtue of the power and authority conferred upon me by a certain mortgage trust deed executed on the 25th day of May, 1925, by P. D. Sides and wife, Anna Sides, and duly recorded in the Register's office for Cabarrus County in Book of Mortgages No. 49, page 220, and default having been made in the payment of the bonds secured by said deed of trust, I will offer for re-sale to the highest bidder for cash at the court house door in Concord on Tuesday, the 5th day of July, 1927, at

12 o'clock M., the following described real estate, to-wit:

Lying and being in the Northeastern corner of Cabarrus County on both sides of the highway and both sides of the Yadkin Railroad leading from Salisbury to Albemarle, and bounded as follows:

Tract No. 1. Beginning at a stone on the North side of the Albemarle road and runs N. 20 degrees East 40 poles to the road side; thence S. 88 degrees East 2 poles to the center of the railroad track; thence down the railroad S. 41 degrees East 47 poles to the old line; thence with the old line S. 31 1-2 poles to a stake; thence E. 23 poles to a stone; thence S. 46 degrees N. 21 1-4 poles to the Albemarle road; thence up said road N. 47 degrees W. 71 poles to the beginning, containing 11 1-2 acres more or less.

Tract No. 2. Beginning on a stump in the right of way of the Yadkin R. R. and runs East 30 poles to a stake on an old corner by two white oaks and two post oaks; thence N. 5 degrees E. 23 poles to the public road; thence with the said road as it measures 44 poles to a stump; thence S. 23 degrees W. 24 poles to a stone; thence with the R. R. right of way S. 55 degrees E. 26 poles to the beginning, containing 7 acres, more or less.

Tract No. 3. Beginning in the S. side of the road and runs with the road W. 73 1-2 poles to the old line; thence with the old line S. 2 2-2 degrees W. crossing the R. R. 90 2-3 poles to a stage Rufus Troutman's corner; thence S. 88 degrees E. recrossing the R. R. 70 poles to a pine knot in Troutman's line; thence N. 2 1-2 degrees E. 66 poles to the beginning, containing 34 1-4 acres more or less.

Tract No. 4. Beginning on a stone Coda's and Troutman's corner in D. S. Morgan's line and runs with Coda's line W. 34 poles to the R. R.; thence with the R. R. S. 41 degrees E. 46 1-2 poles to D. S. Wagoner's line in the R. R.; thence with D. S. Wagoner's line N. 86 poles to the beginning, containing 4 acres, one rod and 21 poles of more or less.

See deed from W. C. Wagoner and wife to P. D. Sides, recorded in Register's office of Cabarrus County in Book 94 on page 15.

The new hard surface highway from Salisbury to Albemarle runs through the above property. There are two good dwelling houses on the property. The bid on this property now stands at \$1758.75.

This the 15th day of June, 1927. A. P. HARRIS, Receiver of Peoples Bank & Trust Company. R. L. Smith & Son, Attorneys.

TIME OF CLOSING MAILS

The time of the closing of mails at the Concord Postoffice is as follows: Northbound. 130-11:00 P. M. 30-10:00 A. M. 34-4:10 P. M. 35-8:30 P. M. 30-11:00 P. M. Southbound. 30-9:25 A. M. 45-8:20 P. M. 135-8:00 P. M. 29-11:00 P. M.

RAILROAD SCHEDULE.

In Effect June 19, 1927. Northbound. No. 140 To New York 9:21 P. M. No. 130 To Washington 5:05 A. M. No. 36 To New York 10:23 A. M. No. 34 To New York 4:33 P. M. No. 46 To Danville 3:15 P. M. No. 12 To Richmond 7:09 P. M. No. 32 To New York 9:03 P. M. No. 30 To New York 2:12 A. M. Southbound. No. 45 To Charlotte 3:36 P. M. No. 35 To New Orleans 9:53 P. M. No. 29 To Birmingham 2:15 A. M. No. 31 To Augusta 5:51 A. M. No. 33 To New Orleans 8:15 A. M. No. 11 To Charlotte 8:00 A. M. No. 135 To Atlanta 8:37 P. M. No. 39 To Atlanta 9:45 A. M. No. 37 To New Orleans 11:29 A. M. Train No. 34 will stop in Concord to take on passengers going to Washington and beyond. Train No. 37 will stop here to discharge passengers coming from Washington and beyond. All trains stop in Concord except No. 38 northbound.

Bible Thought for the Day

The Words of God—The words of the Lord are pure words: As silver tried in a furnace on the earth, purified seven times. Psalm 12:6. Prayer—May Thy Word, O Lord, ever be a lamp to our feet and a light to our path.

LOCAL AND OTHERWISE.

Three cases of whooping cough were reported Tuesday to the Cabarrus county health department. C. L. Guion, who for several years was connected with the Pearl Drug Store, has returned to the store after being in Aberdeen for some time. Bufford A. Sides of this city has accepted appointment in the reserved corps, according to announcement from Washington, D. C., as a second lieutenant. Monday passed without the report of any communicable or contagious diseases at the office of the register of deeds. It was to Alton Bruce Conrad, of Lexington, and Miss Dorothy Roberts, of Concord. Miss Lavetta Stout has accepted the position of choir director and soloist at Central Methodist Church, and will begin her duties in this capacity next Sunday. One of the heaviest rains of the month fell in Concord early Tuesday night. The precipitation continued for several hours, bringing a drop in temperature. The rain followed an afternoon of overcast skies and low-hanging clouds. T. R. Sturgis is no longer connected with Sturgis and Smith Motor Company, dealers in Pontiac and Oakland automobiles. Mr. Smith and Mr. Sturgis organized the firm several months ago here and Mr. Smith will operate it from now on, it was said Tuesday.

CONCORD PRODUCE MARKET

(Corrected Weekly by Cline & Moore) Figures named represent prices paid for produce on the market. Eggs 25 Corn 72 Sweet Potatoes \$1.00 Turkeys 25 Onions \$1.00 Peas \$1.22 Butter 25 Country Ham 30 Country Shoulder 20 Country Sides 20 Young Chickens 25 Hens 18 Irish Potatoes \$1.50

PLAINTIFFS ARE GIVEN DAMAGES IN SUIT HEARD

Eli and E. W. Honeycutt Awarded Sums of \$138.50 and \$45 With Interest From Defendants. Eli Honeycutt and W. E. Honeycutt were awarded a total of \$183.50 with interest from E. T. Bost and E. T. Bost, Jr., according to a verdict returned yesterday by the jury in the special term of Civil Court now in session here with Judge Nat A. Townsend, of Dunn, presiding. The verdict brought in was that the defendant is indebted to plaintiffs for use of plaintiffs tractor as alleged in the complaint to the sum of \$138.50 with interest, and that the defendant is indebted to the plaintiff on account of belting and rope paid for by defendant as alleged in the complaint to the sum of \$45 with interest.

CONCORD COUPLES OBTAIN LICENSES IN YORK TO MARRY

Several Cabarrus Couples Among 30 North Carolina Couples to Secure Marriage Licenses at York. Six couples of Cabarrus county were among the 30 couples who visited York, S. C., during the past seven days to obtain marriage licenses. They were: James H. Wilkinson, Concord, and Anna Whisnant, Charlotte. Harold H. Irvine and Mildred Honeycutt, Concord. Willie Wells, Courtney, and Donnie Allman, Concord. Webb Daniel, and Wilma Bolick, Kannapolis. Dewey Tilly and Clare Lynch, Kannapolis. Sherman Sprinkle and Effie Chase, Kannapolis.

ARREST NEGRO IN CONNECTION WITH SEIZURE OF STILL

Wilbert Kitchen, South Carolina Negro, Jailed Following Seizure of Copper Still Last Sunday. Wilbert Kitchen, South Carolina negro, is being held in the Cabarrus county jail in default of bond in the amount of \$250 for trial in Superior court on charges of violating the prohibition law. Kitchen is alleged to be the operator and owner of the 40-gallon copper distillery which was seized by Deputy Sheriff A. B. Medlin last Sunday morning. Kitchen was taken in custody by officers Monday night. The negro was given a hearing yesterday. Guests Here For Conrad-Roberts Wedding. Among the out-of-town guests here for the Conrad-Roberts wedding which was solemnized yesterday afternoon at 4 o'clock at the home of the bride's parents, Mr. and Mrs. J. W. Roberts, on Ann St., were: Samuel Sox,

COOK VS. ASBURY CASE IS SETTLED IN COURT HERE

One Divorce Decree Also Given During Tuesday's Session Before Judge Nat A. Townsend. The case of C. A. Cook vs. Theodore Asbury was settled Tuesday at the special term of Civil Court now in session here with Judge Nat A. Townsend, of Dunn, presiding, when the jury brought in the verdict for the plaintiff for \$1,338.25 and a \$50 verdict for the defendant in a counter-charge set up. The plaintiff said that he contracted to rebuild a house for the sum of \$1,250 and did other work amounting to \$88.25, making a total of \$1,338.25, and asked that that amount be given him with the interest from the month of August, 1926. He was awarded the \$1,338.25. It was found that the plaintiff was indebted to the defendant on account of counter claim set up in answer to the amount of \$50. The larger part of Tuesday afternoon's session of the Court was taken up with the case of Eli and W. E. Honeycutt vs. E. T. Bost and E. T. Bost, Jr. The attorneys in the case completed their case and Judge Townsend was charging the jury when court adjourned for the day. He completed the charge to the jury when court convened this morning.

LOCAL AND OTHERWISE.

Three cases of whooping cough were reported Tuesday to the Cabarrus county health department. C. L. Guion, who for several years was connected with the Pearl Drug Store, has returned to the store after being in Aberdeen for some time. Bufford A. Sides of this city has accepted appointment in the reserved corps, according to announcement from Washington, D. C., as a second lieutenant. Monday passed without the report of any communicable or contagious diseases at the office of the register of deeds. It was to Alton Bruce Conrad, of Lexington, and Miss Dorothy Roberts, of Concord. Miss Lavetta Stout has accepted the position of choir director and soloist at Central Methodist Church, and will begin her duties in this capacity next Sunday. One of the heaviest rains of the month fell in Concord early Tuesday night. The precipitation continued for several hours, bringing a drop in temperature. The rain followed an afternoon of overcast skies and low-hanging clouds. T. R. Sturgis is no longer connected with Sturgis and Smith Motor Company, dealers in Pontiac and Oakland automobiles. Mr. Smith and Mr. Sturgis organized the firm several months ago here and Mr. Smith will operate it from now on, it was said Tuesday.

Why let Mosquitoes rob you of sleep?



If mosquitoes or other hateful insects infest your room, you can destroy them quickly, easily and completely by a moment's spraying of Se-fly-go. The improved insecticide.

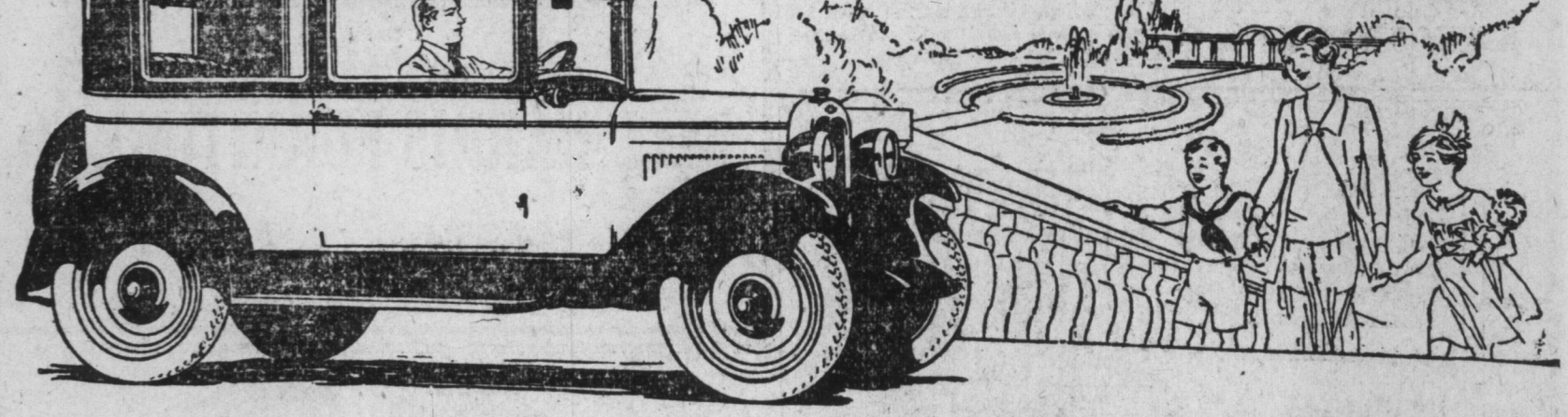
SE-FLY-GO is made by a long-established chemical company. It is offered as the most dependable killer of insects.

SE-FLY-GO has been tested by the most competent chemical experts. It destroys insect life, immediately, completely. It has an agreeable odor and WILL NOT STAIN fabrics, walls or woodwork.

Manufactured and Guaranteed by The Selig Co., Atlanta. RITCHIE HARDWARE CO. CONCORD, N. C. KANNAPOLIS STORE CO. KANNAPOLIS, N. C.



Chevrolet has changed every idea of how fine a car you can buy for little money



Because it offers a host of costly car features and refinements, and a type of performance previously undreamed-of in a low-priced automobile—the Most Beautiful Chevrolet has changed every idea of how fine a car you can buy for little money. Regardless of the car you may now be driving, regardless of the price you expect to pay for your next automobile—come to our salesroom and see the new Chevrolet models. You will find literally scores of quality features that make Chevrolet absolutely unique in its price class. You will find beauty of line and elegance of appointment comparable to the costliest custom cars.

- Scores of Quality Car Features! AC Oil Filter, Coincidental Steering and Ignition Lock, Dry Disc Clutch, Fish-tail Modeling, AC Air Cleaner, Bullet-type Head Lamps and Cowl Lamps, 17-inch Steering Wheel, Gasoline Gauge, Harrison Radiator, Enclosed Bodies by Fisher, Tire Carrier Mounted Free From Body, One-piece Full Crown Fenders, Reliable Oil Pump, Nicked Hardware, Ternstedt Window Regulators.

The COACH \$595. The Touring or Roadster \$525. The Coupe \$625. The 4-Door Sedan \$695. The Sport Cabriolet \$715. The Landau \$745. The Imperial Landau \$780. 1/2 Ton Truck \$395. 1 Ton Truck \$495. All Prices Excl. Flint Michigan. Check Chevrolet Delivered Prices. They include the lowest handling and financing charges available.

WHITE AUTO COMPANY. E. Corbin Street. Phone 298. QUALITY AT LOW COST

Shingles, Cement.

Just in. A car load of that Celebrated BRAND British Columbia Red Cedar Shingles. They are sawed from the choicest Size full 18 inches long full plump thick edge grain. Every Shingle perfect knots or bad timber. The makers' guarantee for 50 years' best, but is very much the best—times, in our ware rooms here. RIVERTON LIME FRESH in big need only a bag or five tons—use RIVERTON.

Cline & M. P. S.—e want all your Country