



# THE GREAT DISCOUNT SALE CLOSES AUGUST 12th.

The privilege is yours until Midnight, August 12th to buy Clothing at our present prices.

A GREAT OPPORTUNITY, CERTAINLY.

With the strike of the clock on the night of August 12th at 12, your chance to share in one the best Clothing offers we have ever made

WILL HAVE PASSED.

We sound the last note of warning in order that no one may be shut out from the great benefits of this Sale without a chance to participate.

If you fail to take advantage of our offer the fault will be Yours, not Ours

HERE'S THE LAST CALL.

MEN'S SUITS		BOYS' SUITS		PANTS.	
\$1 Men's Suits now	\$3.20.	25 PER CENT. DISCOUNT.		\$1.50 Pants now	\$1.20.
\$5 Men's Suits now	4.	\$2 Suits now	\$1.50.	\$2 Pants now	\$1.60.
\$7.50 Men's Suits now	6.	\$3.50 Suits now	\$2.63.	\$2.50 Pants now	\$2.
\$10 Men's Suits now	8.	\$4 Suits now	\$3.	\$3 Pants now	\$2.40.
\$12.50 Men's Suits now	10.	\$5 Suits now	\$3.75.	\$3.50 Pants now	\$2.80.
\$15 Men's Suits now	12.			\$5 Pants now	\$4.
\$20 Men's Suits now	16.				
\$25 Men's Suits now	20.				

MEN'S STRAW HATS 75, \$1, \$1.50, \$2, Straw Hats, Your Choice for 25c.

Everybody seems to be coming to our Great Sale. If you have not been yet, you should come at once for your own benefit and see what is going on.

**N. L. CRANFORD & COMPANY,**  
The One Price Clothiers,  
Winston, N. C.

## CALIFORNIA

Do you want to live where the climate is mild the year round—where labor is never oppressed by stress of weather, and where animal vitality is never lost by mere conflict with cold?

Do you want to live in a region where the resources are more varied than in any other equal area in the world, where the division of great ranches affords a fine opportunity to get a small farm that will assure you a competence?

Do you want to live where, with a minimum of labor, you can grow profitable crops of grapes and small fruit, oranges, lemons, olives, prunes and almonds, alfalfa and grain, where crops are sure, business is good and capital easily finds profitable investment?

Then go to California, where both health and opportunity await your coming.

### The Chicago, Union Pacific and North-Western Line

is the most direct route to the Pacific Coast, and there are two fast through trains daily via this line, over the famous double-track railway between Chicago and the Missouri River.

Special low round-trip rates are in effect via this line throughout the summer to various Pacific Coast points, and colonist low rate one-way tickets will be on sale during September and October, which give an unusual chance for settlers to make the trip at a minimum of expense.

Daily and personally conducted excursions are operated through to San Francisco, Los Angeles, and Portland without change, on which a double berth in a Pullman tourist sleeping car from Chicago costs only \$7.00, via the

### Chicago & North-Western, Union Pacific and Southern Pacific Railways.

W. B. KNISKERN,  
P. T. M. C. & N.-W. Ry., Chicago, Ill.  
Please mail free to my address, California booklets, maps and full particulars concerning rates and train service.

FILL IN THIS COUPON  
AND MAIL IT TO-DAY.

### N. & W. Norfolk & Western R.R.

SCHEDULE IN EFFECT JUNE 11, 1905

Daily Ex. Sun.	Daily	Daily
PM	AM	PM
2:50	7:30	Lv Winston Ar 2:00 10:00
3:28	8:13	" Wal. Cove " 1:21 9:20
A. M.		
5:00	9:50	" Martinsv. " 11:45 7:49
7:25	12:30	Ar Roanoke Lv 9:15 5:15

WESTBOUND—LEAVE ROANOKE DAILY.

4:10 a m.—For East Radford, Bluefield, Tazewell and Norton. Pullman Sleeper to Columbus, Ohio, etc. car.  
5:15 a m.—(Washington and Chattanooga Limited) for Palaski, principal stations, Bristol and the South. Pullman Sleepers to New Orleans and Memphis. Cafe car.  
4:25 p m.—The St. Louis Express, for Bluefield, Pocahontas, Kenova, Cincinnati, Indianapolis, St. Louis, Kansas City, Columbus and Chicago. Pullman Buffet Sleepers Roanoke to Columbus and Bluefield to Cincinnati. Cafe car.  
4:35 p m.—For Bluefield and intermediate stations.  
1:45 p m.—Daily. For Bristol and intermediate stations, Knoxville, Chattanooga and points South. Pullman Sleeper to Knoxville.  
9:10 a m.—For Bristol and intermediate stations, Bluefield, Norton, Pocahontas and Welch. Pullman Sleeper to Welch.

NORTH AND EASTBOUND.

1:50 p m.—For Petersburg, Richmond and Norfolk. Pullman Buffet and/or car to Norfolk.  
1:45 p m.—For Washington, Hagerstown, Philadelphia and New York via Hagerstown and Harrisburg. Pullman Sleeper to New York.  
8:10 p m.—For Hagerstown. Pullman Sleeper to Philadelphia.  
1:01 a m.—For Richmond and Norfolk. Pullman Sleeper Lynchburg to Norfolk and Richmond.  
12:01 a m.—(Washington and Chattanooga Limited) For Washington, Philadelphia and New York via Lynchburg. Pullman Sleepers to Washington, Baltimore, Philadelphia and New York.  
7:10 a m.—For Lynchburg, Petersburg, Richmond and Norfolk.  
8:35 p m.—Daily. For Lynchburg. Pullman Sleeper for Richmond.

DURHAM DIVISION.

Leave Lynchburg (Union Station) daily except Sunday. 3:00 a m. 4:30 p m. for South Boston and Durham and intermediate stations.

For all additional information apply to ticket office, or to  
W. B. DEVILL, M. F. BRAGG,  
Gen'l Pass. Agent, Trav. Pass. Agent,  
ROANOKE, VA.

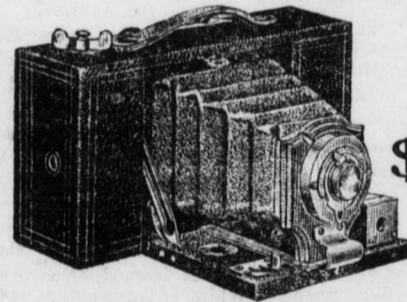
### KILL THE COUGH AND CURE THE LUNGS

WITH Dr. King's  
New Discovery

FOR CONSUMPTION  
COUGHS and  
COLDS Price  
50c & \$1.00  
Free Trial.

Surest and Quickest Cure for all  
THROAT and LUNG TROUBLES,  
OR MONEY BACK.

## No. 2 Folding Brownie



Price,  
\$5.00

A wonderfully capable and accurate camera built on the Kodak plan. Good enough to satisfy experienced photographers, yet so simple that children can use it.

PICTURES 2 1/4 x 3 1/4 inches.  
Loads in daylight with film Cartridges.

Fitted with meniscus lens, and shutter with iris diaphragm stops.

Full description in Kodak Catalog FREE at any photographic dealers or by mail.

EASTMAN KODAK CO.,  
Rochester, N. Y.

Send your orders for job work to the Reporter Office.