

All Dogs in the County Must Be Vaccinated Against Hydrophobia

Pursuant to a resolution of the County Board of Health, passed on the First Monday in September, 1925, in regular session at the court house at Dobson, requiring all owners of dogs to have the same vaccinated, and for the convenience of owners of dogs in Surry County, I will be at the places hereafter named at the time and dates given for the convenience of dog owners who MUST comply with this requirement. The undersigned has been designated and employed by the county for this purpose. The fee for the vaccination of each dog will be \$1. which fee must be paid by the owner of the dog at the time of vaccination. Have your dogs on hand at the time and places given below. Tag and certificate to be attached when dog is vaccinated.

The places and dates where vaccinations will be made are given below:

- | | |
|--|--|
| Sat., Oct. 3, 10, 17, 24 & 31 | Burch Station, 10.30 to 11.30 A. M. |
| Mount Airy, N. C., at office of Dr. R. J. Banks, over Wolfe Drug Co. | Elkin, Bray's Mill, 12.30 to 3 P. M. |
| Monday Oct. 5th, 1925. | State Road, P. O., 4 to 5 P. M. |
| Dobson, N. C., Stone's Drug Store. | Zephyr, Floyd Eldridge's, 5.30 to 6.30 P. M. |
| Wednesday, Oct. 7th, 1925 | Wednesday, Oct. 21st, 1925. |
| S. J. Deatherage's Store, Cross Roads, 8 to 10 A. M. | Kapps Mill, 9 to 10 A. M. |
| Jesse Vaughn's Store, Slate Mountain, 10.30 to 12.00 M. | Park Mountain, 10.30 to 11.30 A. M. |
| Beim, N. C., 12.30 to 2 P. M. | Park Station, 12 M. to 12.30 P. M. |
| Monday, Oct. 12th, 1925. | Thurmond, 1 to 2 P. M. |
| Co. Scott's Store, Shelton, 8 to 9 A. M. | Morgan Cockerams, 2.30 to 3.30 P. M. |
| Woolf's Store, Woodville, 9.30 to 11 A. M. | Walter Blevins' Store, near Mickel Bridge, 4 to 5 P. M. |
| Hunter's Store, Westfield, 11.30 A. M. to 1.30 P. M. | Friday, Oct. 23rd, 1925. |
| Wall Matthews, Westfield Township, 2 to 3.30 P. M. | Pine Ridge, Gardner's Store, 9 to 10 A. M. |
| Rev. Jim Morrison's Store, Pilot Mountain road, 4 to 5.30 P. M. | Oak Grove, Patsy Richard's, 10.30 to 12 M. |
| Thursday, Oct. 15th, 1925 | Lowgap, Woodruff's Store, 12.30 to 1.30 P. M. |
| Geo. Nichols Store, White Plains, 8 to 9.30 A. M. | Round Peak, P. O. 3 to 4 P. M. |
| Wood's Store, Copeland, 9 to 11 A. M. | Monday, Oct. 26, 1925. |
| Rockford, N. C., 11.30 A. M. to 1.30 P. M. | Job Simmons' Store, Cross Roads, 8 to 9 A. M. |
| White's Store, Yokem, Cross Roads, 2 to 3.30 P. M. | W. L. Shaw's Store, above Shorttown, 9.30 to 10.30 |
| Crutchfield, N. C., depot, 4 to 5 P. M. | Wednesday, Oct. 28, 1925. |
| Monday, Oct. 19th, 1925. | Ararat, Chilton's Store, 9 to 10 A. M. |
| Fairview, Norman's Store, 9 to 10 A. M. | Pilot Mountain, Smith's Drug Store, 10.30 A. M. to 1 P. M. |
| | Key's Store, near Stony Ridge, 1.30 to 2.30 P. M. |
| | Siloam, at R. R. Station, 3 to 4 P. M. |
| | Harbour's Store, 4.30 to 5 P. M. |

Be on hand on these dates at the time and places named, thus avoiding danger of hydrophobia in your dogs, and complying with the law. Every dog in the county must, under the law, be vaccinated.

By order of the County Board of Health of Surry County.

R. J. BANKS, V. S.

THE SOUTHERN SERVES THE SOUTH

All share the benefits of this gain in operating efficiency

We are now carrying 130% more freight than we did twenty years ago, but with an increase of only 10% in the mileage run by our freight locomotives.

This increased efficiency has been made possible by the large investment of capital in more powerful locomotives, larger freight cars, greater track and terminal facilities, and the reduction of curves and grades.

The results have been—

- Better transportation service for the South;
- Higher wages for our employees;
- Freight rates lower in proportion to the general level of prices than they were before the war;
- Earning power that will attract new capital for expansion.

All share the benefits of this gain in operating efficiency.



SOUTHERN RAILWAY SYSTEM

Mrs. John Chilton Dead—Obituary Westfield News

Westfield, Oct. 5.—The funeral of Mrs. John Chilton was conducted from the Friends Church Saturday by Wesley Weston of White Plains and Dr. Tom Smith of Westfield. Mrs. Chilton was Corneilia Jessup, daughter of William Jessup, age 72. There are four sisters living, Mrs. A. Tilley, Mrs. Cole Simmons, Mrs. Sandy Christian, Mrs. Mary Jane Jessup and two brothers Jacob W. and Andrew Jessup. Mrs. Chilton had been a member of the Friends church from her childhood and lived a high class christian life.

A large crowd was in attendance and many beautiful flowers were in evidence.

But little tobacco went from here to Winston for sale Saturday, farmers were disappointed in the price but the offerings were common.

The corn crop is as good as last year but potatoes of both kinds are common and hay very short, there are rather more hogs and better than last fall.

The Cook Real Estate Co. reported one sale last week, a corner lot on Main street and Hunter avenue, price \$525.00 spot cash, to a lady from West Virginia going into the millinery business. This sale was brought about by the get together campaign of the Ancient Coon Hunters club of Westfield, the club held their annual meeting last Thursday, same officers being re-elected for next year, secretary and treasurer reported plenty of cash on hand for all the members to take trips to any point not exceeding 100 miles.

John Marshall, of Westfield will be with the Banner warehouse this season.

Mrs. S. P. Christian is in Danbury -ping house for her sister who is in a hospital in Richmond, Va.

A Message From Crossnore School

Our second hand clothes sale has kept up better this summer than any previous summer and we feel that it is largely due to the space which the newspapers of our State so kindly gave us in June, but I fear that our people are forgetting us once more and so we are asking you to remind them again to gather their old clothes and send them by parcel post to Crossnore, N. C.

We are simply overwhelmed with boarding pupils this term and are having to buy double decker beds to house them. We must provide work for each of these boarders for we take only those who need to be self supporting. It all depends upon the quantity and quality of clothes which you send us this winter, and we urge you to send all you possibly can and as often as you possibly can.

Also will you appeal through your columns for Auto Knitters which were used during the war by the Red Cross and others to knit for the soldiers. We have not the money with which to buy these machines, but if they can be given to us, each one will make it possible for a boy or girl to become self supporting.

Gratefully yours,

Mary M. Stoop, business manager for Crossnore School.

NOTICE

By virtue of an execution in my hands issued by the Clerk of the Superior Court of Stokes county in the case of Ontario Drill Co. vs. J. E. Stanley and others, I will sell at public auction to the highest bidder, for cash, at the court house door in Dobson on the 26th day of Oct. 1925, at one o'clock P. M.,

the following described boundary of land situated in Rockford township, and levied on by me. Beginning on a stone, Sam Dobson's old corner on West side of Dobson and Rockford road, runs W. 6 chs. to a corner in W. M. Stanley's land, thence S. 20 chs. to Peter Dobson's corner in old road, thence East 8 chs. with Peter Dobson's line to said road, thence North with said road as it meanders 23 chs. to the beginning, containing 12 acres more or less, same being the land conveyed to J. E. Stanley by W. M. Stanley and wife. See deed book 59, page 331. Sale made to satisfy said execution, principal, interest and cost. This Sept. 25, 1925.

C. H. Haynes, Sheriff.

NOTICE

North Carolina, Surry County. By virtue of authority vested in me in a certain deed of trust executed on the 20th day of September by R. D. Bell to H. H. Lewellyn, Trustee, for T. A. Hamilton to secure an indebtedness of \$84.00, said deed of trust being recorded in the Register of Deeds office of Surry County, North Carolina in Book 63, page 237, default having been made in the payments of the notes therein secured and at the request of the holder, I will sell for cash to the highest bidder at public auction in front of the Bennett Building, Mount Airy, N. C., on

Saturday, October 19th, 1925, at 1 o'clock P. M., the following described real estate. Being lot No. 17 in block 3 and lots Nos. 22 and 23 in block 4 as shown in plot recorded in book of plats in the Register of Deeds office at Dobson, Surry County, North Carolina, book 1 page 60, known as Highland Park.

Sale made to satisfy the balance of \$84.00 principal and interest and cost of sale to add. This the 15th day of Sept. 1925. H. H. Lewellyn.

TRUSTEES SALE

By virtue of the power conferred upon the undersigned Trustee by a deed of trust executed on the 19th day of February, 1925, by Thomas J. Nunn and wife Evelyn Nunn, at the request of the Shenandoah Life Insurance Company, Inc., we will sell to the highest bidder, for cash, on the premises on

Friday, October 23, 1925, at 2 o'clock P. M.,

the following described real estate, to-wit:

First tract. Beginning at a rock pile, J. F. Beasley and Goings corner and runs North 76 1-2 East 45 chs. to the Ararat River, corner in Gwyn's line; thence, down the river South 5 deg; East 6.30 chs.; thence, still down the river South 40 deg. East 2 1-2 chs.; thence, South 13 deg; West 9 1-2 chs.; thence, South 48 deg; West 1 1-2 chs. to Wilson's corner on the East side of the river; thence, leaving the river South 48 deg. East 1 ch. to three poplars at the edge of the cliff; thence, with old road as follows: North 6 deg. East 3 1-2 chs.; thence, North 75 1-2 deg. East 2.75 chains; thence, North 67 deg. East 1.55 chs.; thence, North 74 deg. East 1 1-2 chs.; thence, South 44 deg. East 1 1-2 chs.; thence, South 33 deg. East 3 1-2 chs.; thence, South 19 deg. 3 chs.; thence, S. 35 deg. East 1 chain; thence South 7 deg. East 3 chs.; thence South 40 deg. West 1.90 chs. to the edge of the field; thence, South 27 deg. East 2 chs. to ridge road; thence up ridge road N. 75 deg. East 20 chains to an iron pipe on the North side of the road, Beasley's corner; thence, North 33 deg. E. 15 chains with Beasley's line to the beginning, containing 66 1-2 acres, more or less, and being the same land conveyed to the said T. J. Nunn by deed dated the 16th day of January, 1922, and of record in the Register of Deeds Office for the County of Surry, North Carolina, in Book of Deeds, No. 89, page 125, to which deed reference is here made.

Second Tract. Beginning at a walnut and locust in the old Franklin Gwyn line on the North bank of the Ararat River, thence, running with the Sulphur Springs tract, crossing the Ararat River to a maple on the East bank of the said river; thence, running with the East bank of the said river and with the South bank and the Southwest bank of same 3336 feet to Hatcher's corner; thence, crossing Ararat River to J. H. Gwyn and Banner's corner; thence with Gwyn's line North 52 deg. East 495 feet to a planted rock; thence, North 84 deg. East 311 feet to a planted rock; then South 81 deg. East 125 feet to a planted rock; then, South 68 deg. East 311 feet to a planted rock; thence, North 62 deg. East 300 feet to a planted rock; thence North 42 deg. East 360 feet to a planted rock; thence, South 74 deg. East 147 feet to the beginning, containing 46 acres, more or less, and being the land formerly owned by Jim Satterfield and known as the Satterfield bottom; and being the same land conveyed to the said T. J. Nunn by J. M. Parker and his wife and Weldon Parker by deed bearing date of February 18, 1922, and of record in the Register of Deeds office for the County of Surry, North Carolina, in Book of Deeds 89, at page 594, to which deed reference is here made.

Third Tract. Beginning at a horn-beam on the West side of Johnson's creek and runs North 83 deg. West with S. Jarger's line 23.75 chs. to a poplar, T. J. Nunn's corner; thence, South 15 deg. East 300 feet; thence, with the branch as it meanders South 200 feet; thence, South 14 deg. East 200 feet; thence, South 14 1-2 deg. West 200 feet; thence, South 9 deg. East 200 feet; thence South 28 deg. East 300 feet to a stake, Parker and Nunn's corner on the north side of the branch, corner crossing branch South 52 deg. East 434 ch., thence South 50 1-2 deg. West 1.70 chains; thence, with the old White Sulphur Springs road South 2 1-2 deg. East 1.79 chs. thence, South 39 1-2 deg. W 2 chains, thence South 50 deg. East 1 chain; thence South 78 deg. East 2 chs.; thence South 35 deg. East 4.30 chs.; thence South 43 deg. East 3.90 chains to an iron pin, Johnson's corner on the East side of the road; then leaving the road North 35 deg. 45 minutes East 250 feet to the Ararat River; thence with the Ararat River South 56 1-2 deg. East 300 feet; then South 56 deg. East 594 feet; thence South 45 deg. East about 426 feet to a forked birch on the East bank of the Ararat River, R. W. Reece's corner; thence, South 58 deg. East 6 1-3 chs.; thence, North 1 deg. West up the branch 11.55 chs. to a pine stump thence North 30 deg. 30 min. West 26 chs. to a black walnut on the bank of the Ararat River; thence up said river North 30 deg. East about 700 feet to the mouth of Johnson's creek then up Johnson's creek North 45 degrees West about 500 feet to the beginning, containing 116 1-2 acres, more or less. There is excepted from the above boundaries about 2 acres, more or less, of land on the hill between the railroad right-of-way and the old Sulphur Springs road on which is situated the spring on the hill west of the road, the said lot is designated by corners marked by set stones and known as the watering tank lot. Also the water right to the White Sulphur Springs as deed to J. O. Hatcher by J. K. Reynolds and wife January 11, 1920, and recorded in Book 55, page 168. The above boundary being the same land conveyed to T. J. Nunn by Thomas M. Smith and wife by deed dated the 23rd day of January, 1922, and recorded in Book of Deeds, page 125, and which was conveyed to the said Smith by Tom Atkins and wife by deed dated the 16th day of July, 1925, and recorded in Book of Deeds 81 at page 478, to which deed reference is here made for a more particular description of the above tract.

This sale is made to satisfy the balance due on a deed of trust amounting to \$5,000 for money loaned, with interest thereon, from February 15, 1925, and cost to be added. This 19th day of September, 1925. W. J. Henson, W. L. Andrews, Trustees.

EVERYBODY'S DOING IT—drinking Green River. Get yours.

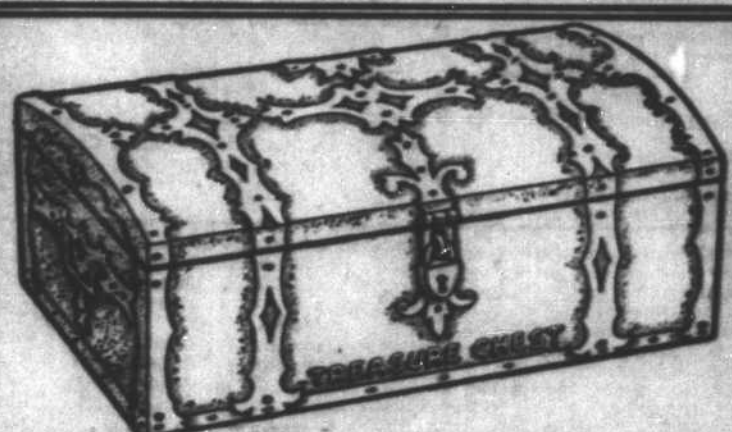
Ready for The Winter



Wet, stormy weather will soon be here and the children need heavier footwear to protect their feet when out of doors. Cold, wet feet means sickness, so why not use this simple ounce of prevention to help your children to keep well.

BUSTER BROWN SHOES

It Always Pays To Trade At Hale's Department Store Mount Airy, N. C.



The time to teach your child to save is in its youth. The saving habit is the first step to success. Give your child this step by securing from us one of these solid copper Savings Banks. Two dollars will open an account and secure a bank.

THE BANK OF MOUNT AIRY 4 Per Cent Compounded Quarterly

NOTICE

Having qualified as administrator of the estate of Fred Queenberry, deceased, late of Surry County, North Carolina, this is to notify all persons having claims against the estate of said deceased, to exhibit them to the undersigned at my office in the town of Mount Airy, on or before the 25th day of September, 1926, or this notice

will be pleaded in bar of their recovery. All persons indebted to said estate will please make immediate settlement.

George K. Snow, Administrator.

WANTED—everybody to drink GREEN RIVER—the snappy lime drink.

Resources Over One Million Dollars

First National Bank Mount Airy, N. C.

Has given satisfactory service to its customers for more than twenty-five years.

What can we do for you?

T. G. FAWCETT, President
W. W. BURKE, Vice-President
E. G. SMITH, Cashier.