



HOTEL OPENINGS.

The Harvard Already Entertaining Many Early Comers.

The Holly Inn Open—The Berkshire Opens January First, and The Carolina January Fifteenth.

The dates for the opening of the various hotels in the Pinehurst System have been definitely fixed. The Harvard, practically an all the year hotel now, to meet the demands of the constantly lengthening early and late season, is now open, and many guests are enjoying the rare November days.

The Holly Inn is just opening, The Berkshire will open January first, and The Carolina January fifteenth.

The hotels will again be under the able general management of H. W. Priest of The Carolina, and A. I. Creamer returns

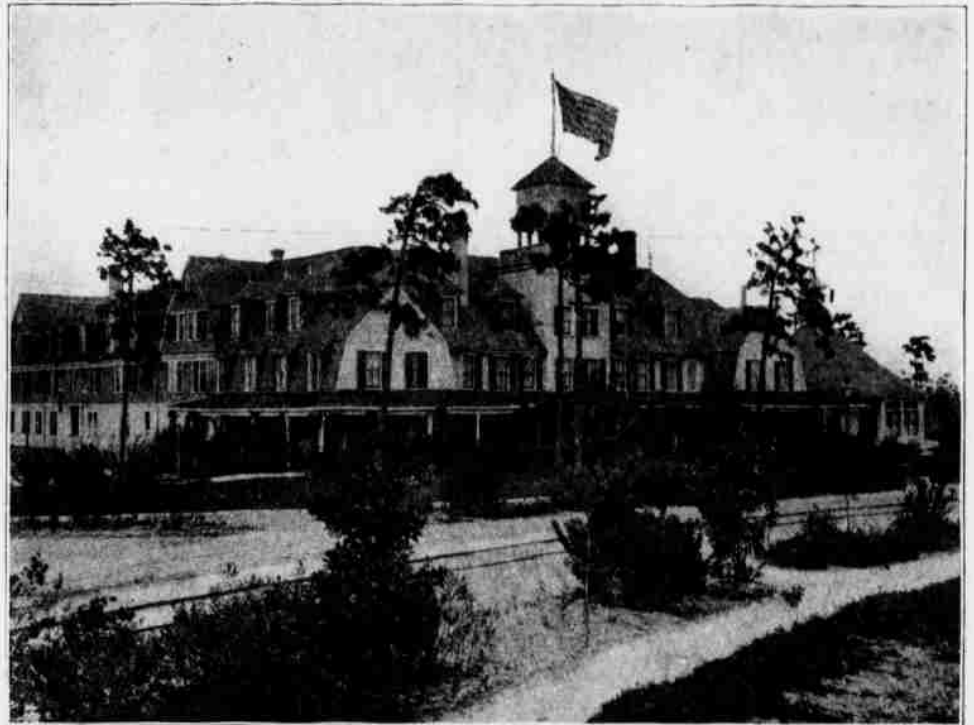
general that he needs no introduction either to past or prospective guests. Mr. Sherrard's hotel experience extends over a period of more than twenty years and has been a varied and valuable one. For two years he was with the Canadian Pacific Railway hotels, being steward of the famous Banff Springs hotel on the opening of that house, and he has held responsible positions in the capacity of manager and steward, with the St. George and Bay Rock hotels, Victoria, B. C.; The Chilberg, Tacoma, Washington; Hotel St. Charles, Portland, Oregon; Mount Vernon, Baltimore; the Bingham House, Philadelphia; the Maplewood, Maplewood, N. H.; the Lincoln House, Swampscott, the Hotel Preston, Beach Bluff, Mass., and many others.

Manager Kimball, formerly of The Berkshire, is prevented from returning to Pinehurst by the ill health of Mrs. Kimball. The announcement will be received with regret by the many guests by whom he is held in high esteem.

Manager Trickey, formerly of The

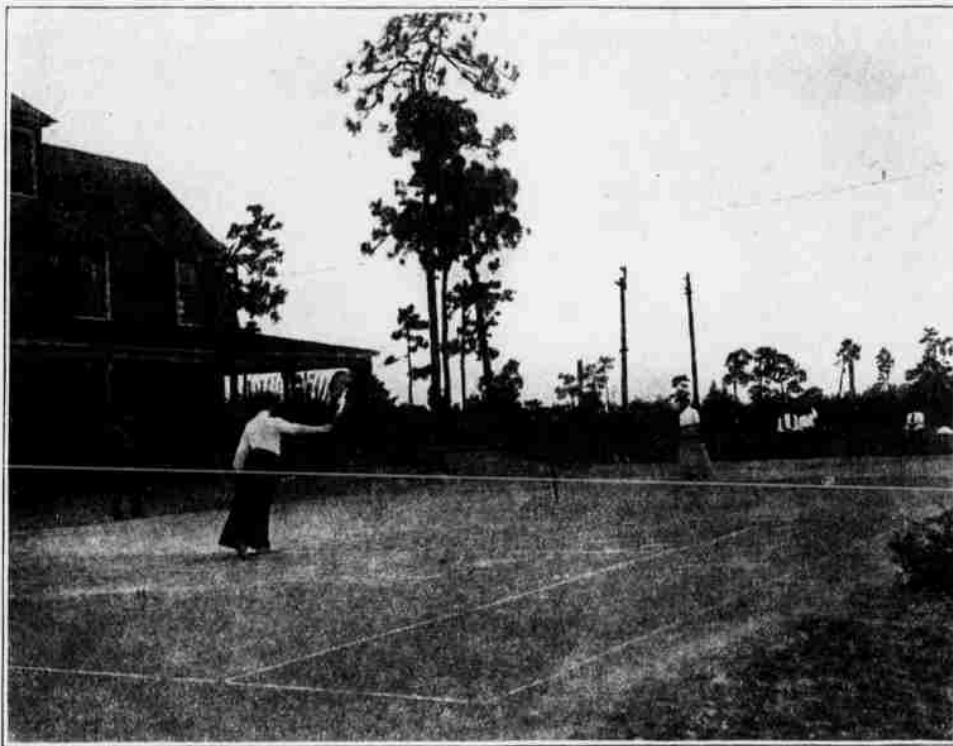
THE HOLLY INN

PINEHURST, N. C.



The Holly Inn is one of the most attractive hotels in the South. Since it was built in 1895, it has been necessary to enlarge it several times to meet the constantly increasing demand. The interior is elegant, cheerful and tasteful. No modern convenience is lacking. There are bath rooms, electric lights, steam heat and open fireplaces. There is a call bell in every room, and all beds are furnished with best hair mattresses. An orchestra furnishes fine concerts daily, and also provides for dancing. The cuisine is unsurpassed. The waitresses are all white girls from the North. Rooms for billiards and other games are provided in the hotel.

A. I. CREAMER, Manager.



ON THE HOLLY INN TENNIS COURTS.

for his second season at The Holly Inn.

F. H. Abbott succeeds W. W. Trickey as manager of The Harvard, and will also assume management of The Casino. Mr. Abbott is a hotel man of wide experience who has been closely identified with the Uplands at Bethlehem, N. H., having been its manager for the past fifteen years, and largely responsible for the necessary enlargement which has been made from time to time and which now makes the hotel the second in size in Bethlehem, the leading summer resort of the White Mountains.

Mr. Abbott's winter seasons have been spent in Florida. In 1891 he was manager of the San Juan Hotel at Orlando, in 1895 he took charge of the Punta Gorda Hotel at Punta Gorda, and in 1898 the Fort Myers Hotel at Fort Myers. Mr. Abbott remained at Fort Myers until last year when the property was sold to settle an estate.

J. A. Sherrard, so pleasantly remembered by guests at The Carolina, succeeds F. B. Kimball as manager of The Berkshire, and his popularity here is so

Harvard, is kept in the north by varied business interests, and his presence will be missed by former guests.

THE GAME OF ROQUE.

Not a Strenuous Sport, but Popular with Young and Old.

Roque or croquet, is a popular game at Pinehurst and many fine courts are to be found throughout the Village. The game is adapted either for contest or pleasure, one or many, young or old, and the "duffer" and the expert may both find enjoyment in it.

As exercise it is not strenuous, but it keeps one out in the glorious air and sunshine and develops an accurate eye and keen judgment.

Trolley Schedule.

The Pinehurst Electric Railroad is at present connecting with trains 31 and 41 at Southern Pines and will connect with other trains on due notification to the General Office.



THE HARVARD.

PINEHURST, N. C.

This recently completed hotel is centrally located between The Carolina and The Holly Inn.

It is modern in every respect, having electric lights, steam heat and several

suites with baths, and with its cottage annex and large dining room accommodates seventy-five guests.

The Cuisine is in charge of a competent chef, and the table service is guaranteed satisfactory.

F. H. ABBOTT, Manager.

Pinehurst Casino and Cafe.

The Casino

Is designed for the use of the residents of the Village, all of whom are invited to avail themselves of its privileges. The Ladies' Parlor and The Cafe, are on the first floor. Upon the second floor a Reading Room, supplied with daily papers and various periodicals; Game, Smoking and Bath rooms.

The Cafe

Provides excellent New England cooking.

A Bakery is connected where families can obtain supplies.

F. H. ABBOTT, - - - MANAGER.

THE CEDARS,

PINEHURST, N. C.

Apartments singly and en suite; bath, electric lights, steam heat, open fireplaces and double parlors; conveniently located to The Casino where board may be obtained. Prices \$2.50 to \$7.00 Weekly.

Mrs. Alice M. Stacey, Manager.