

WINTER'S PROGRAM BEGUN

First of Season's Trap Shooting Tournaments Close Contest.

J. G. Anderson of Pittsburg, Wins Cup by Small Margin of Two Targets—Large Gallery Present.



THE season's program of trap shooting tournaments was begun Tuesday with fifty single bird, expert trap, handicap, event in which considerable interest was manifested by a large company of onlookers.

J. G. Anderson, of Pittsburg, (2), won with a net score of 40, with M. K. Waters of Lakewood, N. J., (4), a close second in 38. Other participants included W. E. Hervey, Far Rockaway, N. Y., (0), who broke 33, F. A. King, Northboro, Mass., and Herbert L. Jillson, Worcester, Mass.

E. H. Store, of the Peters Cartridge Company, was one of the participants breaking forty-three, but not a competitor, being barred as a professional.

The full program of events to come follows:

Jan. 31—Fifty targets, handicap, Maugautrap—Sterling Silver cup.

Feb. 14—Ten targets right, Ten left, Ten unknown, Ten overhead, handicap, Tower Trap—Sterling Silver cup.

Feb. 28—Annual team shoot between The Carolina and Holly Inn, One hundred singles, Maugautrap, scratch—Shield for winning team.

March 7—Fifty targets, scratch, expert traps—Sterling Silver cup.

March 21—Ten targets right, Ten left, Ten unknown, Ten overhead, Ten double handicap, Tower Trap—Sterling Silver cup.

March 27-28-29—Annual Pinehurst Gun Club Championship Gold Medal Tournament, scratch, open to those who have contested in one or more previous tournaments. Fifty targets expert traps; Fifty targets Maugautrap; Ten targets right, Ten left, Ten unknown, Ten overhead, Tower Trap.

NOTE—There will also be a shoot for the Annual Pinehurst Championship Cup (Sterling Silver) open to all those who enter the same; one contestant cannot take both prizes.

The trophies are all handsome Gorham cups and Frick medals.

The entrance fee for all events but the championship is twenty-five cents.

The traps at the Gun Club grounds are always available for use, an attendant being stationed there most of the time or sent upon request at the General Office. Only the usual charge for birds is made as the Club members pay no dues.

Miss Walker Returns.

Miss Laura Agnes Walker, Boston, manicurist and masseuse, returns to The Carolina for the season. Her patrons will, as usual, include many of the villagers.

SQUIRRELS ARE FRIENDLY

They Domesticate Readily and are Exceptionally Intelligent.

Of the animals that we can coax about our houses, the gray squirrels become most friendly, says *Country Life in America*. Put nuts in convenient places and they will make frequent trips for supplies, but only on comparatively mild days will they remain long outside their comfortable winter quarters, where they usually have plenty of food stored. In Central Park, New York, the gray squirrels have become so accustomed to being fed that they have, to a great extent, given up storing food and rely chiefly on what they can pick up each day.

Red squirrels can be coaxed by means of food, but they are very questionable fellows; in fact, the general opinion is decidedly against them, owing to their partiality for eggs and young birds. Chipmunks hibernate in their underground homes, so we cannot count on them for winter visitors. The cotton tail will condescend to accept dainties in the form of green vegetable (through one seldom has such luxuries in the winter), but, as he comes almost entirely at night, he is not a very interesting guest.

No feature of the collection of animals near the Deer Park has more interest for Pinehurst guests than the squirrel cage, young and old being included among those who congregate there.

"Exposure" Defined.

Popular ignorance of the meaning of the term "injurious exposure" is responsible for much sickness, says the *New York World*. Initially the fault is due to the lowering of the resisting power of the body, because the same exposure which may invigorate one man may kill another. A walk in the open air even in a rain or snow storm is not exposure in anything like the injurious sense of a slight draught in a heated room, damp clothing or improper diet or excessive stimulants. It is not exposure to fresh air, to sunshine, cold or rain that is injurious, but exposure to bad hygienic conditions.

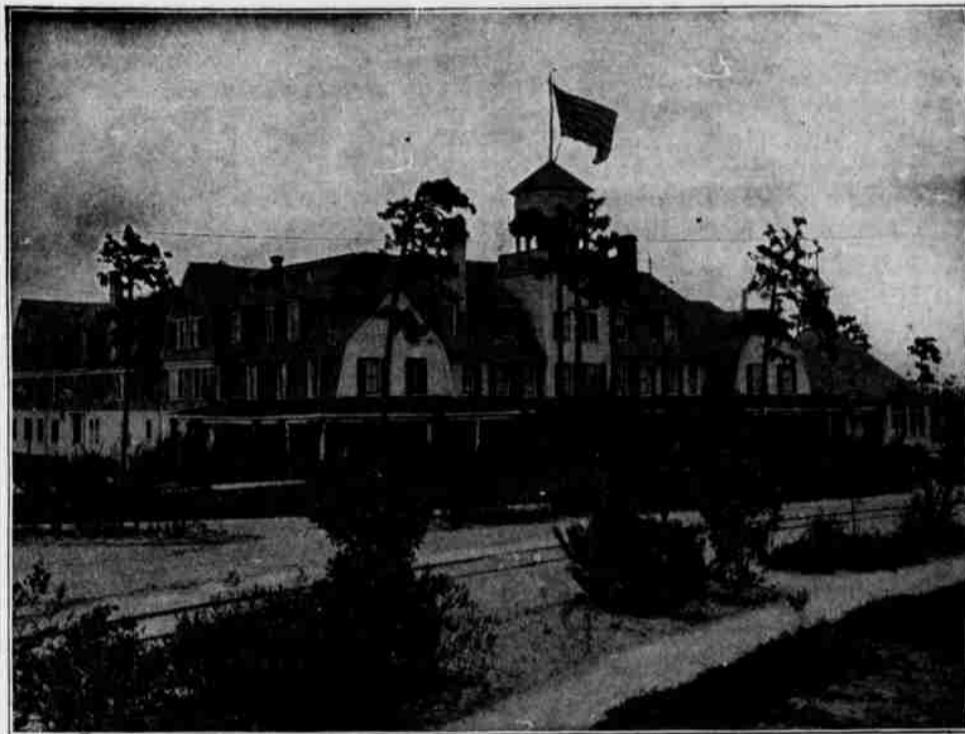


WHEN YOU HAVE FOUR.

Customer—What are the best kind of calling cards?
Clerk (absently)—Aces.

THE HOLLY INN

PINEHURST, N. C.



The Holly Inn is one of the most attractive hotels in the South. Since it was built in 1895, it has been necessary to enlarge it several times to meet the constantly increasing demand. The interior is elegant, cheerful and tasteful. No modern convenience is lacking. There are bath rooms, electric lights, steam heat and open fireplaces. There is a call bell in every room, and all beds are furnished with best hair mattresses. An orchestra furnishes fine concerts daily, and also provides for dancing. The cuisine is unsurpassed. The waitresses are all white girls from the North. Rooms for billiards and other games are provided in the hotel.

A. I. CREAMER, Manager.



The Harvard,

PINEHURST, N. C.

This recently completed hotel is centrally located between The Carolina and The Holly Inn.

It is modern in every respect, having electric lights, steam heat and several suites with bath and with its cottage annex and large dining room accommodates seventy-five guests.

The Cuisine is in charge of a competent chef, and the table service is guaranteed satisfactory.

F. H. ABBOTT, Manager.

THE UPLANDS

BETHLEHEM, N. H.

F. H. ABBOTT,

Proprietor.

Address until May 1st, PINEHURST, N. C.

Hotels Guilford-Benbow,

GREENSBORO, N. C.

An ideal point for tourists to spend the night en route to Pinehurst. Two of the most complete and best equipped hotels in the south, on the main line of the Southern Railway, and a thirty minutes drive from the historic Guilford Battle Grounds of Revolutionary fame.

Greensboro is a beautiful old southern city, has fine Opera House, beautiful streets, and is surrounded by picturesque macadamized roads. All Pullmans via Southern Railway for Pinehurst and the south stop within two blocks of these hotels.

COBB & FRY.