



**S. S. PIERCE CO.,**

ESTABLISHED 1831. **IMPORTERS AND GROCERS** INCORPORATED 1894

Tremont and Beacon Sts.  
Copley Square.  
185 Milk St., (Wholesale)

**BOSTON.**

Coolidge's Corner,  
**BROOKLINE.**

**YARBOROUGH HOUSE,**

**RALEIGH, N. C.**

A STRICTLY HIGH CLASS HOSTELRY SITUATED ON THE SEABOARD AIR LINE RAILWAY, THOROUGHFARE BETWEEN NEW YORK AND FLORIDA, AND WITHIN ONE HOUR OF PINEHURST, N. C.

RALEIGH IS A CITY OF HOSPITABLE PEOPLE, PRETTY HOMES, DELIGHTFUL CLIMATE, FINE MACADAMIZED ROADS, INSTRUCTING MUSEUMS NUMEROUS STATE INSTITUTIONS, AND MUCH HISTORIC INTEREST.

WRITE FOR ILLUSTRATED BOOKLET.

**HOWELL COBB.**



A full line of  
**COLUMBIA,**  
**SAXONY**

**Floss and Germantown Yarns**

ALWAYS ON HAND,  
Prices Reduced this Week.

**Pinehurst Department Store.**

**FOR THE OUTLOOK TROPHIES**

**Big Field Contests for Them in Saturday's Medal Play Handicap.**

**C. L. Becker Wins Class A and J. E. Kellogg Class B--Beauty of Day Contributes to Pleasure of all.**



ATURDAY'S eighteen hole medal play handicap for THE PINEHURST OUTLOOK trophies, offered for the best net score in two classes, A and B, drew a good field, and the beauty of the day added much to the pleasure and success of the event.

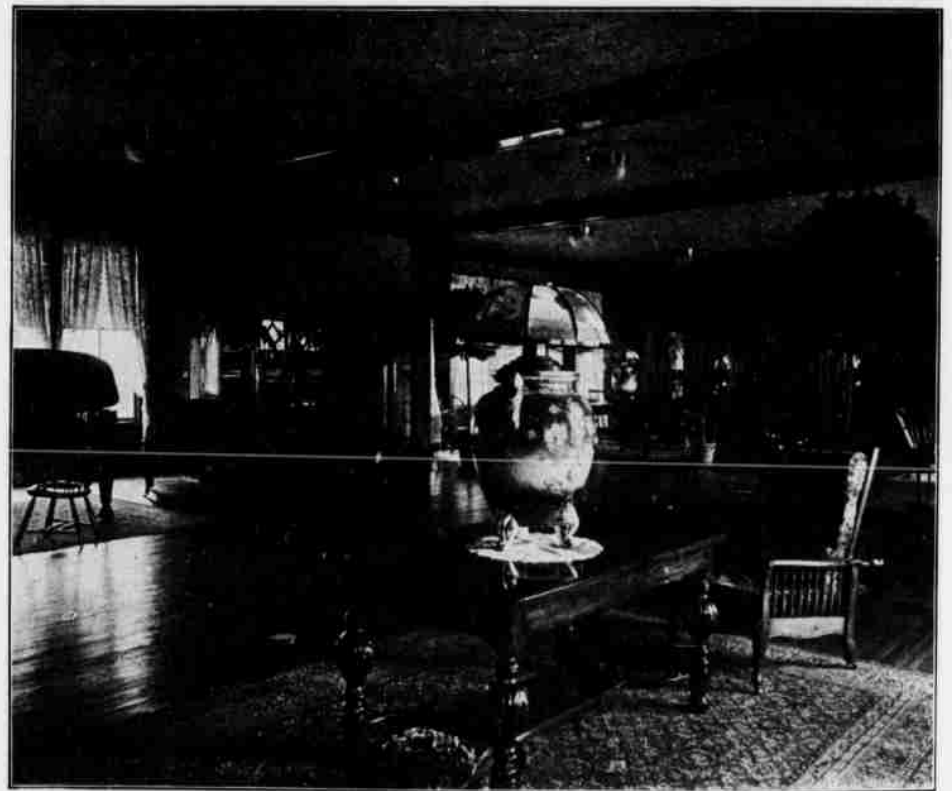
C. L. Becker, Boston, whose handicap was 7, took the Class A cup with 78, with G. Lee Knight, Philadelphia (12), second in 80.

The Class B cup went to J. E. Kellogg, Fitchburg, Mass., with 85 net, playing with a handicap of 14. M. D. Rae,

M. A. Griffith, Philadelphia, 56 52 108 18 90

**CLASS B.**

J. E. Kellogg, Fitchburg, Mass.,	53	46	99	14	85
Marion D. Rae, Netherwood, N. Y.,	52	47	99	10	89
J. G. Anderson, Pittsburg,	46	52	98	6	92
H. W. Ormsbee, Brooklyn,	50	48	98	6	92
G. P. Stewart, Reading, Pa.,	52	53	105	12	93
F. B. McFeely, Latrobe, Pa.,	53	49	102	9	93
H. P. Talcott, New Rochelle, N. Y.,	50	53	103	8	95
J. E. Lambie, Jamaica, L. I.,	54	59	113	14	99
C. A. Taft, Whitinsville, Mass.,	54	57	111	10	101
W. A. Johnston, Latrobe, Pa.,	55	64	119	18	101
Miss E. Check, E. Orange, N. J.,	56	64	120	18	102
F. A. King, Northboro, Mass.,	49	61	110	6	104
Mrs. G. H. Converse, Boston,	61	59	120	15	105
G. H. Converse, Boston,	59	65	124	16	108
Mrs. M. B. Byrnes, New York,	61	66	127	14	113
Mrs. G. Lee Knight, Philadelphia,	70	64	134	18	116



THE SOCIAL HALL OF THE CAROLINA.

Netherwood, N. Y., (10), was second with 89.

The best gross scores were 85 for Becker, 86 for M. K. Waters, New York, and 88 for Parke Wright, Buffalo.

The scores in detail follow:

**CLASS A.**

C. L. Becker, New York,	44	41	85	7	78
G. Lee Knight, Philadelphia,	45	47	92	12	80
M. K. Waters, New York,	43	43	86	5	81
J. R. Marshall, Hackensack, N. J.,	51	49	99	15	84
J. N. Anderson, Jr., Pittsburg,	53	52	105	18	87
Parke Wright, Buffalo,	40	48	88	0	88
M. B. Byrnes, New York,	56	50	106	18	88
H. S. Gordon, New York,	56	61	117	18	90
A. J. Wellington, Boston,	No card				

**TIN WHISTLES SECOND.**

**Creamer Beats Priest in Match Play Handicap.**

The Tin Whistles match play handicap, the second event in the winter's program, developed an interesting contest and resulted in a victory in the final round for A. I. Creamer (14), over H. W. Priest (12), three up and two to play.

The full summary of the match play rounds follows:

**FIRST ROUND**—A. I. Creamer, North Conway, N. H., (14), beat H. W. Ormsbee, Brooklyn, (18), 3 and 1; M. B. Byrnes, New York, (18), beat T. B. Cotter, Winchester, Mass., (22), 2 up; G. R. Wallace, Brooklyn, (20), beat A. G. Warren, Rochester, N. Y., (25), 2 up and 1; H. W. Priest, Swampscott, Mass., (12), beat H. S. Gordon, New York, (18), 3 and 2.

**SEMI-FINALS**—Creamer beat Byrnes 1 up (22 holes); Priest beat Wallace 6 and 5.

**FINALS**—Creamer beat Priest 3 and 2.