

STRANGELY FASCINATING

Pistol Target Practise Holds its Numerous Devotees Captive.

New Departures Feature of Local Club's Season Program -- Percentage Medals Offered.

STRANGELY fascinating is pistol and revolver target practise, young and old, men and women, novice and expert, all find increasing pleasure and satisfaction in it. By continually leaving something to be achieved, of which one gets a nearer view with proficiency, it holds its devotees captive, and with accomplishment, there comes the satisfaction of having acquired something distinctly practical and useful. It fits in well with other sports, affording entertainment for a few minutes or a few hours, it is not strenuous, and best of all, it keeps one pleasantly and profitably occupied in the air and sunshine.

This sport is now one of the most popular of the outdoor recreations here and is claiming increased numbers each year, conspicuous among whom are those who "never could shoot a pistol" or who were "afraid to try." It is difficult and at the same time not so hard when you know how, and the stages of advancement are rapid for those who devote a moderate amount of time and thought to it in the right way.

The local target butts are admirably located, and one has only to visit them and note where thousands of bullets have disappeared in the wood to judge, somewhat, of the number of shots fired in the course of a season.

Systematic practise appeals to the enthusiasts most, but a series of tournaments of a varied nature and at different targets, are an attractive feature of the local Club's season program. Prominent among these are weekly handicap tournaments in which the novice has a long lead over the expert, points being allotted, which, added to the gross or actual score, make the net score, just as do strokes given in handicap golf. There are also many events with prizes for both the best gross and best net scores, shoots with various teams throughout the country, and several stated tournaments for handsome trophies offered by the Management, and including a Club Championship (scratch) event in which gold medals are offered to both men and women.

Another feature of exceptional interest is the annual United States Revolver Association winter State Championship event, held here each spring, in which silver and bronze first and second medals are offered by the National Association.

Along the same line a new feature of special interest is to be introduced during the present season, whereby members of the local club may compete for percentage medals offered by the National Association, and which will without question, give new and greater impetus to the pastime.

These medals are offered for ten attest-

ed targets which need not, necessarily, be consecutive, for scores counting from eighty and upwards, as follows:

Bronze medal, ten targets counting 80 or better.

Bronze and silver medal, ten targets counting 85 or better.

Bronze and gold medal, ten targets counting 90 or better.

Silver and gold medal, ten targets counting 93 or better.

Gold medal (the highest gift of the National Association) for ten targets counting 95 or better.

The conditions specify that all shooting must be done on the range of the local club in the presence of at least two witnesses, one of whom must be an officer, who must certify to the targets over his signature.

The targets are the regular Standard American, with the bulls-eye 8 inches in diameter (containing 10, 9 and 8 rings), for the fifty yards, and the same target reduced for twenty yards, with a bulls-eye 2 3-4 inches in diameter. These targets *numbered* and *signed*, will be issued on application to members of the local club, by the Secretary, Herbert L. Jillson.

The arms include any revolver not to exceed 2 3-4 pounds in weight; maximum length of barrel, exclusive of cylinder, 8 inches; trigger pull not less than 2 1-2 pounds; sights open, in front of hammer, and not over ten inches apart; any ammunition.

Any pistol, length of barrel and distance between sights not to exceed ten inches; trigger pull not less than 2 pounds; open sights; any ammunition.

Military revolvers with plain, open, fixed sights, and trigger pull not less than 4 pounds, will be allowed 5 points on a string.

The purpose in offering these medals is to enable the National Association to ascertain the degree of skill of various shooters throughout the country, in order that they may be rated, listed and available for important National or International contests.

The officers of the local club are delighted at the special courtesy shown them by the National Association and look forward to brisk competition among the members. An illustration of the medal offered appears below.

Mrs. Stevick Here.

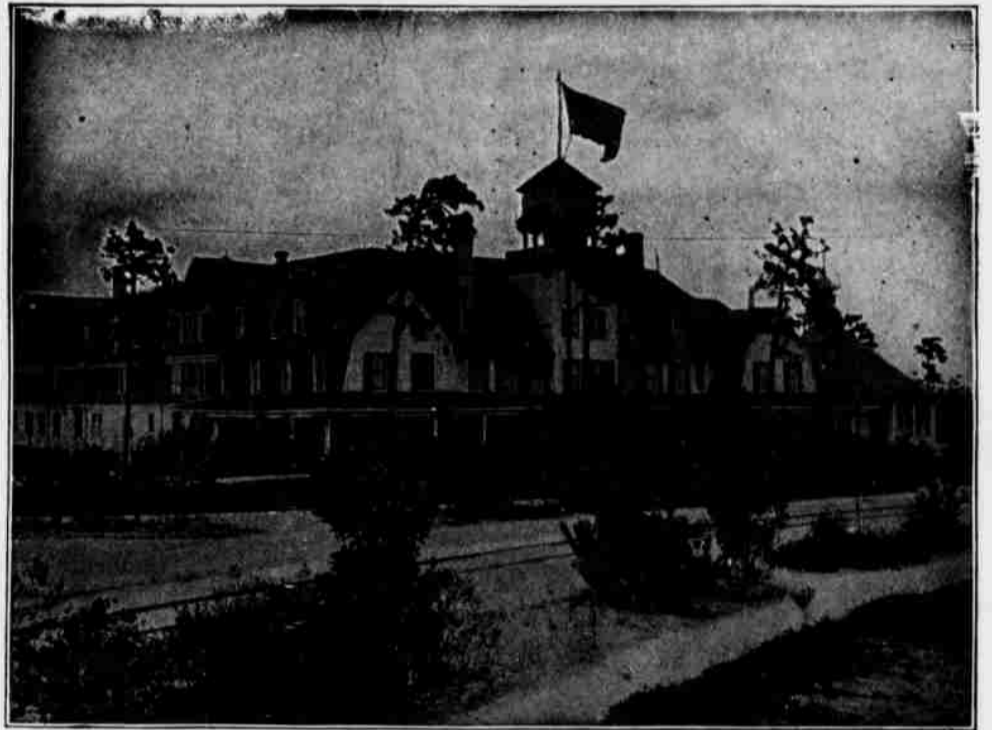
Mrs. C. C. Stevick, Manicurist and Masseuse, is here for her sixth season.



U. S. R. A. PERCENTAGE MEDAL.

THE HOLLY INN

PINEHURST, N. C.



The Holly Inn is one of the most attractive hotels in the South. Since it was built in 1895, it has been necessary to enlarge it several times to meet the constantly increasing demand. The interior is elegant, cheerful and tasteful. No modern convenience is lacking. There are bath rooms, electric lights, steam heat and open fireplaces. There is a call bell in every room, and all beds are furnished with best hair mattresses. An orchestra furnishes fine concerts daily, and also provides for dancing. The cuisine is unsurpassed. The waitresses are all white girls from the North. Rooms for billiards and other games are provided in the hotel.

A. I. CREAMER, Manager.



The Harvard

PINEHURST, N. C.

This recently completed hotel is modern in every respect, having electric lights, steam heat and several suites with bath, and with its cottage annex and large dining room, accommodates seventy-five guests.

The Cuisine is in charge of a competent chef, and the table service is guaranteed satisfactory.

F. H. ABBOTT, Manager.

Hotels Gilford - Benbow,

GREENSBORO, N. C.

An ideal point for tourists to spend the night en route to and from Pinehurst. Two of the most complete and best equipped hotels in the south, on the main line of the Southern Railway, and a thirty-minutes drive from the historic Guilford Battle Ground of Revolutionary fame.

Greensboro is a beautiful old southern city, has fine Opera House, wide streets, and is surrounded by picturesque country through which run macadamized roads. All Pullmans via Southern Railway for Pinehurst and the south stop within two blocks of these hotels.

GOLF LINKS.

COBB & FRY.

SHOOTING PRESERVES.

THE UPLANDS

BETHLEHEM, N. H.

F. H. ABBOTT,

Proprietor.

Address until May 1st, PINEHURST, N. C.