

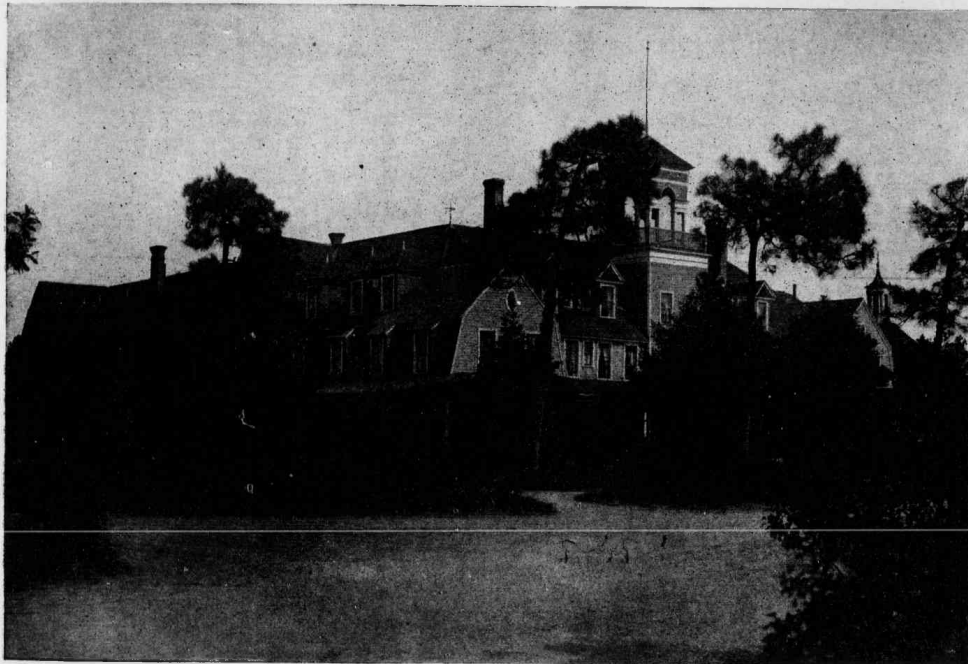
The Carolina

**Largest and Best Appointed
Hotel in The Carolinas**

Private Baths, Elevators, Tele-
phones in all Rooms, Sleeping
Porches. Every possible conven-
ience.

OPEN
NOVEMBER 10th to MAY 1st

H. W. PRIEST, Mgr.,
PINEHURST, N. C.



The Holly Inn

The Holly Inn is one of the most
comfortable, attractive and pop-
ular hotels in the South. With
its annexes it accommodates 200
guests.

Convenient to Country Club.

E. G. FITZGERALD, Mgr.,
PINEHURST, N. C.



The Berkshire

**A Modern Hotel. Delightfully
Located. All Conveniences.**

Bath Rooms, Steam Heat, Open
Fires, Electric Lights, Sanitary
Pumbing

J. M. ROBINSON, Mgr.
PINEHURST, N. C.