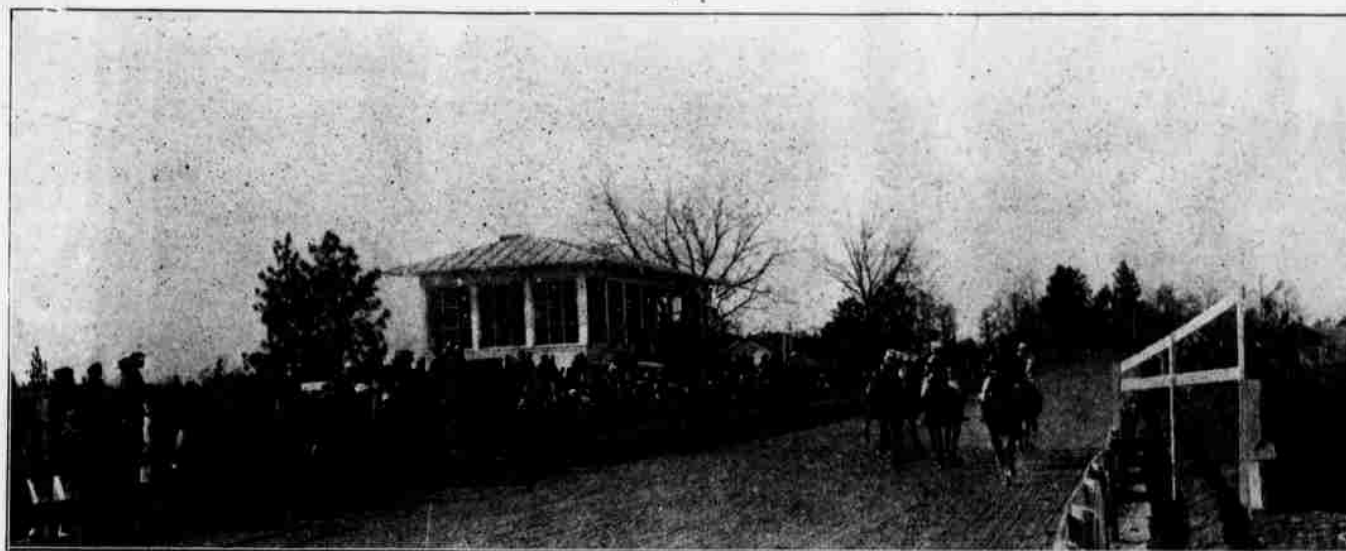


Racing Season Opens



Thanks- giving Day

WITH the best opening day program ever arranged for a meeting here, the racing season at Pinehurst will get under way on Thanksgiving Day under conditions brighter than ever, and from the extensive enlargements, improvements and additions being made at the local Jockey Club course, it looks as if the sport will be conducted on a much larger scale than ever before. A number of formidable stables are already on hand and a good many more that are now campaigning in Maryland will come down the latter part of this month when racing on the northern tracks will come to a close for the season.

This popular pastime was inaugurated at Pinehurst five years ago with a four-furlong track and with only local horses to draw from, but the sport grew so fast in popularity and attracted so many of the larger racing establishments from the big tracks that it was necessary to enlarge the entire plant so as to provide necessary quarters for the horsemen and their charges. These improvements have kept up from year to year until now the home of the Pinehurst Jockey Club is probably the most complete racing plant in the South outside the major circuits. The need of a larger track was soon manifest. Therefore, it was determined to use the present four-furlong track for harness races exclusively and a seven-furlong track for the runners was built around the old one. This new track is of standard width and is only 200 yards less in distance around than the Eastern and Kentucky tracks. It was constructed with a particular view to avoiding sharp turns, and the run down the long home-stretch offers a sprint equal to any of the milers. A straight-away is now being considered for the starting point of the races which will eliminate all possibility of crowding in the scramble to get to the first turn, and will be particularly desirable for the short five and six furlong dashes.

Over in the infield is a steeplechase course with four hurdles. It is laid out so as to have the starting point over in the lower left hand corner of the field, thence diagonally across to the first jump at the upper turn, then three times around, making twelve jumps in all, and finishing in front of the stand. This provides a chase of approximately two miles and brings together some of the best fencers in training, and affords many interesting thrills to the thousands

of race-lovers who pack the stands and lawns at the local course every race day.

All summer and fall the management has had a large force of workmen on the grounds building new stables, arranging the parking space so as to provide more room, beautifying the grounds and shrubbery and rolling and harrowing the track so as to have it in the best possible condition when the bugle calls the horses to the post for the first race on Thanksgiving Day. The turf and hedges on the steeplechase course are green and fresh, the stands and fences whitened, and with the red flags flying from the standards marking the course the entire plant presents a beautiful appearance.

Negotiations are being had with some of the largest stables in the country to winter at Pinehurst. It is practically

bears the distinction of having won America's greatest race classic — the Kentucky Derby.

Others who will be on hand for the opening day are F. E. Hyde with a dozen or more head, W. P. Wickert with three, G. Nibbs with half a dozen, Grant Page with a large stable and C. L. Whiting with a number of horses of the first flight. In addition to these and others that are to come, the old favorites which have provided good racing here for several years will again be on hand. Incidentally, it may be said that every one of these old stand-bys have given a good account of themselves on the big tracks this past summer. Practically every one has been a winner over formidable opposition.

This is particularly true of the Nibbs

(Continued from Page 6)

and just south of this Mr. A. B. Sally, of the firm of Packard & Sally, building contractors, has built a home which, though not quite complete, he is already occupying.

Last spring the Pinehurst Plateau Company bought the Marlborough, and moved it from its original location opposite the Clover Leaf, to the lot next to Mr. Sally's new home. Here it is being entirely reconstructed, and when complete, will have three very pleasant apartments.

On Palmetto Road, facing number two golf course, Messrs. R. S. Tufts and C. P. Mason are building a two-story house, which when completed, will be the equal of any in the village. It is of the New England colonial type and will have seven rooms and three baths. It will be thoroughly up-to-date, with every modern appurtenance. It is named Fairway and is for rent and for sale.

Facing Village Green, East Road, next to Dr. J. S. Brown's bungalow, Mr. J. V. Hurd's new winter home is rapidly nearing completion. This will be something entirely different from any other house in the village. It is of English type, with hewn timbers, and its harmonious lines and particular fitness for its location make it a most pleasing addition to an already beautiful row of houses facing the Village Green.

Beyond the Clover Leaf, on the opposite side of Midland Road, Messrs. Tufts, O'Brien and Ross are building a house, which it is understood is to be the first of a group to be erected in that vicinity by this new firm. These houses will be complete in every detail, and will be for sale.

Directly opposite the Marlborough Mr. Tufts is building another house like the one just started next to Mr. Magoon's. This will also be for rent.

Out on the Dundee Road, beyond Mr. Fuller Currie's, Mr. George Wood finished a home early in the summer, which he is occupying with his family.

This completes the list at this moment, but several others are planned and probably before this is in print at least three or four more will have been started.

Winter visitors used frequently to ask what the summer residents found to do here after the winter season closed, but nowadays all they have to do is to look around upon their return and the question answers itself.



Overflow gathering on steps of Grands and at Races

certain that A. J. Joyner will come with a division of the J. E. Widener string including his good stake horse Naturalist. Commander J. K. L. Ross is considering sending a division of his extensive string, as are several other big stables.

Nat Hurd is on hand with some new material that he picked up on the Maryland tracks this fall, and includes some runners and cross-country performers of prominence. He has retired his favorite and faithful old jumper, Little Horn. She has been bred to Meridian, who

and Whiting stables. They have been campaigning on the big tracks in Canada and Maryland all season and have proved good bread winners for their owners, while Mr. Hyde chose the Grand Circuit for his big band of trotters which came to a close at Atlanta the last of October.

Mr. Tufts has a dozen or more polo ponies in his barn ready to meet any newcomers. Altogether the coming racing season at Pinehurst promises to be a banner one and will afford its patrons some excellent sport.