

# The PINEHURST OUTLOOK



VOL. XXV.

NOVEMBER 1921

NO. 1

## STRIKING EXTENSION OF DEVELOPMENT WORK

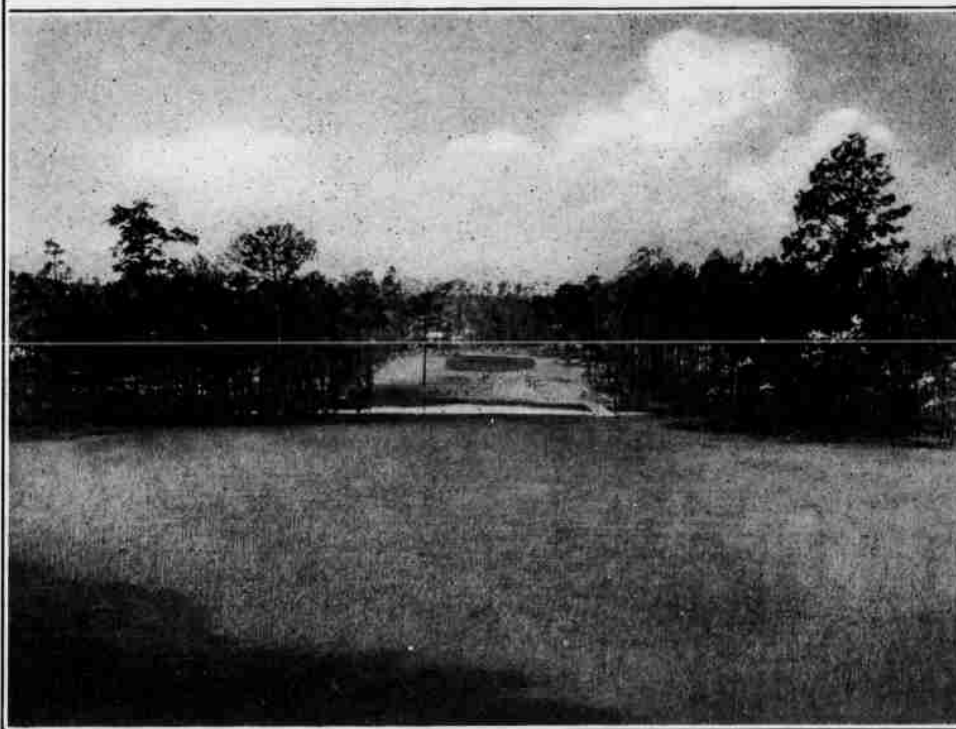
### Marked Expansion During the Year Past

BION H. BUTLER

THE season opening now at Pinehurst sees the most pronounced development of the surrounding country that has taken place in any one year since Moore county aspired to be a winter resort or an industrial possibility, and the prospects in sight tell that the year about to begin will outclass the one closing, as well as the others that are gone. It may come as a surprise to many, but it is likely that the community of which Pinehurst is a center, is advancing so rapidly in each of two lines that it is hard to say which is making the more significant progress, the industrial or social phase. Both show an investment of well up toward a million dollars for the closing year. Both point to things on big planes for the coming year, as an examination will disclose.

No one will question that the prominent feature of the year's work has taken place over at Mid-Pines country club. There the first unit of the fine new club house has been so nearly completed that the building will be ready for use in January, adding to the attractions of the Pinehurst season a supplement that will materially broaden the facilities for caring for large numbers of patrons who will make use of the additional golf room and housing conveniences the new club provides. Mid-Pines, a creation by Donald J. Ross, the golf architect, with its club house, golf course, roads, improvements of various sorts, and the private improvement in the vicinity represents an outlay of half a million dollars, with a following outlay for next year of another vast sum, for Knollwood, of which Mid-Pines is the first manifestation, has only commenced. Mid-Pines is the beginning of a great project embracing over 5,000 acres now in the hands of Warren S. Manning, the landscape and community designer, which can not be outlined because he has not yet sufficiently developed his scheme to reduce it to figures and words. Preliminary survey sheets show that it is bigger than most of us can realize. Knollwood is shaping for a place unlike anything else in existence, and one that will utilize to the best advantage the incomparable climate of North Carolina's Sandhills country and its proximity to the mass of population of the United States which is within a day's ride of the Knollwood location.

However, the future is for tomorrow. The present is of today. The Mid-Pines



Upper: Eighteenth Green at Mid-Pines showing part of Club House in the distance.

Lower: The Fifth Green, requiring a second shot over the pond.

club house is a creation by Aymar Embury is one of the few large buildings in rural 11, of New York, a young man whose North Carolina planned to thoroughly fit architectural work is giving the Sandhills the environment in type, form, color and a distinctive atmosphere. The club house location. When the entire building is is an original theme, worked out to completed it will be ranked among the harmonize with the setting of the pine interesting structures of the South. groves on the surrounding ridges, and

(Continued on Page 14)

THE PINEHURST OUTLOOK is published weekly from November to May by The Outlook Publishing Co., Pinehurst, N. C.

O. H. PEACOCK  
Editor

Subscription Price, \$2.00.

Subscriptions will be continued on expiration unless the editor receives notice to the contrary.

Entered as second class matter at the post office at Pinehurst, N. C.

## NEW MID-PINES CLUB NEARING COMPLETION

### Ready for Occupancy January 1

THE new Mid-Pines Golf Club at Knollwood, which was the subject of wide-spread discussion throughout last season, is now a reality, and with one of its two 18-hole golf courses will be thrown open for occupancy early in January. All that remains for the completion of the building are the finishing touches and furnishings which will be completed in every detail between now and January first.

The club is a beauty and one of the model institutions of its kind in the country. It is situated among the tall pines just below the crest of the ridge three miles out the new highway to Southern Pines, and commands a beautiful view of the surrounding country and vistas of the golf course fairways. It is a brick veneer structure approximately 500 feet long and three stories high, with 65 residential rooms, each with private bath, main and private dining rooms, ladies' parlor, two large fire-proof locker rooms, one for men and one for women with something over 100 lockers in each, shower baths, card and billiard rooms, an enormous sun room, and another large room 28x70 which will be used as an amusement hall for such diversion as may be desired. But the glory of the house is the spacious living room with its immense open fire-place. This room is 36x86 feet, faces south and east and overlooks an open terrace. Arthur E. Richardson, formerly of the Carolina at Pinehurst, will manage the club this season.

The 18-hole golf course has been finished. It is now in excellent playing condition, and will be thrown open for play when the club is opened early in January.

The establishment of the club at Knollwood has exerted a marked influence on Pinehurst development plans. Mr. James Barber and Judge W. A. Way have already built winter homes close to the club, and Mr. Leonard Tufts has work well under way on a residential property of his own that will represent an outlay of close to \$100,000. It is situated just outside of Pinehurst on the boulevard leading to Knollwood and Southern Pines and will be used as his own home. Residential plots are being rapidly taken up all along the boulevard and in all probability the three resorts will soon be connected by an unbroken stretch of residential properties, and together will comprise the greatest winter play-ground in the world.