

The PINEHURST OUTLOOK



VOL. XXV.

MID-WINTER GOLF NUMBER

NO. 6

R. MURRAY PURVES WINS ADVERTISERS' TOURNEY

Defeats M. E. Meigs in Championship Finals

BY R. E. HARLOW

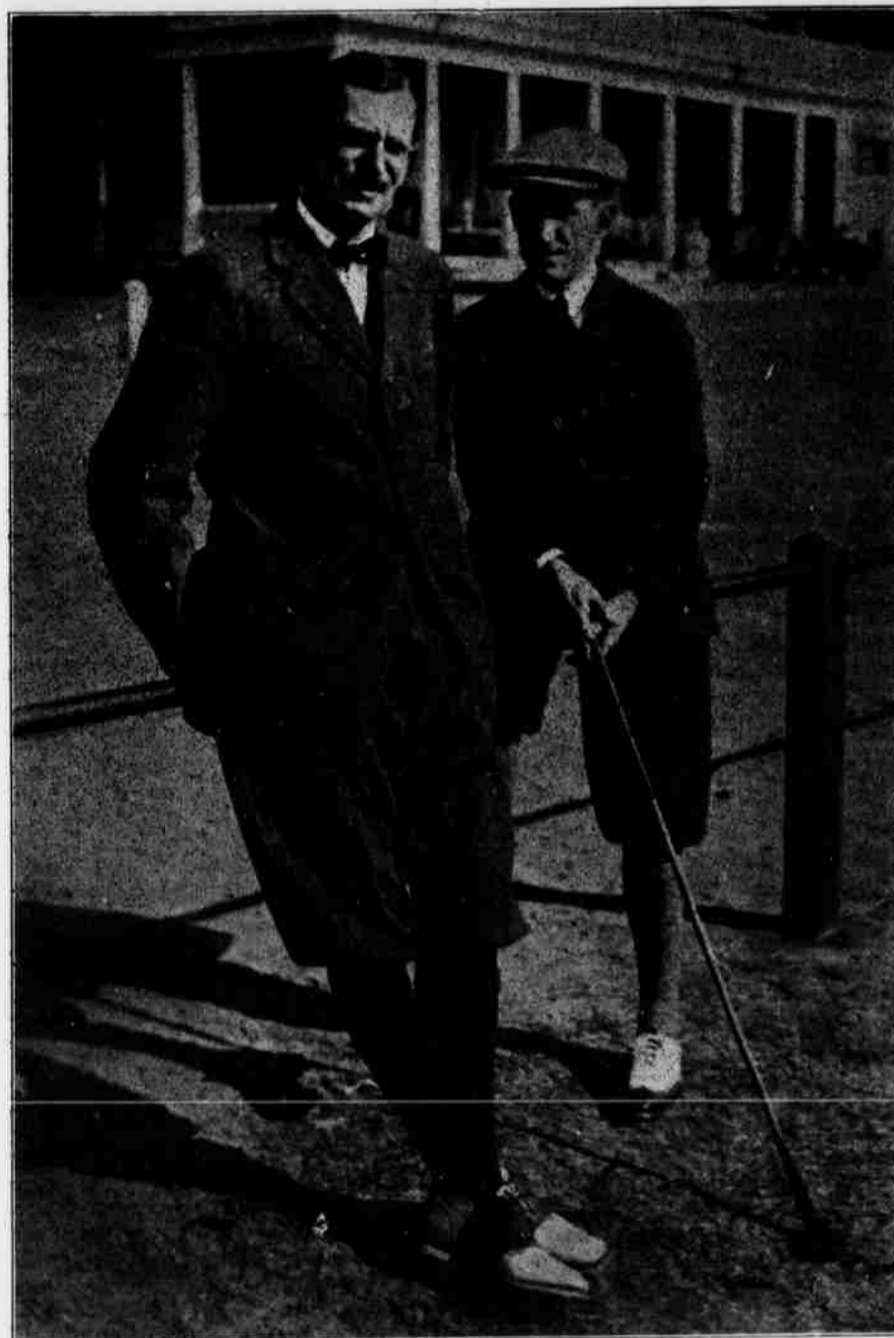
R. Murray Purves of the Woodland Golf Club of Boston, was the dominant figure in a week's golfing carnival which members of the Winter Golf League of Advertising Interests enjoyed on Pinehurst links during the week past. Purves won this event last year, and just at the present time there does not appear to be another golfer in the membership of the League who is capable of beating this player from the home club of Francis Ouimet and Jesse Guilford, the national champion.

Purves indicated in the opening event, a preliminary 18-hole medal play tournament held on Saturday which he won by a comfortable margin, that members of the association who hoped to cope with him in the championship would need to shoot below the 80 mark in order to have a chance of beating him. It turned out that none of the golfers who qualified in the first flight were able to do this, and Purves won the championship with perfect ease.

On Monday the qualifying round was played and Purves won the low gross with a card of 37-42-79, but equal congratulations were given James Barber, for Mr. Barber won the low net with a score of 44-46-90-23-68. Mr. Barber has played hundreds of rounds over the championship course at Pinehurst, but the 90 he played in the qualifying round of the Advertisers' tournament was his best effort. His gross score of 90 was bettered by only three golfers.

The Advertisers came to Pinehurst for the purpose of playing competitive golf and have an arrangement for conducting their tournament which gives every starter an opportunity to play in the big event for at least three days. The qualifying round divides the field into divisions of 32, the first round of match play into winning and beaten sixteens, and the second round of match play into winning and beaten eights. It requires a full day to play the qualifying round and the first and second rounds are played on the second day. The third round is contested on the third day and players who are defeated after the field has been reduced to the four winners in each eight still have other events to keep up their enthusiasm. In order to make the competition as equal as possible all players except those in the championship divisions play from handicaps.

(Continued on Page 16)



John D. Chapman and Donald Parson. Members of Pinehurst's Cottage Colony, who have signified their intention to enter the Amateur Championship at Brookline this summer

COURSE AT MID-PINES A THOROUGH TEST OF GOLF

Golfers who have been making quiet visits to the new Mid-Pines Country Club at Knollwood and have not been saying much about their scores there, will have to face the music on Wednesday, January 25, when the course will be used for the first time for tournament play, the event being a 36-hole medal play tournament with handicaps, open to all amateurs. It will be interesting to watch the scoreboard. In fact, it is likely to be illuminating. We shall see how good some of us are when forced to return a card after battling over a course that tests length and direction as well as the use of golfing brains.

There is no question that Mid-Pines is the most difficult course in the Sandhills country. Donald Ross meant it to be just that way, and succeeded, yet he has built it in such a way that many of the holes are splendid types of par four and bogey five holes. Parker W. Whittemore says that he finds it fully as difficult as Myopia. Mr. Whittemore holds the present amateur record, a fine 77.

Mid-Pines holds a unique place in the Sandhills country golf, for it is the only private club in the Pinehurst district and was organized and built by a number of members of the winter colony of this section who desire a course of their own, upon which they can conduct tournaments and have a clubhouse for their parties. It is but three miles from Pinehurst, so the members will not be denied the larger opportunity for competition afforded by the many tournaments at Pinehurst.

Mr. Ross realized that many of the golfers who are to use Mid-Pines are men with high handicaps and was forced to use all his art to build the links suitable for them and yet testing enough for the crack amateurs and professionals who make regular visits to Pinehurst and are eager to play a course that will bring out all their shots.

To meet this double need Mr. Ross has built the course "within a course." Many of the holes are the finest types of a hole within a hole. One of these is the fifth, 420 yards. Long hitters will be far enough out so that they can carry a wide water hazard which guards the direct line to the pin. When the wind is against them the long hitters will need a wooden club for the second shot, but in ordinary conditions a jigger or midiron will be enough.

(Continued on Page 16)

THE PINEHURST CHAPEL SUNDAY SERVICES

Holy Communion 9:00 A. M.
(except 1st Sunday in month)
Children's Service 10:00 A. M.
Morning Service and Sermon 11:00 A. M.
Holy Communion immediately after
Morning Service on First Sunday in each
Month.

ROMAN CATHOLIC SERVICES

Early Mass 6:15 A. M.
Second Mass 10:30 A. M.
When visiting priest is at Pinehurst an
8 o'clock mass is held.

THE PINEHURST OUTLOOK is published weekly from November to May by The Outlook Publishing Co., Pinehurst, N. C.

O. H. PEACOCK
Editor

Subscription Price, \$2.00.

Ten cents a copy.

Subscriptions will be continued on expiration unless the editor receives notice to the contrary.

Entered as second class matter at the post office at Pinehurst, N. C.