

and Kirk's Ashantee Dominant, a brace of dogs owned by Harry D. Kirkover, which have been placed some twenty times. John Dunn, of Baltimore, is bringing down Carolina Frank Bell to run in the Derbies. This dog was placed five times in as many starts last year in Puppy stakes, and she has a great future before her.

Dr. E. M. Wilder is sending from Georgia Great Island Matchless, a many times placed English setter. There will be more than thirty dogs in the Derby stake and as many in the Free-for-All, which means a full week for the Field Trial men.

Mrs. Barr leads at Range

MRS. LAURENCE BARR, who won the Rifle shoot last week, led the field again this week with a high target of 146 out of a possible 150. This is the highest mark made by a woman shooter so far this season and is very near the record for these events.

Mrs. D. M. Barclay finished second in the field with a score of 138, and was followed by Miss Marion Lewis, at 137. Other good scores during the week were Miss Elizabeth Blancke and Miss Katherine Lewis, who tied at 128.

Girl Scouts of Southern Pines

TWO years ago an entertainment took place in Southern Pines that created considerable interest. It was given at Christmas time by the Girl Scouts, and consisted of a pantomime, Bible tableaux and music. A common-place affair, one would say, perhaps—the kind of things always given at Christmas time by some group of children and attended by the usual gathering of devoted parents.

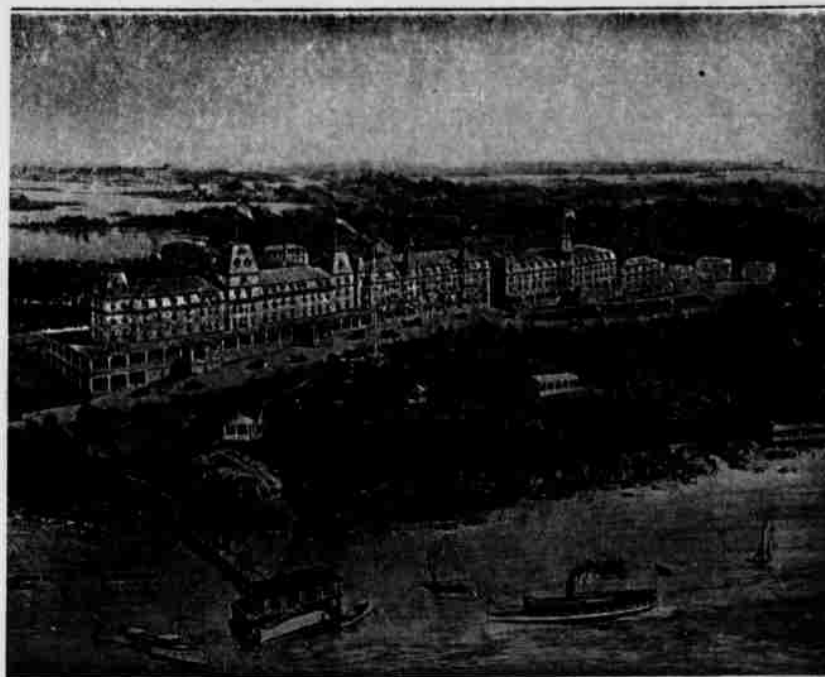
On the contrary the entertainment was of quite a different character from the usual thing. It was given in the Princess Theater, with special lighting, a special stage setting and special music. Great care was taken with the costumes and posing, the aim being to make these living pictures as much as possible like the paintings of the old Italian Masters. The tableau of The Annunciation was a perfect reproduction of the beautiful painting by Fra Angelico, even to the framing of the triptiche. The posing and coloring in the Adoration tableau was taken from a Raphael. The musical programme was also carefully composed. It consisted in great part of the old carols which were sung, during the showing of the tableau by the Scouts who were not in the pictures. There were also soprano solos, a quartette, and violin and organ numbers.

These different features were combined with study and care that resulted in a performance of rare beauty. To such an extent that there has been a general demand for a repetition of the entertainment every Christmas.

Mrs. Wilkens and Mr. Yeomans had been the solosists for the last two years, but they were unable to take part this Christmas. Mr. Monnegan, of the Carolina orchestra, took Mr. Yeoman's place, while the soprano arias were beautifully sung by Mrs. Webber. Mr. Charles Yeomans assisted in the duets and Mr. Bickford played the carols.

The date was December 27th. Two performances were given: a matinee for children and the regular evening performance. Unfortunately the weather was bad, and the rain and fog kept away many who had been in hopes of attending. However, as most of them had bought tickets in advance, the proceeds were not materially diminished. These proceeds are given to the Hoover Fund for European Children.

The Girl Scouts work hard over their entertainment and they are especially glad to do so in order that they may, at Christmas time, do something to help their brothers and sisters in the destitute countries of Europe.



The WENTWORTH by the SEA

THREE MILES FROM PORTSMOUTH, N. H.

- ¶ In a setting of unusual beauty and exposure offers to a discriminating public attractions unsurpassed by any resort hotel in America.
- ¶ A new salt water swimming pool built on the ocean front with modern Bath House and a large Entertainment Building are added features this season.
- ¶ Improved Golf Course laid out by Donald Ross, "Boston Symphony Ensemble" concert orchestra, and numerous other attractions make this an ideal summer home.

Illustrated and descriptive booklet on request.

WENTWORTH HOTEL CO.

J. P. TILTON, Managing Director 111 Summer St., BOSTON, MASS.

\$400,000 Is a fair sum of money

¶ Dropped into the Sandhills by one banking concern for the use of the farmers means that a decided stimulus will be given farm and orchard in this vicinity.

¶ That money is on a long term, thirty years or so, which is another big feature.

Knollwood Village

Is in the Heart of the Sandhills

\$400,000 will go to developing the region round about Knollwood, and Knollwood will be \$400,000 more attractive when the money is spent for the improvements it will create in the rural neighborhood.

Always something coming up to give the Sandhills another boost.

A. S. NEWCOMB & CO.,

Selling Agents for Knollwood

PINEHURST, N. C.