

- | | | |
|-----------------|----------------------|---------------------|
| Morgan, L. H. | Robb, F. N. | Tatnall, C. G. |
| Moriarty, J. J. | Rufo, H. N. | Thayer, H. B. |
| Murray, H. H. | Russell, E. B. | Thomas, H. |
| McCorkle, G. K. | Sargent, W. D. | Thompson, J. C. |
| Oathcut, V. | Saring, E. M. (Miss) | Van Meter, J. L. R. |
| Ogden, P. P. | Sedam, M. D. | Wadham, J. P. |
| Oswald, C. L. | Sherwood, W. R. | Walker, R. E. |
| Portz, F. E. | Stannard, A. C. | Waterson, K. W. |
| Prescott, H. M. | Stannard, R. S. | White, R. B. |
| Putnam, John | Steelman, R. A. | Wickenden, W. E. |
| Raabe, E. G. | Sullivan, M. R. | Williams, T. W. |
| Raynor, D. S. | Swinney, C. R. | Wolf, R. F. |
| Reid, F. H. | Swords, T. F. | Woods, C. R. |
| Remon, J. A. | Tabor, S. L. | Yelton, F. H. |

CAROLINA THEATRE

THE BEST IN MOTION PICTURES

Program changes Mondays, Wednesdays and Fridays

SEABOARD AIR LINE RAILWAY

Through Pullman Sleeping Car between New York, Southern Pines and Pinehurst. Effective November 1st:

READ DOWN	READ UP
3:40 P.M. Lv.....New York	Ar. 2:40 P. M
6:19 A.M.Southern Pines	9:44 P. M.
7:15 A.M. Ar.....Pinehurst	Lv. 7:20 P. M.

Above schedule in effect to May 15th

ALL-STEEL, VESTIBULED, ELECTRICAL-LIGHTED TRAIN
DINING CAR SERVICE UNEXCELLED

For rates, schedules and other travel information concerning these popular resorts consult your Ticket Agent or write

JOHN T. WEST
Division Passenger Agent
RALEIGH, N. C.

S. B. MURDOCK
Gen'l E. Passenger Agent
142 W. 42d St., NEW YORK, N. Y.

Briarcliff Lodge

Briarcliff Manor, N. Y.

OPEN MARCH 31ST

"Sir Roger knows my humor and allows me to sit up or go to bed as I please, to have my meals at his own table or in my chamber as I see fit, to sit and say nothing without bidding me be merry."—Addison.

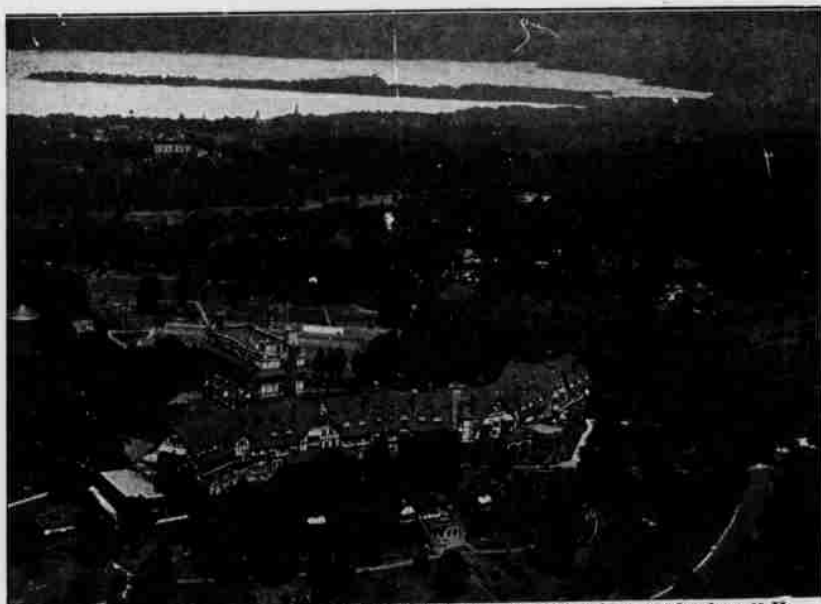
BRIARCLIFF LODGE combines the sociability of club life—the freedom and conveniences of a hotel—the personal comforts of a home. Saddle Horses, Tennis, Golf, Swimming Pool.

CHAUNCEY DEPEW STEELE

There are now 27 sporty holes of golf available to Lodge guests, with Gene Sarazen as professional

New York Office: 342 MADISON AVENUE

Telephone: Murray Hill 9372



Copyright Aerial Photograph by Captain James Suydam, N. Y.

ESTABLISHED 1818

Brooks Brothers,
CLOTHING,
Gentlemen's Furnishing Goods,

MADISON AVENUE COR. FORTY-FOURTH STREET
NEW YORK

Telephone Murray Hill 8800

Clothing Ready made or to
Measure for Spring

- Evening Clothes, Cutaways, Sack Suits
- Sporting Clothes and Light-Weight Overcoats
- English and Domestic Hats and Furnishings
- Boots and Shoes for Dress, Street and Outdoor Sport
- Trunks, Bags and Leather Goods

Send for "Clothes and the Hour"

On returning from a long trip our Ready-made clothes make the replenishment of your wardrobe a quick matter, in person or by mail from your home

BOSTON
TREMONT COR. BOYLSTON

NEWPORT
220 BELLEVUE AVENUE



The BELLEVUE-STRATFORD

Philadelphia, Pa.

A GREAT hotel conducted with one purpose; to serve surpassingly well.

The Bellevue-Stratford is pleased when you arrive and shows it by making every hour of your stay pleasant.

Attention to your preferences; prompt fulfillment of requests; satisfying comfort and good service in your private apartments. Life and entertainment, when you seek it, in the public rooms. Food that is always excellent—and everywhere luxuries that only a hotel such as The Bellevue can furnish.

A visit to Philadelphia suggests only one hotel.

Broad and Walnut Streets, Philadelphia, Pa.
L. M. Boomer, President James P. A. O'Connor, Managing Director

The Waldorf-Astoria in New York and The New Willard in Washington, D. C., are under the same management.