

## BANK of PINEHURST PINEHURST, N. C.

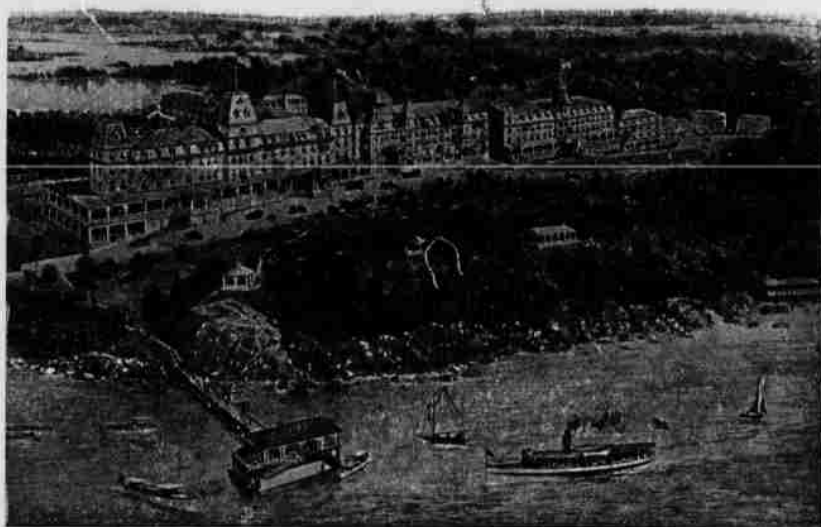
❑ Winter visitors to Pinehurst and the community are invited to avail themselves of the facilities of the Bank of Pinehurst.

❑ Here is a bank established to care for the wide variations of business that the folks who come to Pinehurst will meet. Deposits, collections, market information, transfers or money, accounting work, notary work, execution of documents, safe deposit—anything that you have been accustomed to expect from your bankers at home.

❑ The Bank of Pinehurst grew from the needs of the people for such conveniences, and has been provided for their accommodation.

*Make our safety vaults your  
custodian of valuables and our  
offices your business center dur-  
ing your residence at Pinehurst.*

## THE BANK OF PINEHURST PINEHURST, N. C.



## The WENTWORTH by the SEA

Season: MID-JUNE TO MID-SEPTEMBER

Three Miles from Portsmouth, N. H.

❑ In a setting of unusual beauty and exposure offers to a discriminating public attractions unsurpassed by any resort hotel in America.

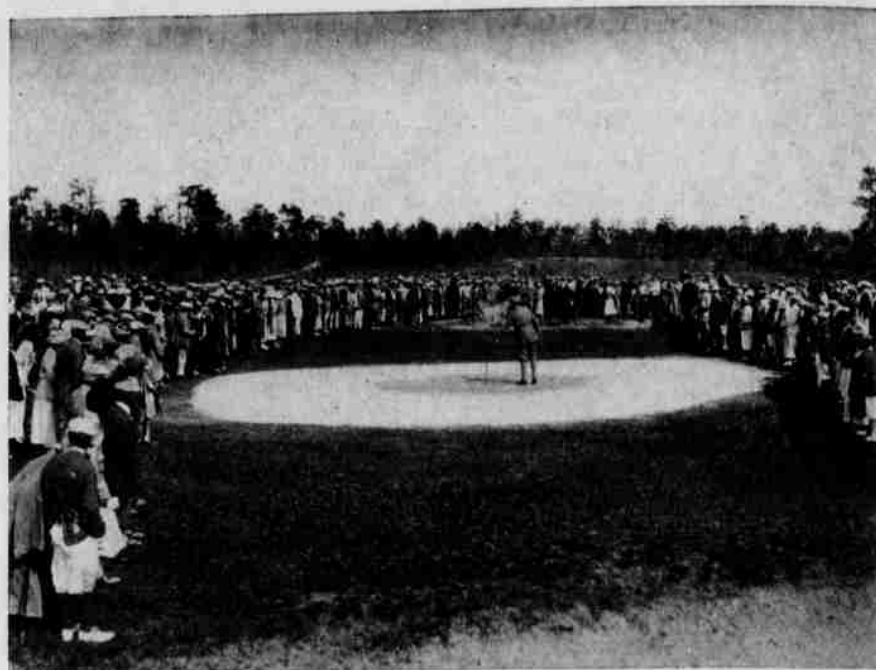
❑ A new salt water swimming pool built on the ocean front with modern Bath House and a large Entertainment Building are added features this season.

❑ Improved Golf Course laid out by Donald Ross, "Boston Symphony Ensemble" concert orchestra, and numerous other attractions make this an ideal summer home.

*Illustrated and descriptive  
booklet on request.*

J. P. TILTON  
Managing Director

WENTWORTH HOTEL CO : 111 SUMMER ST., BOSTON, MASS.



## Season Members' Tournament

THE second annual Season Members' tournament got under way on Monday of this week\* with the playing of the qualifying round in which some thirty odd members took the field for the four days battle and were led at the end of the round by T. Russell Brown, of the Malletts Bay Club, winner of the Advertisers' tournament last season and one of the favorites to win the major trophy in this event.

Brown's margin of victory in the qualifying round was a narrow one, for following close on his heels came John D. Chapman, with an 80, and Donald Parson, 81. E. L. Scofield, who won this tournament last year, came very near being squeezed out of first division contention when he tied, at 87, with Nat Hurd for last place in the top flight. Others who made the first division are: Francis T. Keating, 83; W. T. Barr, 83, and P. S. P. Randolph, Jr., 84.

Four divisions of eight qualified as follows:

FIRST DIVISION		SECOND DIVISION	
T. Russell Brown	79	M. Morris	89
John D. Chapman	80	J. R. Bowker	89
Donald Parson	81	W. A. Rupp	90
Francis T. Keating	83	B. V. Covert	91
W. T. Barr	83	P. Stevenson	91
P. S. P. Randolph, Jr.	84	J. D. Armstrong	92
Nat S. Hurd	87	A. S. Higgins	92
E. L. Scofield	87	E. H. Wiswell	95

THIRD DIVISION		FOURTH DIVISION	
C. S. Strout	96	H. B. Swoope	100
J. F. Dailey	96	I. Hellman	101
P. S. P. Randolph, Sr.	96	P. B. O'Brien	102
H. H. Rackham	97	G. T. Dunlap	102
C. L. Becker	97	G. A. Magoon	103
C. H. Lay	98	J. T. Newton	104
J. L. Weller	99	A. W. Stanley	106
C. S. Waterhouse	99	M. J. Rogan	107

