

# MRS. BUTLER'S ACHES AND PAINS

Vanished After Using Lydia E. Pinkham's Vegetable Compound

W. Philadelphia, Pa. — "When I cleaned house last April I must have overfired, for after that I had pains and aches all the time and was so discouraged. I could hardly do my own housework, and I could not carry a basket of groceries from the store nor walk even four or five squares without getting terrible pains in my back and abdomen and lower limbs.

I went to visit a friend in Mt. Holly, N. J., and she said, 'Mrs. Butler, why don't you take Lydia E. Pinkham's Vegetable Compound?' My husband said that if it did her so much good for the same trouble, I should try it. So I have taken it and it is doing me good. Whenever I feel heavy or bad, it puts me right on my feet again. I am able to do my work with pleasure and am getting strong and stout. I still take the Vegetable Compound and Liver Pills, and am using Lydia E. Pinkham's Sanative Wash." — Mrs. CHARLES BUTLER, 1233 S. Hanson St., W. Phila., Pa.

Write to Lydia E. Pinkham Medicine Co., Lynn, Mass., for a free copy of Lydia E. Pinkham's Private Text Book upon "Ailments of Women."

Wanted—Men to Learn Barber Trade. Make money while learning. Tuition \$35—everything furnished. Jobs waiting students. QUEEN'S COLLEGE, Spartanburg, S. C.

The successful manicurist has plenty of business on hand.

Cuticura Soap for the Complexion. Nothing better than Cuticura Soap daily and Ointment now and then as needed to make the complexion clear, scalp clean and hands soft and white. Add to this the fascinating, fragrant Cuticura Talcum, and you have the Cuticura Toilet Trio.—Advertisement.

If time is money you can't accuse a lazy man of being stingy.

## Have You a Bad Back?

You can't be happy when every day brings morning lameness, torturing backache and sharp, cutting pains. So, why not find the cause and correct it? Likely it's your kidneys. If you suffer headaches and dizziness, too—feel tired, nervous and depressed, it's further proof your kidneys need help. Neglect is dangerous! Begin using Doan's Kidney Pills today. Thousands have been helped by Doan's. They should help you. Ask your neighbor!

### A South Carolina Case

Mrs. J. H. Caldwell, 127 N. Main St., Belton, S. C., says: "A cold settled in my back. My kidneys were sluggish and I had a dull ache in my back. My joints were so stiff and lame I could hardly bend over. There were sharp pains in my knees. My kidneys didn't act right, either, so I used Doan's Kidney Pills. One box of Doan's cured me."

Get Doan's at Any Store, 60c a Box  
**DOAN'S KIDNEY PILLS**  
FOSTER-MILBURN CO., BUFFALO, N. Y.

## RATHER SPOILED THE EFFECT

Unfortunate That Proud Driver of Car Should Have Forgotten to Remove That Pail.

They were talking about embarrassing moments at the Friday Morning club when one fair matron remarked: "While living in a small western town a few years ago, my husband purchased an automobile. Upon inspecting our garage I discovered a leak in the roof and, to save the new machine from a possible drenching, I placed a five-gallon pail on top of it. Several days later I motored to town, all puffed up with pride, unaware that the pail was still on top of the car, and it surely was my most embarrassing moment when I parked near a dairy and a kind stranger offered to take the milk pail down for me."

### Feeling Was Mutual.

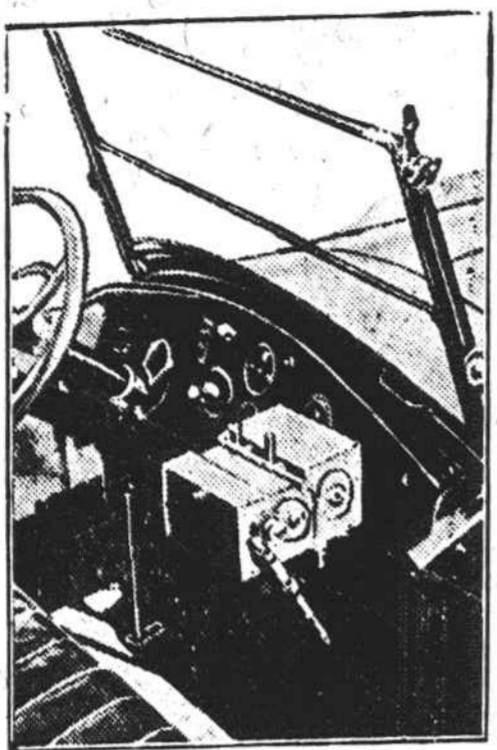
Billie had been a naughty boy and upon rising in the morning his mother said, "Now, Billie, you were a bad boy yesterday and I hope you will be better today. Yesterday nobody liked you." "That's all right, mother," said Billie; "yesterday I didn't like myself."

**Wishing for sleep is a poor way to get it.**  
Try **Postum** instead of coffee  
"There's a Reason"  
Iced Postum is delicious

## GOOD HIGHWAYS

### Highway Surface Tester Keeps Record of Bumps

A manufacturer of road machinery has recently perfected an ingenious recording instrument to measure inequalities in highway pavement surface. This instrument is divided so that it may be mounted at the side of an automobile dashboard as shown in the illustration, and is intended to record variance in surface by the markings of pencils upon a rolled chart fed through the tiny machine. All inequalities in the surface of the pavement passed over by either of the front wheels are recorded. This



Road Surface Tester.

is reduced to a horizontal scale where by 1 inch equals 50 feet, and a vertical scale where 1/4 inch equals 1 inch. Irregularity in either line outward indicates a depression, irregularity of the line inward indicates a hump. The roll of paper constituting the chart is sufficient to record inequalities in ten miles of road surface for the guidance of road maintenance officials.

### Federal-Aid System of Highways in 34 States

(Prepared by the United States Department of Agriculture.)

Roads that will comprise the federal-aid system of highways have been definitely designated in 34 states, according to the bureau of public roads of the United States Department of Agriculture.

A story of the system in the 34 states now approved shows some interesting facts. Nearly every city of over 5,000 population is located upon it, and the few that are not will connect with it over improved roads. Indications are that over 90 per cent of the entire population of the United States will live within ten miles of a federal-aid highway. In a number of states the figure is as high as 98 per cent, and in none of the states will it drop below 65 per cent.

The following tabulation shows the mileage in the system by states, estimates being given for those states whose systems are not yet approved:

Federal Aid System	Federal Aid System
Alabama ... 3,958	Nevada ... 1,456
Arizona ... 1,498	N. Hampshire ... 938
Arkansas ... 5,037	New Jersey ... 983
California ... 4,487	New Mexico ... 3,258
Colorado ... 3,360	New York ... 4,498
Connecticut ... 835	N. Carolina ... 3,848
Delaware ... 266	N. Dakota ... 4,855
Florida ... 1,855	Ohio ... 4,506
Georgia ... 5,662	Oklahoma ... 7,889
Idaho ... 2,772	Oregon ... 2,814
Illinois ... 4,987	Pennsylvania ... 3,954
Indiana ... 3,957	Rhode Island ... 165
Iowa ... 7,154	S. Carolina ... 3,179
Kansas ... 6,423	S. Dakota ... 8,077
Kentucky ... 3,250	Tennessee ... 4,564
Louisiana ... 2,667	Texas ... 11,655
Maine ... 1,393	Utah ... 1,430
Maryland ... 1,036	Vermont ... 1,043
Massachusetts ... 1,290	Virginia ... 3,018
Michigan ... 4,582	Washington ... 2,837
Minnesota ... 6,391	W. Virginia ... 1,901
Mississippi ... 2,290	Wisconsin ... 5,516
Missouri ... 7,040	Wyoming ... 3,234
Montana ... 4,637	
Nebraska ... 5,500	Total ... 187,408

\*Mileage given is an estimate, as system is not yet approved.

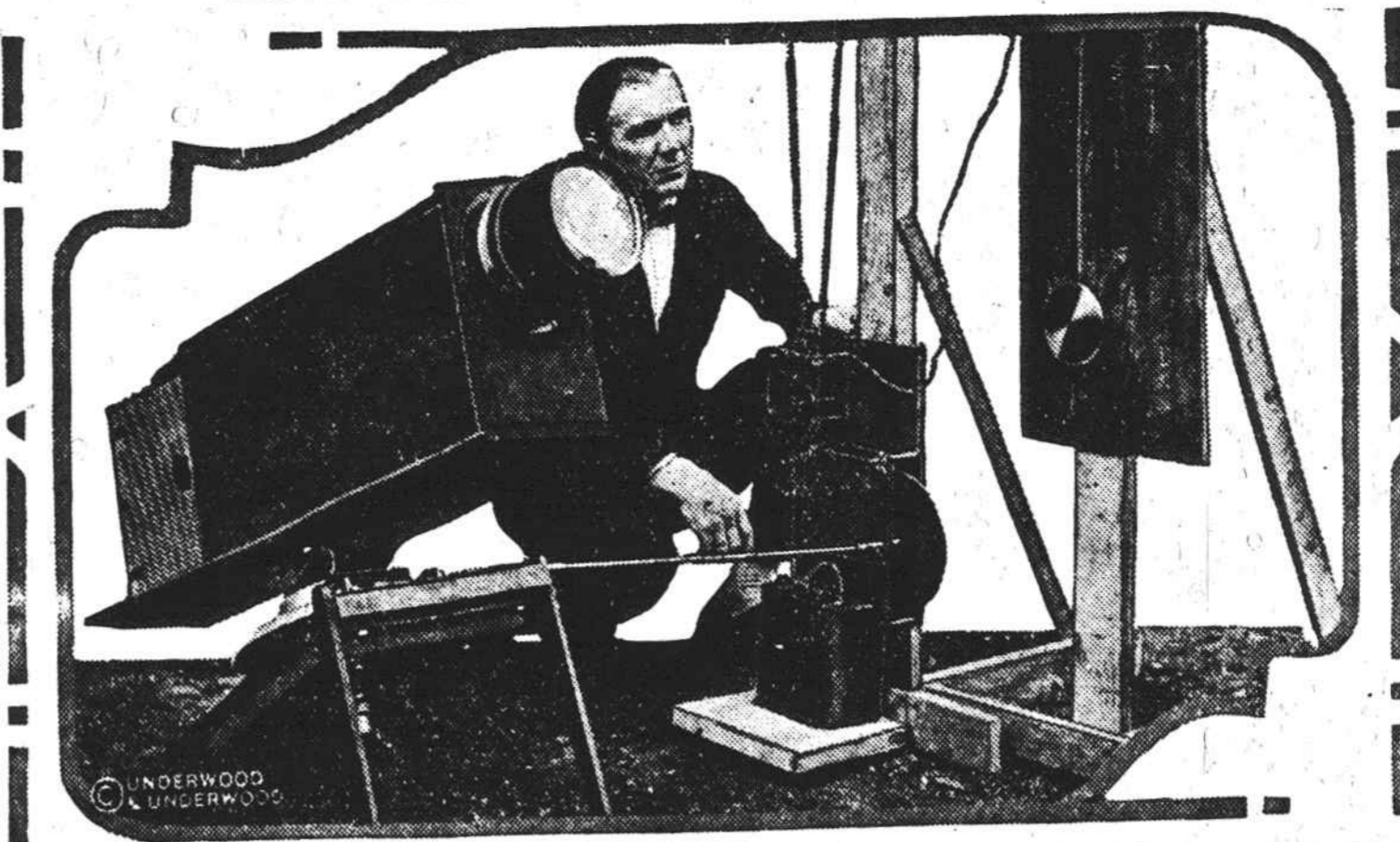
### Considerable Work Yet to Do on Dixie Highway

Judge M. M. Allison, president of the Dixie Highway association, Chattanooga, Tennessee, announces that at the annual meeting of the association held in Chattanooga, Richard J. Finnegan and William G. Edens, of Chicago, were elected directors for the association from the state of Illinois. The Dixie Highway is complete from the Indiana line into Chicago. Other states, however, are not quite so fortunate, and have considerable work yet to do between the Indiana line and Miami, Fla., the southern terminus of the highway. It is proposed to hold a series of meetings at points in Kentucky, Tennessee, Georgia and Florida, where local interests are planning to complete their sections of this important North and South trunk line highway.

### North Carolina's Great Better Highway Program

The North Carolina state highway commission recently let new road contracts amounting to \$3,030,000. Bids were submitted by 105 different firms of road contractors. There were 21 projects totaling 193.67 miles, of which 63.68 miles were mostly of asphalt paving and cost \$1,933,937, or \$30.370 per mile, including grading, draining, bridges and culverts. The widths of the pavement were about equally divided between 16 and 18 feet.

## Movie Patrons to See the Solar Eclipse



Science expects to make it possible for one to see the total solar eclipse of September 10 in the movies in three minutes instead of spending two hours and fifty-five minutes watching it, by the use of equipment which is being shipped from the Yerkes observatory of the University of Chicago to Santa Catalina Island, Cal. Capt. Barnett Harris of Chicago, under the direction of Dr. Edwin B. Frost, will photograph the eclipse with four cameras in batteries of two, which will be placed fifteen miles apart so as to minimize cloud interference. Two of the cameras will work automatically during the eclipse, and when the job is completed it will be shown throughout the United States. The signal corps and air service of the War department are co-operating with special lenses and apparatus. The automatic cameras are driven by electro-magnets, and the work of this expedition will be observed with a great deal of interest by the public and scientific world. The photograph shows Captain Harris and some of the equipment to be used.

### "LET ME STAY," SAID CAL



"I like the job. I want to stick to it. Please let me stay," was the closing phrase in the letter young Cal Coolidge wrote to his mother just after having learned that his father had been elevated to the presidency. Here's Cal on the job—working in a tobacco field at Hatfield, Mass., for \$3 a day.

### GRANDSON OF A KING



Princess Mary, Viscountess Lascelles, with her son, George Henry Hubert, named for his father and his grandfather, King George, from a portrait just received in this country.

### MR. COOGAN'S FAVORITE



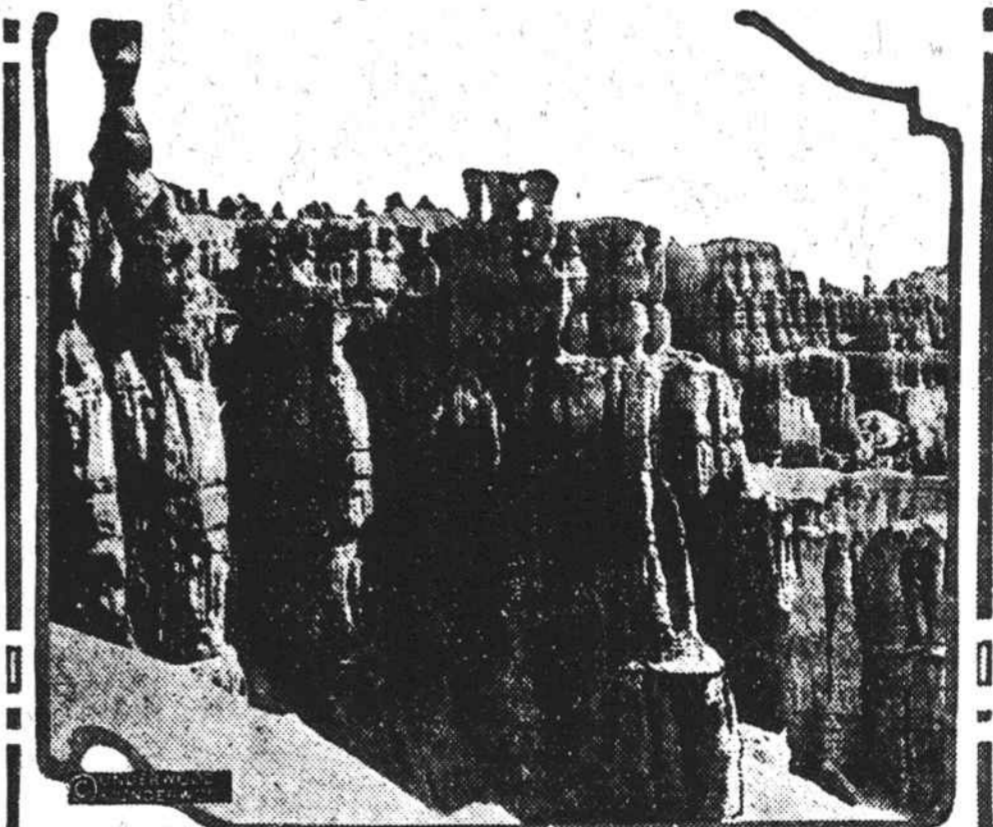
Here's a much envied girl. She is Little Peaches Jackson, and Jackie Coogan—you know him—has shown a preference for her. Peaches is his constant companion, the youngsters playing together at every opportunity.

### Parade of Athletes in Paris



Photograph of thousands of young French athletes marching through the Arc de Triomphe under which is buried France's Unknown Soldier. These young men are preparing for the future athletic meets in which they will strive to represent France.

### Scene in Bryce Canyon Monument



The newest national monument was established by the late President Harding in a proclamation which set aside twelve square miles in southern Utah as the Bryce Canyon National monument, within the Powell National forest. This canyon is declared by the United States forest service to be one of the most unique and beautiful geological features in the United States. Photograph shows a remarkable view there.

### President Coolidge at His Desk



The first picture to be made of President Coolidge in the White House executive offices, seated at the desk used only a short time ago by President Harding.

**WRIGLEYS**  
After Every Meal  
Have a packet in your pocket for ever-ready refreshment.  
Aids digestion. Allays thirst. Soothes the throat.  
For Quality, Flavor and the Sealed Package, get  
**WRIGLEYS SPEARMINT**  
THE PERFECT GUM  
THE FLAVOR LASTS

"A God-sent Blessing"  
is what one mother writes of Mrs. Winslow's Syrup. Thousands of other mothers have found this safe, pleasant, effective remedy a boon when baby's little stomach is upset. For constipation, flatulency, colic and diarrhoea, there is nothing like  
**MRS. WINSLOW'S SYRUP**  
The Infants' and Children's Regulator  
It is especially good at teething time. Complete formula on every label. Guaranteed free from narcotics, opiates, alcohol and all harmful ingredients.  
At all Druggists  
Write for free booklet of letters from grateful mothers.  
ANGLO-AMERICAN DRUG CO.  
215-217 Fulton St. New York  
General Selling Agents:  
Harold F. Ritchie & Co., Inc.  
New York, Toronto, London, Sydney

W. N. U., CHARLOTTE, NO. 35-1923

Wise Business Move.  
The visit of the American silk commission to Japan has brought forth fruit. The object of the commission was to try to induce the Japanese to improve their raw silk and the methods of marketing it. To bring this about a new silk bureau has been organized by the department of agriculture at Tokyo, while the silk reeler themselves have decided to employ every possible means to improve the quality of Japanese silk. Another suggestion of the Americans, the amalgamation of smaller mills, is being carried out. The importance of the silk industry is shown by the great increase in production. While in 1912 the value of the crop was 190,000,000 yen, it reached 950,000,000 yen in 1922.

Artificial Marble.  
Synthetic marble, capable of taking a high polish, has been made recently, according to a report to the British Chemical society, by heating hydrated sodium carbonate and calcium chloride, or a paste of precipitated chalk and a solution of common salt, for eight hours at a temperature of 200 degrees centigrade and a pressure of 24 atmospheres.

Made only of wheat and barley scientifically baked 20 hours —  
Supplies Vitamin-B and mineral elements.  
How can Grape-Nuts be other than a wonderfully appetizing, healthful food?  
"There's a Reason"