

FOR HAPPY THANKSGIVING FEASTING— AND PLENTY OF SAVINGS—SELECT...

A&P's Thrift-giving HOLIDAY VALUES

SHOP AHEAD
A&P WILL BE CLOSED
THANKSGIVING DAY
NOVEMBER 26



JANE PARKER
THRIFTY HERB SEASONED
STUFFING MIX
8-Oz. Pkg. 33c 1-Lb. Pkg. 59c
JANE PARKER STUFFING
CUBES 12-Oz. Pkg. 32c
JANE PARKER STUFFING
BREAD 24-Oz. Pkg. 33c

"SUPER-RIGHT" QUALITY HEAVY CORN-FED BEEF

SIRLOIN STEAKS	Lb.	\$1.08
T-BONE STEAKS	Lb.	\$1.12
PORTERHOUSE STEAK	Lb.	\$1.12

MEL-O-BIT PASTEURIZED, PROCESSED, INDIVIDUAL

CHEESE SLICES	8-Oz. Pkg.	39c
----------------------	------------	------------

• AMERICAN
• PIMIENTO
• SWISS

Great Eating for the Holiday—A&P's Groceries!

RED, GREEN OR WHITE
Glaced Pineapple Lb. **98c**
YOUR CHOICE — RED OR GREEN
Glaced Cherries Lb. **98c**
YOUR CHOICE GLACED
Citron or Peels Lb. **74c**
A&P BRAND BIG VALUE
Seedless Raisins 15-Oz. Pkg. **35c**
SHELLED READY TO USE—A&P
Pecan Halves 6-Oz. Pkg. **85c**
SHELLED READY TO USE—A&P
Walnut Halves 3-Oz. Pkg. **47c**
ANN PAGE DARK OR LIGHT
Choc. Cherries 12-Oz. Pkg. **65c**
WARWICK ASSORTED CANDIES
Milk Chocolates 1-Lb. Pkg. **99c**
DARK CHOCOLATE COATED
Thin Mints BY ANN PAGE 10-Oz. Pkg. **49c**
ANN PAGE CHOC. COATED RAISIN OR
Chocolate Stars 1-Lb. Pkg. **79c**
A&P BRAND WHOLE OR JELLIED
Cranberry Sauce 2 1-Lb. Can **31c**
SERVE WITH SOUP—SUNSHINE
Hi-Ho Crackers 10-Oz. Pkg. **31c**
"SUPER-RIGHT" NEW PRODUCT
Vienna Sausage 3 4-Oz. Cans **79c**

GOLDEN CREAM OR WHOLE KERNEL
Stokely Corn 4 1-Lb. Cans **\$1.00**
CUT GREEN STOKELY
Beans 3 27-Oz. Cans **\$1.00**
HOLIDAY VALUE! HONEY POD
Stokely Peas 4 1-Lb. Cans **\$1.00**
HOLIDAY PRICED — STOKELY
Tomato Sauce 8-Oz. Can **10c**
BIG SALAD VALUE! FRENCH STYLE
Stokely Beans 4 1-Lb. Cans **\$1.00**
STOKELY VAN CAMP
Pork and Beans 5 21-Oz. Cans **\$1.00**
SPECIAL OFFER ON STOKELY
Tomato Juice 3 46-Oz. Cans **\$1.00**
FOR HOLIDAY USE—ALUMINUM
Wonderfoil Wrap 12"x25' Roll **23c**
HEAVY DUTY ALUMINUM
Reynolds Wrap 18"x75' Roll **57c**
FOR HOLIDAY BAKING—ROASTWELL
Roasters 12-Lb. Size **\$1.59**
SPECIALLY PRICED
A&P Facial Tissue 5 200-Ct. Pkgs. **\$1.00**
A&P BRAND PURE
Instant Coffee 10-Oz. Jar **\$1.29**
A&P BRAND DRY NON-FAT—INSTANT
Milk Solids 8-Quart Size **95c**

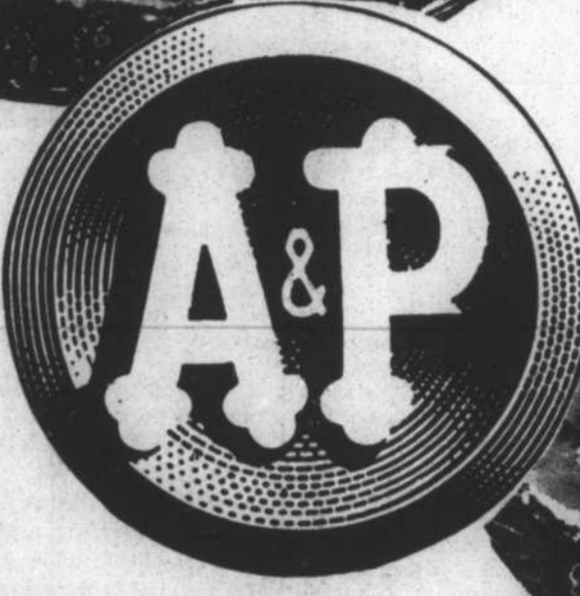


Grade 'A' Eating! Holiday Turkeys from A&P!

"SUPER-RIGHT" QUALITY GRADE 'A' YOUNG HOLIDAY

TURKEYS

10 TO 14-LB. HEN TURKEYS Lb. **39c**
16 TO 22-LB. TOM TURKEYS Lb. **35c**

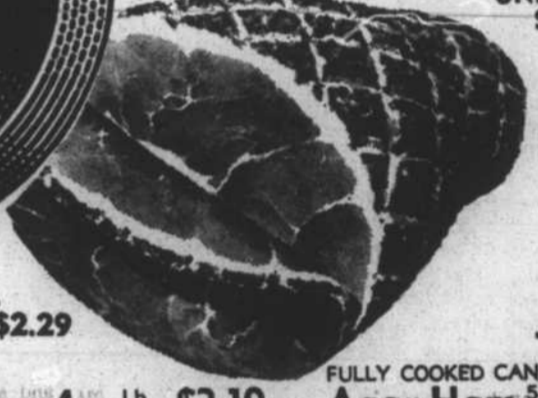


A&P SELF-BASTING GRADE 'A' TURKEYS
10 to 14-LB. HEN TURKEYS Lb. **49c**
16 to 22-LB. TOM TURKEYS Lb. **45c**

"SUPER-RIGHT" QUALITY HOLIDAY PRICED
Whole Smoked Picnics Lb. **39c**
TOP QUALITY GRADE 'A' FROZEN
Chicken Hen Fowl Lb. **39c**
"SUPER-RIGHT" QUALITY 4 to 6 LB. AVG.
Young Ducklings FOR YOUR HOLIDAY Lb. **59c**

"SUPER-RIGHT" QUALITY 14 to 19-LB. AVG.
SMOKED HAMS
WHOLE HAM, HAM SHANK HALF OR HAM BUTT PORTION Lb. **49c**

HAM BUTT HALF lb. 53c SHANK PORTION lb. 39c
CENTER SLICES lb. 99c CENTER PORTION lb. 89c
ONE FIFTH HAM SLICED Lb. **59c**



"SUPER-RIGHT" FRESH PORK HAMS
WHOLE OR SHANK HALF Lb. **53c**
"SUPER-RIGHT" FANCY BONELESS, COOKED HAM HALVES Lb. **\$1.19**

PATRICK CUDAHY CANNED PICNICS 3 Lb. Can **\$2.29**
"SUPER-RIGHT" FULLY COOKED CANNED
Cooked Ham 4 Lb. Can **\$3.19**
"SUPER-RIGHT" QUALITY HOT OR MILD
Agar Ham 5-Lb. Can **\$3.99** 3-Lb. Can **\$2.49**

"SUPER-RIGHT" QUALITY HOT OR MILD
PURE PORK SAUSAGE 3 1-Lb. Rolls **\$1.00**

SHOP A&P FOR VALUES THAT WILL PLEASE YOUR BUDGET
ALLGOOD BACON 2-Lb. Pkg. **\$1.09** 1-Lb. Pkg. **55c**

CAP'N JOHN'S FROZEN SHRIMP COCKTAIL 3 4-Oz. Jars **89c**
OCEAN PERCH FILLET 1-Lb. Pkg. **55c**
BACON END SLICES 1-Lb. Pkg. **27c**
SEASONING BACON 3 Lb. **69c**

Festive Treats!

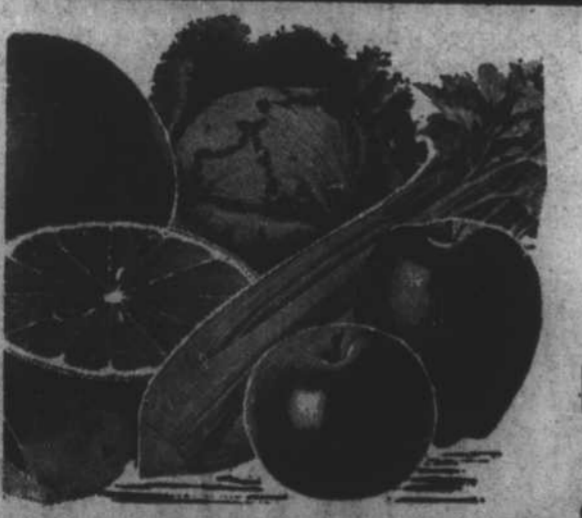
SHOP A&P FOR HOLIDAY VALUES
A&P PUMPKIN 2 1-Lb. Cans **33c**
SHOP A&P FOR KELLOGG'S FOR STUFFING
CROUTETTES 7-Oz. Pkg. **39c**
SHOP A&P FOR SUNNYFIELD SWEET CREAM IN QUARTERS
BUTTER 1-Lb. Ctn. **85c**
SHOP A&P FOR REFRIGERATED BY GOLDEN RISE
COOKIES 2 10 1/2-Oz. Pkgs. **45c**
FOR BAKING AND PANCAKES BY ANN PAGE
PURE HONEY 2-Lb. Jar **79c**
ANN PAGE CHOC. OR VANILLA MIX FOR
INSTANT PUDDING 4 1/2-Oz. Pkgs. **10c**
ANN PAGE SMOOTH OR CRUNCHY
PEANUT BUTTER 28-Oz. Jar **79c**
ANN PAGE CONDENSED
SOUP: CHICKEN NOODLE 7 10 1/2-Oz. Cans **\$1.00**
SOUP: VEGETABLE OR CHICKEN W/RICE 7 10 1/2-Oz. Cans **\$1.00**

Frozen Foods!

READY TO USE TWIN PACK
A&P PIE SHELLS 3 2-Ct. 9-Oz. Pkgs. **\$1.00**
MORTON CORN MUFFINS OR MUFFIN
ENGLISH MUFFINS 11-Oz. Pkg. **25c**
A&P CONCENTRATED
ORANGE JUICE 2 6-Oz. Cans **33c**
PEPPERIDGE FARMS ALL FLAVORS
PIE TARTS 2 5 3/4-Oz. Pkgs. **45c**
CHOOSE FROM ALL FLAVORS — AND SHERBET
MARVEL ICE CREAM 1/2-Gal. Ctn. **65c**

ANN PAGE SPICE
Cream of Tartar 1 3/4-oz. size **29c**
Pumpkin Pie Spice 1 3/4-oz. size **43c**
Poultry Seasoning 1-oz. size **23c**
Black Pepper ground 4-oz. size **35c**
Ground Sage 1-oz. size **27c**
Ground Allspice 2-oz. size **49c**
Ground Nutmeg 2-oz. size **35c**
Ground Cinnamon 4-oz. size **85c**
A&P HAS A GOOD VARIETY OF EXTRACTS — PRICE LOW!

Farm-Fresh Holiday Produce!

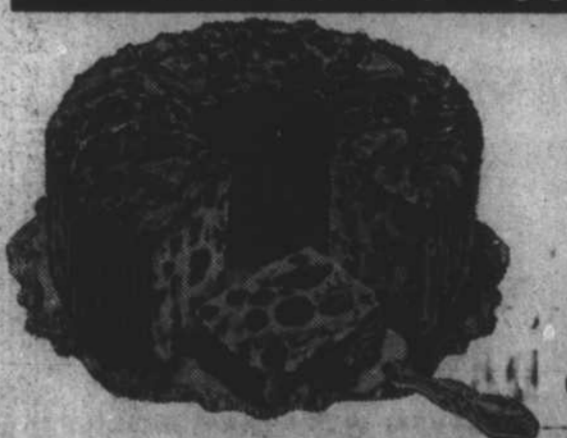


GOLDEN, ALL PURPOSE, THRIFTY
BANANAS Lb. **10c**

WESTERN DELICIOUS APPLES 10 For **59c**
• HOLIDAY SHOP A&P
FRESH CORN 5 Tender Yellow Ears **29c**
• PLUMP, JUICY
CRANBERRIES 1-Lb. Pkg. **25c**
U. S. NUMBER ONE RUSSET
POTATOES 10 Lb. Bag **63c**

• YOUR CHOICE OF RED OR GOLDEN
• FLORIDA, SWEET PINK
GRAPEFRUIT 5 Bag Lb. **49c**
• CALIFORNIA SWEET
EMPERIOR GRAPES Lb. **19c**
• FULL OF MILK
COCOANUTS FOR YOUR HOLIDAY Each **23c**

Just Baked—Just For You!



JANE PARKER BAKE N' SERVE
Cloverleaf Rolls 2 12-Oz. Pkgs. **49c**
JANE PARKER FRESHLY BAKED
PUMPKIN PIES 22-Oz. Package **49c**
JANE PARKER FRESHLY BAKED
BLACKBERRY PIES 22-Oz. Package **49c**
JANE PARKER CAKE
ORANGE CHIFFON 17-Oz. Pkg. **55c**
JANE PARKER HOLIDAY VALUE
Marble Pound Cake 25-Oz. Size **59c**
JANE PARKER FRESHLY BAKED
Danish Pecan Ring 9-Oz. Pkg. **49c**
JANE PARKER CAKE
Banana Nut Loaf 14-Oz. Pkg. **45c**
JANE PARKER LARGE
Cake Donuts GOLDEN SUGARED 18-Pkgs. **45c**

JANE PARKER AMERICA'S FAVORITE — OVER 2/3 FRUITS AND NUTS
FRUIT CAKES
3-Lb. Cake In A Container **\$3.79** 1 1/2-Lb. Cake **\$1.79** 3-Lb. Cake In Ctn. **\$3.29** 5-Lb. Cake **\$4.59**
JANE PARKER ENRICHED REGULAR OR SANDWICH SLICED
WHITE BREAD 3 1 1/2-Lb. Loaves **79c**

GERBER 2 25c 23c

• RICE
• BARLY
• DRY CEREAL
• HI PROTEIN