

**40¢ OFF**  
 WITH THIS COUPON  
**CHICKEN SNACK**  
 2 PCS. GOLDEN FRIED CHICKEN,  
 FRENCH FRIES AND A ROLL  
 11 a. m. — 3 p. m.  
 Mon. thru Thurs.  
**Boy, can we cook chicken.**  
**Golden Skillet**  
 Ridgeway St Warrenton 257-2686

**99¢ REG. \$1.39**

## Scabies In Epidemic Proportion In Schools

Scabies (a Latin word meaning scratch) has reached epidemic proportions in North Carolina public schools, according to Dr. Peter D. Rogers, field epidemiologist with the Division of Health Services. "It's the plain of itch people last had to contend with on a large scale back in the early 1940's," Rogers said. "There

has been a stream of letters and calls to my office from school and local health officials recently, wanting to know how to treat it. It's the same throughout the country." Rogers said scabies is spread person to person and from objects to person. He said the disease is caused by an itch mite which is parasitic to man. It burrows into the outer layer of skin while feeding on tissue. Scabies, often called a "disease of families" because of its tendency to spread to all

members of a family once there is an infestation, shows up about four weeks after infection, Rogers points out. He said the most common sites of infection in older children and adults are between the fingers, backs of the hands, elbows, under the arms, groin, breasts of women and buttocks. In infants, the face is a common site of infection. The public health official said the treatment of choice for scabies is one percent gamma benzene hexachloride, which is

commercially marketed as kwell cream or lotion. "After a bath, kwell should be applied to the entire body below the shin and remain on for 24-hours," Rogers stated. "The same treatment should be repeated in seven days. Kwell should not be applied close to body orifices, or mucous membranes. It is for external use only. If an infant presents scabietic lesion on the face, Kwell cream should be applied directly to the lesions and the infant's hands restrained. Rogers said it is not a disgrace to get scabies, but it is to keep it. . . "and keep it they will if nothing is done," Rogers warned. "Scabies will go on indefinitely if it is not treated properly."

**WARRENTON PENTECOSTAL HOLINESS CHURCH**  
 (Located on US 401 between Warrenton and Norlina)



**Invites You**

**SERVICES:**

Sunday School	10 A. M.
Worship Hour	11 A. M.
Evangelistic	7 P. M.
Family Night	Wed. 7:30 P. M.

You will enjoy the spiritual singing of our choir and vocal groups — also the inspiring preaching of our pastor, Jim Brinkley. If you do not have transportation — Call 257-4164. (The Church Where Christ Is Real And Everybody Is Somebody)

## Ford Dealer Limited Edition Sale

New sporty Limited Edition Mustang II with \$137

of extra retail value at no extra charge\*  
 Includes: all Mustang II standard equipment. Plus two-tone lower body, bodyside stripe, unique seat inserts, styled steel wheels, trim rings, brushed aluminum panel applique



Limited Edition Mustang II 2-Door (Also available on Mustang II 2+2)

Beautiful new Limited Edition Ford Torino

**\$159**

Includes: all Torino standard equipment. Plus half-vinyl roof, opera windows, accent paint stripe, bodyside molding, dual racing mirrors, sport wheel covers, and specially-selected interior.



(Car shown with white sidewalls \$39 extra)

Explorer Special Pickups up to \$201 off\*



Major discounts on Limited Edition Explorer Pickups with special metallic paints, mag-type wheel covers, unique color-keyed interiors and your choice of equipment such as power steering, automatic transmission, air conditioning

New Limited Edition Ford Elite

**\$200**

off standard Elite sticker price  
 Includes: Elite standard equipment. Plus unique wheel covers, special bench seat and trim, special door trim panels, selected matching cloth and vinyl interiors, but excluding wheel lip moldings, door carpet and deluxe steering wheel.



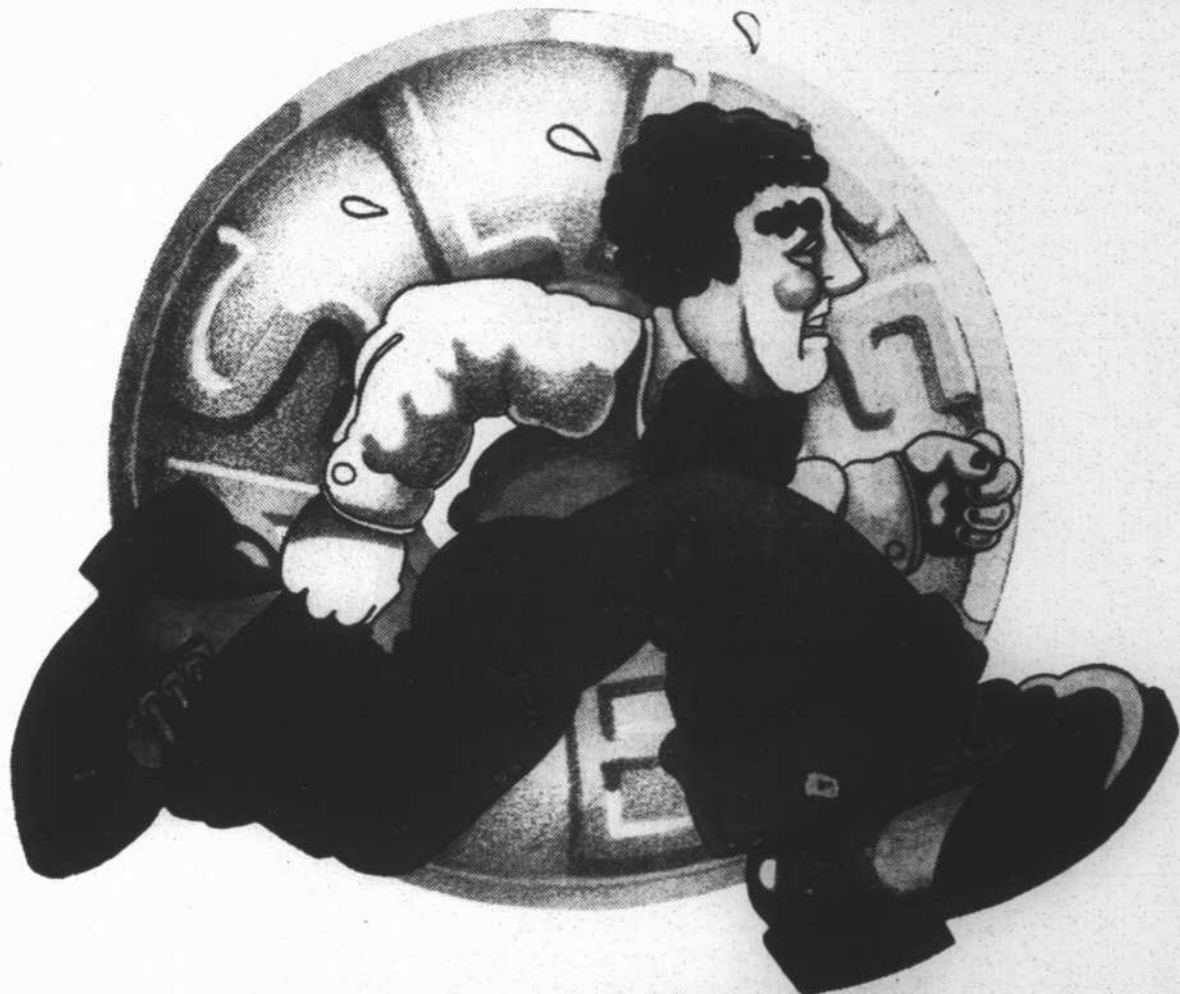
(Car shown with white sidewalls \$39 extra)

\*Based on suggested retail prices of separate options compared to special package prices. Truck shown with white sidewalls \$40 extra and rear bumper \$60 extra.



Buy now for extra value at your Ford Dealer Limited Edition Sale. Hurry! Quantities are limited.

**FOWLER-BARHAM FORD, INC.**  
 Norlina Road Warrenton



**IF YOU'VE BEEN GOING AROUND IN CIRCLES TRYING TO SAVE SOME MONEY, WE'VE GOT A SWEET DEAL TO GET YOU STARTED.**

If you open a Peoples Bank Savings Account in the near future, we'll give you a roll of Life Savers. Why Life Savers? Because we wanted to remind you that a Peoples Bank Savings Account might be just what you need during an emergency someday.

**Peoples Bank**

Home Office — Rocky Mount. Also serving Bailey, Battleboro, Edenton, Elizabeth City, Enfield, Harrellsville, Henderson, Hertford, Hobbgood, Jackson, Middlesex, Nashville, Norlina, Pinetops, Raleigh, Roxboro, Scotland Neck, Sharpsburg, Spring Hope, Tarboro, Whitakers & Zebulon.

Member F.D.I.C.

## Praised For Recital

The [Wartburg Iowa] Trumpet By HOWARD BYE

Professor Irene Weldon gave the Wartburg musical community a rare treat last Monday evening. As one of the finest recitals I have ever attended at Wartburg, it was a memorable performance by this talented and versatile soprano.

The program began with five Scarlatti songs and a "Recitative and Aria" from Handel's Julius Caesar. Her superior breath and tone control provided the means to a fine Baroque style. My favorite was the beautiful "Cara, cara e dolce."

A group of works by Mahler and Strauss followed, and it is here, in the Romantic songs, where Miss Weldon is at her very best. I cannot begin to explain all the musical emotions portrayed here. As Miss Weldon sang, one could sense exactly what the song was describing, even though the words were sung in German.

The darling "Wer hat dies Liddlein erdacht?" by Mahler was lots of fun. "Freundliche Vision" by Strauss and "Erinnerung" by Mahler just left one awed by the tonal beauty.

A contemporary suite by Pinkham entitled "Three Songs from Ecclesiastes" followed the romantic works. The third song, "To Everything There is a Season," had an interesting accompaniment that added much to the work.

Two duets from Mozart operas followed. Baritone David Smalley, with whom Miss Weldon had performed "Porgy and Bess" for the

Wartburg Community Symphony earlier this year, again assisted, "Pa-pa-pa-papagena" from "Die Zauberflote" was especially enjoyable.

The climax of the evening came with "Adieu, forests" from Tchaikovsky's "Jeanne d'Arc." In it, Joan says farewell to her home, following the divine call to lead the French forces in battle against the English. The cute and technically demanding "Adele's Laughing Song" from "Die Fledermaus" by Strauss was the icing on the cake.

The recital ended with a duet from "La Traviata" by Verdi. It was a bit tedious and anticlimatic for my taste. But it took nothing away from this program. Miss Weldon put everything together for a truly superb performance.

She is the daughter of Mr. and Mrs. Glenn Weldon of Norlina.

Strip mines in the United States, unreclaimed and left just as they were when the last of the coal was dug out, altogether amount to an area larger than the state of Rhode Island, National Geographic says. Each day coal strip mines leach more than 400,000 pounds of sulphuric acid into the nation's streams.

## BASIC GRANTS ARE NOW AVAILABLE AT Sir Walter Beauty Academy

Henderson Mall, Henderson, N.C.

PHONE 492-2021



**BASIC GRANTS MAKE FUNDS AVAILABLE TO ELIGIBLE STUDENTS ATTENDING APPROVED BEAUTY SCHOOLS Remember... GRANTS ARE GIFTS AND ARE NOT REPAYABLE.**

To Apply For A Basic Grant You Must Complete A Form To Determine Your Basic Grant Eligibility Which Is Available At Sir Walter Beauty Academy In Henderson, N.C.

THIS COULD BE THE ANSWER TO YOUR DREAM OF BECOMING A HAIRDRESSER.

**Leggett**

Your Happy Shopping Store in Warrenton

**sale**  
 9 DAYS ONLY

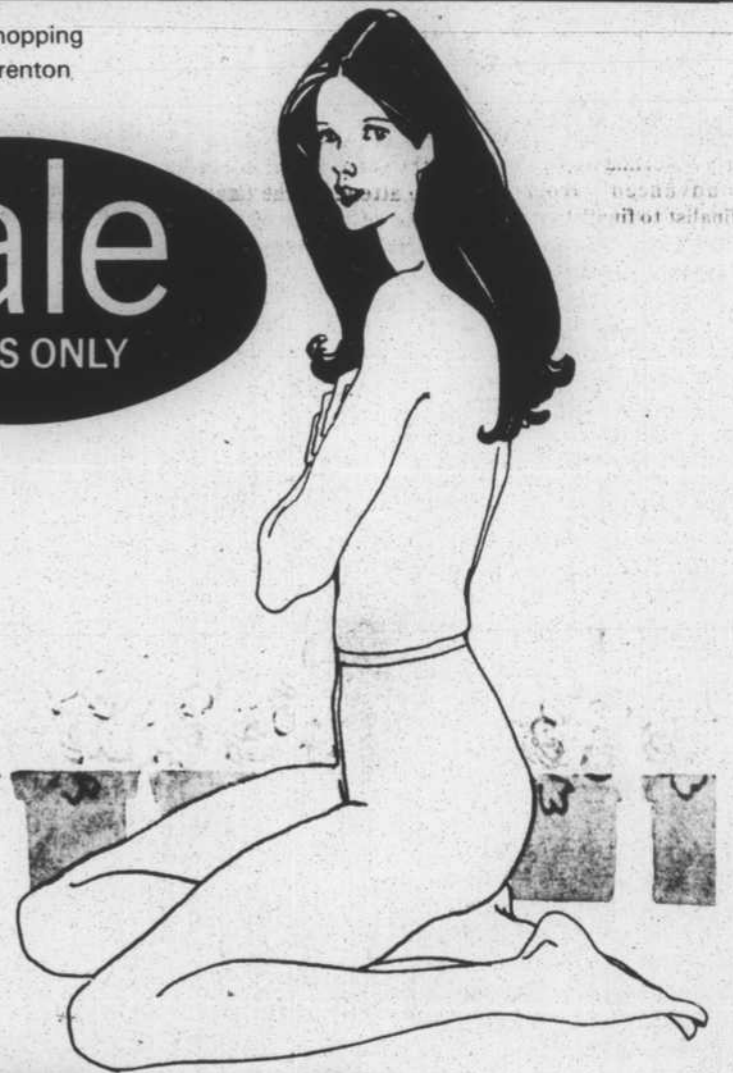
**Reigning Beauty®**  
 panty hose for the budget-minded  
**58¢** pair  
 USUALLY 79¢

They look so sleek, fit so well—and cost so very little! And right now we've even slashed the price further. You save 20¢ per pair and get first quality, wonderful fitting panty hose. All of Spring's most flattering shades including navy, white, sheer to the waist, super sheers, 20 denser, multi-fiber stretch. Height and weight proportioned sizes.

sheer, practical knee-high's

**38¢** pair  
 USUALLY 49¢ PAIR

• comfort top • run-guard toes • stretch-fit regular and queen size



**sale**  
 9 DAYS ONLY

**Reigning Beauty®**  
 Spring's sleek slings  
**12.88**  
 USUALLY \$15

They're light, airy—gracefully feminine. They're pillow soft! And that means each step is cushioned. Nice details like contrast stitching, criss-cross straps, tapered heels. From the side, from the back, from the top they flatter. In softest urethane kid, in Spring's key colors. And now at a price that says, hurry! Women's sizes.



AT YOUR NEAREST BELK OR LEGGETT STORE