

College Program Receives Final National Accreditation



Officials of Vance-Granville Community College have been notified that the school's Radiologic Technology Program, which was implemented on campus last fall, has received final national accreditation status.

The accrediting agency is the Joint Review Committee on Education in Radiologic Technology (JRCERT) of the American Medical Association (AMA) in conjunction with the Committee on Allied Health Education and Ac-

creditation (CAHEA).

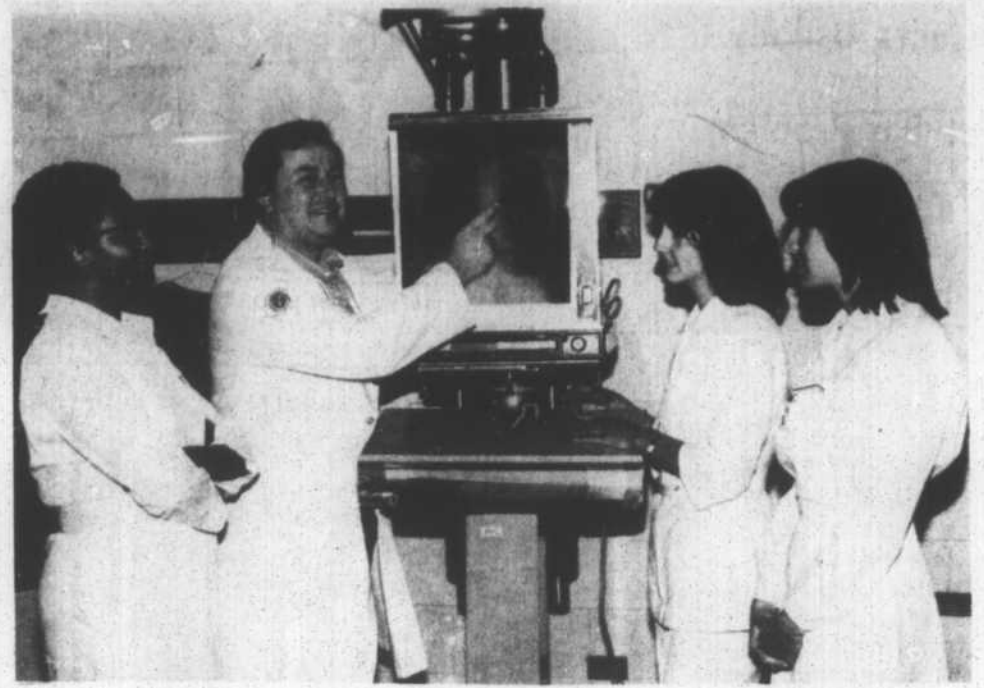
The accreditation status verifies that the program has complied with the stringent standards set nationally, therefore allowing graduates of the two-year program to sit for the national registry examination of the American Registry of Radiologic Technologists (ARRT). Each student who successfully passes the exam will be granted national certification, and then will be identified as Registered Technologist in Radiography, R.T.(R), according to C. W. Phaneuf, director of the program at VGCC.

These technologists may be employed by radiology (x-ray) departments in hospitals, clinics and private offices to perform x-ray examinations on patients.

VGCC's Radiologic Technology also awards graduates with the Associ-

ate in Applied Science Degree in Radiologic Technology. Besides immediate employment opportunities afforded them, graduates may also pursue further education in other advanced areas such as nuclear medicine, as well as transferring their two years of college credit to certain institutions to complete a bachelor's degree.

In addition to classwork and lab training on campus, VGCC RT students participate in clinical education at four hospital affiliates: Maria Parham Hospital, Henderson; Granville Hospital, Oxford; John Umstead Hospital, Butner; and Community Memorial Hospital, South Hill, Va. Plans are presently being formulated to include the Veterans Administration Hospital in Durham as an addition affiliate so that students may be allowed to work with more advanced



LAB TRAINING — Charles W. Phaneuf, director of the Radiologic Technology program at Vance-Granville Community College, trains students how x-rays are read during a recent lab session on campus. Left to right are Debra Johnson of Louisburg, Phaneuf, Carolyn King and Scott Pinnell, both of Warrenton.

Mr. and Mrs. Wilbert Hargrove, Sr. announce the approaching marriage of their daughter, Ella Arlene, to Willie Lee Shearin, son of Mr. and Mrs. Floyd Shearin of Warrenton.

The ceremony will take place September 25 at the Red Carpet in Warrenton at 4 o'clock and the reception will follow.

All relatives and friends are invited to attend.



Long Day

A Venus day is longer than a Venus year, the National Geographic Society says. The planet spins on its axis once every 243 Earth days and orbits the sun every 224.7 Earth days.



TABLERITE "2nd BIG WEEK"

USDA INSPECTED

TABLERITE FULL CUT

BEALES OLD FASHION

QUANTITY RIGHTS RESERVED WE ACCEPT USDA FOOD STAMPS

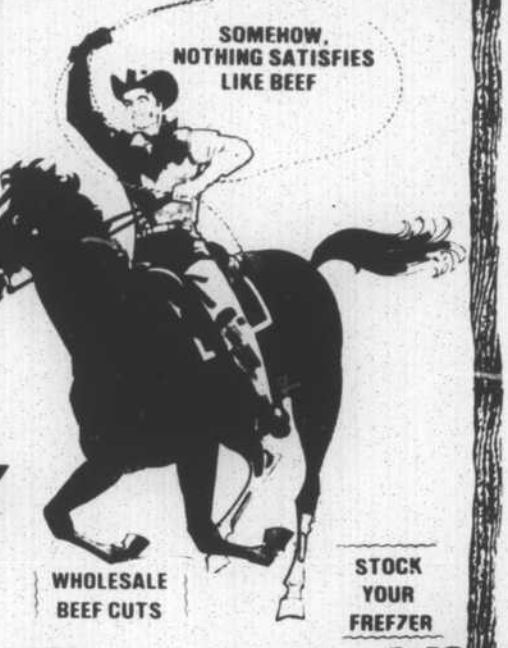


THIS WEEKS FEATURE: 9 OZ. JUICE 3/\$1.00
PRICES EFFECTIVE: June 3-4-5, 1982

BAKING HENS
49¢ LB

ROUND STEAK
1.98 LB

COUNTRY HAMS
1.49 LB



WHOLESALE BEEF CUTS

STOCK YOUR FREEZER

TOP ROUND STEAK BONELESS	2.58
BOTTOM ROUND STEAK BONELESS	2.48
SIRLOIN TIP or RUMP ROAST	2.78
T-BONE or CLUB STEAK	3.69
PORTERHOUSE STEAK	3.79
SIRLOIN TIP STEAK BONELESS	2.98
SANDWICH STEAK THIN CUT	2.98
BEEF STEW BONELESS	1.88
TOP ROUND ROAST BONELESS	2.38
BOTTOM ROUND ROAST BONELESS	2.28
GROUND ROUND STEAK	1.88

TABLERITE RIB EYE STEAK BONELESS	\$4.29 LB
TABLERITE CUBED STEAK "NO WASTE"	\$2.58 LB

TABLERITE SIRLOIN STEAK	3.39 LB
-------------------------	---------

TABLERITE GROUND BEEF PATTIES "READY TO COOK"	\$1.69 LB
TABLERITE BEEF LIVER "CENTER CUT"	88¢ LB

RIB EYES WHOLE 10 to 12 LBS AVG.	3.68
SIRLOIN TIPS WHOLE 9 to 12 LBS. AVG.	1.88
CHUCK ROLLS BONELESS CENTER CUT	1.68
SHOULDER WHOLE 20 to 25 LBS AVG.	1.78
BEEF LOINS 45 to 55 LBS AVG.	2.48
BEEF TOP ROUND 18 to 22 LBS AVG.	2.38
BEEF BOTTOM ROUND 20 to 25 LBS. AVG.	1.88
BEEF RIBS WHOLE LB	2.48
TOP SIRLOIN BUTTS 12 to 14 LBS. AVG.	2.48
NEW YORK STRIP 12 to 14 LBS. AVG.	3.48
GROUND BEEF PATTIES 9 LB BOX	14.99
TEE PEE SLICED BACON 1 LB PKG.	1.49
FRESH PORK SAUSAGE 1 LB ROLL	1.39
COUNTRY HAM-SHANK HALF 1 LB	1.59
BUTT HALF LB	1.69

IGA WHIP 8 OZ. BOWL	39¢
WHIP TOPPING	39¢
CHIEF-BOY-AR-DEE WITH MEAT BALLS 15 OZ. CAN	59¢

IGA MACARONI & CHEESE DINNERS 7 1/2 OZ. PKG.	4/99¢
--	-------

IGA BATHROOM TISSUE 6 ROLL PKG.	89¢
---------------------------------	-----

LUX DISHWASHING LIQUID 22 OZ. BOTTLE	68¢
--------------------------------------	-----

IGA SANDWICH BREAD 1 1/2 LB LOAF	3/\$1
KRAFT PARKAY MARGARINE 1 LB. PKG.	2/99¢
KRAFT AMERICAN SINGLES 8 OZ. PKG.	99¢

EDWARDS GRADE A LARGE EGGS DOZEN	65¢
----------------------------------	-----

IGA HOMOGENIZED MILK PLASTIC GALLON JUG	\$1.75
MAXWELL HOUSE INSTANT COFFEE 10 OZ. JAR	\$3.99
MASTER BLEND "ALL GRINDS" COFFEE 1 LB BAG	\$1.99

VIVA ASSORTED NAPKINS BOX OF 140	69¢
----------------------------------	-----

SHIELD BATH SIZE SOAP 2 BAR PKG.	79¢
BOUNCE FABRIC SOFTNER SHEETS BOX OF 60	\$2.79

IGA BUTTERMILK BISCUITS 4 PAK	69¢
-------------------------------	-----

TROPICANA ORANGE JUICE 64 OZ. JUG	1.29
-----------------------------------	------

WELCH'S GRAPE JAM or JELLY 32 OZ. JAR	1.19
---------------------------------------	------

WISK LIQUID DETERGENT 1/2 GALLON JUG	2.99
--------------------------------------	------

PUREX BLEACH 64 OZ. JUG	49¢
-------------------------	-----

IGA BROCCOLI SPEARS 10 OZ.	69¢
IGA ONION RINGS 16 OZ.	89¢
IGA PIE SHELLS	2/99¢
NABISCO OREO CREME COOKIES 19 OZ.	1.59
HUNT'S KETCHUP 24 OZ. BOTTLE	88¢
WESSON OIL 18 OZ. BOTTLE	1.59
POST HONEYCOMB 14 OZ.	1.49
BLUE RIBBON RICE 3 LB.	88¢
SAUERS BLACK PEPPER 1 OZ.	69¢
IGA TASTEES 15 OZ.	99¢
DIXIE CUP FUN SIZE REFRILL CUPS 100 CT	1.29



IGA ASSORTED SWEET GOODS 6 PK. 99¢	
GOLDEN RIPE BANANAS 3/\$1 LBS	
TENDER, YELLOW SQUASH 3 LBS.	1.00
CREAMY, WHITE CAULIFLOWER 1.39	
GOLDEN APPLES LB.	39¢
YOUNG SNAP BEANS LB.	59¢
TIGHT GREEN HEADS OF BROCCOLI BUNCH	89¢

APPLE SAUCE NO. 303 CAN	3/\$1
PEACH HALVES NO. 303 CAN	2/99¢
CUT BEETS NO. 303 CAN	2/88¢
MIXED VEGETABLES NO. 303 CAN	2/88¢

FRUIT COCKTAIL NO. 303 CAN	2/99¢
WHOLE GREEN BEANS NO. 303 CAN	2/88¢
CREAMSTYLE GOLD CORN NO. 303 CAN	2/88¢

EMBERS CHARCOAL 20 LB. BAG	\$2.29
----------------------------	--------

BLACK LABEL BEER 12 oz. 6-pak.	1.59
GENERIC CHEESE SINGLES 12 oz. pkg.	1.09
CHILLY WILLEE FREEZE POPS 12 - pak.	2/99¢
SEALTEST SOUR CREAM 16 oz. cup	89¢
GENERIC DOG FOOD 25 lb. bag	2.99
PLOCHMAN MUSTARD 10.5 oz. bottle	39¢
FROZEN STEAK FRIES 2 lb. bag	2/79¢
LITTLE DARLING CUT GREEN BEANS 303 can	4/1.00
SOUTHERN BISCUIT FLOUR 5 lb. bag plain or softening	85¢
YES LIQUID DETERGENT 32 OZ. BOTTLE	1.59
COTTONELLE BATHROOM TISSUE 4 ROLL PKG.	99¢