

**CURE FOR TUBERCULOSIS DEPENDS UPON RESEARCH**

Address of Dr. Lawrason Brown at National Tuberculosis Association, Santa Barbara, Cal., June 20.—At the opening here today of the nineteenth annual meeting of the National Tuberculosis Association, Dr. Lawrason Brown, Saratoga Lake, N. Y., president of the association, declared that one of the greatest needs of the tuberculosis campaign is more extensive research for the purpose of discovering a positive cure for tuberculosis. The long search and the scantiness of financial reward have discouraged many brilliant scientists from entering the tuberculosis field.

Dr. Brown said that a complete eradication of tuberculosis must follow along one of two lines. First, by vaccination or by some other method which will prevent tuberculosis completely, as smallpox is prevented today. If such a method fails, some method of treatment which is as successful as the administering of quinine in malaria must be discovered. Another possibility is that pulmonary tuberculosis, like leprosy and typhus, will gradually recede until in countries with a high hygienic civilization it will be of slight importance.

At the present time public education in disease prevention, increased sanatorium facilities, and adequate after care in order to prevent a relapse, are the best available means of still further reducing the mortality and case rates.

"I am convinced," continued Dr. Brown, "that in a few years, if tuberculosis ceases to decrease as rapidly as it is doing today, we shall see established in America, a foundation, that will do for tuberculosis what the Rockefeller Institute and other foundations are doing for general medicine. Such a foundation must maintain a hospital where the best and most modern treatment can be applied. It must have well equipped and extensive laboratories; it must command the services of the foremost experts in many lines, and they must be paid salaries commensurate with their position."

The man who knows enough to keep his mouth shut, generally draws healthful breath as well as a good salary.

**TODAY'S EVENTS.**  
**Wednesday, June 21, 1923.**  
 Centenary of the birth of General Edward B. Potter, noted Union civil war commander.  
 The city of Halifax, N. S., today enters upon its one hundred and seventy-fifth year.  
 Mexico keeps a holiday today in celebration of the anniversary of the taking of the City of Mexico by Gen. Diaz in 1837.  
 At St. Louis tonight President Harding is to make the first of the series of fourteen addresses he is to deliver en route to the Pacific Coast.  
 The steamship Muenchen recently completed for the North German Lloyd Line is to sail from Bremerhaven today on her maiden voyage to New York.  
 The statue of Abraham Lincoln in front of the United States courthouse in Washington, D. C., first erected in 1868, is to be rededicated today with interesting ceremonies.

**Carolina Pharmaceutical Show Next Week.**  
 The final plans for the Carolina Pharmaceutical Show at Greenville, South Carolina, next week have been completed. The North Carolina Pharmaceutical Association and the South Carolina Pharmaceutical Association will hold their separate conventions and joint meetings at the same time.

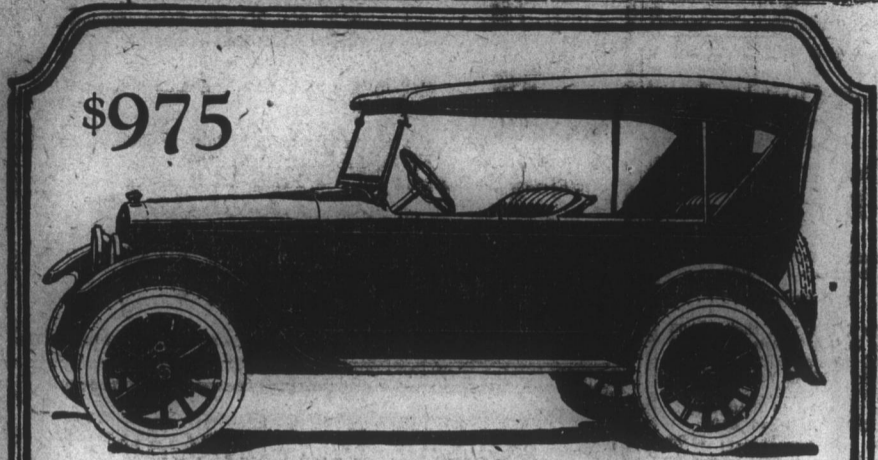
A great many of the largest wholesalers in the country will make exhibits.

Everything that is sold in the drug store will be displayed.  
 The Convention will open on Tuesday morning, June 26th, at 10:30 o'clock. Addresses will be made by prominent speakers. The first business session will be held Tuesday afternoon. The show will open Tuesday at 3 o'clock. On Tuesday evening there will be a musical entertainment in which Miss Virginia McKnight, Miss Mabel Lee Stover and the Greenville Chamber of Commerce Glee Club consisting of Messrs. Timmons, Barfield, Mawdin and Rabb will participate.  
 On Wednesday there will be business sessions and a luncheon in Textile Hall given by the Greenville druggists. Wednesday afternoon there will be a picnic on Paris Mountain and a visit to the baseball game between Charlotte and Greenville. Complimentary tickets will be given to the visiting druggists. Wednesday evening the Traveling Men's Auxiliary of South Carolina gives a banquet to the visiting druggists and their families. Gov. T. C. McLeod of South Carolina, will be the principal speaker.

A great number of valuable attendance prizes have been donated by large manufacturing houses. Each druggist upon arriving will receive a serial number and the prizes will be awarded from day to day—drawings to take place from all these serial numbers whether the druggist remains in Greenville or not. Therefore all visiting druggists are urged to register at Textile Hall upon arrival.  
 The officers of this show are: J. C. Armstrong, general chairman. J. Lee Carpenter, Chairman, L. H. Stringer, R. M. Dacus, Executive Committee.  
 W. Hayne Perry, Manager. D. B. Stover, Auditor.

**Efird Chain Sale Success in Concord.**  
 The Efird Chain Special, a newspaper devoted to facts about Efird stores and the cities in which they are located, carried the following article:  
 A. E. Harris, manager at Concord, writes:  
 "The Chain Sale has gone over 100 per cent. Crowds of people continue to fill up our store day by day.  
 "We are kept busy early and late filling in stocks and marking down prices.  
 "The volume of business has already surpassed our estimates for the month."  
 Efirds, Concord, Cabarrus County, North Carolina, is located in the heart of the great agricultural and manufacturing center of the Piedmont section, with 35,000 people surrounding it. Concord is one of the textile centers of North Carolina. Its mills are among the most modern in the south, and among the oldest in North Carolina. Over \$55,000,000 a year is paid out here to mill employees. Over \$15,000,000 is paid out for materials used by the mills and \$30,000,000 of mill products are made here annually, thus adding \$10,000,000 net to our county's resources. Our bank resources are \$5,000,000. Concord has five excellent school buildings moderately equipped in every respect, which furnishes our boys and girls an excellent foundation for college. Concord has one of the best public libraries in the state. Concord has a system of churches that cares for every community center in the city. Efird's, Concord was the second link in the chain of thirty-three stores. For fifteen years we have enjoyed a prosperous business from the people of Cabarrus county for which we are very grateful."

**Ex-Governor R. A. Cooper to Head Farm Loan Board.**  
 Washington, June 19.—Announcement was made today at the White House that on July 3 President Harding would designate Robert A. Cooper, former governor of South Carolina, now vice commissioner and executive vice commissioner of the Federal Farm Loan board as commissioner and executive officer of the board, succeeding Charles E. Lobdell, resigned.  
 Mr. Cooper is a Democrat. His spot after July 3 as vice commissioner will be filled by Elmer S. Landis, of Ohio, a Republican member of the board.  
**Practical Joke Ended Love.**  
 My first love affair ended when the boy of my dreams attached a fluffy lamb's tail to a piece of wire and fastened it in my sweater. Unaware, paraded down the main streets of the town.—Exchange.



\$975

THE STUDEBAKER LIGHT-SIX TOURING CAR  
**A Real Achievement in Dollar-for-dollar Value**

The thousands of Studebaker Light-Sixes in daily use are the best possible assurance of what may be expected next year—or several years hence—of the Light-Six you buy today.

For after all, the best way to judge a new motor car is by what it has done—how it has stood up in service—the satisfaction it has delivered.

We sincerely believe that the Light-Six Touring Car, with its improved all-steel body, is the sturdiest, handsomest, most comfortable, most dependable and economical low-priced car built.

The machining of all surfaces of the crankshaft and connecting rods, to which is largely due its practical absence of vibration, is a practice used by Studebaker exclusively on cars at this price and is found only on a few other

cars whose selling prices are from three to ten times as high as the Light-Six.

The one-piece, rain-proof windshield with parking lights set in the base, is a joy to the driver—nothing to mar his view of the road ahead. Deep, fat cushions are upholstered in genuine leather. Curtains, bound on three sides by steel rods, open with the doors and provide closed car coziness in bad weather.

The most seasoned driver will find a new thrill in the smooth, quiet, steady performance of the Light-Six—and in its ease of handling, and in the way it performs in high gear at low speeds—eliminating constant gear shifting.

The name Studebaker has stood for high grade transportation, quality, value and integrity for 71 years.

Power to satisfy the most exacting owner  
**STUDEBAKER**

MODELS AND PRICES—f. o. b. factories		
LIGHT-SIX 5-Pass., 112" W. B., 40 H. P.	SPECIAL-SIX 5-Pass., 119" W. B., 50 H. P.	BIG-SIX 7-Pass., 126" W. B., 60 H. P.
Touring \$975	Touring \$1275	Touring \$1750
Roadster (5-Pass.) 975	Roadster (5-Pass.) 1230	Speedster (5-Pass.) 1835
Coupe-Roadster (5-Pass.) 1225	Coupe (5-Pass.) 1975	Coupe (5-Pass.) 2550
Sedan 1550	Sedan 2050	Sedan 2750

Terms to Meet Your Convenience

Auto Supply & Repair Co.

THIS IS A STUDEBAKER YEAR

**KNOW YOUR OWN STATE**

**North Carolinas' famous Chimney Rock**

You certainly don't know North Carolina if you've never been to Chimney Rock! It is on the Asheville-Charlotte Highway, Asheville, 26 miles; Hendersonville, 19 miles.

There are few views as remarkable and easily accessible anywhere in the country as that from Chimney Rock. Far below lies Hickory Nut Gorge. Then there's Needle's Eye, Blockader's Lookout, Devil's Head and other points of interest that go with "the trip". Better make it soon!

If, perchance, you plan to spend more than a day in the vicinity, run over to beautiful Lake Junaluska.

"Standard" is a balanced gasoline which will go a long way toward making every trip a complete success. You can always depend on "Standard" for full power and mileage, quick starting, nimble pick-up and a clean-burning mixture.

Along the principal highways in every direction you'll find those pumps with the red "S.O." that give you the quality gasoline—made in the Carolinas. You can safely stick to "Standard".

**STANDARD OIL COMPANY**  
(New Jersey)

**"STANDARD" Gasoline**

**Endurance Test of Pee Gee Mastic Paint**

This house—one of the finest in Toledo—was painted several years ago with Pee Gee Mastic Paint.

Instead of repainting it, the owner had it washed at two different times. The results surprised even the experienced painters, as the paint stood this rigid test perfectly.

Only a paint that produces a tile-like film, such as Pee Gee Mastic Paint, can be successfully washed.

This exceptional durability of Pee Gee Mastic Paint is the result of purest and highest grade materials. A full 50% of zinc ground in genuine Linseed Oil and White Lead goes into the making of Pee Gee Mastic Paint.

It is the most economical paint for you to use on account of its great covering capacity and long years of service.

For every surface that needs protection specify



Home of W. J. Waidling, Toledo, O.

Ask us for FREE Paint Books and Color Cards or write to Pease-Gault Co., Inc., Louisville, Ky.

Ritchie Hardware Co.,  
 Concord, N. C.



Varnishes—Stains—Emulsions