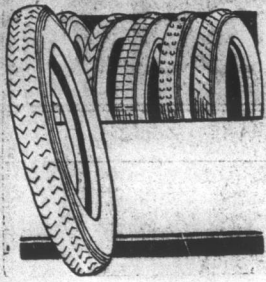


Motor Service Insurance Without Cost

Is Secured by Equipping Your Car With a Battery and Tires of Proven Excellence and Attending to Oiling and Greasing and Washing



GOODYEAR TIRES

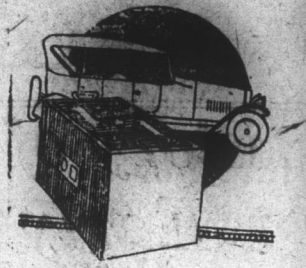
The name Goodyear is synonymous with automobiles and has done more to popularize motoring than any other factor. Goodyear tires, if given ordinary fair attention are an insurance against all tire troubles.

HOW WE CAN HELP YOU

To oil and grease a car thoroughly so that the oil will reach the bearings is a dirty job. Wheels get out of alignment. Washing a car is a sloppy job. Keeping the battery up to top standard needs special knowledge and even tires need expert attention. It is our pleasure to take all of these cares off your mind.

WILLARD BATTERIES

ASK THE MEN WHO USES THEM WHAT THEY THINK OF WILLARD BATTERIES They will give you a line of straight talk, that will make you wonder why you didn't instal a Willard long ago. When you are ready to change we are ready to servq you.



Southern Motor Tire Service Co.

PHONE 802

CONCORD, N. C.

PHONE 802

HISTORY OF STONEWALL TRAINING SCHOOL

(Continued from page 37)

the good people of Concord Mrs. D. L. Post, who got busy and through her Study Club presented a splendid large range with the necessary cooking vessels, complete.

Then came Mrs. John K. Patterson, through her Boys' Bible Class of Central Methodist Church, donating the furnishing for the officers' bed-room in the first cottage.

A Glad Day.

By all these goodnesses of local women and the generosity and liberality of folks in Thomasville, High Point, Salisbury and Charlotte, by innumerable personal sacrifices and hardships, and many a heart-ache, the management won the race, with two days to spare.

On the 12th day of January, 1909, the Stonewall Jackson Manual Training and Industrial School, for wayward and unfortunate boys, under 16 years of age, was opened; and on that day the city of Burlington furnished the first pupil.

Celebrating the opening, invitation had been sent out to a large number of people in the state and hundreds responded. The idea of a shower was involved in the invitation. Quoting a pessimistic woman, the shower "did not prove torrential," but the towels, napkins, disk rags, big forks, big spoons, soda, soap, pepper, salt, etc., made a pile, roomy high, representing a value way up in the hundreds of dollars—most acceptable and necessary articles.

Other Donors.

Substantial money gifts for specific purposes have been made by Gen. R. F. and Mr. Van Wych, Hon. Col. F. B. McDowell, Mr. Caesar Cone, Mr. and Mrs. W. N. Reynolds, Hon. J. A. Long, Gen. Julian S. Carr, Col. A. H. Boyden, Mr. D. A. Tompkins, Asheville Lumber Company; Mrs. R. R. Cotton; The Cone Commission Co., donors of every yard of denim used for overalls since the establishment of the school; Mr. and Mrs. G. T. Roth, of Elkin, furnished all the funds for the erection of the Industrial Building; Mrs. Stonewall Jackson; Col. Alex Breard; Miss Easdale Shaw; Mrs. D. Y. Cooper; The King's Daughters and Sons of N. C. furnished all the funds for the erection of the attractive Granite Chapel, which today would cost \$25,000, and the same organization furnished five thousand dollars on one cottage, and is now engaged in raising of four thousand dollars for the construction of a memorial bridge; the Stonewall Circle of King's Daughters, of Concord, donors of a \$1,200 set of brass band instruments; Men's Club, of the Second Presbyterian Church, of Charlotte, furnished \$24,000 for the erection of a cottage home; also the county of Guilford is furnishing twenty-four thousand dollars for the erection of a cottage home; and Mr. J. B. Sherrill gave an extremely liberal price and easy terms for a Babcock Press, used in printing The Uplift.

During the twelve years since the opening of the school, there has been made to the institution gifts, in kind, useful and necessary, reaching a value of thousands of dollars—these, in fact, have kept the "head above water."

MATERIAL POSSESSIONS AFTER 15 YEARS' EFFORT.

Three hundred acres of ground, formerly a cotton plantation, much of it now approaching a high state of cultivation under wise management, was the absolute gift of citizens of Cabarrus county in 1907. Through it flows a considerable branch, making pastures practicable; and just rolling enough to give a perfect drainage.

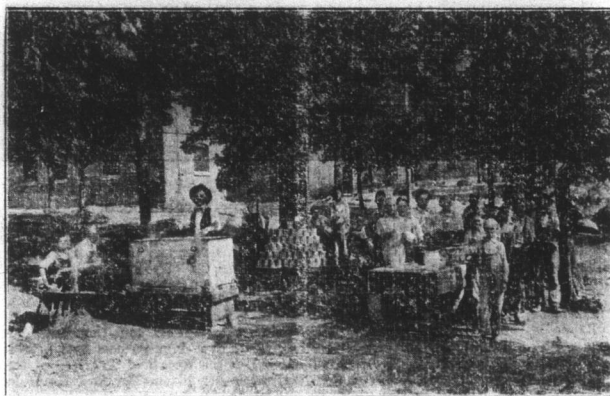
The campus, where the buildings are located and where others will be erected from time to time, overlooks the National Highway and the main line of the Southern Railway between Washington and Atlanta. Over these routes, there are passing daily dozens of trains, and hundreds of local and touring cars from every section of the United States.

Though situated in the country, three miles South of Concord, (as the law requires) the institution is not hid, and it is never lonesome—it is real life.

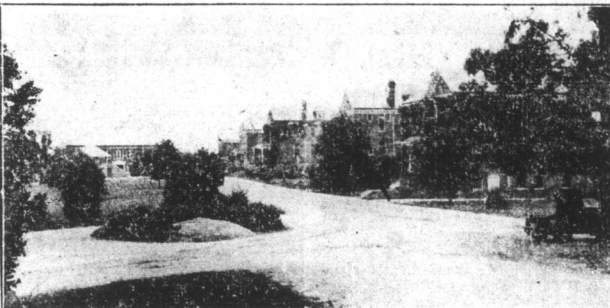
When this plantation was purchased, an elegant gentleman of Concord, one who is a large land-owner and is a first-class agriculturist, remarked: "you have possibly the poorest place in the county." Some time later, when agriculturists learned more about mother earth, and it had been demonstrated that all kinds and conditions of soil yielded to a wise treatment, scientifically and otherwise, this gentleman revised his opinion. The fact is, the crops raised on the J. T. S. fields are a little short of wonderful; and this has been accomplished in practically nine years.

To be entirely frank, the uppermost idea with the Board of Trustees at the time of locating the institution was the securing of a home graciously and one so situated that it would be convenient, but above all where the character of the

CANNING TOMATOES AND BEANS

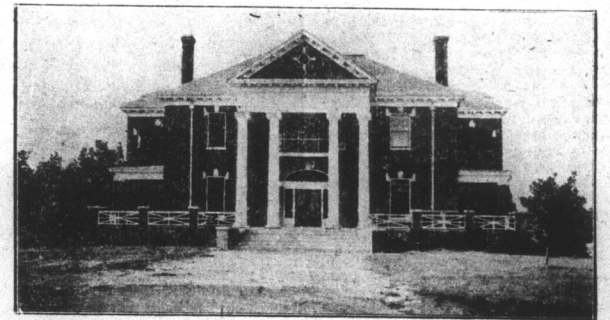


Boys at Jackson Training School Canning Beans



VIEW OF THE CAMPUS.

Pretty Scenes at the Jackson Training School Campus. THE CANNON MEMORIAL BUILDING



Contributed by Mrs. J. W. Cannon at a Cost of \$50,000 to the Fine Group of Buildings Comprising the Jackson Training School

water was pure, where the atmosphere was clean and where good health prevailed. These have been abundantly secured. So far as this writer personally knows or is informed, a case of chills or malaria in the neighborhood has never been known. The doctors' bills do not reach a hundred annually—most of this on account of slight accidents occurring from youthful and manly sports.

The View From Campus.

There is nowhere in the state to be had a more beautiful view than from the grounds of the J. T. S. campus. It is in a class to itself. For miles, in every direction, the naked eye takes in the far removed horizon, which seems just the fringe of a huge canopy hung over this one spot. The elevation is such that trains, pulling out from the station at Charlotte (17 miles distant) may be followed by the eye, traced by day by the smoke, and at night by the headlight.

Practically Nudge of Buildings.

On this old plantation there was found only a small, dilapidated old farm house approaching the worthless stage; a small barn, unkept; and a shell of a building used for a commissary for the benefit of the quarry on the place, worked at one time for ballast for the Southern Railway. This shack was the first home of The Uplift. Relocated, added to and somewhat modernized, it has become the little "white house" of the plant and serves the purposes of a hospital—a service very rarely needed except when a boy (a newcomer) develops a sickness appearing suspicious and thus requires caution and care. This then was the sum total of what the institution had to start with.

What Is New in the Plant.

Let us enumerate:

1. Four cottage homes complete and in use; a fifth cottage (Mecklenburg Cottage) nearing completion; the sixth (Guilford Cottage) being arranged for; and two others practically assured. These, then, constitute the present living quarters for pupils. The present capacity of the four cottages in use is 120 boys; but by economy of space, the large use of the honor system, and without crowding, these four cottages are now providing homes for 133 boys. In not many weeks, the capacity will have been increased to 192.

2. The Administration Building, located at the head of the campus and near the entrance, is both attractive and substantial. It serves, and was so intended when planned, as the living quarters of the superintendent and his family; rooms for the business offices and for the reception of business visitors; sleeping apartments for the several ladies employed in the conduct of the institution and for other officers not provided for in the cottage homes. It is equipped with modern conveniences.

3. The Roth Industrial Building, donated by Mr. and Mrs. G. T. Roth, of Elkin, N. C. as a memorial to their mothers, is among the most useful of the entire plant. When Mr. Roth rode up in front of the first home of The Uplift, inquiring for a certain issue of that paper, which contained an item wishing for a certain building and desiring a gift from some unknown source, he read it aloud and remarked: "here's your man." There are times, when one can

A. F. HARTSELL
President

P. H. SCARBORO
Vice P resident

R. Z. BENTLEY
Secretary-Treasurer



QUALITY

SERVICE

If we can leave the Wholesale Grocery Business just a little better than we found it, and we certainly hope to, everyone with whom we come in contact will be a little richer, and what better way can we hope to improve it than by justifying the confidence of those who made our existence possible.

When we receive an order from you it means more to us than a mere written request for Wholesale Groceries. We like to think and we know we are absolutely right when we do think this way, that someone must have faith in us.

It is hardly reasonable to believe we would take a willful chance on losing that faith, and it is this display of confidence on your part that acts as an incentive that we give the best we have at all times. You can, therefore rely upon it "That what we say it, IT IS."

Diamond Tires—Exclusively Wholesale

A. F. HARTSELL CO.

WHOLESALE GROCERS

Manufacturers' Agents

CEREALS, CAN GOODS, CIGARS AND TOBACCO

J. A. WALKER

"The Cement Man"

Contractor for Concrete

Construction

Phone

321

scarcely believe his own eyes and trust his own ears; but this was not that time. That kind-hearted, earnest little gentleman issued the instruments of writing in a very short time that brought the money that paid for the entire building, even declining to accept a complimentary subscription to The Uplift, but insisted and did pay the price. The glory of the occasion of that event abides with us continually.

There is housed in this structure a first-class, wood-working outfit; storage room for raw material; The Uplift printing plant; two rooms above have been used until recently for music purposes, but intended for a shoe hospital and will soon be used for the purpose; and the pumping outfit is controlled from this point.

4. A modern barn, largely made possible. (Continued on Page Thirty-nine.)

A CANNING SCENE



Boys at Jackson Training School Canning Beans