

# Scenic Beauty And History Of Utah Described By Youthful Visitor

## Ski Lift Among Many Unusual Places Visited

Salt Lake City Rich In Historical Beauty: Buildings Are Unusual

By Billie Anderson, Age 12

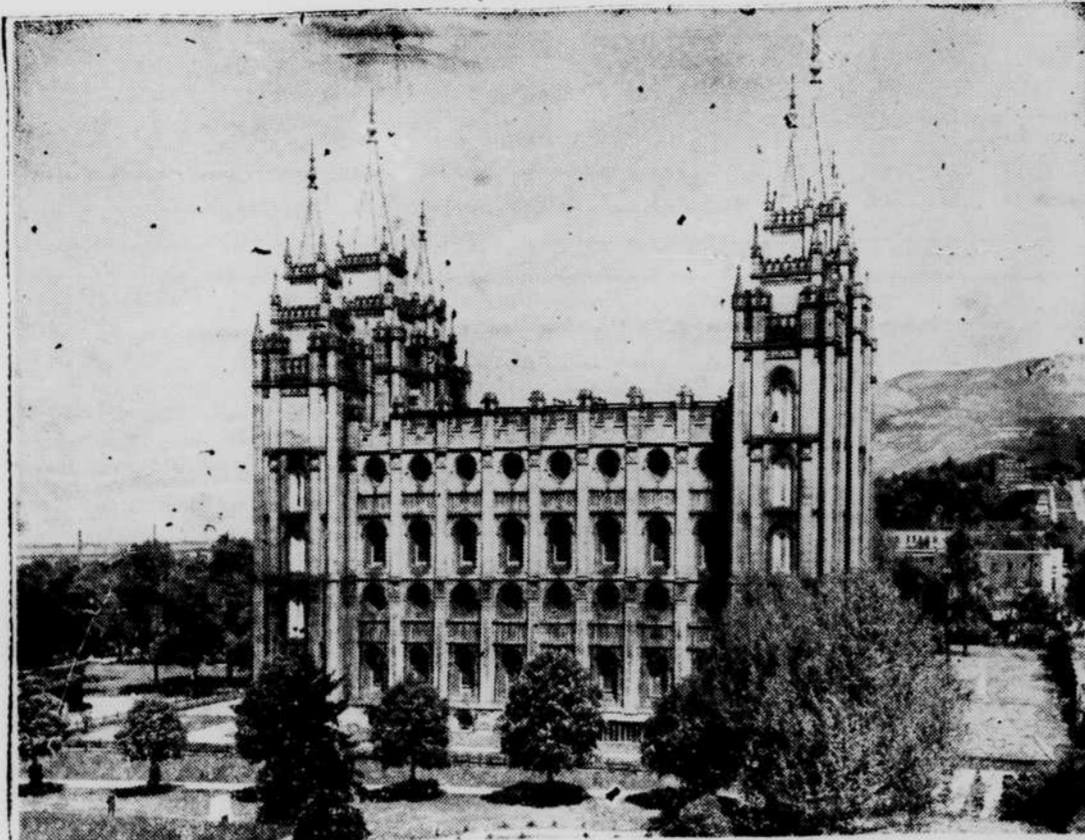
Geography has always been a fascinating subject to me and to be able to make a trip across the country by air and rail, when I attended the National Editorial Association Convention in Utah recently with my father, Ed M. Anderson, a director, was much more thrilling than classroom lessons. Our itinerary included twelve states and it took us two nights and a day and a half to get to Salt Lake City, Utah, the scene of the convention.

The first impressions we gained were by a city-wide tour. Later we had the opportunity of seeing in detail some of the most noted attractions.

Located in the city is the state capitol, standing at the feet of one of the many beautiful mountains. As we entered the capitol building we came into a very spacious room with paintings of the pioneers and Brigham Young coming into the valley on the walls and ceiling. Off at the left, we were told, were the Senate and Congress chambers. We were then taken to the museum.

The museum had many fine collections such as a cradle slept in by some of the first pioneers, wagons like they came in and pieces of their china. There were also some very beautiful dresses worn in that period, which I liked very much. From there we

## Salt Lake City's Beautiful Six-Spired Mormon Temple



This great granite structure stands as a monument to Brigham Young and the Utah pioneers. This historic temple was begun in 1853 and completed in 1893.

were taken upstairs to the hall, where in the plaster there were many designs — one a very realistic design of Santa Claus.

Then we were taken to the room in which the governor sees special people. We were told it has been called the "Gold Room" for it is done in gold and is very beautiful. We then left the capitol to travel on.

From there we were taken to Temple Square to see the great

Mormon Temple. Construction on it began in 1853 and it was finished in 1893. It was designed by Brigham Young and the architect was Truman O. Argett. The building is 1,361 1-2 feet long and 1,181 1-2 feet wide.

On top of the east tower is a large golden figure which represents Mormon, a book of Mormon character. It is 12 feet, 5 1-2 inches high. It is made of hammered bronze covered with gold leaf. It was done by Cyrus E. Dallin, who was from the State of Utah.

The temple is built of granite taken from Little Cottonwood Canyon about 20 miles from the temple site. Before the railroad was constructed in 1873, ox teams were used to transfer the materials for it. The foundation walls are 16 feet thick, the basement walls are 9 feet thick and the main walls are 3 feet thick. The cost of the temple is estimated at \$3,500,000.

It can be entered only by members given permission by the Archbishop, so we did not see the inside.

In Temple Square is also the Tabernacle which, too, was designed by Brigham Young. It has a capacity of 8,000 although on special occasions it can hold 11,250.

The dome-shaped roof contains more than a million feet of lumber. When it was first constructed this lumber was held together with wooden pegs and cowhide thongs. The original shingles were replaced with metal in 1900 and in 1947 the building was re-roofed with aluminum.

The famous Tabernacle organ, which we heard on Sunday, was started in 1865 and was completely finished in 1874 with 2,600 pipes. It was constructed of yellow pine and mountain mahogany. In 1915 it was reconstructed with 6,868 pipes. The pipes run in size from 5-8 of an inch to 32 feet. The original organ was hand carved and hand built. At that time it was the largest in the U. S., which is no longer true. The builder was Joseph Ridges, born in England. The first organist was Joseph J.

Danes. In 1948 the organ was completely rebuilt. The console was changed from four to five keyboards and the pipes were changed from 6,868 to 10,818.

The tabernacle choir was started by Brigham Young with 320 voices. That number has been kept ever since. Around the world there are 1,940,000 members of the Mormon religion. Somewhat less than one-half of that number live in the State of Utah.

We also had the privilege on Sunday afternoon to go to Kennecott Copper Mine, the largest open-cut copper mine in North America, which produces about 3 per cent of our copper. Operation began in 1904 and except with just a few interruptions it



—(Clyde Anderson, Salt Lake City, Photo) MAN-MADE WONDER—This, the largest open-cut copper mine in North America, is the major mining operation of Utah. The Utah Copper Division mine of Kennecott Copper corporation at Bingham Canyon, Utah, provides about 30 percent of America's newly mined copper in normal times. The excavation covers approximately 855 acres, from which a total of 1,173,321,423 tons of both waste and ore have been removed. Kennecott operations constitute a substantial factor toward Utah's prosperity.

has been going ever since. The mine covers approximately 855 acres from which a total of 1,173,321,423 tons of waste and ore have been removed. The mine has 45 levels averaging about 70 feet high and varying from 70 to 250 feet wide. There are 138 miles of standard gauge railroad track at the mine. Normally the mine employs approximately 2,400 men. The annual payroll is approximately \$6,000,000. If you like salt you should have been with us when we went

swimming in the Great Salt Lake. If you wonder why one can float like a cork, it is due to a 27 per cent salt content. Salt water is heavy and it won't let you sink. The group went over to Geneva steel works, but I had a very bad cold and didn't go, but slept instead.

The most thrilling place which we visited on the entire trip was Brighton, twenty-five miles from Salt Lake City, where one climbs from an altitude of 4,255 to 8,729 feet in a ski lift.

There are chairs on cables run by a motor. We all had the privilege to ride up on it at a much slower speed, and were able to take some good pictures. The snow-capped mountains in early summer were an unusual sight for me.

I urge everyone, who has the privilege to go to the State of Utah to be sure and see these and many more beautiful places. It's a very beautiful State and I think each and everyone who had a part in making it a wonderful trip. I know you would have liked it, too.

## Two Ashe Youths Enlisted In Navy

There has been a steady increase in the number of enlistments in the Navy from this recruiting area during the past two months, it was reported by Chief Machinist's Mate A. N. Whaley, U. S. N., Recruiter in charge of the U. S. Navy recruiting substation, Lenoir.

He stated that enlistments during June totalled 132 in the area, of whom 101 were first enlistments for three years or more, 23 were 18-year-olds who enlisted for one year of active duty and 8 were reenlistments of former Navy personnel.

There were five men accepted from the Lenoir sub station, all of whom were enlisted three years. Those from Ashe were Ray Edward Osborne, West Jefferson; William Edward King, Creston.

Come to  
**SEGRAVES MOTOR CO.**  
Jefferson  
For Expert and Prompt  
Radio repair by former  
Air Force Radar Technician.  
**WORK GUARANTEED**

**"CAN I CUT THE COST OF MY AUTO INSURANCE?"**

If you're a select risk driver you can qualify for economical protection with Farm Bureau Mutual Automobile Insurance Co., Columbus, Ohio.

- Select risk company
- Automatic renewals
- Owned by policyholders

Leonard Shepherd, Jefferson, N. C.

**SAVE TIME VIA GREYHOUND'S Express Service**

NO LOCAL STOPS  
AIR-CONDITIONED BUSES

MAP SHOWING ROUTES OVER WHICH GREYHOUND OPERATES TIME-SAVING EXPRESS SCHEDULES—GOING STRAIGHT THROUGH WITHOUT LOCAL STOPS

CLEVELAND, PITTSBURGH, WASHINGTON, NEW YORK, PARKERSBURG, WHEELING, NEW MARKET, HARRISONBURG, CHARLESTON, STAUNTON, LEXINGTON, ROANOKE, RICHMOND, HUNTINGTON, BECKLEY, BLUEFIELD, WYTHEVILLE, S. BOSTON, LYNCHBURG, DANVILLE, PETERSBURG, SOUTH HILL, KNOXVILLE, BRISTOL, GREENSBORO, RALEIGH, HENDERSON, WINSTON-SALEM, FAYETTEVILLE, ASHEVILLE, STATESVILLE, CHARLOTTE, HENDERSONVILLE, SPARTANBURG, BENNETTSVILLE, GREENVILLE, COLUMBIA, FLORENCE, ATLANTA, GAINESVILLE, SUMNER, AUGUSTA, WALTERBORO, CHARLESTON, SWAINSBORO, SAVANNAH, WAYCROSS, BRUNSWICK, JACKSONVILLE

Frequent local service between Express points

UNION BUS TERMINAL West Jefferson, N. C.

Phone 96

**GREYHOUND**

Use  
**Blue Dragon Dust**

For the control of Mexican Bean beetle, Cabbage worms and other insect pests.

1 LB. PKG.	\$.25
4 LB. PKG.	.90
25 LB. BAG	4.00
50 LB. BAG	7.50

4 LB. COPPER DRAGON TOMATO BLIGHT DUST \$1.00

Ray Hardware Co  
West Jefferson, N. C.

**HERE'S THE LOWER-PRICED CAR MILLIONS HAVE WAITED FOR!**

**The New DODGE WAYFARER**

Treat your eyes to something special in style and beauty . . . and your pocketbook to the biggest car value in years!

In the new Dodge Wayfarer you get roominess for six . . . with elbow room for all. You get room to stretch legs, room for your head and hat . . . seats that are knee-level to support your body in relaxing comfort. You get the flashing pick-up of the more powerful Dodge "Get-Away" engine . . . plus the proven smoothness of Dodge All-Fluid Drive.

Nimble as a polo pony, the 115-inch wheelbase Wayfarer is easy to maneuver in traffic . . . easy to handle in tight parking. Come in today. See this luxurious new Wayfarer —backed by the priceless Dodge reputation for delivering years of satisfying, money-saving miles. And remember—the Wayfarer costs just a few dollars more than the lowest priced cars!

with gylol Fluid Drive—"Get-Away" Engine  
Knee-Level Seats—Full Floating Cradled Ride  
Safe-Guard Hydraulic Brakes—Safety Rim Wheels  
Super-Cushion Tires . . . at no extra cost!

**COME IN...find out about AMAZING LOW PRICES**

Start just a few dollars more than the lowest priced cars

**NEW WAYFARER ROADSTER**—the smart good looks of a convertible without the high price and New light-weight top easily raised or lowered. Pleasure windows go on or off in a jiffy.

**NEW WAYFARER BUSINESS COUPE**—the personal car with amazing storage space behind front seat, huge luggage compartment under rear deck. Lower in price yet every inch a dependable Dodge!

**DUNCAN MOTOR CO. • West Jefferson, N. C.**