

UNIVERSITY DIRECTORY

GENERAL ATHLETIC ASSOCIATION.

George G. Stevens, President.
W. D. Carmichael, Vice-President.
Jas. A. Gwyn, Secy. and Treas.

UNIVERSITY FOOT-BALL TEAM.

E. C. Gregory, Captain.
Walter Brem, Manager.
J. H. White, Assistant Manager.

UNIVERSITY BASE-BALL TEAM.

B. E. Stanly, Captain.
W. D. Carmichael, Manager.

UNIVERSITY GLEE CLUB.

Prof. Harrington, Director.
Darius Eatman, Leader.
Pride J. Thomas, Business Manager.

ELISHA MITCHELL SCIENTIFIC SOCIETY,

Richard H. Whitehead, M. D., President.
Henry V. Wilson, Ph D. Vice-President.
Francis P. Venable, Ph D., Secretary and Treasurer. □ Charles Baskerville, Ph D. Corresponding Secretary. Meets in Person Hall the second Thursday night of each month. Journals issued twice a year.

HISTORICAL SOCIETY.

Kemp P. Battle, LL. D., President.
Geo. T. Winston, LL. D., First Vice Pres.
Edwin A. Alderman, Ph D. 2nd Vice Pres.
Holland Thompson, Secretary.

SHAKESPERE CLUB.

Thomas Hume, D. D. LL D., President.
Walter D. Toy, M. A., Secretary.
Herbert Bingham, Treasurer.
Herman H. Horne, Assistant Secretary.

PHILOLOGICAL CLUB.

Meets on the last Tuesday night of each month in the English Lecture room. Officers: K. P. Harrington, President, F. K. Ball, Vice-President, W. D. Toy, Secretary and Treasurer.

FRATERNITIES (SECRET).

Delta Kappa Epsilon, Beta Theta Pi, Zeta Psi, Sigma Nu, Sigma Alpha Epsilon, Alpha Tau Omega, Sigma Chi, Phi Gamma Delta, Kappa Sigma, Kappa Alpha, Pi Kappa Alpha.

SOCIETIES.

Theta Nu Epsilon (secret).
Pi Sigma (secret).
Order of Singholls (Junior secret). The society meets in February and October. Banquet Thursday night of commencement.
Philanthropic (secret, literary). Established 1795. Meets every Saturday night in the Phi Hall, New East Building.
Dialectic (secret) literary. Established 1795. Meets every Saturday night in the Di Hall, New West Building.

UNIVERSITY GERMAN CLUB.

E. C. Gregory, President.
Jas. A. Gwyn, Vice-President.
C. R. Dey, Secretary.
R. S. Busbee, Treasurer. Meets at call of President. Leader selected for each german.

UNIVERSITY MAGAZINE.

W. R. Webb, editor in chief.
Editors,
E. C. Gregory, Dick Lewis, Burton Craigie, D. Eatman, E. E. Sams.

Y. M. C. A.

H. H. Horne, President,
W. R. Webb, Vice-President,
J. S. Wray, Secretary.
R. E. Coker, Corresponding Secretary.
J. W. Canada, Treasurer. Meets in Chapel on Monday, Tuesday, Wednesday, Thursday nights of each week.

TENNIS ASSOCIATION.

A. W. Myers, President.
H. C. Bridgers, Vice-President.
Jas. A. Gwyn, Secretary and Treasurer.

Church Directory.

PRESBYTERIAN CHURCH.—Rev. D. J. Currie. Services every Sunday morning and night except the first Sunday in each month. Prayer meeting every Wednesday night.

EPISCOPAL CHURCH.—Rev. Paul Shubert. Services every Sunday morning and night.

METHODIST CHURCH.—Rev. L. S. Massey. Services every Sunday morning and night. Prayer meeting Wednesday night.

BAPTIST CHURCH.—Rev. Dr. Thos. Hume. Services every Sunday morning and night. Prayer meeting every Wednesday night.

The university Co-operative Society.

The Co-operative Society was organized by the students of the University, Nov. 15, 1894, for the purpose of getting books and athletic goods at lowest rates.

The Society's store was opened Jan. 4, 1895. From that date up to Nov. 8, 1895, the total amount of business done was \$5286.76

The amt. of dry goods, stationery, &c. including books sold to the Library U. N. C. 2100.00

The amt. of books sold students 3186.76
Total profits on all sales 341.87

Expenses of store, including salary of clerk 112.34
Net profits from all sales 229.53

Total profits on dry goods, &c. \$165.00 = 8.5 per cent.
Net profit on dry goods &c. \$109.09 = 5.00 per cent.

Total profits on books sold students \$176.87 = 5.4 per cent.
Net profit on books sold students \$120.53 = 3.7 per cent.

The price on nearly all the books has been reduced by from 5 to 5.25 per cent. A comparison of prices will show this. Up to last January the following prices obtained:

Wilson's State	\$2.00
Deschanel's Nat. Philosophy	1.55
Greek Text-books, e. g. Homer	1.60
Latin Text-books, e. g. Horace	1.50
Latin Text-books, e. g. Terence75
English Text-books, e. g. Hales and Gummere	1.10
English Text-books, e. g. Tennyson65-.75
Athletic Goods, e. g. Tennis Balls80

The present prices of these same goods are as follows:

Wilson's State	10 p. c. off \$1.80
Deschanel's Nat. Philosophy, 16½ p. c. off	1.25
Greek Text-books, e. g. Homer 9 p. c. off	1.45
Latin Text-books, e. g. Horace 6½ p. c. off,	1.40
Latin Text-books, e. g. Terence 6½ p. c. off75
English Text-books, e. g. Hales and Gummere, 4-11 p. c. off	1.00
English Text-books, e. g. Tennyson, 15-25 p. c. off55

These examples show about the average reduction—some the highest and some the lowest. In the case of many of these books, other dealers are now selling them at the Co-operative Society's prices, but in every case, at a lower price than ever sold here previous to Jan., 1895.

The Society, if continued, will sell at the above prices, and will do even better, under the patronage of the students.

The Society does business on a strictly cash basis, and in no other way could it give these prices.

The Society has already filled orders for books in Texas and Mississippi besides elsewhere in this state.

We would call attention to the fact that we have already sold about \$1000 worth of goods for Rogers, Peet & Co. the large clothing and outfitting firm in New York. We are selling all goods at New York prices, which means first-class goods at lowest figures. Satisfaction guaranteed in all cases or money refunded. Student's supplies of all sorts can be gotten by special order, at lowest rates.

The Society, during the past year, had a membership of fourteen. At the annual meeting, next Tuesday, a dividend of \$76.50 will be declared to these members. The annual meeting of the Society will be held in Gerrard hall next Tuesday evening, Nov. 26, immediately after the meeting of the Y. M. C. A. The bell will be rung. At this meeting the question of whether the Society shall be continued or not will be voted upon. All members of the University are urged to come to this meeting.

J. D. LENTZ,
Clerk of the Society.



OFFICE WORLD'S FAIR
Sept. 15, 1895

BLACKWELL'S DURHAM
TOBACCO CO.,
Durham, N. C.

Gentlemen:
We have Smoked up all the Tobacco at the World's Fair, and have unanimously awarded the Gold Medal for Smoking Tobacco to

BLACKWELL'S

Bull Durham

Congratulating you on your success, we remain Yours truly,

COMMITTEE.



Blackwell's Bull Durham
Has been the recognized standard of Smoking Tobacco for over 25 years. Uniformly good and uniformly first. Bright, sweet and fragrant—we invite the most fastidious to test its superior excellence.
Blackwell's Durham Tobacco Co., Durham, N. C.

EVERY FAMILY + SCHOOL + LIBRARY
STUDENT + + + +
PERSON WHO READS OR WRITES

SHOULD OWN A DICTIONARY.

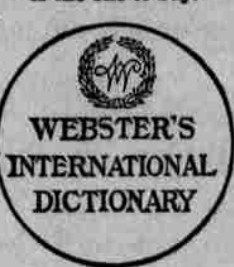
Care should be taken to GET THE BEST.

Webster's International, new from cover to cover, is the one to buy.

It is a thorough revision of the authentic "Unabridged," fully abreast of the times. The work of revision occupied over ten years, more than a hundred editors being employed and over \$300,000 expended.

SOLD BY ALL BOOKSELLERS.
G. & C. MERRIAM CO., Publishers,
Springfield, Mass., U. S. A.

Do not buy reprints of obsolete editions.
Send for free pamphlet containing specimen pages, illustrations, and full particulars.



Southern Railway

THE GREAT TRUNK LINE

and U. S. Mail Route

BETWEEN THE

**NORTH, SOUTH,
EAST and WEST.**

Operates three passenger trains daily to
**Washington, Baltimore, Philadelphia
New York and Points East.**

Three passenger trains daily for

Atlanta, Birmingham, Memphis, Chattanooga, Montgomery, Mobile, New Orleans and Points South and West.

The Short Line to Florida.

Through trains and Pullman Palace Sleeping cars to Columbia, Augusta, Savannah, Jacksonville and Tampa without change.

The Washington and South-Western Vestibuled LIMITED.

This train is composed entirely of Pullman Palace, Drawing Room, Sleeping and Dining Cars.

For rates, tickets, time tables, &c., call on any agent Southern Railway, or

CHAS. L. HOPKINS,

Trav. Pass. Agent,

Charlotte, N. C.

W. H. GREEN,

Gen. Mangt.

W. A. TURK,

Gen. Pass. Agent,

Washington, D. C.

University of North Carolina.

Offers thorough instruction in four regular courses of study, six brief courses, optional courses to suit individual needs, and professional courses in law and medicine.

Tuition \$60 a year; total expense \$250.
Over 500 students, 26 teachers, 40,000 volumes, 7 scientific laboratories and museums, gymnasium, athletic grounds, bath rooms (free to all).

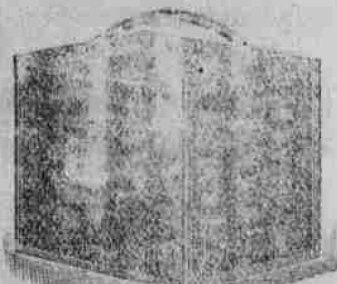
Disciplin manly, without espionage. Scholarships and loans to the needy.

Tuition free to sons of all ministers, candidates for the ministry, public school teachers, and persons under bodily infirmity.

Address **PRESIDENT WINSTON,**
Chapel Hill, N. C.

\$8.00

Size of
Pictures
3½x3½ in.
Weight
21 oz.



THE BULLET.

A roll film camera that hits the mark every time. It's a repeater too; shoots 12 times and can be

Reloaded in Daylight.

The Bullet is fitted with our new automatic shutter. One button does it all—sets and releases the shutter and changes from time to instantaneous. Achromatic lens. Handsome finish.

An Illustrated Manual, free with every instrument, explains its operation and tells how to finish the pictures—but "we do the rest" when you prefer.

EASTMAN KODAK CO.

Rochester, N. Y.

Camera Catalogue Free.



MANUFACTURED BY

W. DUKE, SONS & CO.,

BRANCH OF THE

American Tobacco Co.,

DURHAM, N. C.

