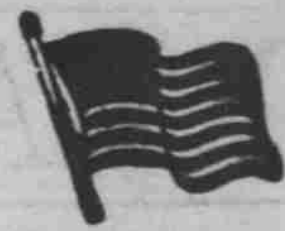


# The Tar Heel



Serving Civilian and Military Students at UNC

VOLUME LIII—SW

Business and Circulation: 3641

CHAPEL HILL, N. C., SATURDAY, MARCH 31, 1945

Editorial: F-3141, News: F-3144, F-3147

NUMBER SW—43

## NEWS:

- Coed Elections
- SP Offers
- Frats Pledge

## Women Greeks Elect Officers Of Sororities

### Four Groups Name Leaders For Year

Four of the five national women's social sororities on the Carolina campus elected officers for the year 1945-46 in elections held simultaneously Wednesday night. The sororities are Chi Omega, Pi Beta Phi, Delta Delta Delta, and Alpha Delta Pi.

The Alpha Delta Pi officers include: President, Emma Lee Rhyne; Vice-president, Kitty Boling; Treasurer, Edyth Pell; Secretary, Echo Patterson; Rush Chairman, Beverly Lee; House Manager, Viola Hoyle; Pan Hellenic Representative, Viola Hoyle; Corresponding Secretary, Inez Macklin; Guard, Betty Milford; Chaplain, Jane Gunter; Chapter Reporter, Alma Young; Historian, Bettie Gaither; Social Chairman, Inez Macklin.

Pi Beta Phi officers are President, Meadie Montgomery; Vice-president, Betty Strickland; Corresponding Secretary, Sara Jo Barnett; Recording Secretary, Margie Pullen; Treasurer, Chuck Henry; Pledge Supervisor, Lou Hull; Rush Captain, Snookie Phipps; Assistant Rush Captain, Tina Dicks; Historian, Mary Widener; Censors, Phyllis Hon and Martha Mallory; Pan Hellenic President, Betty Grimes; Activities Chairman, Nickie Nichol; Scholarship Chairman, Carlisle Cashion; Social Chairman, Bezie Russell.

Tri-Delt officers are as follows: President, Connie Hendron; Vice-president, Sara Stockton; Secretary, Jeanne Parry; Treasurer, Ruth Duncan; Marshall, Marion Kerr; Rush Chairman, Caroline House; Corresponding Secretary, Margaret Woodhouse; Custodian, Barbara Rogers; Ritualist, Betty Codrington; House President, Carroll Cone; Historian, Millie Pugh; Scholarship Chairman, Betsy Bowman; Social Chairman, Margaret Carmichael; Publicity Chairman, Ann Thornton; Representative to the Pan Hellenic Council and Representative to the Legislature from the Pan Hellenic Council, Rosalie Stonebraker; Activities Chairman, Linda Williams; Chairman of the Gift Committee, Pam Hotard; W.A.A. Council Representative, Margaret Burke.

The Chi Omegas elected the following: President, Tish Andrews; Vice-president, Elaine Bates; Secretary, Sara Robson; Treasurer, Corry Alexander; Pledge Mistress, Nancy Sub-

## Jurgensen To Be Pittsburgh Guest

Kai-Heiberg Jurgensen, assistant director of the Playmakers, will be guest speaker of the Pittsburgh Dramatic league Tuesday night, April 3, on the eve of the League's \$500 award to the winner of their annual playwriting contest. Chairman of the board of judges for the contest, Mr. Jurgensen will talk on the winning play and the contest in general.

The Pittsburgh Dramatic league is a philanthropic organization whose aim is to encourage American drama. A number of scholarships are given annually to high school students who show talent in the field of dramatic art.

## Social Fraternities Pledge 60 Men During Rush Period

Sixty men pledged social fraternities during the past rush period, March 23, 24, and 25, according to the list released by Dean of Men E. L. Mackie.

The Greek pledges are as follows: ATO—Adam Shirley Cretini, Lake Charles, La.; Glenn Perry Gasaway, Jefferson, Ga.; Henry Ford Harrell, Arlington, Ga.; Franklin Miles, Jacksonville, Fla.; Austin Smith Parker, Charleston, S. C.; John Davis Perryman, Lecanto, Fla.; William Wade Walker, III, Atlanta, Ga.

Beta Theta Pi—Lawrence Porter Johnson, Norfolk, Va.; Arthur Wendell Lamb, Indianapolis, Ind.; James Fraser Lodge, Bolivar, Mo. Chi Psi—Marshall Eugene Cline, Jr., Newton; Robert H. Edwards, Seaside, N. Y.; Clifford Edward Harp, Miami, Fla.; Clyde Leonard, Jr., Wilmington; Barrett George Payne, Jr., Charlottesville, Va.; Duncan St. Clair, Char-

## SP Offers Jim Traynham As Army Calls Andrews

### Veteran Politician Fills Vacancy Left By Recent Nominee

Replacing Wally Andrews on the Student Party slate, the candidacy of Jim Traynham for the vice-presidency of the student body was announced last night.

This move was necessitated by the acceptance of Andrews for military service after he had previously been rejected twice.

Traynham is a present member of the Council having served on that body for the past year, making his length of service to the student body in that capacity among the longest of any of the Council members.

Traynham is also in the Student Legislature, representing Battle dormitory. Additional activities include membership in the CRIL, Alpha Chi Sigma, professional chemistry fraternity, and service as dormitory Councilor. In High School Traynham served as president of the student body.

The Student Party candidate for the post of head cheerleader was simultaneously announced to be Betsy Couch, Chapel Hill coed who served on the UNC Cheering Squad during the past season. She is a member of Chi Omega Sorority and is a rising Junior.

The Student Party candidates for the Publications Union Board were also announced to be Preston Lemly, Carroll Poplin, and Fred Flagler.

Lemly has served as Business Manager of the Tar Heel, Treasurer of the Veteran's club, President of the Lutheran Students association, and is a member of the CPU.

Poplin has served as Sports Editor of the Tar Heel, member of the staff of the Carolina Mag and manager of the varsity swimming team.

Flagler is a present member of the PU Board and is up for reelection. See SP OFFERS, page 4.

## Pre-Election Rally Monday Night Will Feature Speeches

A pre-election rally in which all candidates will be introduced and the major candidates will speak is slated to be held in Gerrard Hall Monday night at 7:30 o'clock, announced Ed Gaither, chairman of the election committee.

All military men will be granted liberty to attend the rally and stay until it is over.

The candidates who will make talks not to exceed 3 minutes will be editors of campus publications, student government officers, and speaker of legislature.

Chairman Gaither reminds all candidates that notarized statements of each candidate's campaign expenses should be turned in to some member of the elections committee before their meeting in Graham Memorial Tuesday night.

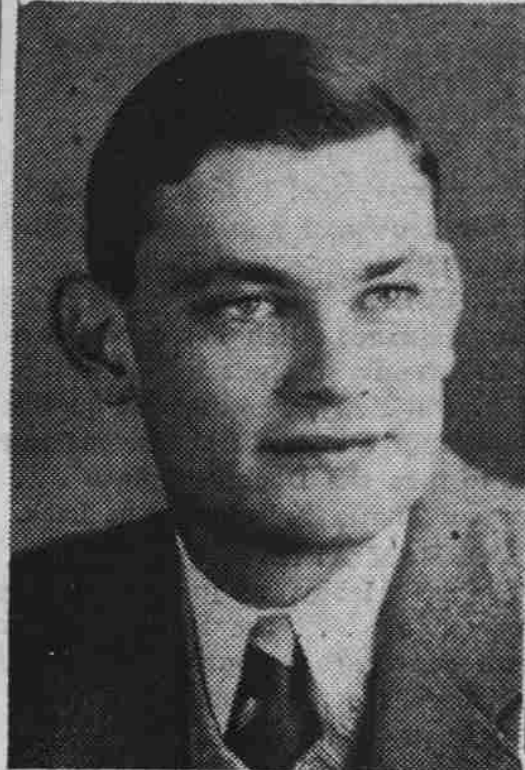
The election committee reminds students of both parties that it is against the campus code to destroy or remove campaign posters. Gaither warns campaign managers not to post posters and bills on buildings or trees.

lotte; Thomas Virgil Thompson, Fort Ogden, Fla.

DKE—Ralph Frederick Dupes, Tesco, Kan.; John Archibald McPhaul, Parkton. Kappa Alpha—Claiborne Taylor Selden, Richmond, Va.; Adrian Meredith Carroll, Burlington.

Kappa Sigma—Robert Elbert Cooper, Chattanooga, Tenn.; Clyde Robert Eudy, Albemarle; Robert August Haug, Union, N. J.; Lauthlin Bethune Johnson, Jr., Farmville; Eugene Hall Johnstone, Birmingham, Ala.; Joseph Augustus Landers, Wilkes-Barre, Pa.; John Rogers Lineweaver, Baltimore, Md.; Robert Putnam Thomas, Wilmington.

Phi Delta Theta—Charles Thomas Bennett, Elizabeth City; Robert Winston Carter, Greenwood, S. C.; Henry Randolph Currin, Durham; Jerome Kirby Darden, Port Arthur, Texas; Donald Milo Dudzik, Chicago, Ill.; See SOCIAL FRATS, page 4.



TRAYNHAM



COUCH

## Tar Heel Will Sponsor Election Night Party

The annual Tar Heel election party will be held in the main lounge of Graham Memorial on the night of elections, April 5. It has been the tradition of the Tar Heel to sponsor these parties each election for the campus to keep up with the latest tabulation of votes.

The votes are counted in groups according to polling places and as soon as the election committee has verified the count it is rushed to the election party for release. There it is announced over a public address system and marked up on a large blackboard. The party is free and all students are invited to attend.

## Overseas Veteran Gets Local Post

Captain Preston S. Marchant of the United States Marine Corps, has succeeded Major James W. Marshall as Commanding Officer of the University's detachment of Marines in the Navy V-12 unit here, it was recently announced. Major Marshall's new post is at Camp Lejeune.

Captain Marchant, who has returned from 29 months in the Pacific, entered the Army as a private in December 1940. He transferred to the Marine Corps in August 1941, and was commissioned in that branch in January 1942. He was in a force that landed on Guadalcanal about a month after the initial landing at Henderson Field. In the 12 months that he was stationed at Tulagi his outfit was bombed 87 times by Japanese planes. He took part in the initial assault in the Bismark Archipelago.

The Captain wears the Pre-Pearl Harbor, the Asiatic-Pacific, and the Presidential Unit Citation ribbons. He and Mrs. Marchant are temporarily making their home at the Carolina Inn.

## Easter Service Slated

An Easter Sunrise service will be held in the arboretum tomorrow morning at 6:30. The entire Pre-Flight choir will be present and render several anthems.

The service is sponsored jointly by the YW and YMCA, and the whole campus is invited to attend. In case of rain the service will be held in the Episcopal chapel.

## Welfare Group To Hold Two Sessions Here

### Institutes Slated For July, August

The division of Public Welfare and Social Work of the University will sponsor two institutes here at Chapel Hill during the coming summer term, it was announced today by Dr. Roy M. Brown, director. One will be for public welfare case workers and another for county public welfare superintendents and directors. George H. Lawrence of the division staff will direct both institutes.

Beginning July 9 and continuing through July 20, the institutes for county welfare superintendents and directors will offer three courses especially planned for this group, including present trends of public welfare administration, procedures in public welfare administration, and a seminar which will meet with various lectures on special problems.

J. Sheldon Turner, Chief, Standards and Program Development Division of the Social Security Board in Washington, and Dr. Katharine Jocher, Assistant Director of the University's Institute for Research in Social Science, will conduct the courses.

The Social Work Institute for Public Case Welfare will run from July 23 through August 3 and will feature four courses to be taught by Miss Frances Beery, Social Service Consultant of the National Tuberculosis Association; Miss M. Ethel Maginnis, Division Supervisor of Family Services in the Baltimore Department of Public Welfare; Miss Muriel J. McLaughlin, Director of Social Work, State Hospital at Raleigh; Dr. Fletcher Owen, Superintendent of the State Hospital; Dr. W. R. Berryhill, Dean of the University Medical School; and Mrs. Isabelle K. Carter, associate professor of social work in the University.

Material to be covered in the See WELFARE, page 4.

## July 1 Deadline For Applications In French Course

Application for enrollment in the "French House" where a concentrated course of study of the language will be given here at the University from July 2 to August 13, will not be accepted after July 1, Prof. Hugo Giduz of the French Department said today.

Only French will be spoken in the "House." Women students will be given rooms, and meals will be served for both men and women taking the course. Men students will be assigned special living quarters but will be required to take their meals at the "House."

A majority of the instructors will be native French, and lectures and entertainments, including French plays and games, will be provided as part of the activities. Emphasis will be placed on the culture and civilization of France, review of grammar, extra curricular activities for high school students, and materials and methods of teaching French.

The purpose of the project, Professor Giduz said, will be to aid teachers of French and prospective teachers of French to gain a proficiency in all phases of French, particularly in the spoken language.

The work will be on the undergraduate level, and a maximum of 12 quarter hours of credit will be allowed for the completion of the full course during the six weeks period.

## Chi O's Birthday

The fiftieth anniversary of the founding of Chi Omega will be observed at a formal banquet at the Carolina Inn on the evening of April 7.

Chi Omegas who would like to join Epsilon Beta chapter in the celebration are asked to contact the anniversary chairman, Mrs. E. L. Mackie, telephone 6631.

## Musical Scheduled

"The Cantor's Son," a Jewish musical, will be presented by the Foreign Films society tomorrow at 3:00 p. m. in the Playmaker Theater.

## Coeds Crowd Polls; Ruth Duncan Named President Of WGA

### Lib Schofield Selected Speaker Of Senate As Over 600 Votes Are Cast

With a record 94 per cent of the undergraduate women voting, Ruth Duncan, commerce major from St. Petersburg, Florida, was elected president of the Women's Government Association Tuesday, defeating Frances Bleight for the post by a vote of 307 to 291.

## Debate Team Goes To Meet

### Middies To Hear Carolina Speakers

Nina Guard and Wayne Blankenship left Thursday night for Annapolis and Baltimore, Md., where they will carry the first half of Carolina's northern debate tour to the Middies and John's Hopkins. They are debating the topic: Resolved that the several nations should adopt the Dumbarton Oaks proposals.

Buddy Glenn and Dave Pittman left Friday to complete the second half of the tour. They will engage Randolph-Macon and the University of Richmond on the question: Resolved that the Federal Government should enact legislation requiring that all labor disputes be settled by compulsory arbitration. This is the national debate topic.

Carolina's debate year will be concluded next week when several debaters journey to Charlotte to participate in the Grand Eastern debate tourney sponsored by the Strawberry Leaf society of Winthrop College at Rock Hill, S. C. Various contests in public speaking will be entered by the several colleges and universities which annually attend this affair. The tourney will last from Thursday, April 5, through Saturday, April 7.

Friday and Saturday of this tournament will be devoted entirely to the debating rounds. The national debate topic will be used, and any team entering must be prepared to debate both the affirmative and negative sides of the question.

## Union To Review Chapultepec Meet

The Chapultepec conference and its contributions to continued world peace will be the topic of discussion when the Carolina Political union meets in the Grail Room on the second floor of Graham Memorial tomorrow night at 8 o'clock.

Jimmy Wallace, chairman of the union, has announced that an especially interesting discussion is expected on this item of leading current interest and visitors are invited to attend.

At the present time the CPU is accepting applications for membership which may be obtained from the information office in the YMCA or from Preston Lemly, chairman of the membership committee of the union.

## Here's The Essence Of Three Plays On Playmakers' Series

By Brooksie Popkins  
"How does anyone ever write a play?" is a common question. People will admit plays don't come out of the clear blue sky, but they often wonder how the playwright gets started. Here is a little insight into the beginnings of the plays which will appear on the Playmakers Bill of Experimentals, Friday night.

"Through a Glass Darkly" has roots that began several years ago in a Detroit factory where Playwright Elinor Hayes Martin worked. After graduating from Wayne University with a BA in speech, Mrs. Martin worked for a while in Excelsior, a factory which turns out airplane parts. There she worked and lived side by side with women from all sections of the country and from all types of environments.

She watched these women work together, noticed sociological tension

Next speaker of the Coed Senate will be Lib Schofield, who won the post over Meadie Montgomery by a vote of 306 to 297. Miss Montgomery automatically becomes a member of the Senate.

This week's vote was by far the largest ever polled in coed elections, with over 600 ballots cast. Last year only 45 per cent of the coeds voted.

Candidates on the CICA-Chi Omega slate won almost twice as many posts as did those put up by the Pan-Hellenic bloc. The former took six of the major coed offices, as against nine taken by Pan-Hell candidates. Eight of the 12 coed senators elected were put up by CICA-Chi Omega.

Tuesday's record vote was attributed to intense campaigning by both sides and to the fact that ballot boxes were placed in every dormitory. All candidates won by close margins.

### Other New Officers

Newly-elected secretary of WGA is "Twig" Branch, who defeated Evelyn Davis for the post by a vote of 331 to 260. Travis Hunt defeated Viola Hoyle as treasurer of WGA by a vote of 326 to 272.

Frances Bleight, the defeated candidate in the race for the WGA presidency, automatically becomes vice-president of the association.

President of the Women's Athletic Association will be Joyce Fowler. She defeated Barbara Boyd by a 341 to 247 margin. Viola Hoyle was unopposed for the vice-presidency, as was Ann Christian for the treasurership. Gerry Smith is secretary of the association, winning over Nicki Nicol by a vote of 309 to 277.

Betty Marks defeated Carlisle Cashion to be reelected town representative to Honor Council.

Elected to the Student Legislature as representatives from WGA were Ida Prince and Betty Edwards, who won over Nookie McGee and Eugenia Pafe.

### Coed Senators

Newly-elected members of the Coed Senate are Alice Turnage, town; Sally Bryan and Barbara Boyd, Alderman; Lib Henderson, Archer; Ann Osborne and Mary Hill Gaston, Carr; Lillian Leonard and Jane Richardson, See COEDS CROWD, page 4.

## Paper To Print Slates

The Tar Heel will print in its next issue platforms of all major candidates in the coming election, announced Editor Charles Wickenberg. The platforms must be typed and submitted to the Tar Heel office before 7 o'clock Sunday evening.

Candidates whose platforms will be printed include: Editors of all publications, Student Body officers, and Speaker of the Legislature. The platforms should not consist of over 250 words.

among some, saw the effects of the war on their lives, and realized how much the factory system played on their nerves. When Mrs. Martin came to Chapel Hill this year to work on her MA in dramatic art, she looked back on her life in Excelsior, and decided to put her fellow workers into a play. "Of course, I cannot say the women in this play are direct character sketches. Rather they are composite characters of many of the people I have known and worked with."

Cast in "Through a Glass Darkly" is Ann Campbell as Ann, William H. Andrews III as Bob, Barbara Schuster as Edith, Elizabeth Johnson as Martha, June L. Kane as Mable, and Sarah Spratt as Sarah. Nick Lindsay is the director and Jimmy Warren stage manager.

Charles Waldman from Long, See HERE'S THE, page 4.