

FENCING MEETS PROVE SUCCESS

Latest Intramural Sport Attracting Campus-Wide Attention.

The Sigma Epsilon fencing team kept its slate clean Thursday when it defeated the swordsmen of Old East by a score of 5-4. Long and Williams of Sigma Epsilon each won two matches and lost but one, and were tied with Lowry of Old East, winner of the novice tournament, who also turned in a card of two wins and but one loss. Fine fencing was done by both teams, and with a bit more experience several of these men will be exhibiting a high grade of fencing.

This is the third successive match in intramural fencing which has been so closely contested that the match was not decided until the last bout had been completed.

The line-up:

Sigma Epsilon	W.	L.
Long	2	1
Williams	2	1
Hewitt	1	2
Total	5	4

Old East	W.	L.
Lowry	2	1
Rhodes	1	2
Thompson	1	2
Total	4	5

The Sea Hawk fencers beat the Musketeers Wednesday afternoon after a match replete with sensational thrusts and parries. The Musketeers put up a good fight but were finally bested by a score of 5-4.

Furchgott and McLane of the Sea Hawks and Clawson and Roberts of the Musketeers were the outstanding performers, each winning two and losing one.

The lineup:

Sea Hawks	W.	L.
Furchgott	2	1
McLane	2	1
Smith	1	2
Total	5	4

Musketeers	W.	L.
Clawson	2	1
Roberts	2	1
Sale	0	3
Total	4	5

In a bout which was the best-fenced match up to date, the Manly fencers defeated Everett 5-4 Wednesday afternoon. The match was fiercely and scientifically contested, and it was not until the last touch of the last bout that the match was decided.

Egan of Manly showed great ability, completing his card with three victories and no losses. Leibowitz was best for "T" with 2 wins and one loss.

The line-up:

Manly	W.	L.
Egan	3	0
Lentz	0	3
Roland	2	1
Total	5	4

Everett	W.	L.
Liskin	1	2
Ross	1	2
Leibowitz	2	1
Total	4	5

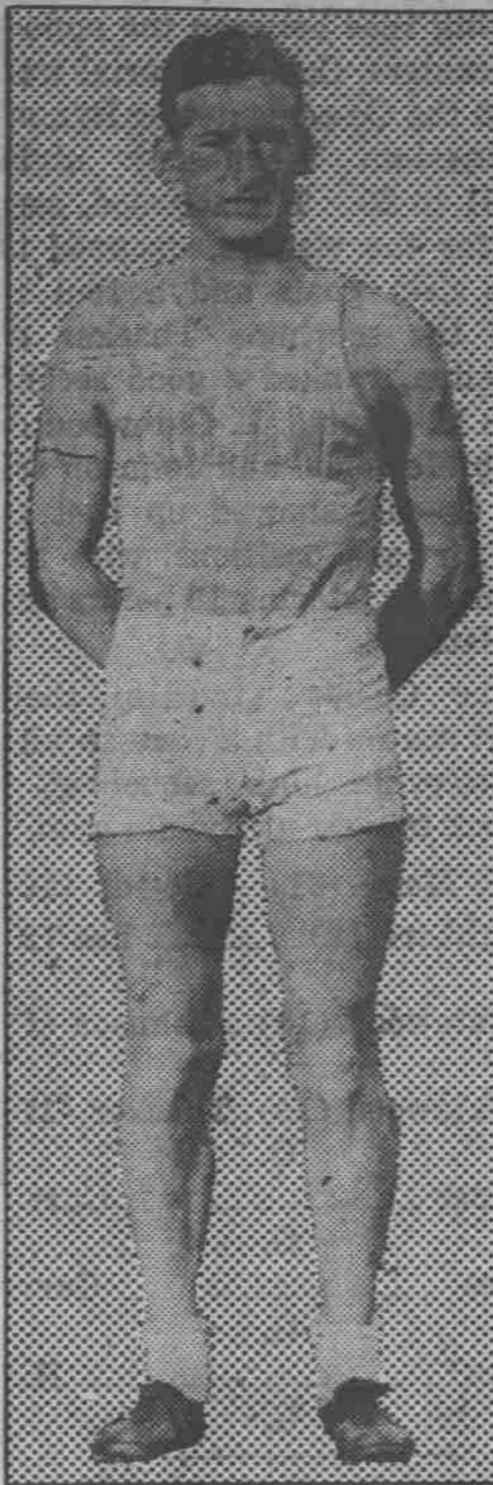
The Sigma Phi Sigma fencing team, led by the fine exhibitions of Todd and Farris, defeated the Manly fencers by a score of 5-4 yesterday afternoon. Egan and Roland did the best work for Manly, winning two bouts and losing but one.

The lineup:

Sigma Phi Sigma	W.	L.
Todd	2	1
Dike	1	2
Farris	2	1
Total	5	4

Manly	W.	L.
Lentz	0	3
Egan	2	1
Roland	2	1
Total	4	5

Tulane Star



Here is a picture of Ike Armstrong, Tulane halfback, who might look more familiar in football togs, but who, nevertheless, will be one of the outstanding sprinters at tonight's First Southern Conference Indoor Games in the Tin Can. Armstrong's running against such other football stars as Chandler of Georgia, Stout of State, Boineau of South Carolina and Slusser of Carolina should be a big feature.

WARNER BAXTER IN "SUCH MEN ARE DANGEROUS" AT THE CAROLINA THEATRE

Adapted from Elinor Glyn's sensational romantic story, with Warner Baxter and Catherine Dale Owen in the leading roles, "Such Men Are Dangerous" Fox Movietone production, will be Monday's feature at the Carolina Theatre.

"Such Men Are Dangerous" is heralded as one of the best pictures made since the screen began to talk and embraces all the required elements of solid entertainment, suspense, thrills, drama and comedy with more intriguing twists than Miss Glyn has heretofore offered.

Not since his splendid performance in "In Old Arizona" in which he portrayed the character of "The Cisco Kid," has Baxter been more delightfully cast. Catherine Dale Owen, acclaimed the most beautiful blonde of the films, recently supported John Gilbert in "His Glorious Night."

The cast includes such notables as Hedda Hopper, Albert Conti, Claude Allister and Bela Lugosi. It was directed by Kenneth Hawks.

Weeks Is Architect

H. Raymond Weeks has been notified by the state board of registration of architects that he has passed with honor the state examination and will be issued a certificate as licensed architect. Mr. Weeks is at present in the service of the firm of Atwood and Nash, Inc., architects and engineers of Chapel Hill. He is a graduate of the architectural school at Georgia Tech.

Three Hundred Stars Here For Indoor Games

(Continued from first page) such men as Barnhart of Georgia, Broderick of Washington and Lee, and Barkley, Carolina. The long races will hold spot attention on the card due to the rivalry which exists between

Simon of Duke and Young of Georgia. Lowery of Carolina, Ochs of Virginia, Heizer of Duke, Crisfield of Georgia Tech, Johnson of State, and Biddle of Washington and Lee complete a fine field.

Day is the most popular entry in the shot-put and is a Virginia man. Competition will be forthcoming however from Patterson of State, Adkins and Brown of Carolina, Jones of Georgia, and McDonald of Maryland.

The indoor high jump has called out Bagby of Carolina, winner of the event at Virginia's meet, in addition to de Coligny of Tulane, Freeman of Duke, Kennedy of South Carolina, and Paxton of Virginia, and it looks like Bagby may lose his first position unless he exerts himself.

Ruble, Smith, Dry, and Arnold are being counted upon by Carolina fans to offer some pretty stiff competition to the field composed of Turner and Sharp of Duke, Cooke of Virginia, and Pomerooy of Washington and Lee.

Hamm, world champion in the event, and Graydon competing for Georgia Tech will lead the broad jumpers. Bostick of South Carolina, White of Maryland, Sandifer and Finklestein of Washington and Lee, and Neiman and Brown of Carolina will be pushing the Georgia Tech favorites.

Washington and Lee, present record holder in the mile relay,

has sent Sandifer, Dickey, Broderick, and Shepard to uphold the honor of their institution, but the teams representing Georgia Tech and Carolina will make the Washington and Lee men step on it to come out first again. Farmer, Nims, Weil, and Hamer are scheduled to run for Carolina.

Freshman relay teams in the running will come from Elon, Georgia Tech, Presbyterian College, Virginia, Washington and Lee, Davidson, Duke, and North Carolina.

High schools and prep schools sending relay teams are Augusta Military Academy, Charlotte high, Georgia Military Academy, Asheville high, Hyattsville Height school in Maryland, Wilmington high school, High Point

EYES CORRECTLY FITTED
W. B. SORRELL

R. R. CLARK
Dentist
Office over Bank of Chapel Hill
PHONE 6251

NEW YORK AND RETURN
\$18.50
BUS LEAVES MARCH 15
Bus Returns to Chapel Hill
MARCH 22
Phone 6361 — Write Box 725

high, Greensboro high, Tech high of Atlanta, and Goldsboro high.

Delta Tau Delta announces the pledging of Frank W. Owens and Jimmy O. Moore of Charlotte.

LOST

Lost: Yellow slicker with monogram, Carolina seal with Carolina written above. Please return and receive reward from Fred C. Wardlaw, Beta Theta Pi House.

A drama of sacrifice and supreme love.

"THE LOCKED DOOR"

with
ROD LA ROCQUE
WILLIAM BOYD
BETTY BRONSON

Honor at stake . . . the desperation of fear . . . and a man dying at her feet, shot by another. She was locked in the room with him . . . the man of her past.

Added Features
All Talking Christie Comedy
"Let Me Explain"
"Station B-U-N-K"
A Novelty Act

NOW PLAYING
CAROLINA THEATRE
MONDAY
Warner Baxter
in
"Such Men Are Dangerous"

WHAT YOUNGER COLLEGE MEN ARE DOING WITH WESTINGHOUSE



Special cars were needed . . .
railway tracks had to be lowered, to handle
the transformers these men built

At Conowingo, Maryland, is the second largest hydro-electric development in the world. Power generated there at 220,000 volts will be fed into lower voltage transmission lines of the Public Service Electric and Gas Company at Roseland, near Newark, New Jersey.

The transformers that will perform this transfer of energy are physically the largest ever built, for their capacity is sufficient to serve the home lighting needs of a city of a million people. Four in number, each is larger than a house, weighs when empty as much as a large locomotive and holds three

tank cars of oil. Four specially built railway cars and fifty-two standard cars of various types were required to transport them from the factory to the job. At one point the railway tracks had to be lowered so the units would clear an overhead viaduct, so great was their size.

When spectacular jobs like this come up, it is natural that they go to an institution like Westinghouse. Pioneers in electrical development, Westinghouse engineers often know the thrill of achieving the "impossible" in seeing their work through from design to erection.

Westinghouse



E. W. TIPTON
University of Kansas, '25
Development of Commercial Design



R. L. BROWN
Ohio State University, '22
Tap Changer Development



EMIL STEINERT
University of Minnesota, '25
Electrical Designer



A. C. STAMBAUGH
University of Pittsburgh, '24
Engineer of Tests



H. H. WAGNER
University of Illinois, '27
Designing Engineer