

GERMAN CLUB
GERRARD HALL
1:30 TOMORROW

The Daily Tar Heel

SALON ENSEMBLE
GRAHAM MEMORIAL
4:00 O'CLOCK

VOLUME XLI

CHAPEL HILL, N. C., SUNDAY, MAY 14, 1933

NUMBER 168

WAR PRODUCTION FEATURES SPANN IN LEADING ROLE

"Flieger," Air Drama, Presented
By German Department at
8:30 Tomorrow Night.

The German department will give a presentation of *Flieger*, the German war play that aroused so much favorable comment abroad because of its fairness to all nations in depicting the scenes. The performance will take place at the Playmaker theatre at 8:30 o'clock.

The play concerns the adventures of a German *Flieger* or war pilot who has become famed as an air fighter. He is in constant fear of meeting his death at the hands of an equally famous English ace, but when the British champion challenges him he goes into the fray.

Spann Takes Lead

The principal role is taken by Dr. Meno Spann who directed the vehicle. It was Dr. Spann who suggested presenting the play here April 7 and 8. It was enjoyed so well by the small audiences that Spann felt that with the favorable comment of the people that saw the play it ought to draw much better in a second performance.

Assisting Spann will be several members of the faculty including Dr. Urban T. Holmes, Robert Linker and Beverly Thurman. The other members of the cast are members of the Playmakers and students including Foster Fitz-Simons and Ellen Stewart, Playmakers, and Tom Johnson, Dan Weiner, Nathan Shapiro, George Hellinger and Jules Aaron, German students.

Scenes Are Authentic

Several former war aces from both sides have offered comments asserting the fact that the action scenes in the play are authentic. Spann has received during the week some property from an ex-soldier

(Continued on page two)

Lown Believes Arrangements In Syncopation Are Essential

Famous Band Leader in Daily Tar Heel Interview States That
Popularity of Such Bands as Ossie Nelson's and Abe Lyman's Is Due to Varied Assortment of Playing Styles.

By Phil Hammer

"Rhythm in dance music is coming back again," asserted Bert Lown, famous band leader yesterday in a special interview with a reporter of the DAILY TAR HEEL. "It is the primary secret of success in modern syncopation, whether slow or fast."

Lown furnished the music for the third annual Junior-Senior dance series which ended in the Tin Can last night at the conclusion of senior week. A flawless harmony and slow beat afforded ideal dance arrangements and the crowd of hot, packed dancers were lavish in praise of his performance.

Times Have Changed

The ability of Bert Lown to keep consistently at the top of the heap of stellar dance orchestras is attributed to his elaborate arrangements of popular tunes. A few years ago dancers demanded choruses and plenty of them, but times have changed and the demand seems to be for competition between hands as to which can produce

PHI MU ALPHA INDUCTS FOUR MEN INTO GROUP

Phi Mu Alpha sinfonia has announced the initiation of the following four men: Edwin Raymond Brietz, Jr., John G. Briggs, Jr., Ray Wilson Foster, and Richard Joseph Simmons.

It was also announced yesterday that the regular monthly business meeting of the organization will take place tonight at 9:00 o'clock in Hill Music hall.

FOREST THEATRE PROGRAM STAGED

Playmakers to Present "Midsummer Night's Dream" from Natural Stage.

After a lapse of two years in the series of Forest theatre productions the Carolina Playmakers will undertake their most difficult program of the year with the presentation of Shakespeare's *Midsummer Night's Dream* in the Forest theatre at 8:30 o'clock on Friday and Saturday evening of this week.

Plans for this year's presentation are more elaborate than any ever made for any of the 15 productions which have been played on the woodland stage.

Beautiful Stage Set

Reclining on the floor of the forest's natural auditorium, the audience will view the set, 100 feet across, depicting the palace of Theseus and Hippolyte and the fern bower of the fairies. The huge set, designed by Mary Dirnberger, is being executed by students under the direction of Professor Samuel Selden.

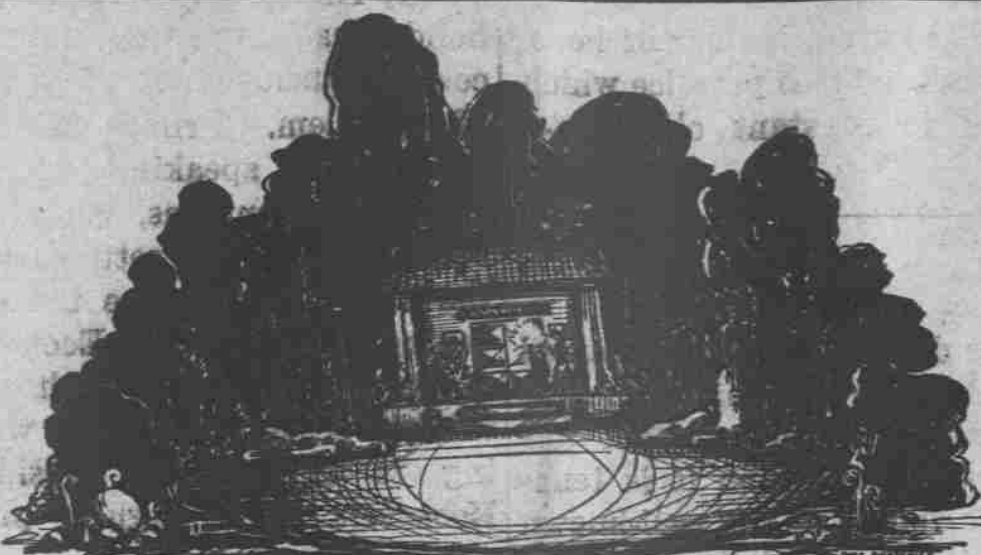
The performance will be embellished by a number of features, including a presentation by the Salon ensemble of the music written by Mendelssohn for the play—not omitting the famous wedding march.

Dances Are Features

Phoebe Barr, new director of dancing for the Playmakers, is devoting much time to perfecting the court and fairy dances

(Continued on last page)

Setting of Shakespeare Play



Here is the setting for the most ambitious program the Carolina Playmakers have undertaken this year. It is to be used Friday and Saturday of this week when the group presents Shakespeare's comedy, "Midsummer Night's Dream," at the Forest theatre. The set, which was designed by Mary Dirnberger, includes the palace of Theseus and the fern bower of the fairies.

SALON ENSEMBLE PRESENTS FINAL PROGRAM TODAY

Thor Johnson Will Conduct
Group in Last of Its Series of
Graham Memorial Concerts.

Thor Martin Johnson will conduct the Carolina Salon ensemble in the last of its series of Graham Memorial concerts this afternoon at 4:00 o'clock.

Today's program will include compositions of modern French, English, and American composers. A feature of the program will be the rendition of the *Allegro Moderato* movement from Mendelssohn's *Trio in D minor* by Thor Johnson, violinist; Dan Field, violin-cellist, and Harry Lee Knox, pianist.

A premier performance will be given of a new composition by Herbert R. Hazelman, undergraduate music student, titled *Suite pour Contrebasse et piano*. This suite, consisting of *Prelude*, *Chanson*, and *Danse*, will be played by John Murphy with the composer accompanying at the piano. Another recent work by Hazelman, *Grainger in the Mountains*, will be played by the ensemble with Harry Lee Knox as piano soloist.

Series Continued Next Year

This concert concludes a series of Sunday afternoon entertainment inaugurated by the Student Union and the Salon ensemble in January. Their reception by students and visitors indicates that they will be continued next fall.

The remainder of this afternoon's program will include Bizet's *Farandole* from *L'Arlesienne Suite*, *Aubade* from the ballet *Le Cid* by Massenet, *Mountain Song* by Stringfield, *Handel in the Strand* by Grainger, *Grandfather's Wooden Leg* by Clokey, and *Hungarian Dance No. 5* by Brahms.

Exhibition Attracts Chapel Hill Folks

Approximately one hundred visitors attended a tea given Friday afternoon by the Students Art Guild in Hill Music hall for the exhibition of paintings from Chester Springs summer school of the Pennsylvania Academy of Fine Arts and their own exhibit of classroom work.

The Chester Springs collection of oil paintings include a great variety, with character study portraits, still life, and landscapes. The exhibition will continue through Tuesday.

Several members of the art division of the Community club and ladies of Chapel Hill aided in the reception.

(Continued on page two)

BRADSHAW ADDRESSES ASSEMBLY TOMORROW

Dean Francis F. Bradshaw will address the freshman class at the assembly period tomorrow morning at 10:30 o'clock in Memorial hall. Songs by a duet composed of Jesse Parker and Sam Lane will also feature the program.

All members of the first-year class are required to attend since two unexcused absences cause automatic probation.

BINGHAM DEBATE SUBJECT CHOSEN

Annual Declamatory Clash Between Di and Phi Speakers to Take Place On Class Day.

The subject chosen by the campus literary societies for this year's Bingham debate, annual commencement contest between members of the Di senate and Phi assembly, relates to the Chino-Japanese situation and the action which the rest of the world should take in regard to it.

Specifically, the question will be as follows: Resolved: That the states of the world should intervene in the conflict between China and Japan in the interests of the world at large. The members of the Di are to uphold the affirmative and the members of the Phi the negative side of the question.

The Bingham debate was instituted in 1899 by the Honorable R. W. Bingham, present United States ambassador to England, in memory of members of his family. The debate this year is to take place at 8:30 p.m. on Class Day, Tuesday, June 6, in Gerrard hall. The Bingham medal goes to the best speaker of the winning side.

Try-outs for the debate are being conducted by each of the societies this Tuesday at 8:00 o'clock immediately after their regular meetings to select two members to represent them in the debate.

Merry Frolickers Cut Capers On Hot But Joyous Weekend

Bedraggled Juniors and Seniors Find Going Tough But Thoroughly
Enjoyable; Campus Shines Show Their Stuff and Politicians
Find Time to Stir up Activity for Future Campaigns.

By Joe Sugarman

Two tux-clad students met in Harry's early Saturday morning. Between sips of coffee, one asked the other his opinion of the Junior-Seniors.

"Not so hot," replied his companion.

The waiters in Harry's worked three-quarters of an hour to bring him around and remove the imprint of his erstwhile friend's fist on his jaws.

Hot! The perspired, bedraggled, faces and bodies of 1500 dancers, the limpness of the black and silver decorations, and the blaring and tooting of Bert Lown's merry men gave a concerted, cumulative effect of a living, dancing, struggling Hades.

But it was a pleasant Inferno. Not the sort that Dante, Vergil, or Homer might have enjoyed, but exactly the kind that such old hands as Harry Finch, Wofford Humphries, Vass Shepherd, and E. C. Daniel, Jr., reveled in.

Gang Was All There

Freshmen, worried over the scrupulousness of their attire,

BRILLIANT SERIES OF JR.-SR. DANCES ENDS LAST NIGHT

Third Annual Dance Set Featuring Bert Lown Brings Senior
Week to Close.

With Bert Lown and his famous orchestra furnishing his equally well-known slow rhythm, the Senior Ball, lasting from 9:00 until 12:00 o'clock, brought to a close last night the third annual series of Junior-Senior dances.

The affair was preceded by the Junior-Senior tea dance in the afternoon. Lown also played for this function in the Tin Can.

Cafe Leads Figure

The senior figure, led by President Arlindo Cate, took place at the dance last night. Assistant leaders were: B. Cabell Philpott, John S. Gorrell, Charles G. Rose, Harry M. Hodges, E. C. Daniel, George Phillips, and B. Perry Collins.

Lown's band with its dreamy tempo performed splendidly in the same manner which has brought it nation-wide fame. Lown has played three years at the Hotel Biltmore in New York, and has filled long engagements at the Lawry in St. Paul, the Bell-Reeves in Kansas City, the Ambassador in Los Angeles, and the Park Central. He also makes records exclusively for the Victory company. Six new hits will be recorded by his band during the coming week.

Holds Long Record

He and his orchestra hold the longest single engagement record in the orchestral business, playing steadily and successfully at the Biltmore for three years. His performance of ten consecutive weeks at the Park Central is the longest of any band ever playing there. His contract will last until next October with the option of renewal.

Activities of senior week closed last night with the dance.

(Continued on last page)