

Vets Planning Grad Work Should Apply

All veterans who will receive diplomas this spring under the GI Bill and who plan to take graduate work in the fall should file applications with the Veterans Administration, Col. Shepard, veterans advisor, announced yesterday.

By applying for graduate training before receiving degrees, students will be permitted to go ahead with their studies this fall, even though the July 25 cut-off date for starting GI courses will have passed.

This ruling will also apply to veterans who finish undergraduate training any time after the cut-off date and wish to continue in the graduate field.

Anyone who has any question about the ruling should go by 315 South and see Shepard.

Scholarship Offered Coeds By Tri Delts

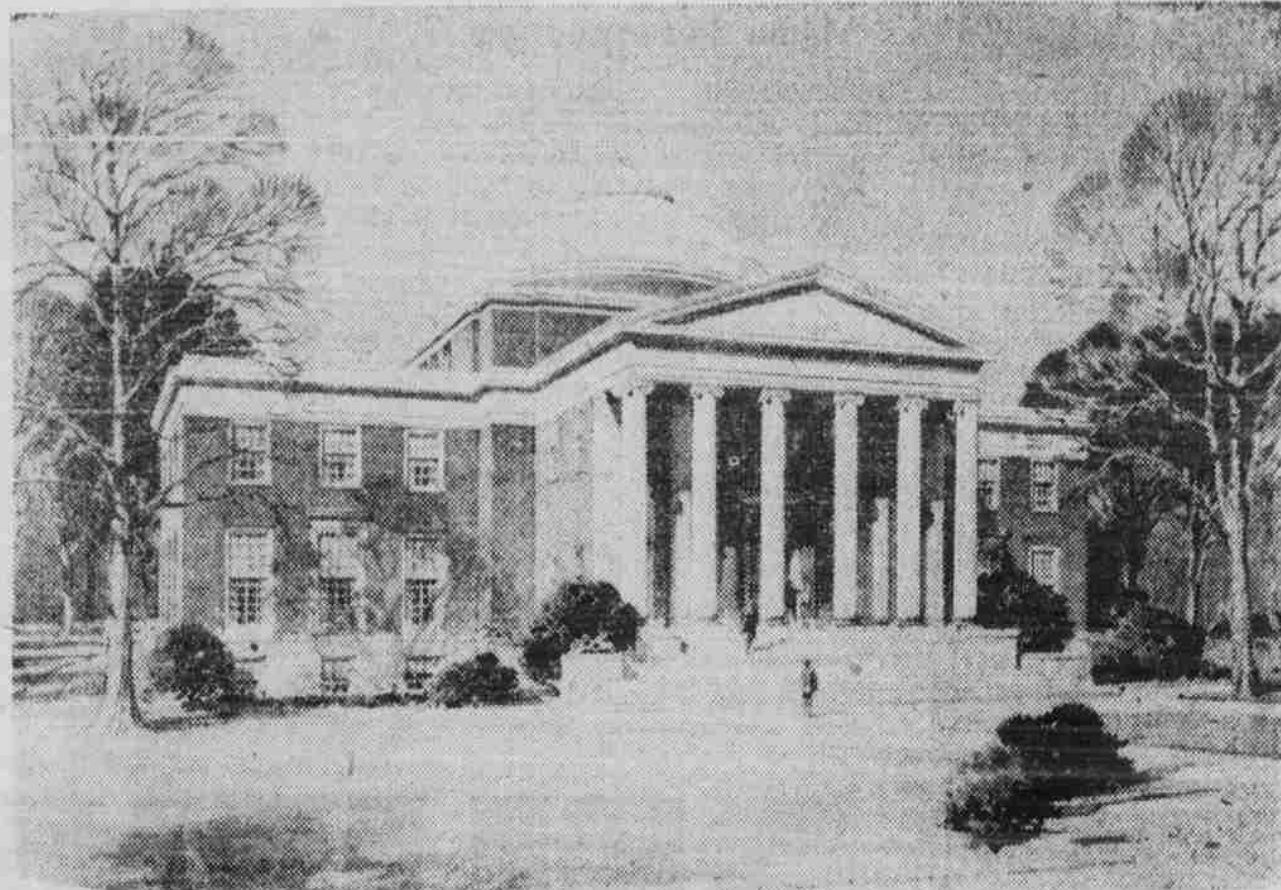
A scholarship valued at approximately \$150 has been made available to all coeds at the University by the Delta Delta Delta sorority and all those interested must notify the Dean of Women's office no later than tomorrow.

Funds for the award will come from the Tri Delt Local Scholarship Fund and the Tri Delt Committee on Awards will be the sole judge of the applications.

Applications are available at the Dean of Women's office in South Building. A personal letter explaining educational and vocational intentions and three personal letters of recommendation must accompany all applications.

A RECEPTION will be held by the Music Department in the Main Lounge of Graham Memorial between 9 and 12 o'clock tonight.

More Than 286,000 Shows Seen At Planetarium In First Two Years



THE MOREHEAD PLANETARIUM celebrated its second anniversary on campus last Thursday. The building was given the University by John Motley Morehead, a philanthropist and Carolina alumnus, and was first opened May 10, 1949. In the past two years, some 286,000 persons have attended the shows at the Planetarium.

More than 286,000 persons have witnessed the demonstrations in Morehead Planetarium at the University since the building was dedicated two years ago, Chancellor Robert B. House announced Tuesday night at a celebration of the second anniversary.

He said that he also had been informed that the attendance last year was greater than at any of the other five in this country with the exception of the Hayden Planetarium in New York.

"One of the most gratifying things has been the large attendance of school children," Chancellor House added. "They come here every day, mostly in large buses, from every section of the State."

PHILOSOPHY GROUP will meet in the Grail Room of Graham Memorial tonight at 8 o'clock.

Chancellor House presented John Motley Morehead, the donor of the building, who said it was a source of great personal satisfaction to realize that the building was serving such a useful purpose in the life of the State.

Morehead himself opened the show, the first demonstration of a "Trip to the Moon," as he stood in the console with Chancellor House and turned on the switch that sent the gigantic Planetarium instrument revolving.

The audience was delighted with this demonstration, which will be on for several weeks. It takes one on a trip to the moon via a rocket ship. A radio conversation between Kay Kyser on the moon and the commander of the rocket ship is an impressive feature of the performance, which

is regarded as one of the most ingenious Planetarium shows yet presented.

CAMPUS BRIEFS

"TABLOID TAR HEEL vs. Regular Size" will be the topic for discussion at the weekly meeting of the Press Club tonight at 7:30 in Roland Parker Lounge 2 of Graham Memorial.

Editor Glenn Harden, members of the staff and Joseph L. Morrison of the School of Journalism will speak on the advantages of a tabloid.

COEDS SHOULD sign up with their WAA representatives for the annual spring picnic today at Kessing Pool. The annual awards will be presented and food and entertainment are on the schedule. In case of rain the affair will be held in Woolen Gymnasium.

THE PRACTICE OF General Medicine" will be the subject of an address by Dr. Grady Dickson at 7:30 tonight in the auditorium of the Zoology building. Faculty members and General College students are invited to attend the address being sponsored by the Whitehead Society of the School of Medicine.

BOARD OF DIRECTORS of Graham Memorial will meet in the Grail Room of Graham Memorial at 4 o'clock this afternoon.

Stock up on these

Del Monte—Crushed No. 2 Can	
PINEAPPLE	.27
Super Store	
COFFEE	lb. .77
No. 2 Can	
PIE CHERRIES	.23
Breast O' Tuna — 1/2 size can	
TUNA LIGHT MEAT	.35
See-All—24 oz. bag (self-rising)	
CORN MEAL	.14
3 Cans	
MAINE SARDINES	.25
Armour Banner—Sliced	
BACON	lb. .49
Table Dressed	
FRYERS	lb. .55
GROUND BEEF	lb. .66
Loin End	
PORK ROAST	lb. .53
PORK LIVER	lb. .41
Large Green	
SHRIMP	lb. .69
Fresh Local Large	
GRADE A EGGS	Doz. .63
Fresh	
TOMATOES	ctn. .19
FRESH CABBAGE	3 lbs. .14
LARGE LEMONS	Doz. .39
Stokleys—No. 303 Can	
APPLE SAUCE	.14
Garners — 12 oz. jar	
GRAPE JELLY	.22
Peter Pan — 12 oz. jar	
PEANUT BUTTER	.35
Miracle Whip	
SALAD DRESSING	Pt. .41

FOWLER'S Food Store

REMOVAL SALE

WE'RE MOVING DOWNTOWN

Take Advantage of Our Substantial Savings

GROUP NATIONALLY ADVERTISED SUITS, reduced from 35.00 to	24.00
GROUP TWEED AND GABARDINE SUITS, some flannels, values to 56.95, reduced to	29.95
GROUP MAMMONTON PARK SUITS, values to 66.50 (present market price—75.00), our Sale Price	36.95
BUR-MIL PLAID AND INDIA CORD SLACKS, reduced from 8.95 to	5.99
GALEY & LORD ARISTOCRATIC COTTON CORD SLACKS reduced to	5.99
GROUP COTTON ARGYLE SOCKS reduced from 1.50 to	.75
ALL OUR DRESS SHIRTS, values to \$5.00, limited time only	3.99
CYRIL JOHNSON COVERT DOESKIN SLACKS, natural shade, reduced from 14.95 to	9.99
GROUP WOOL GABARDINE SLACKS, reduced to	9.99
GROUP SPORT COATS, values to 42.50, reduced to	23.99
GROUP SPORT COATS, values to 30.00, reduced to	18.95
ALL WHITE BUCK SHOES, favorite 6 eyelet model. Sale price	9.95
MARTIN'S IMPORTED ALBIAN GRAIN BENCH MADE SHOES, hand lasted by Howard & Foster, reduced from 18.95 to	10.99
GROUP GENUINE SHELL CORDOVAN SHOES, reduced from 19.95 to	11.99

YOU'LL FIND MANY OTHER OF YOUR FAVORITE ITEMS AT BARGAIN PRICES

MILTON'S CLOTHING CUPBOARD

Across From Long Meadow Dairy

One Block Beyond Bus Station