

Cagers Hope To Stop State With Man-For-Man Defense

By Ed Starnes

Carolina will use a man-to-man defense against N. C. State tomorrow night when the two teams tangle in Woollen Gym. The Tar Heels will have a slight height advantage over the Wolfpack, and hope that the defense will aid them on rebounds.

In the past Carolina has attempted to block the center and force the Pack to shoot from outside. State still was not stopped and Carolina hasn't beaten State in 13 tries since 1946.

This year's Red and White team from Raleigh isn't the powerful, all-winning group that coach Ernie Case had last season or in years previous. The 1951-52 State team has had trouble all year against intersectional foes, splitting ten games.

Speight Top Scorer

Top man for State is forward Bobby Speight who is fourth in the Big Five scoring. The 6'7" string bean has scored 273 points in 17 contests for a 16.0 average. He has also turned in some fine work under the boards, averaging around 12 rebounds per game.

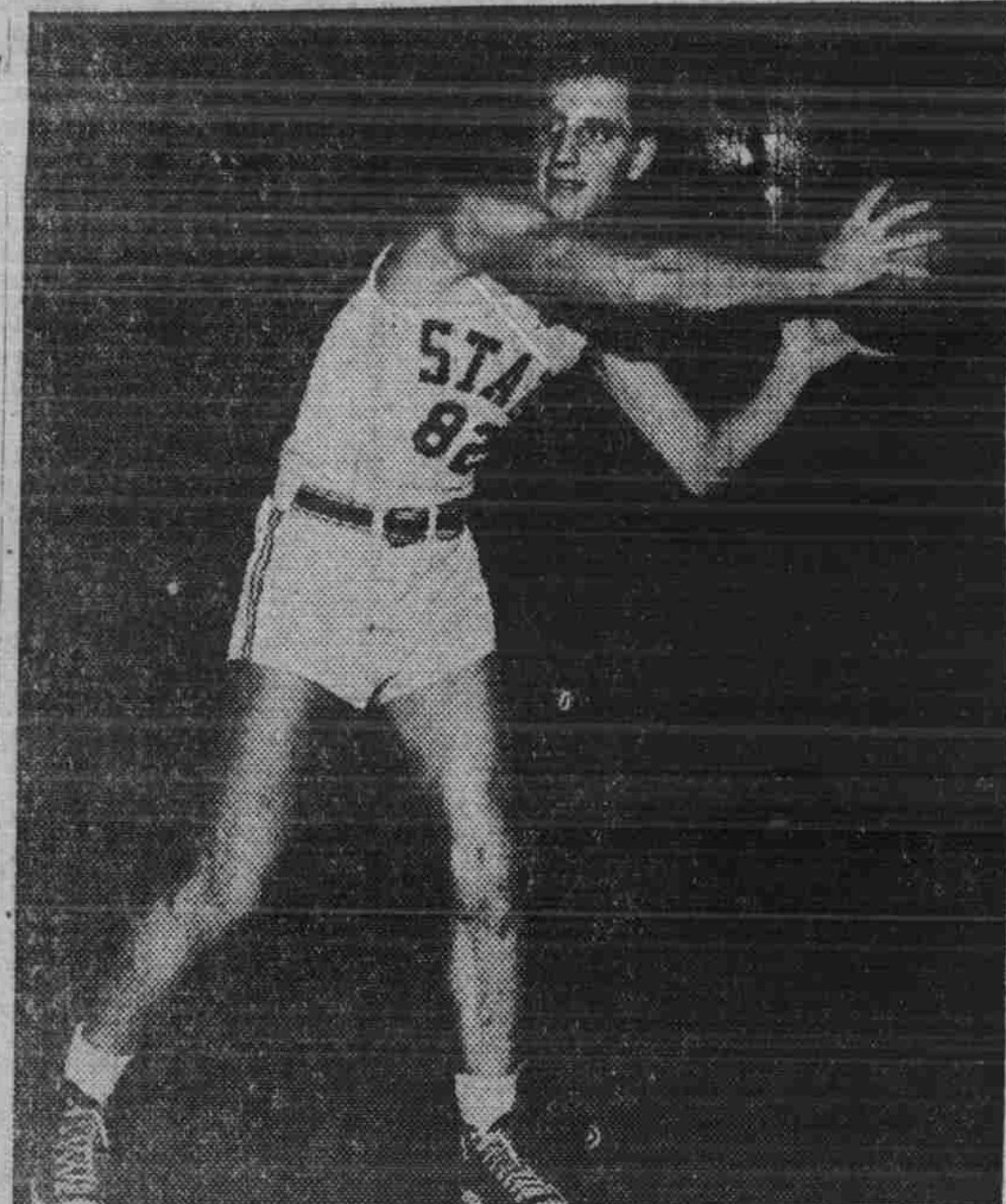
Sophomore center Mel Thompson is right behind Speight with 157 points in 12 games for a 13.3 average. Thompson is a man that Case didn't figure on in his plans for this season, but who has turned out to be a pleasant surprise to the coach.

Captain Lee Terrell is the leader of the Wolfpack and is considered by Case to be one of the cleverest players he has ever coached.

The only man remaining from the old teams of Dicky, Ranzino, Horvath, and Bubas, Terrell is the floor leader and one of the top scorers in the conference. He was elected the outstanding player in the Dixie Classic last December.

Lifson Guards Terrell

Al Lifson, Carolina's freshman



GUARD BENMIE YURIN of State is one of the better floor men in the Conference and will alternate with Dick Tyler as captain Lee Terrell's running mate. The six foot, four inch junior from Gary, Indiana, has a good two-handed set shot and work hard on rebounds.

sensation, will draw the assignment of guarding Terrell. The rookie forward who has become the top scorer on the team and one of the top in the conference, will have his hands full with the tricky State captain.

Named to the defensive job on Speight is Howard Deasy, Carolina's 6'7" captain. The battle between the two for rebounds should be an interesting sidelight to the game.

Jack Wallace will guard Bill Kukoy, State's 6'3" forward who has a 10 point per game average. Vince Grimaldi will draw Dickie

Tyler as his defensive assignment. Tyler had been used as a substitute until recently and the speedy guard has been a star since his elevation.

Coach Tom Scott has never had his Tar Heel team beat a Case-coached State five. The two mentors started the same year, 1946, and the Wolfpack has won every game since then.

Paul Likins Solving Cagers' Problem At Center Position

by Bill Peacock

Coach Tom Scott said before the basketball season opened that he had four veterans returning, but the play at center would make or break the team, and from the way freshman Paul Likins is coming along Carolina must be considered the darkhorse of the conference race.

Likins, a six foot, nine inch 18-year old from Elkhart, Ind. yesterday was chosen the Daily Tar Heel Athlete of the Week.

"He's improving in every game," says Scott. "He's becoming more aggressive under the backboards and his rebound work is coming along well. We're very well satisfied with his work; he's doing all right for a boy just out of high school."

Using Height Well

The lanky Likins is learning to use his height to better advantage and currently trails Howard Deasy, who was eighth in the nation last year, by 24 in the rebounds department. But most important, he is improving after a slow start.

He is the lowest scorer among the starters, but he usually makes them when he shoots. His shooting average of .407 is second only to Dickie Hemrick in the Big Five. Likins has made 35 of 86 field goals and 36 of 56 free throw attempts for 106 points.

Likins is capable of hitting in the double figures as he proved by making 16 points against Davidson and Maryland and 10 against Temple. His play against Davidson was much improved and was a tip-off to the 42 points he has scored in the last three games for an average of 14 points per game. An overall average like that would put him in, third



PAUL LIKINS

... improving center ...

place in the Big Five scoring.

Hazelwood Saw Him

Football coach Ted Hazelwood spotted Likins and interested him in coming to Carolina. Likins was a star in the fast Indiana high school play and was the second high scorer in the northern division.

He is rare combination of athlete and fine student. When he came to Carolina with his father this past summer the first thing he asked to see was the physics department. Paul, who plans to major in physics, didn't want to take any chances on a second rate education.

Likins will have his hands full covering Wolfpack center Mel Thompson. He will have a six inch height advantage over the State star, but Thompson has outperformed most of the taller centers thrown against him this year.

Thompson, a sophomore who has come through very nicely for Everett Case this year, is second only to Bobby Speight in scoring on the State team.

MURALS

Wednesday's Table Tennis
1 Chi Psi 2 Sigma Nu 4 2
0 Medical School 2 Connor 1 3

BASKETBALL

19 Phi Delt Theta 3 ZBT 48
24 Dental School 3 Connor 23
29 AKPsi Theta Chi 1 63
28 Battle Medical School 3 43
26 Connor 1 Emerson 60
22 Dental School 2 Ruffin 1 49
0 Manley 2 Winston 4 2
(By forfeit)
13 Sigma Nu 1 DKE 1 32
54 Stacy Medical School 2 11
63 NROTC 1 Pettigrew 43
32 Alexander 2 Medical School 4 28
20 Everett 1 Winston 2 45
30 NROTC 1 Winston 1 30
30 NROTC 1 Winston 1 30



Cage Reunion To Be Feb. 1

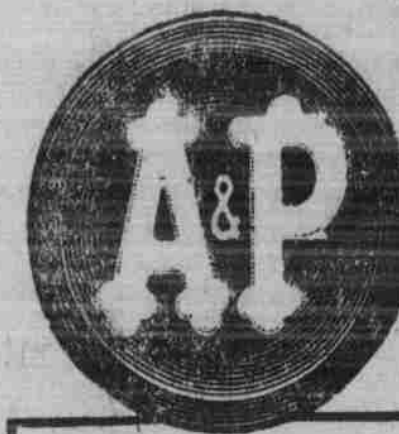
Plans are going forward for a gala reunion of four famous Carolina basketball teams of the early 'twenties' which won Southern championships.

The players, coaches and managers of the 1922, 1924, 1925 and 1926 combined Southern teams will meet at the Helms Foundation

University Athletic Association at a dinner before the game and other functions are being planned.

The 1924 team was undefeated in the regular season before sweeping the tournament and was designated as national champion

Where but A&P Can You Find Such Money-Saving



food values

Ann Page Tomato
KETCHUP

14-Oz Bot. **19c**



Customers' Corner

What is VALUE—anyway?

You've probably seen the word hundreds of times. Ever stop to think of what it means? Just this: Getting your money's worth!

At A&P we see to it that value really means something—not just on a few items—but on everything we sell in our stores. We think that adds up to serving you better, greater satisfaction and just plain good sense. Don't you agree?

CUSTOMER RELATIONS DEPT.

A&P Food Stores
420 Lexington Ave.,
New York 17, N. Y.

MEATS

- Rib End PORK ROAST lb. 39c
- Loin End PORK ROAST lb. 51c
- Center Cuts PORK CHOPS lb. 67c
- 4 to 6-lb. Short Shank SMOKED PICNICS lb. 45c
- Wilson Corn King SLICED BACON .. 1-lb. pkg. 47c
- Nice Size FAT BACK lb. 21c
- Super Right Choice Western Beef Porterhouse Steak lb. \$1.17
- Sirloin Steak, bone in lb. \$1.05
- Chuck Blade Pot Roast lb. 73c
- Short Ribs of Beef lb. 49c
- Ground Beef, fresh lb. 63c

Fruits & Vegetables

- Juicy Florida—Size 46's and 54's GRAPEFRUIT 4 for 25c
- New RED BLISS POTATOES lb. 15c

- Ann Page Peach Plum Pineapple Preserves - - - 16-oz. Pkg. **25c**
- Ann Page Vanilla or Chocolate Sparkle Puddings - - - Pkg. **5c**
- Ann Page Lemon Pie Filling - - - Pkg. **5c**
- Ann Page Grape Jelly - - - 12-Oz. Jar **19c**
- Ann Page Salad Dressing - - - Qt. Jar **49c**
- Ann Page Mayonnaise - - - Qt. Jar **59c**

- Iona Sliced or Halves Peaches - - - No. 2 1/2 Can **29c**
- Iona Tomato Juice - - - 46-Oz. Can **27c**
- Golden Maid Margarine - - - 1-Lb. Pkg. **22c**
- A&P Fine Peas - - - No. 303 Can **22c**
- Mild American Cheese - - - Lb. **49c**

Jane Parker
Golden Loaf Cake
each **25c**

Home Style or Sandwich
Marvel Bread ... 1 1/2-Lb. Loaf **20c**

Iona White Cream Style CORN