



BLOOD DONATORS—Members of Alpha Epsilon Delta, honorary professional fraternity, wait at the hospital to make donations to the Blood Bank. They are from left to right: Frank Farrell, Dave Williams, Bob Haggerman, Billy McLester, Larry Jackson, Pete Killinger, Larry Cutchins, Wade Markham and kneeling, Joe Layton.

Joel Carter To Govern NATS Unit

The National Association of Teachers of Singing has selected Prof. Joel Carter of the UNC Music Department a second two-year term as southeastern regional governor of the Association.

Responsibilities of the office include the promotion and management of numerous activities such as contests, workshops, and study groups for six southeastern states.

UNC Instructor
Dr. Carter, who is chairman of instruction in voice and the director of the University Glee Club and the Chapel Hill Choral Club, was commended at the National Convention in Kansas City, Mo., for his leadership in producing in the Southeast the largest percentage of increase in NATS membership for both 1956 and 1957.

Favorable national attention has also been drawn to "The Resonator", a regional newsletter edited by Carter and mailed quarterly to over 1000 voice teachers in the South and East.

Major Activity
The major activity of the National Association of Teachers of Singing at the present time in this area concerns the annual student auditions. Involving vocalists at three levels,—preparatory, students, and young artist,—these auditions generate interest among singing teachers



DR. JOEL CARTER
Heads Teachers' Group

from Miami to Washington, D. C., and Huntington, W. Va.

Over 50 applicants this season are competing for money prizes and honors. Winner in the young artist division represents the Region at the National Finals for the coveted title "Singer-of-the-Year."

Auditions
This month according to Regional Governor Carter, auditions will be held in Columbia, S. C., and Miami, Fla. On March 1 the North Carolina auditions will be held simultaneously in Winston-Salem and in Raleigh.

Carter, a member of the National Advisory Committee on Vocal Education, was also one of the speakers at the Kansas City Convention recently. His paper was titled "The Case Against Observing Traditions in Singing."

Lenoir Menu

- LUNCH**
Meats
Roast Beef
Baked Cured Ham
Salisbury Steak (Special)
Creamed Chip Beef
Grilled Steak
Vegetables
Mashed Potatoes
Fresh Greens
Mashed Sweet Potatoes
String Beans
Buttered Limas
Blackeyed Peas
- DINNER**
Meats
Roast Beef
Sautéed Pork Chops
Veal Stew (Special)
Grilled Steak
Vegetables
Mashed Potatoes
Cabbage
Blackeyed Peas
Mashed Turnips
Stewed Tomatoes
Spinach
Also
Vegetable Soup
A choice of 15 salads and 12 desserts

A Student's Nervous Fidgeting... And Then A Drop Of AED Blood

There is a nervous fidgeting from the prostrated student on the white table. Soft, soothing, feminine tones float down to quiet the racing heart and assure the apprehensive mind that pain is non-existent.

Yielding to the persuasive voice, the student relaxes, until a sharp prick heralds his betrayal and his blood rushes to fill a plastic sack. Such were the proceedings Friday, when members of the national pre-medical and pre-dental honor society, Alpha Epsilon Delta, met at

North Carolina Memorial Hospital to donate blood. This was the second donation from the AED since the hospital's urgent plea to fill its drastically low blood bank in November.

An important asset to the UNC premedical and pre-dental program, the society forms an integral link between the medical and dental schools and the preprofessional undergraduate school.

It has introduced to the premedical and pre-dental campus some of the top authorities in the medical and dental fields in programs acquainting the student with the kinds of problems he may expect to face in the professional schools and the undergraduate preparations necessary to meet these problems.

Some of these authorities took part in programs serving to acquaint the student with the wonders of a particular branch of medicine or dentistry.

In addition to acquainting the student with needed information about medicine and dentistry, these programs serve to stimulate him and keep before him the goals for which he is striving.

Two of the most noteworthy of these programs were an informal talk on normal childbirth, and a talk on plastic surgery, illustrated by slides.

The society also serves to unite fellow "sufferers" in their struggle with a vigorous premedical curriculum. The exchange of information on what to expect from the different common required courses is as valuable as the parties given at which the premedical and pre-dental students gather to blow off exam steam and to lick common wounds together.

In March, premedical and pre-dental students from all over North Carolina will come to Chapel Hill to attend the Alpha Epsilon Delta State Convention held this year by the AED chapter here at Carolina. Later, in April, a large representation from the Carolina chapter will attend the national convention in Arkansas.

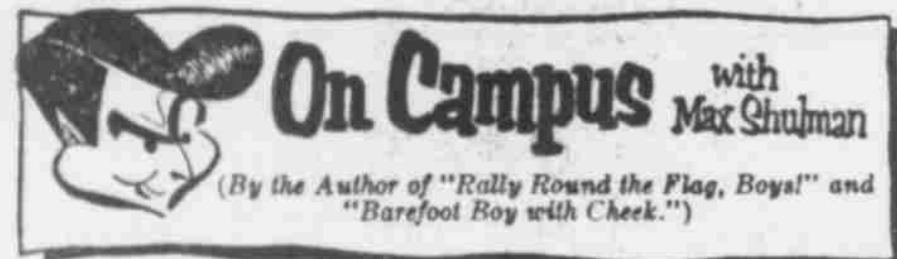
In becoming acquainted with this organization, it is interesting to note perhaps what is its greatest recommendation—Carolina has a nationally recognized chapter of AED but Duke does not!

Late Permission

The UNC Women's Residence Council in conjunction with the Dean of Women's office, has granted one-hour late permission on Friday, Feb. 14. This permission will extend closing hours until 2 a. m. and will be campus wide. It will eliminate the necessity of signing out.

UNC Published Volume Wins National Award

The Society of Architectural Historians has announced the selection of "The Early Architecture of Georgia," published last fall by the UNC Press, to receive its annual highest award. Frederick Doveton Nichols is the author of the prize-winning volume, which has a pictorial survey by the late Frances Benjamin Johnston. The Society selected "The Early Architecture of Georgia," as the outstanding book on architectural history published during 1957.



THE PLEDGE YOU SAVE MAY BE YOUR OWN

Today's column is directed at those young female undergraduates who have recently pledged sororities and are worried, poor lands, that they won't make good. Following is a list of simple instructions which, if faithfully observed, will positively guarantee that you will be a mad success as a sorority girl.

First, let us take up the matter of housemothers. The housemother is your friend, your guide, your mentor. You must treat her with respect. When you wish to speak to her, address her as "Mother Sigafoss" or "Ma'am." In no circumstances must you say, "Hey, fat lady."

Second, let us discuss laundry. Never hang your wash on the front porch of the sorority house. This is unsightly and shows a want of breeding. Use the Chapter Room.

Third, meals. Always remember that planning and preparing meals for a houseful of healthy girls is no simple task. Your cook goes to a great deal of trouble to make your menu varied and nourishing. The least you can do is show your appreciation. Don't just devour your food; praise it. Exclaim with delight, "What delicious pork jowls!" or "What a yummy soupbone!" or "What scrumptious fish heads!" or "What clear water!"

Fourth, clothing. Never forget that your appearance reflects not just on yourself but on the whole house. It was well enough before you joined a sorority to lounge around campus in your old middy blouse and gym bloomers, but now you must take great pains to dress in a manner which excites admiring comments from all who observe you. A few years ago, for example, there was a Chi Omega named Camille Ataturk at the University of Iowa who brought gobs of glory to all her sorors.



Camille hit on the ingenious notion of suiting her garb to the class she was attending. For instance, to English Lit she wore a buskin and jerkin. To German she wore lederhosen and carried a stein of pilsener. To Econ she wore 120 yards of ticker tape. Her shiningest hour came one day when she dressed as a white mouse for Psych Lab. Not only her Chi Omega sisters, but the entire student body went into deep mourning when she was killed by the janitor's cat.

Finally, let us take up the most important topic of all. I refer, of course, to dating.

As we have seen, the way you dress reflects on your sorority, but the men you date reflect even more. Be absolutely certain that your date is an acceptable fellow. Don't beat about the bush; ask him point-blank, "Are you an acceptable fellow?" Unless he replies, "Yeah, hey," send him packing.

But don't just take his word that he is acceptable. Inspect him closely. Are his fingernails clean? Is his black leather jacket freshly oiled? Is his ukulele in tune? Does he carry public liability insurance? And, most significant of all, does he smoke Marlboros?

If he's a Marlboro man, you know he's a lot of man. You know he has taste and discernment, wit and wisdom, character and sapience, decency and warmth, presence and poise, talent and grit, filter and flavor. You will be proud of him, your sorority will be proud of him, the makers of Marlboro will be proud of him, and I will be paid for this column.

The makers of Marlboro wish to announce that Mr. Shulman has been paid for this column and will continue to be paid for bringing you his homely philosophy throughout the school year.



You'll Be Dollars Ahead... if You Head for A&P This Week!

REDUCED! Ann Page Pure Ground

Black Pepper 4-Oz. Can 19c 2-Oz. Can 10c
8-Oz. Can 37c

EXTRA SPECIAL!
Ann Page
Mayonnaise
QUART JAR **49c**

EXTRA SPECIAL! Jesse Jewell Turkey—Beef or
Chicken Pot Pies 4 8-Oz. Pkgs. **75c**

GRAND LOW PRICE! A&P Fancy Quality
Tomato Juice 2 46-Oz. Cans **55c**

SPECIAL! Ann Page Tomato Ketchup 2 14-Oz. Bots. 35c
SPECIAL! Ann Page Assorted Cake Mixes 4 20-Oz. Pkgs. 98c

EXTRA SPECIAL LOW PRICE! "Our Finest Quality"

A&P Apple Sauce 4 16-Oz. Cans **49c**

BROOK'S SOUPS

Chicken Noodle or Vegetable
Beef 2 10-Oz. Cans **25c**
Vegetable 10-Oz. Can **10c**

Burry Oxford Cremes 11-Oz. Pkg. 31c
Sunshine Cheez-Its 6 1/2-Oz. Pkg. 19c
Scot Towels 2 1/2-Doz. 39c
Scotties Tissue 400's 29c

FUNK WAGNALLS
ENCYCLOPEDIA VOLUME NO. 5
NOW ON SALE **99c**
Volumes No. 1-3 & 4 Are Still On Sale

Del-Monte Specials

All Green Asparagus 14 1/2 Oz. Can 40c
Crushed Pineapple 20-Oz. Can 25c
Fruit Cocktail 17-Oz. Can 23c
Tomato
Catsup 21c

F A B

Large Pkg. **34c**
Giant Pkg. **81c**



Spectacular Sale of Meats!

"SUPER-RIGHT" HEAVY WESTERN GRAIN FED BEEF

T-Bone or Porter House Sirloin — Club or Boneless
Steak Lb. **99c** **Round Steak** Lb. **89c**

SPECIAL LOW PRICE! Grade "A" Young Dressed & Drawn
Turkey Hens 10-12 Lb. Avg. **45c**

BUY THESE MONEY SAVERS

COMSTOCK PRE-SLICED PIE
APPLES 2 20-Oz. Cans **39c**

CRISPO BRAND
FIG BARS 2 1-Lb. Pkgs. **45c**

HEINZ FANCY QUALITY—TOMATO
KETCHUP 14-Oz. Bot. **25c**

REDUCED! WARWICK MILK CHOCOLATE
CHERRIES Full Pound Box **49c**

A&P FANCY FROZEN FORDHOOK
LIMAS 4 10-Oz. Pkgs. **65c**

STOKELY SHELLIE OR CUT STYLE GREEN
BEANS 2 303 Cans **37c**

LIBBY OR ARMOUR SAUSAGE
VIENNAS 2 4-Oz. Cans **35c**

HERSHEY BRAND CHOCOLATE
SYRUP 2 16-Oz. Cans **39c**

Free Coffee
Measuring Spoon
With the Purchase of 6-Oz. Size
A&P INSTANT
COFFEE

Coffee Sale!

6c OFF!
NOW ONLY **79c**
LOWEST PRICE SINCE 1953
20c OFF!
NOW ONLY **3.29**
3-LB. BAG

6-Oz. Jar **\$1.09**

Red Circle 1-LB. BAG **77c** 3-LB. BAG **\$2.23**

SPECIAL! "Super-Right"
Pure Pork Sausage 3-Lb. Roll **75c**

SPECIAL LOW PRICE! Cap'n John's
Breaded Shrimp 30-Oz. Pkg. **55c**

Jane Parker
Apple Pie OR
Angel Food 39c EACH

CREAM 1/2-Gal. Can **69c**

A&P Frozen Sliced
Strawberries 4 10-Oz. Pkgs. **69c**

FRUITS and VEGETABLES...

SPECIAL! Tasty
Winesap Apples 4 Lb. Bag **39c**

Large California
Tender Broccoli Fresh Bush **25c**

Large Clean—Trimmed
Fresh Cauliflower Head **35c**

California Tender Golden
Carrots 2 Lb. Bag **17c**

Florida Juicy, Fresh
Oranges 8 Lb. Bag **55c**

Large Idaho
Potatoes 10 Lb. Bag **55c**

| | | | |
|---|--|--|---|
| Camay Soap Regular Bar 10c | Camay Soap 2 Bath Bars 29c | Rinso Blue Lg. Pkg. 81c Gt. Pkg. 34c | Rinso White Lg. Pkg. 35c Gt. Pkg. 83c |
| Lava Soap 2 Reg. Bars 23c | Dial Soap 2 Reg. Bars 27c | Dial Soap 2 Bath Bars 37c | Breeze Lg. Pkg. 35c Gt. Pkg. 83c |
| Oxydol Lg. Pkg. 35c | Duz Soap Lg. Pkg. 35c Gt. Pkg. 83c | Duz BLUE DOT Lg. Pkg. 35c | Surf Lg. Pkg. 34c Gt. Pkg. 81c |

"Super-Right" Fresh Dressed & Drawn Whole
FRYERS **LB. 35c**