

Today's Calendar

All Campus Calendar items must be submitted in person at the DTH offices in GM by 2 p.m. the day before the desired publication date (by 10 a.m. Saturday for Sunday's DTH). Lost and Found items will be printed on Wednesdays and Saturdays only.

TODAY

Sophomore Class Finance Committee—4:30 p.m., Woodhouse Room, attendance required.
 All students who have not seen their Yack proofs may come to the Yack office. This is the last week to see proofs.
 Hillel Sabbath Services—7 p.m., Hillel Building.
 Any graduate student interested in working on the library committee, call Student Government for an appointment. Interviews will be held Friday from 3 to 5 p.m.
 UP Executive Committee — 5 p.m., Grail Room.
 Baptist Student Union — 5:45 p.m., supper, speaker, Rev. Ben Fisher, "N.C. Baptists and

Higher Education." GM Bowling Tournament — See Gary French, manager, at All Star Lanes, Eastgate.
 Carolina Christian Fellowship—6 p.m. Upstairs Lenoir Hall. Robert King will speak.

FOUND

One burro on U.S. 15-501—Contact Delta Upsilon House.

MOVIES

Carolina—The Roustabout Varsity—African Lion

Intramurals

In volleyball action, the Lewi Ladrons beat the Stacy Spikes, 7-15, 15-13, 12-9; Emerson's Cardplayers won over the NROTC Admirals, 13-7, 12-14, 15-10; Everett's Trojans topped Graham White II, 11-6, 10-6; Pi Kappa Phi beat Kappa Sig 9-2, 11-5; Graham White I beat Alexander, 11-2, 10-3; the Everett Rogahs topped Ehringhaus, C, 15-3, 15-4; and Graham won over Old East, 11-6, 15-4.

A Very Special Christmas Gift

When you give an old and rare book from our Old Book Corner, it implies that you know the recipient well enough that you can be sure he'll realize the value of what he's getting.

It means that you know his taste well enough to select a book that will delight him.

It is obviously not something you can chance with just anybody. But when it does work—when a class gives a book to a beloved professor, or a wife to a studious husband — you will be remembered with warmth for years.

The Intimate Bookshop

119 E. Franklin St.
 Open Till 10 P.M.

Playmakers 'Hamlet' Falls Far Short Of Standards Set By 'My Fair Lady'

A Review By the DTH Staff

The Carolina Playmakers' production of Hamlet, alas, falls far short of the remarkably high standard set in the season's first production, "My Fair Lady."

Director Tommy Rezzuto, who scored such a tremendous success with the Lerner and Loewe musical, has found Shakespeare far less digestible with the result that the production lacks both the polish and the appropriate casting that marked his earlier effort.

The play, performed against the somber background of a setting done in grey and black, has a single bright spot, David Gullette, whose interpretation of Hamlet is sensitive and powerful. He is the single member of the cast who seems capable of giving life to his part, for he obviously feels and understands the meaning of his lines. The other players sound precisely as if they are reciting soliloquies memorized for a high school speech presentation.

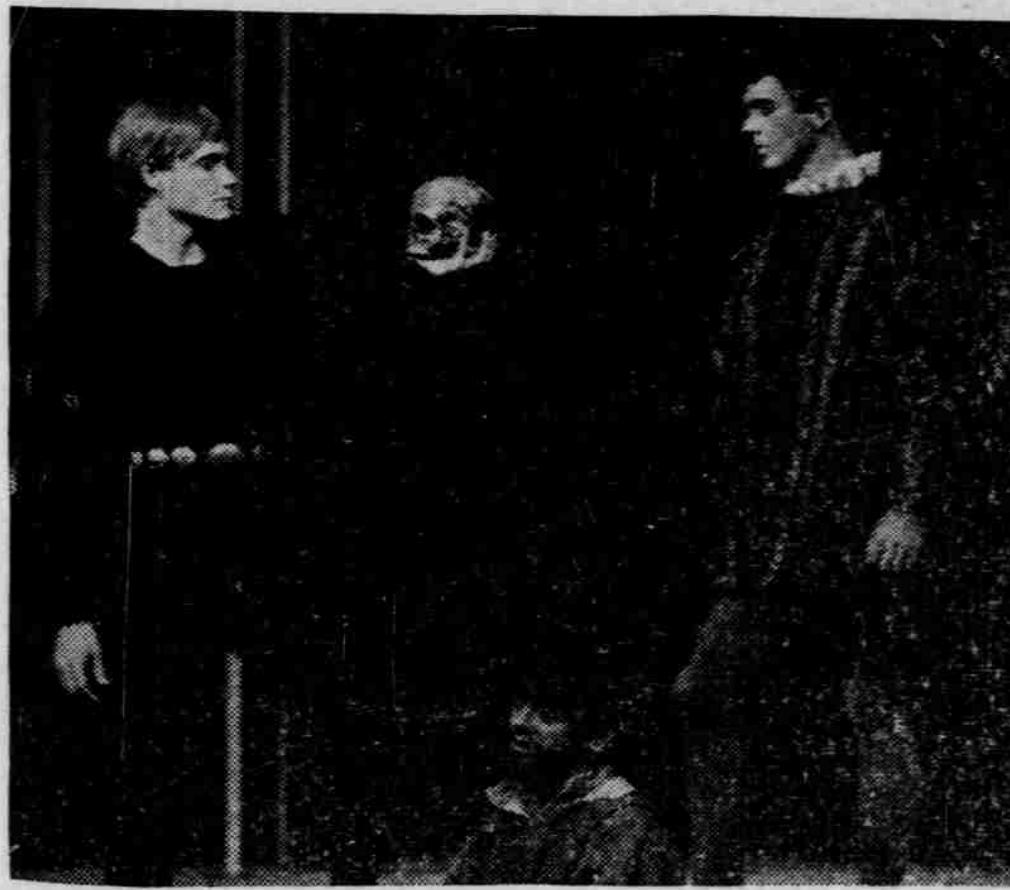
Laertes is played by Pascal Tone, whose father, actor Franchot Tone, received more pub-

licity than David Gullette but did not, unfortunately, endow his son with much of his talent. Pat, a handsome blond, looks the part of dashing young nobleman, but as soon as he speaks he seems more like a wooden soldier than a fiery gallant. He does seem to have mastered one element of his part, for he dies reasonably well, but one finds oneself wishing that he might have his moment of glory in the first act so as to avoid the suffering of struggling through his lines.

Ann West, who plays, Ophelia, also gained "Fair Lady" fame for the part of the housekeeper, Mrs. Pierce. Like Rezzuto she might have been wiser had she retired as undefeated champion, for she will undoubtedly be more kindly remembered for her former performance. Actually, she is an adequate actress in those roles which fit her frame, but she is entirely too maternally for her part and is unable to overcome her distracting qualities by superior acting.

The most delightful character in the play, Polonius, is portrayed reasonably well by Lloyd J. Borstelmann who is able to capture the marvelous absurdity of the old man, but makes him so harmlessly silly that it is difficult to conjure up any feelings of ill-will toward him. The remainder of the cast gives performances which range from acceptable to horrendous. Margaret Cathell as Gertrude is neither outstandingly bad nor good, but Randolph Umberger as Claudius is incredibly lifeless and utterly unconvincing. He seems a great deal more like a henpecked husband than a ruthless murderer or tyrannical ruler.

The typically Elizabethan set, complete with platform and trapdoor, is one of the fine points of the play, for its complete lack of color not only contrasts dramatically with the colorful Italian Renaissance costumes (by Irene



DAVID GULLETTE, Hamlet, (left), and Jim Slaughter, Hotat, (right) talk over the discovery of a skull in the gravedigger scene. The play runs through Tuesday.

Rains), but lends a mood of melancholy to the entire atmosphere. Designed by the director, it is starkly effective, for it is the mere suggestion of a set, with one painted backdrop which is lighted in a dramatic representation of the presence of Norwegian troops in Denmark.

The technical effects experienced a traumatic incident when the microphone over which the voice of the ghost was heard made so much noise that the audience seemed convinced of his presence, even when he was supposed to be wandering elsewhere; but they were, for the most part, sufficient.

Any Contributions

The Chapel Hill area will be canvassed for old clothes, toys and games Monday through Thursday by members of Pi Lambda Phi fraternity. All proceeds will be given to the Chapel Hill Junior Service League.

Persons wishing to make specific contributions may contact Ken Mann at 968-9025.

ESTIMATES LOWER

The U. S. Public Health Service's National Health Survey, just completed, reports 14.6 million adult Americans with "definite heart disease" and an additional 12.9 million with "suspect heart disease." American Heart Association estimates have been considerably lower, indicating some 10 million men, women, and children with cardiovascular disease in the United States.

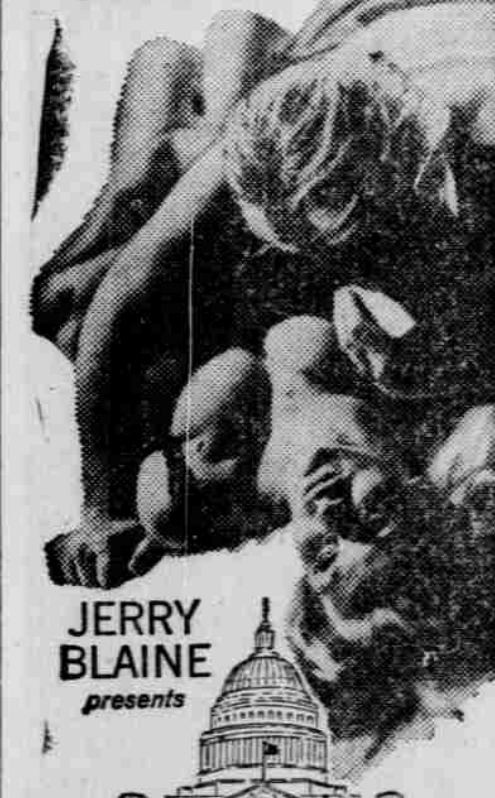
Varsity

FRI. & SAT.



JERRY BLAINE presents

BUDDY BARKER'S political scandal... **GALS**, fast talking **GUYS**, **SEX**, **BLACKMAIL**, and **PAYOFFS** for personal **POWER!**



PARTY GIRLS FOR THE CANDIDATE
 MAMIE VAN DOREN
 JUNE WILKINSON
 TED KNIGHT/ERIC MASON/RACHEL ROMEN
 and the PARTY GIRLS
 Produced by MAURICE DUKE - Directed by ROBERT ANGLIS
 Starring by JOYCE ANN MILLER - QUENTON VALE
 A GOSWART PRODUCTION

- Arthur Hayes -

(Continued from Page 1)

he knows the areas of the Legislature and of Student Government which need improvement.

"The main problem with Student Legislature," he said, "is its large turnover in membership. We need more really qualified people to make Legislature their main activity."

"So many really creative people don't come in touch with SL or Student Government," he said. "We need new talent and fresh interests."

True to his beliefs, Hays is still actively compiling his "Omnibus Bill" which will completely rewrite the codifications and statutes of all Student Government bodies and eliminate all inconsistencies.

He spent last summer compiling a card catalog for the third draft of this bill, and all legislators shudder in horror to contemplate its period of consideration.

They are well aware that, in Hays words, he is capable of being "a pillar of brass by day and a pillar of gas by night."

Until he leaves Student Government next fall, members of the UP caucus will tell you that Arthur Hays, like death and taxes, is the only unavoidable consequence of life.

It's fun eating at the **ZOOM-ZOOM**

Today's Specialty 11:30 - 2:30

Fillet of Flounder
 French Fries
 Cole Slaw
 Bread & Salad

99c

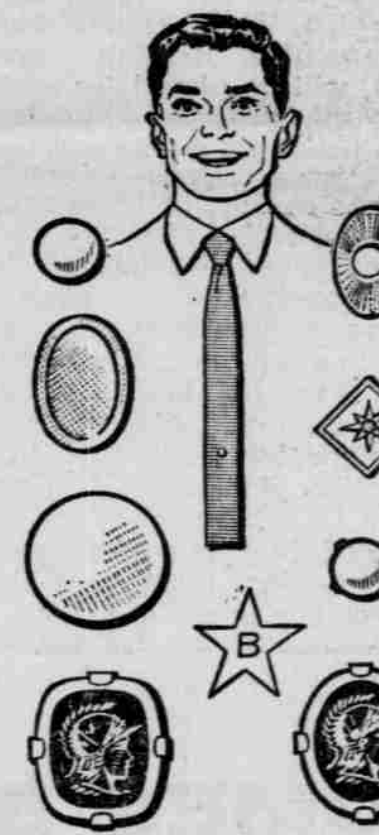
CHARTER FLIGHT TO EUROPE

New York to London
 Departs June 10
 Returns September 12
\$250 Round Trip
 Available only to:
 • Students
 • Faculty
 • Staff Members of UNC and their immediate family

Contact:
Burt Wolfson
 942-1191
 942-3225

and Christmas Wrapping is on the house at the Intimate

for him at Christmas



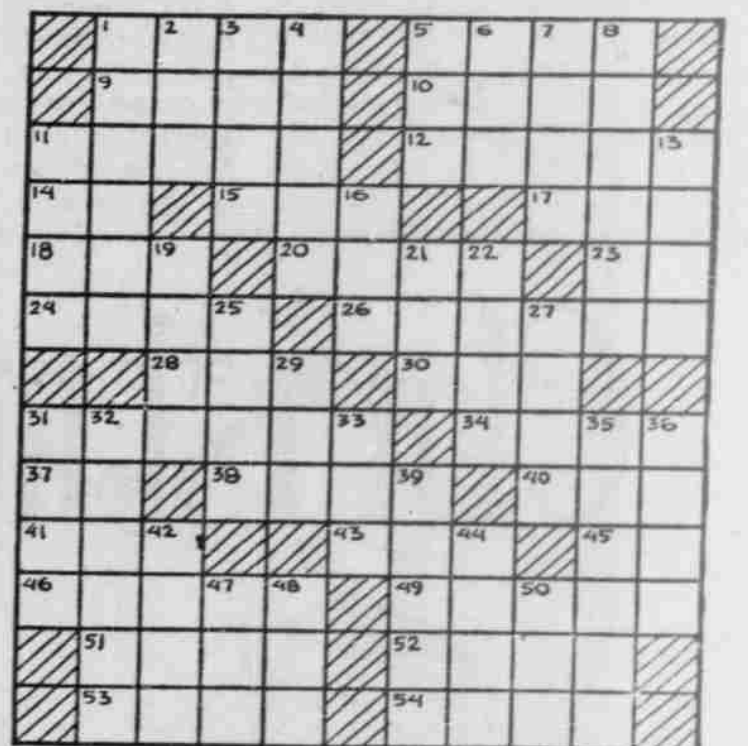
Smart focus of attention on any tie: distinctive Tie Tacks by Ballou, in 14 K Gold, Gold Filled, or Sterling.

WENTWORTH & SLOAN

DAILY CROSSWORD

- | | | |
|--------------------------------|--------------------------------|----------------------|
| ACROSS | DOWN | |
| 1. Guns: sl. | 1. Association of farmers | 21. African worm |
| 5. Possesses | 2. French river | 22. Skulk |
| 9. Uprising | 3. Little children | 23. Lubricates |
| 10. Simpleton | 4. Vapor | 27. A fence piece |
| 11. Italian poet | 5. Away | 29. Scotch river |
| 12. Tribunal | 6. Court | 31. A kind of spring |
| 14. At home | 7. Girl's name | 32. Haunt |
| 15. Maxim | 8. Mud | 33. Period of time |
| 17. "Much About Nothing" | 9. A former Mexican president | 35. Weirily |
| 18. Moslem title | 10. On the "Floss" | 36. A metal vetch |
| 20. "The _____" | 11. Constellation | 39. Valued |
| 23. Proceed | 12. CIPHER | 42. Chap |
| 24. Cipher | 13. Disease of sheep | |
| 26. Journeyed | 14. Macaw: Braz. | |
| 28. Disease of sheep | 15. Became less hot, as liquid | |
| 30. Macaw: Braz. | 16. N. Europe ship canal | |
| 31. Became less hot, as liquid | 17. Siberian gulf | |
| 34. N. Europe ship canal | 18. Scorch | |
| 37. Siberian gulf | 19. Sheltered side | |
| 38. Scorch | 20. Doctrine | |
| 40. Sheltered side | 21. Bark | |
| 41. Doctrine | 22. Sun god | |
| 43. Bark | 23. Depart | |
| 45. Sun god | 24. Lukewarm | |
| 46. Depart | 25. Mix | |
| 48. Lukewarm | 26. Jewish month | |
| 51. Mix | 27. Oceans | |
| 52. Jewish month | 28. Refuse to grant | |
| 53. Oceans | | |
| 54. Refuse to grant | | |

- | | |
|----------------------|--------------------------|
| 21. African worm | 44. Goddess of volcanoes |
| 22. Skulk | 47. By way of |
| 23. Lubricates | 48. Bitter vetch |
| 27. A fence piece | 50. A play on words |
| 29. Scotch river | |
| 31. A kind of spring | |
| 32. Haunt | |
| 33. Period of time | |
| 35. Weirily | |
| 36. A metal vetch | |
| 39. Valued | |
| 42. Chap | |



LA PIZZA wishes you a Merry Christmas with a Pre-Holiday Special

Small Pizza or Large Spaghetti or Lasagne or Ravioli with Salad and Beverage

Your Choice \$1.50
 Plus Free Egg Nogg

The Pine Room

Extends Best Wishes to Each and all for a very Merry Christmas and a Happy New Year

Closed Dec. 19th
 Reopen Jan. 3rd

give him "the works!"

pocket secretary by ROLFS

Here, the efficiency expert every man appreciates. Rolfs leather-lined Pocket Secretary has a bill compartment, place for check book, two pockets for cards and photos, a leather-backed memo pad with golden tab pull-out. Sum total: some gift!

\$7.95 plus tax

smooth cowhide, in wended black, brown, tan and mahogany

Wentworth & Sloan

CLASSIFIED ADS

THE LIFE INSURANCE YOU didn't buy may one day cost your family far more than it saves you. For sound advice on your life insurance program, call Northwestern Mutual Life. Bill Buell, Jack Nicholson, and Arthur DeBerry. Telephone 942-6966.

PART TIME WORK—40 HOURS total. Copying, tabulating records in Central Records in Hanes. \$1.50 per hour. Keep your own hours. Call 968-0957 after 5:30.

1958 CHEVROLET BELAIR. 2-door hardtop, power steering and brakes, automatic transmission, push-button windows, white sidewall tires and deluxe interior. \$449. Call 968-5757.

SOLVE YOUR CHRISTMAS shopping problems—give a gift certificate from the Jane Haslem Gallery—113 W. Franklin—Certificates on paintings, drawings, prints, artist materials or custom framing—North Carolina's finest art gallery.

BY OWNER 1959 PORSCHE 1600 Super Roadster. roll up windows. A-1 condition. For further information call Greensboro 275-7360 after 6.

STUDY AIDS FOR PRE-CHRISTMAS Quizzes—Cliff Notes, Monarch Review Notes, you name it and we'll have it. THE INTIMATE BOOKSHOP, 119 East Franklin St.

FOR SALE: 1962 MG 1600 MK II convertible, excellent condition. Call 929-1679 after 5 p.m.

WANTED: MALE STUDENTS to share apartment located one-mile off-campus. Call 968-6175 after 4 p.m.

PEANUTS (2-11)