

Today's Calendar

All Campus Calendar items must be submitted in person at the DTH offices in GM by 2 p.m. the day before the desired publication date (by 10 a.m. Saturday for Sunday's DTH). Lost and Found notices will run on Wednesdays and Saturdays only.

TODAY

Campus Chest Interviews—2 to 5 p.m., Campus Room, Y Building, last day.
Budget Committee—3 to 5:30 p.m.
Biostatistics Seminar—3 p.m., School of Public Health, "Applied Regression Analysis."
State Student Legislature—4 p.m., Roland Parker.

'September Party' Takes 1st Prize In Art Exhibition

A colorful abstract painting, "September Party," was selected for the \$400 purchase prize at the third annual art exhibition at the School of Public Health.

The winning piece was painted by George Kachergis, associate professor in the Department of Art. It was his 16th award for his paintings.

Kachergis, a faculty member here since 1949, has exhibited in three international shows, 15 national shows and 45 regional shows. He has held 15 one-man exhibitions.

Ben F. Williams, curator of the N. C. Museum of Art, was the judge for the 1964 exhibit here.

Miss May Davis Hill curator of Ackland Art Center here, is directing the hanging of this year's entries in the offices, auditorium and corridors of the School of Public Health.

Need A Job?

These companies will recruit on the campus next week.

Monday — Swift & Co.; Kline & French Labs (will interview women); Congoleum—Nairn, Inc.; Chubb & Son, Inc.; J. P. Stevens & Co., Inc.; Camps Mondamin and Green Cove (summer work); Harvard Graduate School of Business.

Tuesday — Merrill Lynch, Pierce, Fenner & Smith, Inc. (will interview women); Equitable Life Assurance Society (summer work for junior math majors); International Business Machines (will interview women).

Wednesday — J. B. Ivey & Co. (will interview women); Bank of New York; Mutual Life Insurance Company of New York; International Business Machines.

Thursday — Pure Oil Company; First National Bank of Atlanta; National Biscuit Co.; Cooperative College Registry; Good Humor Corporation (summer work).

Friday — Pepsi-Cola Co.; Associate Investment Co.; Dow Chemical Co.; Pilot Life Ins. Co. (summer work); Cooperative College Registry.

Women's Co-ordinating Board—

4:30-5 p.m., Woodhouse Room.

Murdoch Committee—2 p.m., Y-Court.

Sophomore Executive Committee—4 p.m., Roland Parker II.

UP Caucus — 6:30 - 7:30 p.m., Grail Room.

Senior Class Social Committee—5 p.m., AD Pi House.

Informal tea for girls interested in joining Angel Flight — 7 p.m., Cadet Lounge.

Last chance to reclaim money and/or books from the Alpha Phi Omega Book Exchange. Claims should be taken to the APO Office in the basement of Smith Dormitory (entrance facing Swain Hall) today between 11 a.m. and 4 p.m.

Sophomore Executive committee meeting—4 p.m., RP II, GM.

BRIEFS

Applications for Paris Exchange are due Saturday. Applications can be picked up in Y-Court or at GM Information Desk. Interviews will be held Tuesday and Wednesday.

Military week will be held March 1 through March 5. All midshipmen and cadets should sign up for competition as soon as possible.

MOVIES

Carolina—The Pumpkin Eater

Varsity—Two on the Guillotine

FRIDAY

Film Committee—3 p.m., Grail Room.

"Conflicts in the Creation of a Water Policy"—4 p.m., School of Public Health, speaker will be Dr. Siegfried Von Wantrup, visiting lecturer from University of California at Berkeley.

Hill Sabbath Services—7 p.m., speaker, Dr. Lewis Lipsitz, "Prospects for Political Idealism."

Baptist Student Union—5:45 p.m., Dr. Clifford Reifer, "The Student's Image of Himself as a Person."

Carolina Christian Fellowship—6 p.m., speaker will be Tuis-hem Shishak.

Support
The
Heart
Fund
Drive

6,000 Man-Hours Go Into Production

For 'Oh Dad, So Sad'



"At least 50 people put in an average of six hours a day for 21 days to produce a Playmakers' show."

That's well over 6,000 man hours.

When the Carolina Playmakers' production of "Oh, Dad, Poor Dad, Momma's Hung You in the Closet and I'm Feelin' So Sad," reaches the stage on Wednesday's opening night performance, the audience will enjoy the fruit of over three weeks of labor by a hard-working dramatic arts staff.

Director of "Oh, Dad," and head of the Department of Dramatic Arts Kai Jurgenson, says that the production of a Playmakers' play is the result of cooperation among four different production crews.

"It takes time," he said. "Right now there are people swarming all over the stage, up in the catwalks, in the sound booth, and across campus in the workshop."

"I, myself, have put in over seven hours today getting things ready for rehearsal. The director works with the actors, the set designer works with the scenery crew, the light designer works to make sure the lighting is right, and over in the workshop, the costume crew is preparing costumes," Jurgenson said.

"Next Saturday the four crews get together for the first time for a technical rehearsal," he said. "It's not as if we were four people who suddenly meet each other Saturday night. We've been working in close contact, but the only way to put together a play is to divide

and conquer." Jurgenson says that the coming show took its first steps toward reality within the director's mind. "After I decided what I was going to do with the show," he said, "I got together with the set designer and designed the stage. Then came the tryouts for parts; the rehearsing and the ironing-out of technical problems."

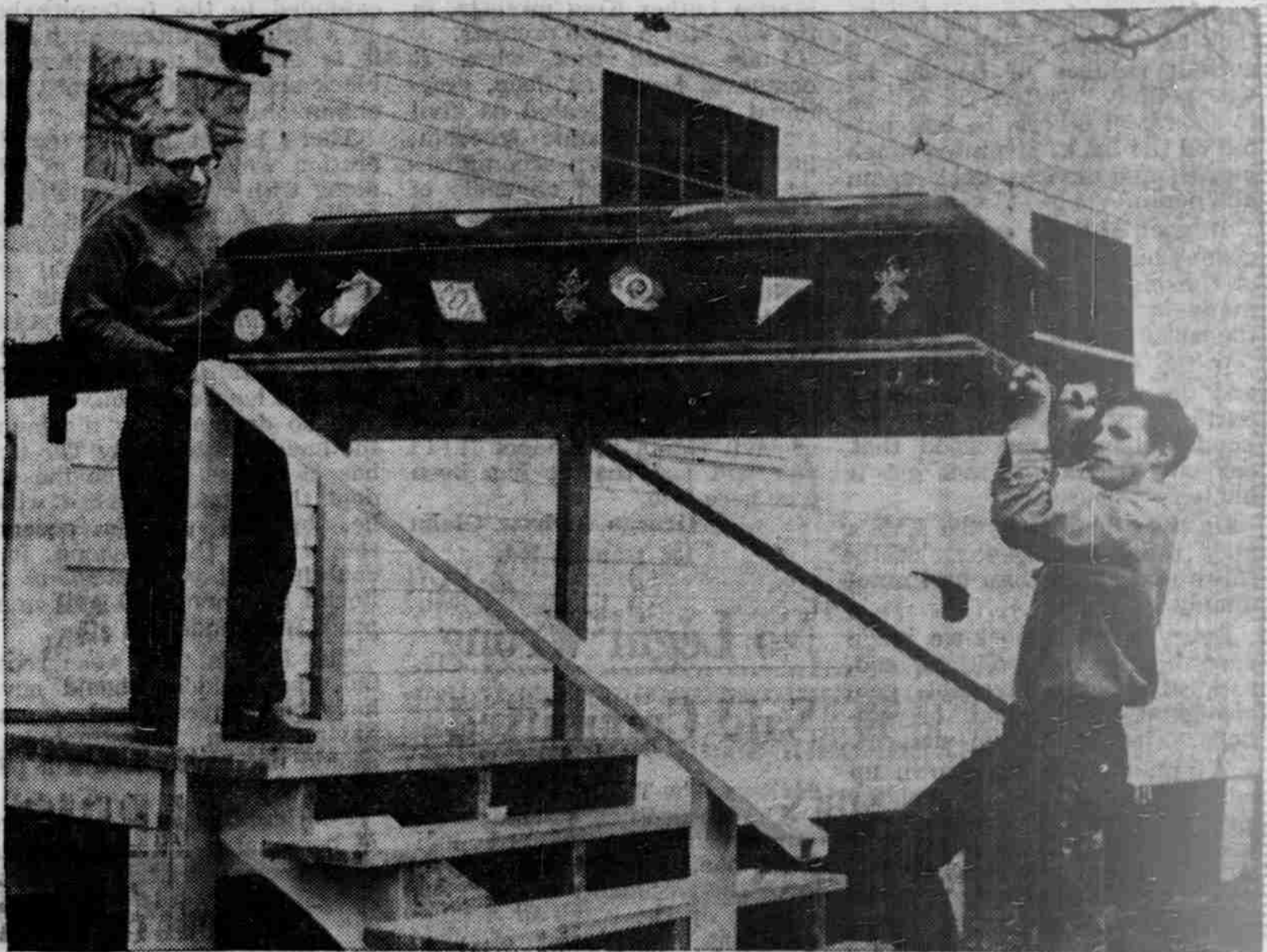
The director admits that "Oh, Dad," is not a typical play as far as technical problems are concerned. Props and technical effects for the show include a mechanical venus fly trap and an animated man-eating fish named "Cleo."

"The play is like a magic show with the magician pulling a new trick out of his hat every few seconds," Jurgenson said. "Not every production is that difficult."

The massive production staff, consisting of everything from first year Dramatic Art students to graduate students, knows its job and keeps the play improving, said Jurgenson.

"Of course, we're a training theatre," he said. "If we had a crew of highly trained professional union-member personnel, it would certainly go easier. Part of our job here is to make sure we're faced with production problems."

"The conscientious dramatic arts student is as highly trained and dedicated to his work as a medical student. Some of the people who have been here for some time are skilled in every phase of play production," he said.



THE PART of "Oh Dad" you'll never see: Playmakers are busy this week preparing for their next production. Scenery goes up (above) as a group of Playmakers hammer and saw. A casket? That's right. Two students combine efforts (right) to hoist the heavy box into the shop. Scene Designer Tom Rezzuto (right in picture on left) talks over work with director Kai Jurgenson.

Photos By
Jock Lauterer

Text By
Kerry Sipe

New Columbia Releases At The Record Bar



CL 2210/CS 9010 Stereo/
CQ 660 Tape
The, sweet sooth sound of the Ray Conniff Orchestra and Chorus in a splendid collection of standard favorites like "Tiger Rag," "High Noon," "Friendly Persuasion" and 9 more.



DCL 315/D3S 715 Stere6
(A 3-Record Set)
Gathered in one glorious album are four best loved piano concertos; Tchaikovsky: Concerto in B-Flat Minor/Grieg: Concerto in A Minor/Rachmaninoff: Concerto No. 2 and "Rhapsody on a Theme of Paganini." Features Eugene Ormandy and the Philadelphia Orchestra, Leonard Bernstein and the New York Philharmonic, soloist Philippe Entremont.



C3L35 (A 3-Record Set)
The swingin', jivin', roarin' twenties — captured but untamed by Columbia Records in a dazzling 3-record set, starring Duke Ellington, Bessie Smith, Louis Armstrong, Bing Crosby — to name only 4 of 39 all-time greats.



CL 2291/CS 9091 Stereo
An inimitable performance by an inimitable jazz musician. Monk performs "Lisa," "April in Paris," "That Old Man," "Pannonica," "I Love You," "Just You, Just Me" and "Teo."



ML 6084/MS 6684 Stereo
A poignant recitation by Adlai Stevenson of Abraham Lincoln's immortal words. A luminous reading by Eugene Ormandy and the Philadelphia Orchestra of the stirring Copeland score. This is the "Lincoln Portrait." (Also includes Copeland's "Fanfare for the Common Man" and Ives' "Three Places in New England.")



ML 6089/MS 6689 Stereo/
MQ 708 Tape
Tchaikovsky's beautiful Sixth Symphony — the "Pathétique" — superbly performed by the New York Philharmonic under the masterful baton of Leonard Bernstein. "... a turbulent performance that will long be remembered." — N. Y. World-Telegram & Sun



ML 6096/MS 6696 Stereo
Superb and profound interpretations by pianist Glenn Gould of three Beethoven Sonatas—No. 5 in C Minor, No. 6 in F Major and No. 7 in D Major. Mr. Gould is "... an enormously gifted musician and a pianist of spectacular attainments." — N. Y. Herald Tribune.



ML 6085/MS 6685 Stereo
Faithful to the genius of Brahms, George Szell and the Cleveland Orchestra render a vital interpretation of the majestic 3rd Symphony and the dynamic "Variations on a Theme by Haydn."

THE RECORD BAR

CHAPEL HILL
JACKSONVILLE

DURHAM
GAINESVILLE

DAILY CROSSWORD

1	2	3	4	5	6	7	8	9	10
11					12				
13				14		15			
16			17		18		19		
23	24	25		26		27			
28			29		30				
31				32		33			
34				35		36			
37	38		39		40	41	42		
43			44		45		46		
47				48		49			
50									
51									

ACROSS
1. To provide food
6. Embrace
11. Living
12. A gay party
13. Body of water
15. English wasteland
16. Foot digit
17. Male swan
19. Distress signal
20. Sign of future tense
22. Brazilian palm
23. A ribbon for the waist
24. Slip-knots
25. On a par
30. Divulge inconsiderately
31. Leaps at
33. Minus
34. Norse god
36. Super-market containers
37. Sum up
39. Cebrine monkey
40. Grimalkin
43. South American bird
45. Fruit
47. Seige-like colors
49. Taste
50. Lets it stand: print
51. Retains

DOWN
1. Fling loosely, as a voice
3. Pneumatic tube
4. Girl's name
5. Come to
6. Cadmium: sym.
7. Escape: sl.
8. Biblical name
9. Ice boats
10. Perseveres
14. A sound of suffering
18. Soft, globular mass
20. Chases: sl.
21. Hangs loosely, as a dog's tongue
23. Edges of cloth
24. Conduit for water
25. Source of light
27. Girl's nickname
29. Marshy meadows
32. Go away!
36. News-stand
38. Venture
40. Point of land
41. On the apex
42. Craggy hills
44. Squirrel's cache
46. Actress: West
48. Steamship: abbr.

PICTA DEAP
CANON ADIOP
AGING DEARY
READABLE LEAT
REPER BE
BIARY GALLERY
ROSE MOOSE
RELUVE
LITCA COALER
FALISE PROVE
PLAISE EDGES
SPAR DIVES

Yesterday's Answer
41. On the apex
42. Craggy hills
44. Squirrel's cache
46. Actress: West
48. Steamship: abbr.

