



Follow the team with Saturn Airways!

FOOTBALL CHARTER FLIGHTS AT THRIFTY GROUP FARES ANYWHERE IN THE U.S.

No need to miss the big "away" games... get up a group and join the team via economical Saturn Airways charter flight service! We'll fly your group where you please, when you please anywhere in the country, and return. Saturn is the specialized charter airline, the first choice of college groups from coast to coast. Over 18 years' experience. Luxurious Douglas aircraft, personalized service, veteran pilots and crews. Full assistance on travel details. See any travel agent, or write Saturn today for details!



CERTIFICATED SUPPLEMENTAL AIR CARRIER

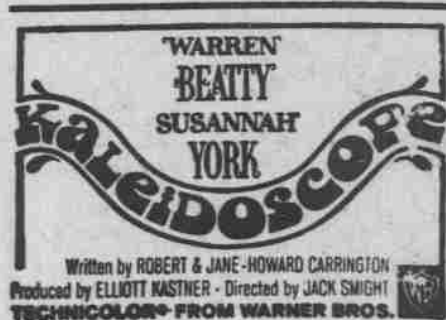
GENERAL OFFICES:
 P. O. Box 216, Airport Branch, Miami, Florida 33148 • (305) 833-7511
 Jamaica, New York 11430
 P. O. 265, John F. Kennedy Int'l. Airport (212) 995-8765
 Oakland, California 94614
 P. O. Box 2426, Oakland Int'l. Airport (415) 962-2719
 Chicago, Illinois 60602
 6 North Michigan Avenue (312) 263-0663
 London, S.W. 1, England
 18/20 Regent Street 839-5779
 Berlin 42, Germany
 Zentral Flughafen Tempelhof 698-0322

'Holiday' Article Errs They Are Cherry—Not Dogwood

By MIRIAM HENKEL
Special to the DTH

"Chapel Hill in spring is redolent of hyacinth and honeysuckle, bright with wisteria, Judas, dogwood and forsythia, all blooming at the same time. At right a coed walks to morning class beneath a canopy of dogwood."

Thus read Frances Gray Patton's article in HOLIDAY magazine describing a photograph taken in Chapel Hill for the August issue of the magazine.



Written by ROBERT & JANE HOWARD CARRINGTON
 Produced by ELLIOTT KASTNER - Directed by JACK SMIGHT
 TECHNOLOGY FROM WARNER BROS.
Varsity
 NOW PLAYING

But Dr. H. R. Totton, retired University of North Carolina botany professor, notes that the "canopy of dogwood" is not dogwood at all, but the cherry blossoms which burst forth in Chapel Hill for a brief interlude each spring. True, flowering dogwoods are as closely associated with the South as magnolias or mint juleps. The photograph with its profusion of emerald foliage and rosy petals sings of springtime in the South. And it's too bad that the trees aren't dogwood. Just knowing they were would add a touch of perfection.

There is a period when the dogwood and cherry trees bloom simultaneously in Chapel Hill, but the similarity ends there, according to Dr. Totton. The cherry trees in Chapel Hill start blooming in late March while the dogwoods usually start to bloom in April.

The pink Japanese cherry blossom is fairly large with each growing on an individual stem. It belongs to the rose family, genus *prunus*, of

which there are 175 species and hundreds of varieties.

The cherry tree is also characterized by a smooth bark. The leaves growing in alternating spirals have a serrate edge.

The dogwood blossom consists of a small, yellow, clustered flower surrounded by four white bracts (leaves). The dogwood family is cornaceae. Dogwood bark, like that of the persimmon, grows in little squares giving a checkered effect. The smooth-edged leaves grow opposite each other on the twigs.

Although cherry blossoms may not bespeak the South in the same way a flowering dogwood would, still a rose is a rose is a rose. Or rather, a cherry blossom is a cherry blossom.

Some Arctic glaciers have been estimated to furnish as much as 200 billion cubic feet of ice to the sea each year in the form of icebergs.

The one-humped camel can maintain a trotting pace of about nine miles an hour for many hours.



EVA LEE BLAINE, UNC coed, under canopy of cherry boughs.

Another

King William

RESTAURANT

—STEAKS—CHICKEN—SEAFOOD—

IMPORTED and DOMESTIC BEVERAGES

SPECIAL THIS WEEK

RIB-EYE STEAK

Served with Tossed Salad

(Choice of Dressing)

French Fries — Rolls and Butter

\$1.25

King William

RESTAURANT

1 1/2 MILES FROM CAMPUS
PITTSBORO ROAD

Open for Breakfast, Lunch and Dinner Every Day

1 1/2 MILES FROM CAMPUS ON PITTSBORO ROAD

THE CENTER FOR NAVAL ANALYSES OF THE FRANKLIN INSTITUTE OFFERS

Rewarding Opportunity to perform critically important scientific tasks for the Navy or Marine Corps!

IMMEDIATE CAREER OPENINGS FOR:

Physical Scientists, Mathematicians and Statisticians, Systems Analysts, Operations Research Analysts, Research Engineers, and Social Scientists, with Masters degree or better

Excellent starting salary and fringe benefits. CNA investigates all major warfare fields, including problems of future force requirements and allocations, the cost effectiveness of proposed Naval systems, the evaluation of new weapons and sensors, technical aspects of strategic planning; and the correlation of research and development programs with military needs.

A representative of CNA will interview applicants at your campus Placement Office on **Oct. 28**

or write for an interview, to: James C. P. Hibarger

CENTER FOR NAVAL ANALYSES
1401 Wilson Blvd., Arlington, Va. 22209

CNA CENTER FOR NAVAL ANALYSES OF THE FRANKLIN INSTITUTE

INS - Institute of Naval Studies DEG - Operations Evaluation Group
 SEB - Systems Evaluation Group NAVWAG - Naval Warfare Analysis Group
 MCOAG - Marine Corps Operations Analysis Group

An equal opportunity employer

Hickory Farms OF OHIO suggests

Impress that girl you're bringing down from WC for the Homecoming Game — show her a Carolina Man always dines in discriminating styles — even when picnicking!

This Week! A Homecoming Game — Pac

A DISCREET STADIUM-MEAL FOR 2 CONTAINS:

- One whole Parti-Loaf of Rye Bread
- 1/2 pound Tangy, Smoked Beef Stick
- One jar sweet-hot mustard
- One package of Rummets
- One whole 'Lil Smokey Cheese

ALL FOR ONLY \$2.98

CALL 929-1398 AND PLACE YOUR ORDER!

Hickory Farms OF OHIO

Hathaway has a fatuous conversation with Jonathan Winters

Hathaway: Mr. Winters, how do you like our new Club shirts?

Winters: Fine. Except for that tapered waist.

Hathaway: Not enough?

Winters: Too much. The first time I wore one, I looked so darned slim that people would come up to me in the street and give me money for a meal.

Hathaway: Pretty embarrassing, but...

Winters: Then, girls would feel sorry for me and take me home for dinner. Their mothers would take one look at my tapered middle and pow! I'd spend hours at the table.

Hathaway: I see. But...

Winters: And I want to tell you it's pretty frustrating. After all that food, I was too tired to do anything but go home and sleep.

Hathaway: Yes, I can understand that. But taper apart, how's the rest of the shirt?

Winters: Great. As soon as I get some weight off, I'll be wearing 'em again.



Jonathan Winters, star of television, motion pictures, etc., is both author and cartoonist of the recently published "MOUSE BREATH, CONFORMITY AND OTHER SOCIAL ILLS." In our picture he is wearing Hathaway's Discocheque. About \$9.50.