

'You Can't Take It With You'

Latest Playmakers Presentation Is A Crowd Pleaser

By OWEN LEWIS
DTH Reviewer

Playmakers' Theater—A revival of the play in three acts, "You Can't Take It With You," by Hart and George S. Kaufman, directed by Foster Fitz-Simmons, sets by Tom Rezzuto, costumes by Camille Hardy and lighting by Stanford Eskridge, presented by Carolina Playmakers, opened Wednesday night and continues nightly at 8 p.m. with a matinee Sunday at 2:30 p.m. Cast includes Louise Lamont, Margaret Howell, Liddle Cobb, J. W. Talarowski, Douglas Barger, Jim Chesnut, Edward Waddell, Walter Spearman,

Lisa Sherman, Pat Hurley, Rick Dula, Michael Hardy, Madge Bunce, Arthur Cain, Melody Dickson, David Offill, Bob Gaston, Robert Hardison and Betty Setzer.

Maybe "You Can't Take It With You," but you can surely have fun with it while you're there. This Pulitzer Prize-winning 1936 comedy is a real crowd pleaser. So despite a lackluster opening night performance under lagging direction, a full house had a rollicking evening laughing at extremely funny lines and the zaniest of situations. Even af-

ter nearly three hours of it, the audience was enthusiastic and there were curtain calls aplenty.

The set, costumes and lighting were first rate—a real period piece. The direction was a major logistical problem, with as many as 16 persons on the little Playmaker stage at one time, along with a xylophone, a printing press, a ballet dancer, fireworks and what have you.

Walter Spearman, as Martin Vanderhof, presides over an eccentric household. He had decided 35 years earlier that "you can't take it with you," and had simply stopped going

to work and settled for a life of attending commencements and going to zoos. His menage is a group of people who do exactly what they want to do, and they are confronted in the second act by the Wall Street-type parents of a young man who wants to marry Grandpa Spearman's granddaughter. The climax comes at the end of this act when bedlam breaks loose.

Basically it is Spearman's show. He begins by trying too hard to move like a grandpa and talk like a grandpa. But then he relaxes and just is the grandpa that he is, and comes off with a great per-

formance.

There are some highly effective actors in minor roles—J. W. Talarowski, although miscast, uses a keen sense of timing to bring off the role of Paul Sycamore. Rick Dula, with an effective voice and a

powerful stage presence, is a convincing Tony Kirby. Ed and Essie, particularly Ed (Jim Chesnut), are among those who effectively bring off the zaniness on which this show is based, and which amateurs find so hard to cope with.

On the negative side, the three G-men and the Internal Revenue agent must have been picked off the afternoon Trailways bus from Gibsonville, and Kolenkhov, the Russian dancing teacher, overacts all the way.

The denouement in the third act drags, but the play finishes on a wild and happy note. For all the opening night jitters, no one really dropped the dishes, and all in all, it was a good evening's entertainment.

Eternal City Faithful Feel Close To Christ

VATICAN CITY (UPI) — The eternal city is the place where the faithful can celebrate Christmas amid things which tradition says were close to Christ.

The Vatican and Rome's nearly 500 churches and basilicas are filled with relics dating back to early Christianity.

Those attending Mass in St. Mary Major Basilica on Christmas Eve will kneel and pray before four historic wooden boards.

The boards darkened by age, are purported to comprise part of the crib in which the Christ Child was placed. They are said to have been brought to Rome from Bethlehem by Pope Sixtus IV in 1486.

Other pieces of wood are housed near the majestic Basilica of St. John in Christianity. The wood covers 26 stone steps, and tradition claims they are the steps Christ mounted to appear before Pontius Pilate.

After attending midnight Mass at St. John's the devout climb the "holy stairs" on their knees in a demonstration of humility.

Other faithful will kneel and pray before a priceless life-size statue of the Christ Child at the Church of the "Ara Coeli," one of the oldest churches in Rome.

The statue, which dates back centuries, was carved from an olive tree taken from Gethsemane, at the foot of the

Christmas In Other Lands

semene, at the foot of the Mount of Olives where Christ suffered his agony.

Those worshipping in St. Peter's, the largest basilica in the world, share the belief that Saint Peter, the Apostle

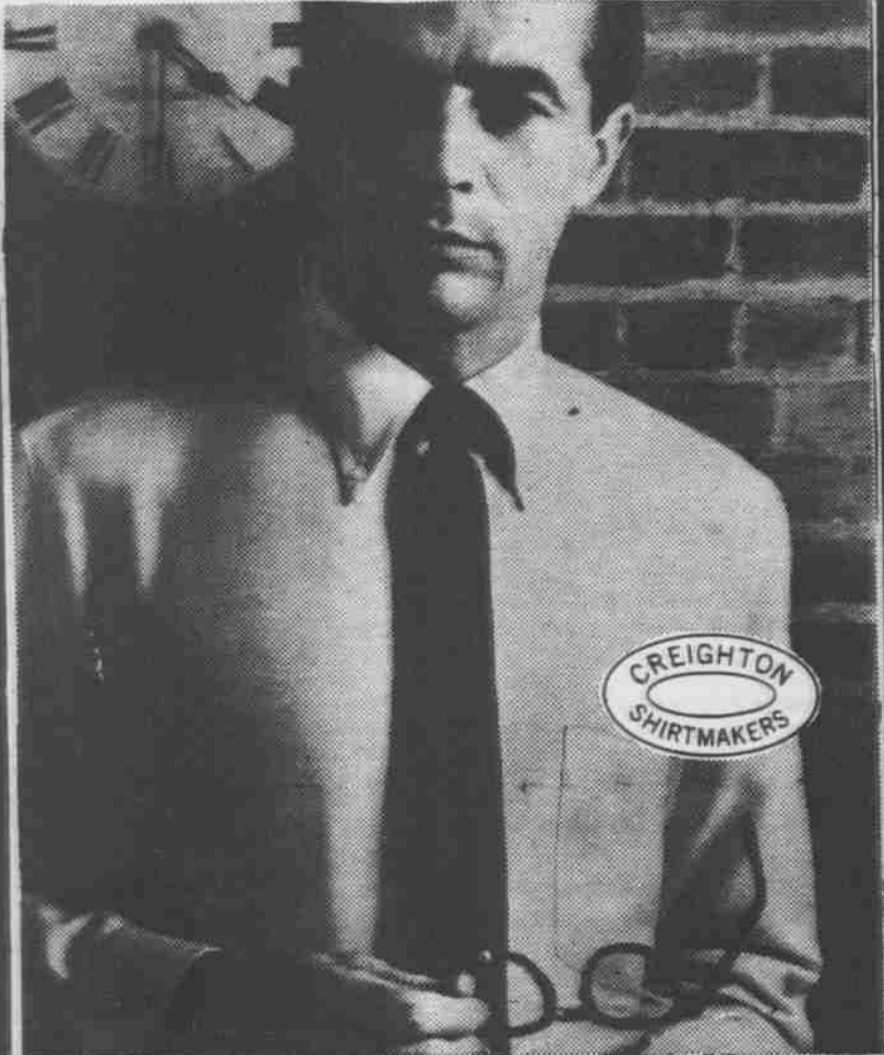
to whom Christ "gave" the Keys of the Church, is buried directly under the basilica. Bones believed to be Peter's have been found there.

The papal descendant of Peter, Pope Paul VI, receives members of the College of Cardinals and of the diplomatic corps accredited to the Holy See in colorful ceremonies during the Christmas season.

But it is to the Church's half a billion faithful that the Pontiff pays special attention at Christmas. Vatican Radio carries his annual message to all corners of the earth on the Christ's birth.

Creighton Shirts

are more traditional at The University of North Carolina



Creighton turns to thoughts of Brawny Oxford... a manly oxford. Highlighted by the seemingly careless yet carefully rolled button down collar... the natural expression of Creighton's traditional styling.

in Chapel Hill at

The Hub It's a Creighton when this label's on the tail.

Steve Tanger Campus Coordinator 116 Avery

DAILY CROSSWORD

ACROSS
1. Genuine
5. Demonstrative pronoun
9. Swiss capital: var.
10. Put through a certain kitchen utensil
12. Elliptical
13. Place of worship
14. Man's nickname
15. Legal order
17. Hebrew letter
18. Land measure
19. Liang
20. Distress call
21. Amend
23. Decays
24. Town in Massachusetts
26. Warble
28. Talked noisily
31. Half ems
32. King Olav's home
33. Pronoun
34. Whether
35. Excuse
36. First-rate
37. Famed
39. Entitled
41. Appearing as if eaten
42. Weeps
43. Early invader of Spain

44. Facial features
DOWN
1. Famous rider
2. Epochs
3. Worker of a sort
4. To the sheltered side
5. Forest way
6. Handle of a sword
7. Behave
8. — Dome scandal
9. Clayey
11. Garment
16. Anguish
19. Chinese secret society
20. Classify
22. Cooling devices
23. City in Nevada
25. Window-top drapery
26. Fish net
27. Notify
29. Masters of ceremony
30. Fests
32. Of greater age
35. Mexican dollar
36. Persian prince
38. Also
40. Constellation

Yesterday's Answer
BIAS NAIM
LONG ANVI
ONSH BEAS
ONE PWD A
KETTLES PER
SPILL APAN
SPILL EVERS
HOOT ORE
ONY SCARLET
UT ORK SVE
TUNES BAVEN
SORES OVERT
NARY BELLY

1	2	3	4	5	6	7	8
9				10			11
12				15			
14			15	16			17
18			19				20
21	22			23			
24	25			26			
27	28			29	30		
31			32				35
34			35				36
37	38			39	40		
41				42			
43				44			



JOIN THE RAFFIA.



THEY'RE WANTED MEN

Soft-spoken. Well-mannered. But extremely dangerous. Usually seen in the company of beautiful women. Prefer conservative dress, fine imported colognes for men. Specifically, Raffia, from which they take their name.



Raffia Cologne and After-Shave, Lime or Bay Rum.

Finer Diamonds come from WELDON'S JEWELERS



Ask About Our Special Student Terms

WELDON'S JEWELERS
327 W. Main Durham
Students' Jewelers—27 Years

Give the gift that goes on giving — a good book. From the Intimate!

Gift-Wrapping's Free, as always!

The Intimate Bookshop

Chapel Hill open every night until 10