



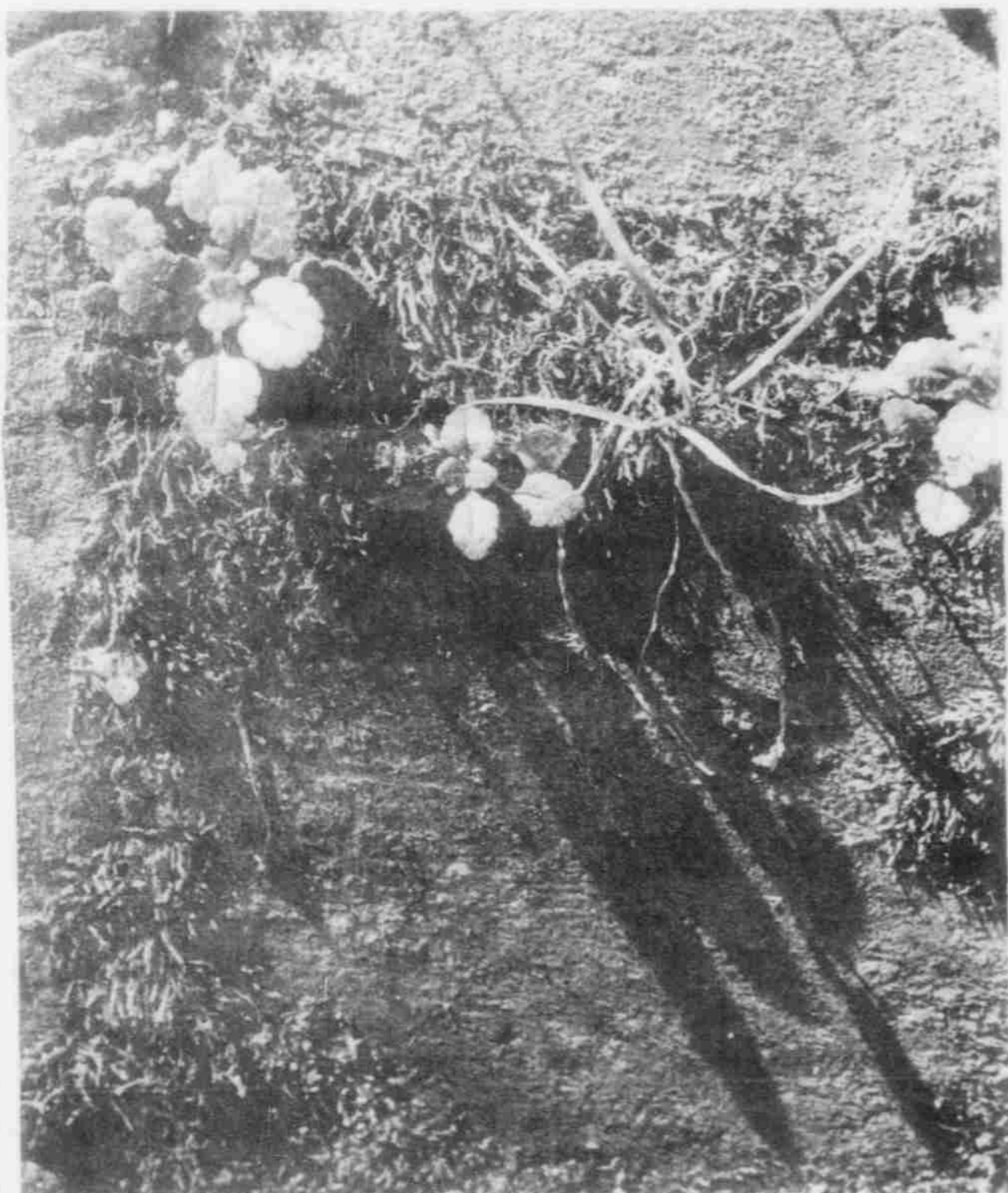
This creature, tinier than an ant, crawls out of the moss (no, not grass) onto an exposed tree root.

Close Up

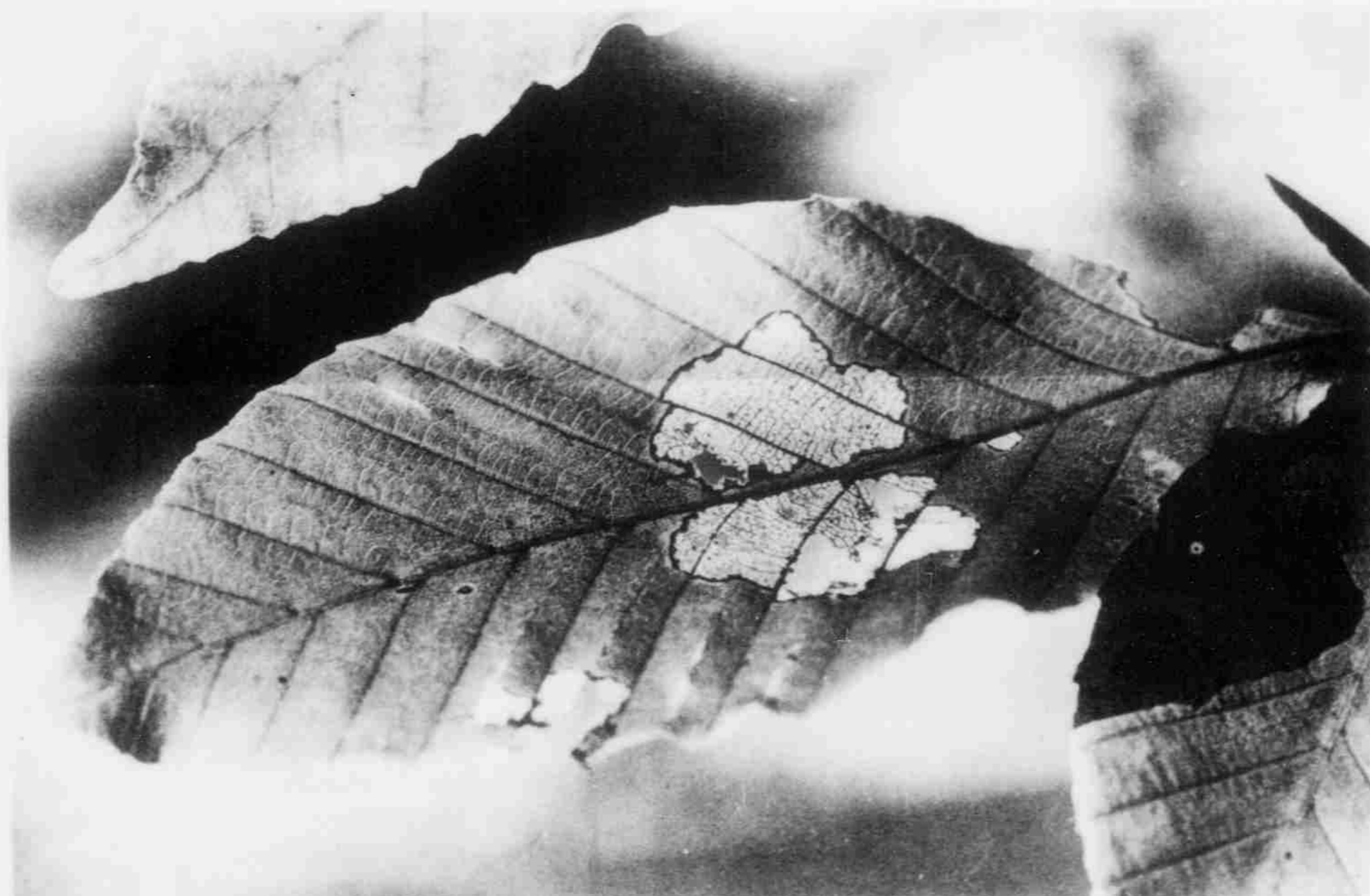


The tiny world has not been unaffected by man's presence, evidenced by this fusion of leaf and beer can top.

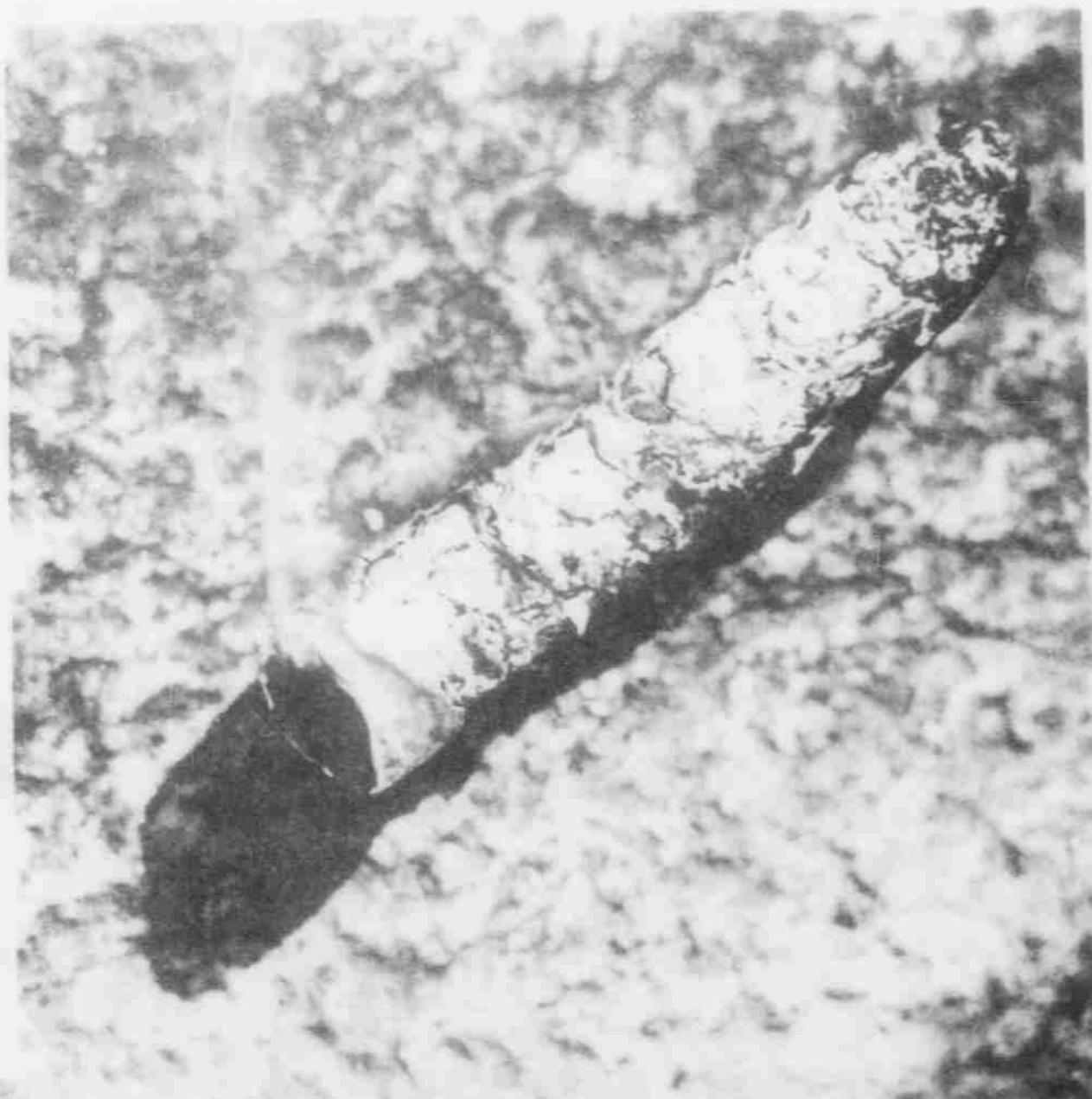
The Daily Tar Heel Insight



Even tiny plants cast long shadows as one can see from this photo of clover leaves and moss growing above a brick on the sidewalk near Old East.



One can't see the small animals at work, but they leave their mark, as on this dying leaf.

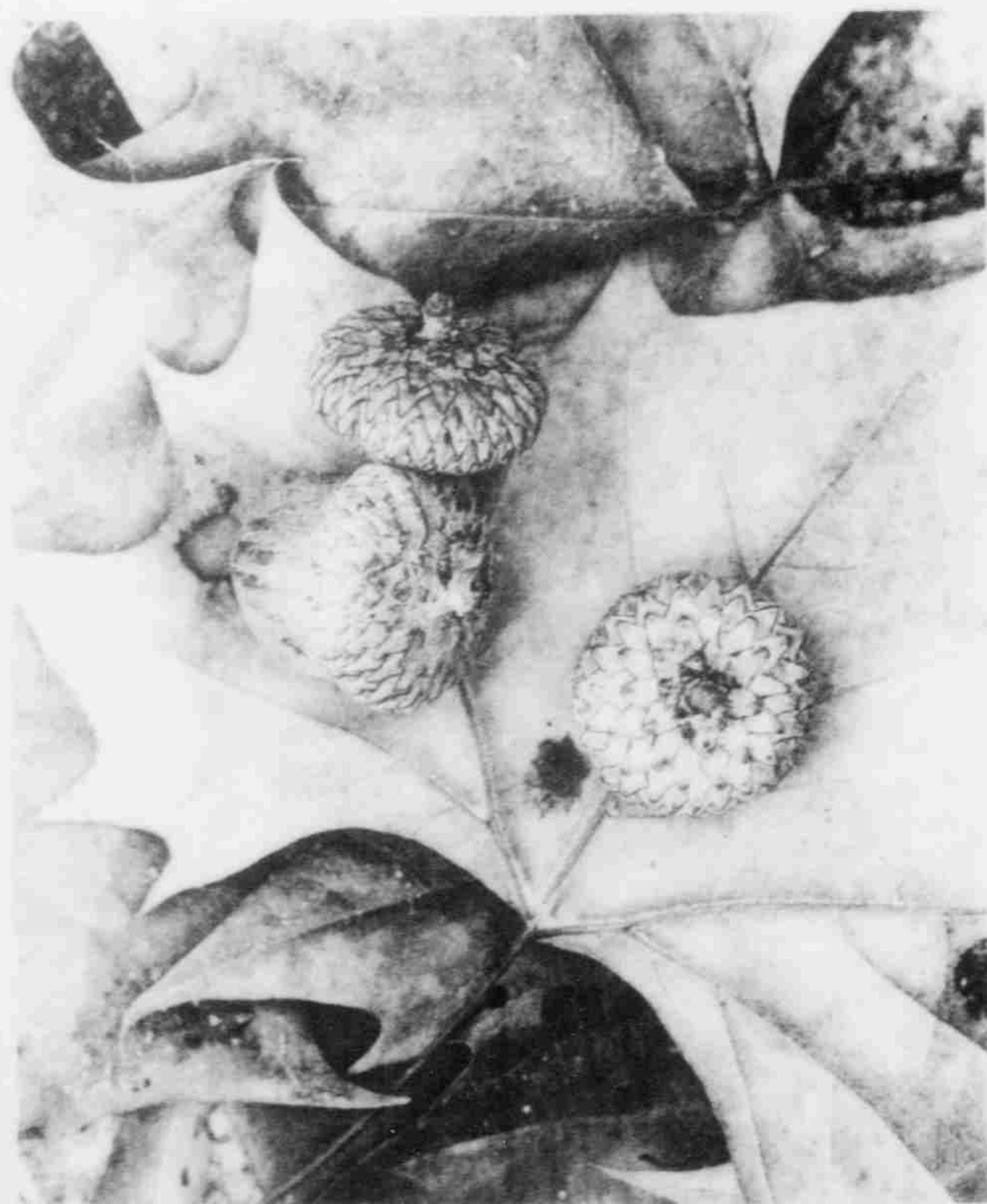


Students have left an imprint of some magnitude on the tiny world. This cigarette butt on the steps on Howell Hall is a testament to that fact.

DTH staff photographer Cliff Kolovson has been toying with close-up shots lately. He's been primarily concerned with the little things in nature, and he's found, when you get down close to the ground, it's a whole new world. These pictures represent some of what he has captured.



The photographer's name is permanently chiseled on a stone wall, right? No, just the imprint of a typewriter on a normal sheet of typing paper.



It seems like Lewis Carroll's Alice in Wonderland, but, in reality, it's three acorns lying on a leaf.